



The daily cardinal. Vol. XXXIII, No. 23 October 14, 1922

Madison, Wisconsin: University of Wisconsin, October 14, 1922

<https://digital.library.wisc.edu/1711.dl/YSX6ORO7MD6K38E>

<http://rightsstatements.org/vocab/InC/1.0/>

The libraries provide public access to a wide range of material, including online exhibits, digitized collections, archival finding aids, our catalog, online articles, and a growing range of materials in many media.

When possible, we provide rights information in catalog records, finding aids, and other metadata that accompanies collections or items. However, it is always the user's obligation to evaluate copyright and rights issues in light of their own use.

The Daily Cardinal

VOL. XXXIII. NO. 23

UNIVERSITY OF WISCONSIN, MADISON, SATURDAY, OCT. 14, 1922

PRICE 5 CENTS

GUN WILL OPEN CLASS BATTLE AT ONE TODAY

Rush Will Be Called Off if Lower Campus is Flooded

Promptly at 1 o'clock this afternoon a pistol shot will start the men of the sophomore and freshman classes off toward the line of bags which will be standing in the middle of the lower campus.

Everything is in readiness for the annual event so far as the Athletic board is concerned. All that remains is for the sophomores and freshmen to settle the question of supremacy.

The Athletic board announced yesterday that if the campus is plowed up or flooded the rush will be called off. Several years ago the field was plowed up and the inconvenience such action caused the physical education department led the board to take drastic action.

Police Instructed
The 15 captains of police squads met with chief-of-police Leslie R. Gage '23 yesterday to receive instructions as to the conduct of the rush and protection of freshmen

CLASS RUSH WINNERS

- 1901 Won by freshmen.
- 1902 Won by freshmen.
- 1903 Won by sophomores.
- 1904 Won by freshmen.
- 1905 Ended in draw.
- 1906 Won by freshmen.
- 1907 Won by freshmen.
- 1908 Won by freshmen.
- 1909 Won by sophomores.
- 1910 Won by freshmen.
- 1911 Won by sophomores.
- 1912 Won by freshmen.
- 1913 Won by freshmen.
- 1914 Won by freshmen.
- 1915 Won by sophomores.
- 1916 Won by sophomores.
- 1917 Won by freshmen.
- 1918 Won by freshmen.
- 1919 Won by sophomores.
- 1920 Won by freshmen.
- 1921 Won by sophomores.

against deportation or hazing. Each squad of policemen will be assigned to one bag and will see that fair play is maintained.

"The rush is not a contest of wits between two groups of men but a contest to decide class supremacy. Any unfair tactics will not be tolerated and any attempt to beat the gun will result in a forfeit," Gage declared.

Gun Announces Victors
The rush will last for 15 minutes. At the end of that time a pistol shot will signal the men to stop. The police captain in charge will note the position of each bag and report immediately to Gage. The winner will be announced by firing a pistol again, twice if the sophomores win and once if the freshmen are victorious.

Sophomores will meet at 12:15 o'clock on the south side of the library. Freshmen will go to the

(Continued on page 7)

HOLD MAG MIXER WEEK FROM TODAY

The annual Country Magazine mixer will be held in Lathrop hall next Saturday, according to an announcement made by John Reid '24, general chairman of the event.

Proceeds of the mixer are used to further the activities of the Country Magazine. The event is considered an all Agricultural college affair. Formerly, the mixer was held at the beginning of the university year, but the frolic was postponed this year on account of the Agric-Home-Ec freshman welcome.

Elaborate preparations are being made for the occasion, according to Ray E. Orr '23, chairman of the publicity committee. Music will be furnished by Thompson's six-piece orchestra. Refreshments, special stunts, and colored light effects will add to the entertainment. Tickets will be placed on sale on the campus at the beginning of next week.

Total Enrollment is Five Below Last Year

The total enrollment of the university is five less than last year, according to the latest figures from the registrar's office.

An increase of 395 is shown in the College of Letters and Science; 18 in Home Economics; 11 in the School of Music; the Medical school with 162 has not varied. The College of Engineering has a decrease of 178; the Course in Commerce a decrease of 235 and there is a drop of 44 in the College of Agriculture. The total enrollment is 7413.

The College of Letters and Science leads with 3,932; the College of Engineering, 1,118; the Course in Commerce, 971; the College of Agriculture, 520; the Course in Home Economics, 281; the Law school, 185; Music school 125; the Medical school, 162; the Course in Pharmacy, 87; the Library School, 32.

PLAN DRIVE ON '26 FOR UNION

Life Membership to Union Memorial Will Be Offered To Freshmen

About 3,000 freshmen and new students will be given the opportunity to be life members of the Wisconsin Memorial Union during the Life Membership week to be opened on October 30.

A group of workers is now employed at the registrar's office in order to get these lists in shape for the use of the canvassers.

Complete Drive in One Week

"We expect to clean everything up in exactly one week this fall. The proposition is sold to the whole student body already, and we can get the same fire of enthusiasm into the new students in a short time with our group of workers trained by last year's experience," said Morton Frost '22, general chairman of the campaign.

The Memorial Union building is to be placed between the Y. M. C. A. building and Park street on the lake front. The rotunda will be built as a tribute to Wisconsin's gold star men.

Alumni Work Continues

The halls and commons are to be parlors for social and recreational purposes, and the offices of various campus boards and publications will be located on the second floor.

"We will hold the same kind of drive for the new students and freshmen every fall," said Loyal S. Baker, secretary of the Memorial Union, "for every true son of Wisconsin will be proud to be recognized as a life member of the Wisconsin Union."

Million Nearly Raised

Prof. E. A. Gardner of the commerce school returns this morning from northern Wisconsin where he is organizing this work among the alumni. Neenah, Wis., Green Bay, and Manitowoc have been the centers of his work this week.

The desired million is almost raised, and it has been secured entirely by personal subscriptions among the students, alumni, and friends of Wisconsin.

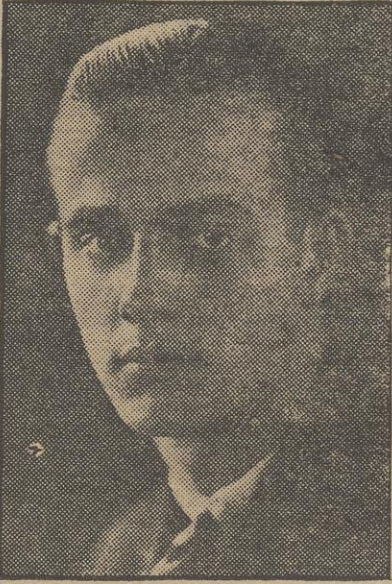
ZONA GALE WRITES ABOUT U. W. CAMPUS

"There is nowhere in America a lovelier campus than that which lifts from lake Mendota, —an institution which makes every Wisconsin tax-payer either a psalmist or a prophet of peril."

In these words the university is described in Zona Gale's article, "Wisconsin: A Voice from the Middle Border," which will appear in the October issue of The Nation.

Miss Gale gives a very human and sympathetic treatment of the progress and achievements of her home state mentioning especially the work of La Follette and McCarthy. She takes as the spirit typifying Wisconsin, McCarthy's words, "Something where there was nothing."

"GENE" TUHTAR IS SOPH CANDIDATE



EUGENE TUHTAR
—Badger Studio Photo

"Gene" Tuhtar of Milwaukee is the first member of the class of 1925 to announce his candidacy for the presidency.

Dorothy Johns is candidate for vice-president; Dorothy Marshall for secretary; Henry Smith for treasurer and Milton Stangel for sergeant-at-arms on the ticket.

Tuhtar is holder of the State Interscholastic high jump record and won his numerals last year as captain of the frosh indoor and outdoor track teams. He was on the '22 Venetian Night committee, Union Memorial drive and on this year's Homecoming committee. Tuhtar is a member of Sigma Nu and Skull and Crescent. He is enrolled in the College of Commerce.

Miss Johns Active

Miss Johns was vice-president of the freshman Y. W. C. A. commission, captain of the Y. W. C. A. finance drive committee, and was on the Badger subscription committee and on the '25 Greenbutton publicity committee. She won her numerals last year as captain of the indoor and as a member of the outdoor baseball teams. She also won numerals on the freshman hockey team. She is from Milwaukee and a member of Pi Beta Phi.

Miss Marshall is on the 1924 Badger subscription committee and Cardinal advertising. She worked on Jack Child's China Welfare drive last year. Her home is Beloit.

Smith is president of the Sophomore commission, sophomore representative of the Y. M. C. A. cabinet, treasurer of the Rocky Mountain club, and sophomore assistant on the 1924 Badger. Last year he was vice-president of the freshman Inner-Circle. He is a pledge of Theta Xi fraternity and comes from Miles City, Mont.

Football Man

Stangel won his numerals on the frosh football team. He was on the freshman crew, captain of the second crew, and a member of the indoor track team. He is now on the All-American football squad. Stangel is on the 1924 Badger subscription team and member of Philomathia society. In his freshman year Stangel won the frosh Philomathia declamatory contest. He is from Manitowoc.

Judge Rosa to Address

Women Voters of County

Judge Charles D. Rosa, graduate of the Law school and member of the state tax commission, will give a public lecture on "Taxation" at 8 o'clock Monday evening in the auditorium of the city Y. W. C. A., under auspices of the Dane County League of Women Voters. Judge Rosa has been a practicing attorney in Dane county for 20 years. He will illustrate his lecture with charts. A public forum will be held following the address.

WEATHER: UNSETTLED

Somewhat unsettled but generally fair weather is forecasted for Saturday. The temperature is expected to drop slightly. Fair weather is expected for Sunday.

BADGERS READY FOR HARD BATTLE WITH DAKOTANS IN SECOND PRELIMINARY GAME

Homecoming Carnival Will Replace Vodvil

The Homecoming Carnival, which is to be staged under the direction of Ralph Scheinpflug on November 10, will give an opportunity to the vaudeville talent in the school to display its wares. Since Union Vodvil will not be held this year, the carnival will undoubtedly be presented by the best talent in school.

Any person or group of persons desiring to submit an act is requested to call Ralph Scheinpflug at Badger 196 before next Wednesday night. He will go over tentative plans and will arrange for a tryout at a future date.

A number of male actors have already signified their intentions of trying out for a place on the program. Chairman Scheinpflug is anxious to hear from any women who might have something to submit.

BADGER SALES TAKE A RISE

Men's Teams Will Canvass Crowd Between Halves at Game

"In spite of a rise in Badger sales only one-fifth of the necessary number have been sold, and only three more days at the original \$4 cash price are left," Howard Lyman '24, business manager, said last night.

The total at the end of the fourth day is only \$10, and 5000 is necessary to make the year book truly representative of Wisconsin.

"It is true that the student body has not been asked every few steps to subscribe, but this is because the new ruling regarding women soliciting on the hill has gone into effect, and not because every subscription is not just as vital, if not more so, than ever before."

"Four times as many subscriptions as have already been turned in will be necessary to put the Badger across this year as the biggest and best Badger ever. The editorial staff is full of good ideas, but they will have to have money to put them into effect."

Men's teams will canvass the crowd for more subscriptions between halves at this afternoon's game. They are anxious that everyone who has not already signed up for the Badger will bring money to the game and sign up then.

Teams of men and women are canvassing all fraternity, sorority, and rooming houses. Booths are kept in the corridors of the main buildings where students who have not been canvassed at their houses may subscribe. If there are any students who have not signed up either at their houses or at the booths they may do so by coming to the office in the Union building, according to Lyman.

The regular campaign will continue until Monday night. Tuesday the cash price will go up from \$4 to \$4.50 and the time price will go up from \$4.50 to \$5. Federal board students may obtain the book at the original prices until October 21.

F. J. Kojis leads the men's individual numbers with 200, and Edward Telford is second with 75.

Elizabeth Stolte '25, has the highest women's individual score of 55, and Dorothy Bach is second with 45.

Among the women's teams, that of Kathryn Davis is first with 186 and Mabel Crumney's is next with 171.

Light Drizzle Results in Slippery Field For Contest

PROBABLE LINEUPS

Wisconsin	South Dakota
Tebell	R. E. Sundet
Murry	R. T. Smith
Hohlfeld	R. G. Backman
Nichols	C. Coffey
Bieberstein	L. G. Fenn
Christianson	
Schernecker	L. T. Murray
Irish	L. E. Meers
Barr	Q. B. Welch
Gibson	R. H. Roberts
Eagleburger	L. H. Owens
Taft	F. B. Schutte

Officials—Haines, Yale, referee; Knight, Dartmouth, umpire; Wyatt, field judge. Time—2 o'clock. Place—Camp Randall.

BY CHAS. J. LEWIN

Out of the West come twenty-five huskies, reputedly heavy and fast, who are groomed to give Coach John R. Richards and his Badger football squad one solid hour of worry at Camp Randall this afternoon.

South Dakota State college and the Wisconsin grid eleven will lock horns in the second preliminary game of the season at 2 o'clock.

Confident that his team can surpass its 1921 record when it held Wisconsin to a 24 to 3 score, Coach C. A. West and his prairie battlers are determined to make a fight of it all the way. They have "everything to gain and nothing to lose," and the westerners will throw every bit of reserve power into their attack in an effort to sweep the Badgers off their feet.

South Dakota Strong

It will be a different Wisconsin squad that will prance on to Camp Randall this afternoon, different not only in personnel but in spirit. "The men have found themselves," said Coach Richards yesterday. "They will be in there to fight, and although it is not the regular eleven, it is good enough to play real football against South Dakota."

South Dakota's aggregation will be intact with the exception of the left end. Thompson, who was withheld from the St. Thomas game last week so that he would be in shape for Wisconsin, did not accompany the squad to Madison. Meers, a reserve, is slated to hold down the wing position against the inimitable "Gus" Tebell.

Expect Owens to Star

Otherwise, the Dakotans are primed for the battle and "rarin' to go." Arriving in Madison early yesterday morning, they looked over the battle scene and worked out on the gridiron for 30 minutes early in the afternoon.

The huskies ran through a light signal drill, kicking and passing

(Continued on page 3)

HOLD TRYOUTS FOR CASTALIA, PYTHIA

Tryouts for the two women's literary societies, Castalia and Pythia, will be held next Friday night in Lathrop hall.

Definite announcements of the time and place each society will hold its tryouts will be announced in the Cardinal later. Second semester freshmen and upperclassmen only are eligible to try out. All members will be graded on a basis of literary, artistic, or musical ability.

Selections for tryouts may take any of these three forms, and should be confined to about three minutes.

Catharine Boyd '23, Castalia, and Marjorie Capron '23, Pythia, are the respective presidents of the societies.

LAB TESTS TO SAVE MILLIONS

Exact qualities of Wood Are
Determined By Experts
For Merchants

More than \$40,000,000 can be saved annually to structural engineers and other wood users through tests made recently at the Forest Products laboratory.

The tests determine almost the exact strength, resistance to stresses, impact force and some 20 other properties which engineers need to know about the materials with which they work.

The five hundred thousandth piece of timber in this series, which was begun 12 years ago, was tested a short time ago at the laboratory. It was from a white ash cut in Bennington county, Vt., by a government forester.

Exactness Economical

Wood which stands much more stress than necessary will no longer be used on structures. Exactness in fitting timbers will save great quantities of wood, which is growing scarcer each year, officials say.

Most of the tests are simple, laboratory experts say. In the impact test a hammer is suspended above the wood. This is released at various heights until the wood splinters like a match. The test specimen from every species is 2 inches square, and varies in length. For the impact test it is 30 inches long. The United States, through the work of the laboratory, is the only country in the world which so accurately knows the strength properties of its various woods.

Test 150 Woods

Among the 20 properties of wood which the tests reveal are hardness, toughness, elasticity and shrinkage qualities. Data has been prepared on these qualities for over 150 native woods.

Detailed information is kept concerning each tested piece. Even the age and location of the tree and the conditions under which it grew are known.

The tests were especially valuable

Luther Cabinet to Be Installed on Sunday

The 1922-23 student cabinet of Luther Memorial church will be officially installed at 10:45 o'clock Sunday morning during the second service.

The cabinet which is the governing body of the Luther Memorial student association, has charge of all student activities within the church.

Officers of the cabinet are Wilber Wittenberg '24, president; Bernice Elver '23, vice-president; Otto Herberner '23, Treasurer and Vera Carlyle '23, secretary.

Madison Committee to Hold Music Contest

A movement to increase the knowledge of good music by hearing 24 of the best musical compositions played by experts is being conducted by the Madison music committee. A contest will be held at the end of six weeks of instruction.

The first selection will be "To a Wild Rose" and "To a Water Lilly", from "Woodland Sketches" by Edward McDowell.

during the world war. They became the background for the designers of airplane parts, where strength and lightness are equally important. The results were also used by erection engineers, shipbuilders and in other industries using wood.

QUESTION BOX AIDS GRADS' HOUSE PLAN

A question box for graduate woman students has been placed on the central table in Lathrop hall to receive all queries concerning the new graduate house at 420 North Carroll street. All such queries will be answered by mail.

"The house has been established as a center for graduate women students, and it is up to them to get the full enjoyment from it," Miss Ida Gilbert '22, who is in charge of graduate publicity, said yesterday.

Birthday parties, dancing and varied activities will be sponsored by the graduate house as it comes to be better known on the campus, according to Miss Gilbert.

D. G. EMRICH
CLEANING AND PRESSING
Hand Finishing
All Work Guaranteed
712½ University Ave.

**NOVELTY FIVE
ORCHESTRA**
536 State St. B. 2146
"MUSIC WITH A SWING"

Forestry in Australia Discussed By Expert

Harry D. Tiemann, a member of the United States Forest service, and formerly in the personell of the Forest Products laboratories, lectured at Music hall Thursday night discussing the forestry conditions in Australia.

The people there do not seem to realize the great advantages which they have in their forests, according

to Tiemann, and there seems to be very little sentiment against fire, which has been the bane of the Australian forests.

CALL WISCONSIN
TYPEWRITER EXCHANGE
519 State Street

Badger 1970 for that typewriter
All makes rented. Only high grade
machines sent out.
Agents for Remington Portable

Motor BUS Service MADISON—MILWAUKEE



West Bound—read down

8:00 A.M. 4:00 P.M.
8:50 A.M. 4:50 P.M.
9:08 A.M. 5:08 P.M.
9:20 A.M. 5:20 P.M.
9:28 A.M. 5:28 P.M.
9:35 A.M. 5:35 P.M.
9:45 A.M. 5:45 P.M.
10:15 A.M. 6:15 P.M.
10:25 A.M. 6:25 P.M.
11:00 A.M. 7:00 P.M.
11:30 A.M. 7:30 P.M.
12:35 P.M. 8:35 P.M.

Daily Time Table

Lv. Milwaukee Ar.
Lv. Waukesha Ar.
Lv. Pewaukee Ar.
Lv. Hartland Ar.
Lv. Nashotah Ar.
Lv. Okauchee Ar.
Lv. Oconomowoc Ar.
Lv. Sullivan Ar.
Lv. Rome Ar.
Lv. Ft. Atkinson Ar.
Lv. Cambridge Ar.
Ar. Madison Lv.

East Bound—read up

12:35 P.M. 8:35 P.M.
11:45 A.M. 7:45 P.M.
11:27 A.M. 7:27 P.M.
11:15 A.M. 7:15 P.M.
11:07 A.M. 7:07 P.M.
11:00 A.M. 7:00 P.M.
10:50 A.M. 6:50 P.M.
10:20 A.M. 6:20 P.M.
10:10 A.M. 6:10 P.M.
9:35 A.M. 5:35 P.M.
9:05 A.M. 5:05 P.M.
8:00 A.M. 4:00 P.M.

Milwaukee—2nd and Grand Ave. Plankinton Arcade.
Madison—Park Hotel

For further information, see Bus Drivers or call

Wisconsin Motor Bus Lines
Grand 5100 Milwaukee Traffic Dept.

ARE YOU THE STUDENT WE ARE LOOKING FOR?

To handle our seal and crest stationery; dance programs; banners, pennants, pillows; Xmas cards. 200 Student Representatives.

**YOUNG COLLEGE & FRATERNITY
SUPPLIES**
REPUBLIC BUILDING, CHICAGO

Cardinal Barber Shop

CLAUD DYER, Prop.
407 North Frances St.

WHY PAY MORE WHEN PURITAN RECORDS ARE ONLY

50c?

Supreme in tone, melody, rythm, and volume. Guaran-
teed to give satisfaction

OUT FIRST WITH THE LATEST

STUDENTS' MUSIC SHOP
With GEO. WUILLEUMIER, Jeweler
808 University Ave.

If You Are Interested—

in quality tailored clothing at a price
that you think fair you will appre-
ciate the splendid qualities of our
customized clothes.

We do not claim any monopoly on
fine woollens or trimmings, but we do
claim that our hand-tailoring insures
clothing which cannot be surpassed
for quality, style and comfort. We
specialize in good clothing.

John Grinde
18 N. Carroll St.

BOYD'S

**Student
Dance**

Featuring

**JESSIE COHEN'S ORIGINAL
CANDY SHOP ORCHESTRA**

Tonight

John L. Boyd

ORCHESTRAS

MAKE SOMEBODY HAPPY ON

CANDY DAY

Saturday, October 14th
Remember, everybody likes candy

A box of our New Fashioned makes a fine
remembrance gift

Better still

A box of our assorted creams

MRS. JOACHIM'S, 507 State

Candy Specials every Saturday afternoon



\$9.00

COLONIALS

The Season's Style
Hit

Each season some
style gains leader-
ship and Gleues' al-
ways provide you
with the leader. The
pictured Colonial is
but one of several
Colonial patterns
shown this fall.

GLEUES'

Exclusive Footwear

GLEUES'

The Place to Buy Shoes

Gay Bldg. Madison, Wis.

NEWS OF CONFERENCE SPORTS

YALE-IOWA TILT FEATURES GRID BATTLES TODAY

**Only Two Big Ten Games
Are Scheduled; Others
Have Preliminaries**

In every section of the country, today is a big day for football. Not only does every team in the Big Ten conference swing into play, but the good teams all over the country will see action.

Of all intersectional games, the Yale-Iowa contest is probably the most representative. Yale always has a team which is a leader in the East. Present indications point that Iowa has this year a powerful team which will rank with the best in the Conference.

The two teams are coached by brothers, Tad and Howard Jones. This feature of the contest is a point of much interest because of the rivalry for superior teams between the brothers.

Two Big Ten Teams

Two Big Ten games will be played today when Indiana meets Minnesota and Chicago engages with Northwestern. Other Big Ten teams will play preliminary games in preparation for the championship race which will start for every team next Saturday.

The Hoosiers got away to a bad start and were only able to play Depauw to a tie last Saturday. Unless they have improved considerably, Minnesota should have little trouble in disposing of them.

Chicago showed a mountain of strength in defeating Georgia by three touchdowns a week ago. Northwestern will probably resort to passing and open field formations in an attempt to win from the Maroons.

Illinois Meets Butler

An interesting contest will take place when Purdue lines up against Notre Dame. While most of the experienced players on the Catholics' undefeated team of last year are lost to the team through graduation, Coach Rockne has a fast fighting team which will try to duplicate last year's performance.

In its first game of the season, Illinois will meet Butler today. While the Illinois men are fast improving, they are no where near their best form yet, and the game may be an easy one.

Ohio State will play Oberlin today. It will be remembered that all the dope was spilled when the highly touted Ohio team went down to defeat at the hands of this same Oberlin team last year. It is hardly expected that the feat will be accomplished again this year.

Fresh Gridiron Aspirants Get Gruelling Practice

Three Freshman football squads, composed mostly of high school stars, are learning by gruelling practices the difference between the high school and intercollegiate game.

The practice last night consisted of the rehearsal of the regular plays and ended with fifteen minutes snappy scrimmage.

The first string men generated by the experienced Sioux City quarterback, Ed Williams had little difficulty in finding the weak spots in the second string line.

Reuland, Nelson, McCormick, Williams, and Scalan are men of promising ability. Ham, on the second squad manifested his defensive ability by repeatedly breaking up the plays.

Hard Times Don't Effect Ag School Enrollment

The effect of "hard times on the farm" has not noticeably decreased the enrollment in the College of Agriculture according to the officials of the school.

The course in home economics shows the greatest increase, while the two-year course in agriculture and the four-year course is practically the same as last year.

The registration now includes 343 students in the four-year course, 55 in the two-year course, 18 special 118 or more graduate students and 234 in the Home Economics department. The total is 813, approximately that of last year.

COFFEY TO PLAY CENTER TODAY



F. Coffey, a veteran on the South Dakota football team, is expected to give the Badgers strong opposition in his position as center. His playing this year has been very good.

30 COMPETE IN CROSS COUNTRY TRYOUTS TODAY

**Race Will Cover Three and
One-half Miles; Competition
is Keen**

Thirty Varsity squad harriers will compete in the second cross country time trial of the season to start at 11:15 this morning in front of the gymnasium.

The race will cover three and a half miles, which is the same distance as will be run in the dual meet at Madison next Saturday against Michigan, and is half a mile farther than last Saturday's time trial contest.

Fierce competition for places is to be expected today because the first ten men to cross the tape are very likely to be chosen for the team that will represent the Badgers against the Wolverines on October 21. Coach Mead Burke has at least 15 runners of almost equal ability, and it is impossible to predict who will be included in the lucky ten.

Some of the men, eligible for conference competition, was performed well last Saturday are: Eschudy, Vallely, Perry, Moorhead, Ramsay, Wade, Link, Rossmel, Cohen, Piper, and Chase. A few other men, headed by Schneider who dropped out of the race last week, have chances of displacing some of the former winners.

The Michigan meet at Madison on October 21, the day of the Indiana game, will probably be held in the morning to allow sport fans to see both the hill and daie race and the game.

In several respects the meet with the Wolverines will differ from the usual dual conference contest. Each team will run ten men instead of six; while the distance will be cut from five miles to three and one-half. Only five men on each team, however, will qualify for places, just as in the regulation dual match.

MASONS TO ENJOY BIG FALL FROLIC

The annual Masonic fall frolic will be held at Lathrop hall tonight. Gaily colored favors and special lighting will be the feature of the evening.

University Masons, Eastern Stars and wives, daughters and sisters of Masons are included in those invited to share in the fun which the local Square and Compass and Eastern Star members have provided.

Refreshments will be served and there will be a short musical program of entertainment. George Walsted '25 and Henry Sanborn '24 will present a few of the latest song hits in a short skit.

Any Mason desiring to become a member of the Square and Compass may do so at the party tonight. Members of the local square will be in charge of a table where application may be made. Any university Mason, student, faculty member, or employee is eligible to membership in the organization.

Everybody's Pickin' Winners; Here's the Real Expert Dope!

BY CHUCK

Every body's doin' it. From the guy who thinks "Shorty" Barr is a saloon fixture to the gent who strengthens his moonshine with red pepper, they're all picking winners in the Saturday football games.

Anybody who can tell the difference between a football and a Chinese kite and who doesn't think "Rollie" Williams manufactures shaving cream is eligible to choose.

One bimbo is boasting that he selected New York to win the World Series. The poor boob oughta get a fur-lined crepe de chine watchfob for that one. He thinks a king's palace is lined with court plaster. He's the bozo who composed that new ditty, "Mush is like a convict 'cause it's always breaking out."

They's no use letting Hooie Fullerton and Roundy get away with all the bars of palmolive soap for picking winners. Try these on your electric toaster.

Yale will not play Princeton today. Berlin is a town in Wisconsin.

Indiana will beat Minnesota. Coach Tad Jones, Yale, and Brother Howard Jones, Iowa, will get acquainted at New Haven today. Coach Jones' team should win.

Yale will not play Princeton today. Chicago and Northwestern meet at Stagg field.

French batteries are not made in Paris.

Yale will not play Princeton today.

These may go wrong, but they won't be alone. And while we're talking about Santa Claus, they're going to be a football game in our own backyard today.

Old Man Barr, who came to Wisconsin when Indians still camped near sorority alley, will lead ten or eleven men, we forget the exact number, against South Dakota. Only twenty-five veterans are back with the Dakota eleven, so Coach West has had a tough proposition developing new staff photographer.

The game won't be anything like a 2:30 pace. They ain't goin' to mark a trail from one goal post to the other and the guy what plants pigskin behind last white line or two will rate a D. W., which in vulgar parlance, means Date with (write in name of favorite girl).

The battle of Waterloo will be just a quiet of meeting of ladies sewing society comparing to today's mix-up.

Far as we're concerned, they ain't nobody but the peanut butchers goin' to win anything.

Write your own ticket!

INDIANA CAPTAIN WIELDS PICK TO GET INTO FORM

BLOOMINGTON, Ind., Oct. 13—Wielding a pick and shovel on a western section gang may not be considered an ideal college vacation but it was the means employed by Frank Hanny, football captain at Indiana University, to get into condition for the 1922 gridiron season.

Hard as nails, the good natured "Duke", as he is known among Indiana students, is hurling his 195 pounds through the air at the tackling dummies every afternoon on Jordan field in an effort to keep up his great record of 1920, when at the end position he permitted only four yards to be gained through him during the entire season.

Last year "Duke" suffered an injury to his shoulder in the Harvard game, which kept him laid up most of the season. He plays defensive end and offensive halfback and is counted on to do much of the punting this season.

Hanny's first Big Ten conference competition as captain of his team comes Oct. 14 at Indianapolis, when he will lead his eleven against Minnesota.

"Hobe" Bondi Signs to Coach at Whitewater

JANESVILLE, Wis.—Whitewater normal school Friday morning announced the signing of "Hobe" Bondi, recently declared ineligible for football at the University of Wisconsin by his voluntary confession of professionalism, as an assistant coach. He will pay particular attention to the backfield and begin work Monday.

BADGERS READY FOR HARD BATTLE WITH DAKOTANS IN SECOND PRELIMINARY GAME

MURRAY TO PLAY CENTER FOR S. D.



JOE MURRAY—LEFT TACKLE

Joe Murray, a South Dakota player, enters another football game with high hopes of giving the Badgers a hard fight. In his position as left tackle, he has shown exceptional ability so far this year.

GAMES TODAY

Brown at Syracuse
California at St. Mary's
Carleton at Gust. Adolphus
Chicago at Northwestern
Colorado at New Mexico
Columbia at Wesleyan
Cornell at New Hampshire
Dartmouth at Middlebury
De Kalb at Whitewater Normal
De Pauw at Lake Forest
Drake at Kansas
Georgia Tech at Alabama
Harvard at Bowdoin
Illinois at Butler
Indiana at Minnesota
Iowa State at Missouri
Lombard at Ripon
Marquette at Carroll
N. Carolina at S. Carolina
Ohio State at Oberlin
Oshkosh Normal at Superior
Oshkosh Normal at Superior Normal
Pittsburgh at West Virginia
Princeton at Colgate
Purdue at Notre Dame
South Dakota at North Dakota
Army at Alabama Poly
Navy at Buchnell
Michigan at Vanderbilt
W. & J. at Carnegie Tech
Yale at Iowa

PLAN TEAS FOR U. W. WOMEN AT NEW CLUBHOUSE

**Need Five More Women to
Room in the New
House**

A tea will be given for all graduate women at the club house of the new local branch of the American Association of University Women from four to six o'clock Sunday afternoon, at 420 N. Carroll street. Miss Harriet O'Shea is in charge of the arrangements for the tea.

The University women's club opened its house with a tea last Tuesday. Many teas and candy pulls have been planned for the cold Sunday afternoons and evenings of this winter.

Already there are three graduate students living in the house and there is room for five more.

Anyone wishing to secure information about living in the new house will please see Sara Hogg, at the S. G. A. rooms at Lathrop hall any day between 1 and 1:30.

Those at the head of the organization are: Miss Louise F. Nardin, president of the Madison branch of the A. A. U. W., Mrs. M. B. Roserberry, chairman of the house committee, and Mrs. T. E. Brittenehar, chairman of the finance committee.

Light Drizzle Results in Slippery Field For Contest

(Continued from page 1)

ractice. Owens, colored halfback, may be a dark cloud on Wisconsin's horizon. He played last year, and it was his excellent work in the second half that kept his team from a whitewash. He practiced receiving punts yesterday.

From tackle to tackle, the Dakotans outweigh the Wisconsin line thirty pounds to a man. The forward wall moves as a unit and charges fast. Although the backs are not heavy, they are speedy enough to overcome this handicap. Owens and Roberts are touted as a pair of great backs, and Schutte is said to be a powerful line-plunger.

Williams Still Out

Capt. Rollie Williams will not be in the line-up which takes the field for Wisconsin. Rather than risk him in a preliminary game, Coach Richards is using a reserve and saving Rollie for Conference battles. Barr, Gibson, Eagleburger, and Taft are slated to be in the backfield. Eagleburger is a game player, fighting all of the time, and speedy, thought diminutive.

Wisconsin engaged in a light skirmish to top off its practice work yesterday. After a signal drill, Varsity and the All-Americans went through eight or ten plays in regular scrimmage, and then worked in a dummy scrimmage. Richards appeared satisfied that his team was fit for its "acid test."

Weather Unsettled

With the weatherman predicting unsettled weather for today, the best conditions are not anticipated. A light drizzle which started at 10 o'clock last night indicated that the field would be slippery. The slight wind which was blowing yesterday was expected to die down, giving neither team an advantage in the side of the field it chooses. Punting with the wind, Dakota kickers were able to average 55 yards. Taft should be able to do better for Wisconsin.

Ticket sale will continue at the gymnasium until 11 o'clock. It opens at Camp Randall at 1 o'clock. Athletic authorities expect a much larger crowd than that which attended the Carleton game.

"Dust to Dust" Tale of Campus Leaves

"Dust to dust" is the tale of the autumn leaves on the campus.

The heaps that are being raked up will not be burned, not a single one. They will be gathered together, mixed with lime, and later will be placed back on the soil as fertilizer.

"In about a year's time the leaves will be sufficiently decomposed to be used as a fertilizer of the very best sort." Prof. F. A. Aust, associate professor of landscape design said yesterday.

"Burn them? No, indeed," he emphatically declared.

C. E. Johnson, D. D. S. DENTIST

642 State Street
Tel. Badger 977 Madison, Wis.

**BADGER
Rent a Car
DRIVE IT YOURSELF
Fairchild 2099
313 W. Johnson St.
Dodges—Fords—Chevrolets
—Studebakers
S. S. LEVITIN, Mgr.**

The Daily Cardinal

Owned and Controlled by the Student Body of the University of Wisconsin

Member The Western Conference Editorial Association
Member Wisconsin Intercollegiate Press Association

University daily, established 1892, and combined with The Wisconsin Daily News, established in 1912. Published every morning except Monday during the college year. Entered as second class matter at the Madison, Wis., post-office.

Subscription rates—\$3 a year, \$1.75 a semester in advance.

Editorial Offices—Union Building, Telephone Badger 250.
Capital Times Building, Telephone Badger 1137.
Business Offices—Union Building, Telephone Badger 6606.

BOARD OF CONTROL

President, Ralph E. Balliet; Vice-president, Margaret A. Callen; Secretary, Arthur Freytag; Treasurer, Robert L. Reynolds.

EDITORIAL STAFF

MANAGING EDITOR **GEORGE L. GEIGER**
Editors H. Hickman Powell, Charles J. Lewin
Woman's Editor Portia B. Lugoff
Conference Editor Walter J. Pfister
Night Editors H. Eugene Alleman, Porter F. Butts
Night Editors Walter A. Frautschi, Joseph F. Lawler, Harold R. Maier
Editorial Writers Maynard W. Brown, L. Francis Lamb
Skyrockets Editor Faxon Hall
Society Editor Gladys Petersen
Assistant Woman's Editor Kathryn Perry
Exchange Editor Bernice Bruns
Agricultural Reporter Thomas Daniels
Night Assistants Oliver Banton, Eliot Sharp
Special Writers—John Bergstresser, Mary James, Dorothy Reichert, Marion SeCheverell, Frances Warren.
Reporters—Helen Baldauf, Gertrude Bohrer, James Culbertson, Wes Dunlap, Rene Hemingway, Bert Hopkins, Robert Pfeifer, Edith Porter, Edward Schele, John Weimer.

BUSINESS STAFF

BUSINESS MANAGER **DOUGLAS K. NEWELL**
Advertising Manager Walter H. Plewke
Associate Advertising Manager Robert C. Salsbury
Collection Manager Orvin H. Anderson
Merchandise Service Manager Blanche Field Noer
Merchandise Service Assistant Lois Jacobs, Elizabeth Clark
Advertising Assistants—Ingolf Dyrud, Harold Laskey, Malcolm Millar, Marion Mohlenpach, Elizabeth Schott, Ellen Mohlenpach.
Business Assistant Harold Bennett

NIGHT EDITOR—JOSEPH F. LAWLER

ON WITH THE RUSH

AT the crack of a pistol two bodies of face besmeared men will rush madly from opposite directions towards 15 bags in the center of the lower campus. Today is the big day for the underclassmen. In the bag rush the freshmen and sophomores will meet in a time-honored struggle. It will be a glorious fight.

The freshmen and sophomores have behaved pretty well this fall. There have been but few hazing parties and none of the riotous nature of the old times. Both classes have probably stored up a lot of fighting spirit which will, break forth this afternoon.

Traditions may have changed somewhat in recent years, but human nature has not. The underclassmen of today are as full of life as the old timers. But instead of dissipating their energy over a long period of hazing, they have conserved it. The safety valve will be opened this afternoon. A mighty explosion is expected.

Those who claim that the discouraging of hazing will eventually kill class spirit will have their theory prove or refute at 1 o'clock today. If the rush is a hot and fiercely contested battle, class spirit has not died. The intensity of the struggle can easily be determined by the relative scarcity of clothes on the survivors. A noticeable atmosphere of nellye argues a hard fought battle.

E PLURIBUS UNUM

THE three university dramatic clubs have agreed to join forces and organize one big group for both men and women. This is a step which augurs well for Wisconsin dramatics.

For years the three clubs, Red Domino, Twelfth Night, and Edwin Booth, have worked separately on a small scale, each trying to accomplish the same thing. They have worked hard and accomplished much, but their effort has been scattered. Decentralization has meant inefficiency, a minimum of return for effort expended.

The coalition which is planned will have great potentialities. It will open opportunities hitherto out of reach.

Mixed membership will be a great advantage to the new organization.

The position of the three clubs has been somewhat ridiculous in years past. Each has had the same purpose, the presentation of plays; but every time one of the clubs has wished to present a play, it has had to call on outsiders for help.

None of itself, was able to accomplish the purpose for which all were organized.

By unity of effort, dramatically inclined students will be able to present more plays and better plays. Stability of organization and continuity of purpose will be possible.

The clubs will be able to lay out and fulfil yearly programs, unhampered by competition, limited only by their own abilities.

WHY NOT BOXING?

ONE athletic sport deserves varsity recognition but has not received it. That activity is boxing. As a collegiate sport it has been growing more popular every year, although it still remains purely intra-mural. There seems to be no good reason why it should not become intercollegiate.

Wrestling is an intercollegiate sport, and has been for some year. It is strange that there should be a discrimination between it and boxing. Boxing is just as scientific as wrestling, if not more so: it demands as systematic and careful training and calls for as much sportsmanship as any activity of an athletic nature. It is no more brutal than other contests and furnishes a spectacle easily as fascinating as is provided by minor sports.

Other universities have included boxing among their intercollegiate sports, and two well known eastern colleges, especially, make much of it. At Wisconsin the number of participants grows each year, and for a purely intra-mural activity it has a large number of enthusiasts.

These enthusiasts feel that their sport should be expanded into an intercollegiate one. As long as boxing attracts the interest that it does and as long as it seems to fill the necessary qualifications, there appears no reason why this interest cannot be stimulated by intercollegiate contests.

HEARD AT THE TICKET BOOTH

"Are you a student?"
"Naw, I just go here,"
"I mean do you study here?"
"Nope, I'm in L. and S."

Parkway Show Is Dignity Chaser, say Happy Audience

BY HICKMAN POWELL

A hero in various stages of intoxication, a heroine in various degrees of apparel; a steamboat, a stateroom; bride and groom, a couple whose reported connubiality was exaggerated; a dress suit and a suit of pajamas; all these combined to make the row of gray-headed ladies in front of us lose their dignity at the Parkway last night.

"Just Married" may not be technically a bedroom farce, but it is a remarkable conglomeration of stateroom escapades. The lines would not pass at prayer meeting; but we fussed and maintained diplomatic relations after the show. So we guess it's all right. It is to be repeated this afternoon and evening.

On general principles we are rather opposed to the lingerie farces which have had such a vogue in the last few years. We like to discuss Shaw and Barker and all the rest of what we learned in our cultural course in the contemporary drama. We like to feel intelligent and declare that beds and B. V. D.'s typify the ultimate in the crass commercialization of the drama.

That is, we feel that way when we are not stuffing a theater program in our mouth to keep from disturbing the peace. On such an occasion we are forced to acknowledge that a tea cup full is just as full as a bath tub full.

"Just Married" is a crowded tea cup.

Sylvia De Frankie, as the leading lady is called on the program, is all that her name implies; her charm and cleverness would make any male beholder envy the luck of the leading man, who, by the way, could give most excellent lessons in the art of comic inebriation.

The company on the whole is first rate, well fitted to fill the teacup. Not a minute does the play drag, and the lines of naive sophistication were executed to the highest degree of their possibilities.

The intelligentsia may scorn "Just Married," but the hoi polloi will flock thither.

SOCIAL WORKER SAYS RESEARCH IS AID TO WORK

Julia Lathrop Discusses Social Problems in Meeting at Music Hall

"The greatest contribution of this university to the solution of social problems is that of serious research and interpretation," Julia Lathrop, first chief of the United States Children's bureau, said in a lecture before the state assembly of social workers at Music hall Thursday.

"Child welfare work is just a pin point in the long procession of which we can see neither the beginning nor the end. The horizon has only recently expanded and we are now beginning to consider all children, those working as well as the well cared for little ones in our homes. Machinery has gained great freedom and the child has the right to freedom."

Modern child welfare work is divided into three phases: infancy of the child, work of the child and education of the child, according to Miss Lathrop. Compulsory education is the best child welfare law and this lies in the hands of the state and not the nation. Congress has never dared venture into the subject of rural and domestic child labor but has contented itself with making laws concerning factory work. Neither has it interfered with the various street trades which are very dangerous and bad for children.

"It is interesting to note that the 1920 statistics show the literacy rate of children of foreign born parents to be three times greater than of children of native born parents. The opportunity for education which America offers is one of the most cherished ideals of our immigrants who bring their children here."

TREASURY BONDS

The Federal Reserve banks have been announced as agents of the treasury department in the issuing of a new series of treasury bonds which will pay 4½ per cent. The issue will be made in two series due in 1947 and 1952.



WELL TODAY is the day of the big rush!

This following article was handed to us by one of the participants.

FOR THE WELL-DRESSED MAN:
The correct thing to wear for the rush.

THE SMARTLY DRESSED MAN will turn out in a dinner jacket. It is quite essential that the participants be well dressed, at least when they start.

THE SHAWL collar effect on the dinner jacket makes it more difficult for the opponent to grab you and it also keeps your collar and shirt-waist from becoming soiled.

A FACING OR PIPING may be worn at the cuff, piping will be the more favored because you can carelessly tap the enemy over the head and lay him out fridgedly.

WING COLLARS will make a fast getaway possible.

A BURLAP waistcoat with sewed pockets will be favored.

TROUSERS may or may not be worn, but it is suggested that participants at least try to begin with them.

TO TOP THIS DANDY effect a inenduster might be worn. This is left to the taste of the wearer.

WIZARD OF OZZ

Once upon a midnight dreary,
When of dancing we were weary,
We took ourselves a little ride
just to look the country o'er.

"OH that's what I get for dating,
And the chaperon is waiting."
Quoth my co-ed as she left me,
"Never more."

WE WERE just thinking.
That on these windy days

Some kind Engineer might contrive
some scheme whereby you
could turn the wind up the hill and
just sort of blow into your 8 o'clock.

WISE CRACK now due; "See
what the wind blew in."

OF COURSE IT'S an ill wind
that blows nobody any good.

THE OTHER DAY
I WAS in a restaurant
AND A FELLOW came in,
AND HE was going to sit down beside me

AND I NOTICED some gum on the chair
SO I said,
"HEY, don't sit on that!"
AND HE turned around
AND SAID,
"I'VE SAT on that for twenty-two years."

GOSH! I NEVER CAN BE A HERO!

THE OTHER DAY STEVE REICHERT went into the barber shop to buy himself one of their very favorite hair-cuts and while he was there, in the chair, he fell asleep and when he woke up the barber had cut all the hair off his dandy new sweater.

LIFE'S LITTLE TRAGEDIES
A one armed guy calling on twin sisters.

There was a young lady from KY.
Who considered herself quite Ly.
She beat up a guy
Who was about to try
TO swipe all her coin. Wasn't that Py.

LAST NIGHT
I CALLED up my young lady-friend
And asked her
IF SHE would like to go to the movies
AND SHE SAID, "Yeth."
SO I went over to call for her
AND HER papa was there
AND WE had to take him along
SO WE really did go to the movies.

Well, as the grave-digger said,
"No bier, no work."

Bulletin Board

FRESHMAN BASKET BALL
Practice will be held until further notice at 7:30 o'clock on Tuesday evenings and at 4:30 on Wednesday and Thursday afternoons every week.

SENIOR SUMMARIES

Seniors who have not received summary cards should get them between 3:30 and 5:30 o'clock any afternoon this week at the Badger office in the Union building.

METHODIST FROSH

Methodist freshmen will hold a freshman party Saturday evening at 1121 University ave.

FROSH TENNIS

First year men playing in the freshman tennis tournament are urged to play their matches as soon as possible in order that the tournament will be over by Monday.

SIGMA DELTA CHI

Sigma Delta Chi will meet at 6 o'clock Sunday night in the banquet room of the Y. M. C. A. Members will go through the cafeteria line and secure their own meals.

BADGER CLUB PICNIC

The Badger club picnic will start at 5 o'clock Saturday afternoon. Meet at the University Y. M. C. A.

BADGER CLUB MEETING

All university men and women are invited to hear President Plantz of Lawrence college speak at a meeting of the Badger club at 8 p. m. Sunday in the Y. M. C. A. parlors. There will be a business meeting for members at 7 p. m. in the cabinet room.

MEN'S FORUM

Students interested in studying the story of the Christian religion are invited to attend the Men's Forum at 9:30 Sunday morning in the Fellowship room of the Y. M. C. A.

LUTHER LEAGUE

Luther League will meet at 6:45 Sunday at Luther Memorial church. George Scarseth will lead. Cost supper and social hour will precede the meeting. Formal installation of the Luther Memorial Student cabinet will take place in the second service at the church Sunday, Oct. 14.

All members are urged to be present.

Keystone Meeting

There will be a keystone meeting at 12:45 next Saturday in the Concert room of Lathrop hall.

PHYSICAL ED. PICNIC

Majors and minors in physical education are invited to attend a picnic at the field house at 6 o'clock Tuesday. Sign names to poster at Lathrop hall or at the field house.

AGRIC TRIANGLE

Agric Triangle will hold a breakfast-banquet in the Y. M. C. A. cafeteria at 8:30 o'clock Sunday morning.

POULTRY TRYOUTS

Those wishing to tryout for the poultry judging team to represent Wisconsin at the Coliseum show will meet at the Poultry building today after the football game.

VESPER SERVICES

Vespers for all university girls will be held Sunday at 4:30 in Lathrop parlors. Helen Kasbeer will speak on her experiences in China. Tea will be served at 5:30 o'clock.

WOMEN VOTERS

Mrs. R. M. LaFollette will address the Collegiate League of Women Voters on the subject of Women and War at 8 o'clock Monday evening at the auditorium of Music hall.

Agric Triangle to Hold Banquet Sunday Morning

Agric Triangle will hold a breakfast-banquet in the Y. M. C. A. cafeteria at 8:30 o'clock tomorrow morning.

Those who attend the banquet will fall in line, cafeteria style to get their breakfast. A special room has been reserved for the club. Prof. G. C. Humphrey, who recently returned from a stock judging trip in South America, will make an address. Professor Humphrey has a variety of fascinating experiences to relate, according to those who have heard him.

Friends of the organization are invited to attend the banquet.

Churches

SECOND CHURCH OF CHRIST, SCIENTIST
263 Langdon
9:45 a. m. Sunday school.
11: Morning service. Subject: "Doctrine of Stonement."
8: p. m. Wednesday evening meeting.

CALVARY LUTHERAN
Wheeler hall, over the Co-Op
9:45 a. m. Bible class.
10:45 Morning service. Subject: "What Think Ye of Christ?"
5:30 p. m. Social hour with cost supper.

LUTHER MEMORIAL
626 University avenue
8: a. m. First service.
9:45 Bible classes.
10:45 Second service. Installation of student cabinet.
5: p. m. Social hour and cost supper.
6:30 Luther league.

MEMORIAL REFORMED
14 West Johnson
9:30 a. m. Sunday school.
10:30 English service.
6:45 p. m. C. E. Meeting. Topic: "True Patriotism, What it is and does."
7:30 Stereopticon lecture on "The Reformed Church at Work," by Rev. J. Friedli, Milwaukee.

FIRST METHODIST
Wisconsin avenue and Dayton
5:30 p. m. Cost supper. Methodist students invited.
6:30 Devotional services.

FIRST UENITARIAN
Wisconsin avenue and Dayton
9:30 a. m. Church school in parish house.
10:30 Regular service. Sermon by Dr. Hayden. Topics: "Liberal Religion and Social Usefulness."
6 p. m. Cost supper in parish house.

UNIVERSITY METHODIST
University avenue and Charter
9:30 a. m. and 12 m. Church school for all ages. Special classes for students.
10:30 Morning worship. Sermon by Pastor.
6 p. m. Cost supper and Epworth league devotional service. The Wesley Forum—Dr. John R. Denyes will speak on "Moslems and the Near East."

FIRST CHURCH OF CHRIST, SCIENTIST
Woman's Building 240 W. Gilman
11 a. m. Morning service. Subject: "Doctrine of Atonement"
9:45 Sunday school.
8 p. m. Wednesday evening meeting.

PRESBYTERIAN HEADQUARTERS
731 State
9:30 a. m. Bible school.
10:45 Preaching services.
5:30 p. m. Social hour and supper.
6:30 Vesper services. Topic: "What part does Faith Play in Religion?"

READ CARDINAL ADS

The Films

You bring to us to be developed as not regarded as so many "jobs" to be done. We look upon them as potential pictures which mean a great deal to you, which you would not lose for a price, and which are therefore worth all the interested personal attention we can give them.

Kodaks and Framing

PHOTOART HOUSE

W. J. Meuer, Pres.

EXTEND SOCIAL WORK. IS PLAN

State Social Workers Hold Final Meeting Here Friday

The extension of social service to every community in Wisconsin is the program of the social workers who convened in a state conference at the state capitol for the past three days.

The final meeting was last night, at which time two addresses were given, "The Philosophy of Immigration" by Miss Ethel Bird, Chicago, of the national board of the Y. W. C. A., and "A National Measure," by Miss Harriet Vittum, head resident of the Northwestern university settlement in Chicago.

Increase Officers
The national organization of social workers originated forty-one years ago at a meeting held in Wisconsin. Now every state has such an organization as a branch of the national society.

Officers for the ensuing year are Mrs. I. P. Witter, Wisconsin Rapids, president; the Rev. M. F. McEvoy, Milwaukee, vice president; Mrs. L. M. Rosig, Milwaukee, secretary; Mrs. A. H. Wilkinsen, of Milwaukee, treasurer, and Mrs. Charles Friend, Milwaukee, chairman of finance.

University Speakers
Prof. J. J. Gillin, Madison, was elected vice-president for the third congressional district. Directors from Madison are Mrs. M. B. Rosenberg; Prof. E. B. Gordon of the University Extension Division, Elizabeth Woods, Mrs. C. J. Otjen, state board of control, and Dr. C. A. Harper, secretary of the state board of health.

The general sessions were given over to lectures and discussion groups on every phase of social service. Speakers from the University of Wisconsin for Friday afternoon were Miss Mary McGovern of the Bradley Memorial hospital; Mr. John S. Donald of the agricultural economics departments; Mrs. Edith Hoyt of the university extension division; Mrs. Nellie K. Jones, of the home economics department; Prof. J. R. Commons of the economics department; and Prof. J. L. Gillin, professor of sociology, and the national head of the educational program of the American Red Cross.

READ CARDINAL ADS

Orpheum
MATINEE EVERY DAY—3 P. M.
EVENINGS—7:15 AND 9 P. M.

TODAY
LAST TIMES TO SEE
MRS. EVA FAY

THE HIGH PRIESTESS OF MYSTICISM

Echoes of Scotland
A Scotch-Irish Revue

RUBIN & HALL
"I Don't Wanna"

HUGO LUTGENS
"The Swedish Billy Sunday"

TWO OTHER ACTS

NEW SHOW
Starting Tomorrow Matinee
Geo. Lovett & Co.

"Concentration"

Assisted by Wonderful Georgia Templeton and the Incomparable Mysterious Orchestra.

Chas. Wilson
"The Loose Nut"

Nancy Boyer & Co.
—in—
"MARL LOU"
A Comedy of Today
THREE OTHER ACTS

CO-ED NEWIES GIVE RECEPTION

Senior Women in Journalism Entertain Frosh With "Dumb Show"

A "dumb show" was the special feature of the reception given to the freshmen women of the Course in Journalism from 3:30 to 6 yesterday afternoon in Lathrop parlors.

The little play, which was a take-off on the history of the journalism class, was written by Elizabeth Wadmond '23. As Dane Vermillion '23 read it, the pantomime was acted out with Merle Shaw '23 as heroine, Anna Stoffregen '23 portraying Prof. E. M. Johnson, and Nella Burgess '24 as William Randolph Hearst.

The reception was given by the senior women of the Course in Journalism but it was under the

auspices of Theta Sigma Phi, Journalistic sorority. Marjorie Ruff '23 president of the organization, gave the welcome to the new students and explained definitely the aims and ideals of Theta Sigma Phi.

WESTMINISTER GUILD

The Westminster Guild will hold a supper and meeting Monday night in Presbyterian headquarters, 731 State street. Notify office before

CHILI AL'S CAFE

Chili Con Carne
Steaks and Chops
Hot Weiners 5c
613 State St.
MADISON, WIS.

RIDER'S MASTERPEN

Won't Run Dry in Lecture
666 STATE ST.

Monday noon if you will attend supper at 6 o'clock.

READ CARDINAL ADS

You can feel perfectly at east about QUALITY in Cop's

FOOD

It's the best obtainable—and it's priced right, too.

The Two Best Places To Eat
Home & Cop's Cafe

TONIGHT

—AT—

Lathrop Parlors Fairbank's Orchestra

"The best Crowd, the best Music, the best Floor"

THE WISCONSIN UNION DANCES

November Brunswick Records Just Out--

"Haunting Blues"—

"Blue" ----- Bennie Krueger's Orchestra

"Say It While Dancing"—

"Are You Playing Fair" ----- Isham Jones Orchestra

"The World is Waiting for the Sunrise"—

"Eleanor" ----- Isham Jones

"Broth'n Law Dan"—

"Dixie Highway" ----- Marion Harris

"Way Down Yonder in New Orleans"—

"True Blue Sam" ----- Margaret Young

"On Wings of Song"—

"Tarantella Venezia E Napoli" ----- Leopold Godowsky

"Danny Deever"—

"Clang of the Forge" ----- Richard Bonelli

and a number of others just as good

University Music Shop, Inc.

at 511 State St.

Ph. Bad. 7272

"The Shop With a Personality"

Social Notes

Feature Party Of Theta Xi

Members of Theta Xi will give a "Feature Dance" this evening at the chapter house, 168 Prospect ave. The only out-of-town guest will be Sidney L. Wieland, Milwaukee. Prof. and Mrs. C. I. Corp will act as chaperons.

Tau Kappa Epsilon Opening Formal

Cherry and grey will be the color scheme carried in decorating for the Tau Kappa Epsilon formal dance to be given this evening at the chapter house, 216 Langdon street. It is to be the first function given in the new house.

Among the out-of-town guests are Mr. Roy Bethke and Mr. Roger Mueck, both of Chicago, and Mr. Herman Siepen, Sheboygan.

Those to chaperon are Mr. and Mrs. Harry Mirick and Mr. and Mrs. J. S. Miller.

Theta Chi House Dance

Red and blue will be used in the decorations and the lighting effects for the Theta Chi dance to be given this evening at the chapter house, 140 West Gilman street.

Miss Senta Schultzs, Miss Gladys Hutching, Miss Ila Mueller and Mr. Raymond Bartels, all of Milwaukee will be the guests.

Phi Beta Pi Informal Party

Members of Phi Beta Pi, medical fraternity, will entertain with a dance this evening at the chapter house, 416 North Carroll street. Those invited to chaperon are Dr. and Mrs. A. S. Paerse and Mr. and Mrs. John Lingselder.

Phi Kappa Psi Informal Dance

Members of Phi Kappa Psi fraternity will entertain with an informal dance this evening at the Park hotel. Prof. and Mrs. D. D. Leschier will act as chaperons.

Phi Alpha Delta Party for Pledges

The active chapter of Phi Alpha Delta is giving an informal dance for their pledges this evening at

the chapter house, 271 Langdon street.

Col. and Mrs. Ralph Immel and Mr. and Mrs. William Meur will act as chaperons.

Chi Psi To Entertain

Alpha Iota of Chi Psi will entertain informally with a dance this evening at the chapter lodge, 150 Iota court. Dr. and Mrs. Carl Harper have been invited to chaperon.

Alpha Phi Delta House Dance

Alpha Phi Delta will entertain with an informal dancing party this evening at the chapter house.

Among the out-of-town guests are Mr. Fred Hess and Mr. W. J. Hintz, from Northwestern university; Mr. Harold Groth, Sheboygan; and Mr. Art Nelson, Chicago.

Nigma Pi Dance

Honoring Pledges

Tau of Sigma Pi will give a dancing party this evening honoring their pledges at the chapter house, 520 University avenue. Miss Myrtle Jobse will chaperon the party.

Kamera Kraft Shop to Print Frat Directory

Following the precedent of last year, the Kamera Kraft shop will again issue a Greek letter directory. It is planned to make a permanent

Kehl's School of Dancing

Class for Students every Friday Eve. 8-10.

Private lessons by appointment.
Studio 3-5 N. Pinckney St.
Phones: F. 561; B. 1770

IF YOU CAN WALK I CAN TEACH YOU TO DANCE Valentino Fox Trot

Is just one of the new dances this fall. They're all smart—and easy to learn.
A Special Course for Beginners
7 West Main Sari Fields Badger 1806

file of these issues in conjunction with the Pictorial review at the Photo Art shop.

The cards from which the directory is to be compiled are now being distributed to the various groups. It is asked that they be returned by Monday to the Kamera Kraft shop. The directories will be distributed free of charge to fraternities and sororities.

J. J. Griffin Chiropractor

Palmer Graduate

417 Washington Bldg.

Phone—B. 656 Home, B. 6145

Besides the Greek roster, there will be included other data of interest. A calendar telephone directory and football and basketball directories will also be printed. It will appear on November 11.

You'll Enjoy A Brick of Velvet Ice Cream

This afternoon or tonight when you are studying and you begin to get hungry, go out and buy a brick of Velvet Ice Cream and split with your room-mate.

Kennedy Dairy Company

Sole Manufacturers of Velvet Ice Cream

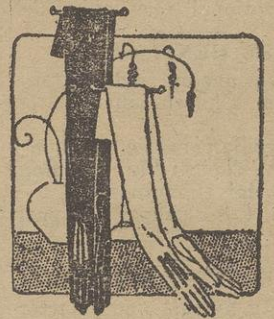
629 W. Washington Ave.

Badger 2751

Harry S. Manchester, Inc.

Long Kid Gloves, Special

\$4.75



Your chance to buy the pair of long kid gloves you have been needing—a big saving! These gloves come in black, white, gray, beaver, or brown, with heavily embroidered backs in self or contrasting colors. Very special.

Gym Bloomers of Serge Reduced 20%

Good quality wool bloomers of black serge in regulation plaited style. Waist bands have special adjustable hooks.

Sateen Bloomers, \$1.50 and \$2.75

Regulation style plaited bloomers of black sateen. Some have adjustable waist bands.

New Coats of Rare Beauty

\$37.50 to \$185

A wonderful time to buy coats—they are so charmingly graceful! Luxurious collars of fur that fit snugly about the chin; wrappy lines, or perhaps a bloused style, of recent favor; sleeves that achieve all manner of beauty in their full widths, plain, or banded with fur to the point of muffiness. This, in short, is the Autumn mode.

Materials are a joy to wear—Gerona, Veldyne, Tarquina, Marvella, Marleen, and Fashona in rich shades of brown, black, beaver, or navy.

Clever sport coats offer a splendid choice. They come in mannish tweeds, some with fur collars. Snowflake tweeds are smart indeed at \$29.50 and up.



Specials for Saturday

Delicious home-made coffee cake...20c-25c

Cheese Pie15c

Buttered Parkerhouse Rolls, per doz. 20c

Delicious Maple Cinnamon rolls, per doz.25c

Caramel Rolls (individual pan),.....15c

Orange Coffee roll (fresh fruit).....25c

Cream Puffs
Choc. Eclaires
Napoleons

Cream Rolls
Apple Turnover
Charlotte Russe

Visit our Cafeteria with Table Service

Excellent Salads and Sandwiches
served after the show

ROAST CHICKEN 1 BAKED BEANS
Alwa hand

We deliver orders over \$1.00

The Goody Shop

412 State St.

Badger 5640

GUN OPENS ANNUAL CLASS RUSH TODAY

(Continued from page 1)

gymnasium annex at the same time and will blacken their faces to distinguish themselves from the second year men. Upperclassmen will give the yearlings instructions in the annex as to their conduct in the rush.

Inaugurated In 1901

From all available information the class rush probably was inaugurated at Wisconsin in 1901, although hazing and some form of lake parties were common for many years before that time. In 1901 the contest took definite form.

The freshmen gathered in the gymnasium and the sophomores lined up outside the door. When sophomores broke into the gym and attempted to force the first year men into the lake. From that point on it was a case of ducking the other fellow.

Of the 21 rushes held since 1900 the freshmen have been victorious 13 times, the sophomores 7, and one resulted in a draw. It is interesting to note that six of the seven victories won by the sophomores were registered since 1909 while history before that time favors the freshmen.

LARSON ADDRESSES ENGINEER GROUP

"The American Society of Mechanical Engineers, the biggest of the four principal engineering societies at the present time and has a membership of over 15,000," Prof. G. L. Larson, of the Steam and Gas Department, declared at a meeting of the student section Thursday night.

Mr. Raymond Roark, assistant professor of mechanics, also addressed the meeting, making a plea to keep professional spirit in the meetings, and to avoid allowing specialization and commercialism to slip into the consideration of any purely professional subjects.

"We will try to make all the meetings as pleasant and as profitable as possible throughout the year," said Pres. Raub. "Our policy is to have the various members prepare papers to be presented at various times throughout the year."

EVA FAY

At Orpheum This Week



Classified Ads

Classified advertisements must be sent to the office of The Daily Cardinal in the Union building, 752 Langdon street, before 5 o'clock of the afternoon of the day preceding date of publication and must be paid in advance. Rates are one and one-half cents a word with a minimum charge of 25c.

FLAHERTY'S RENT A CAR—Drive it yourself. New location. Purcell-Wischan garage. New cars fully insured. Fairchild 334. tt

We Make

KEYS

Harloff-Loprich Electric Co.
Corner State and Frances

BOARD AND ROOM for gentlemen. 19 S. Orchard. 6x10

FOR RENT—Single room. 316 N. Lake. B-4892. 4x12

TUTORING in French, Spanish and Latin by graduate student. Call F-184. 4x12

WANTED—Man roommate by upper classman. Very good furnishings and accommodations. Very quiet surroundings. B-7962 Apt. B-2. 433 W. Gilman. 3x12

FOR RENT—Two double rooms for girls, nicely furnished, at \$3.00 each occupant. Suppers if desired. B-7446 435 W. Dayton. 3x12

STUDENTS washing and ironing. Also bundle washing done at 125 N. Lake. 3x12

FOR SALE—Ford runabout newly overhauled. Inquire University club noons or between 5 and 7 p. m. 2x12

WANTED—Student to assist in the care of children. No house work.

MORGAN'S MALTED MILK

Boncilla

BEAUTY SHOPPE

Commercial National Bank Building

Rooms 305-309

Fairchild 2288

Blanche D. Moss Grace G. Stanbury

Address 1903 Madison St. or call B-6973. 3x13

LOST—Gold fountain pen. Initials A. C. Between Sterling Hall and W. Johnson or Brooks St. Reward. Finder call B-4814. 2x13

LOST — Tennis racket, ball and shoes. Call F-2255. Reward. 2x13

BOARDERS WANTED — Good home cooking one block from university. Twenty meals for \$6.50. 226 N. Orchard. Phone F-2659. 5x14

First class stenography and typewriting done at reasonable rates at 307 Beaver Bldg. (next to Orpheum theater). Mrs. Kissam. Phone B-304. 6x14

FOR SALE — Civilian raincoats. Less than \$5.00; snappy models; no obligation to purchase. Call B-158. 2x14

LOST—Green steamer trunk. Wayland Academy Seal on top. Last seen on first floor of Bachelor Apts. Reward. Call Dendricks.

HINKSON'S
644 STATE ST.
Recreation & Refreshments

B-1312. 3x14

ROOM FOR RENT—Double room for men. All modern conveniences. Close to university. 1020 W. Dayton. B-6259. 1x14

GIRL STUDENTS wanted to assist with housework and care of children, exchange for room and board. 914 Jenifer F-1024. 2x14

RIDER'S

MASTERPEN

The Pen with the Smooth Grip
666 STATE ST.

Dr. Elva J. Lyman

OSTEOPATH

213 N. Hamilton St.
R. 3100

"Dr. Tilden food combination used"

WHY?

Meet in the afternoons at

The Candy Shop
426 State St.

"Have Them Made to Fit You" Two Pants Suits

Made to your individual measure for less than ready mades.

FEATURE VALUES

\$35 — \$40 — \$45

Hundreds of Combinations in Fall Fashions and fabrics for your selections in guaranteed qualities.

"Shop Around, Then Come Here"

Monfried's
219 STATE ST.

Look Boys! Our Specials for Saturday Only

Golf and Sport Hose

All Wool, in all Colors, pair

\$1.45

Fine Knit Ties

Sold up to \$2.00, now

79c

Leather Vests

Genuine Havana Brown, all Wool lined,
\$18.00 value, now

\$11.85

Genuine Lamb Coats

Drab, Mole, Lamb Lined, Wombat Collar,
Belted All Around 36 inch Length

\$14.75

Square Clothes Shop

435 State St.

SELLING OUT GEIER'S ENTIRE
BANKRUPT STOCK

Keep Warm At the Game

If you are not ready to buy your heavy overcoat, we suggest that you slip into a knit coat, leather coat or sweater. If you were out last Saturday you know the wind gets cold.

Wool hose, for men and women, gloves, underwear, etc., all ready for you.

The Co-Op

E. J. Grady, Mgr.

U. W. WOMEN TO CONVENE HERE

Hold Fourth Conference
State Members of Association
October 27, 28

The Wisconsin federation of branches of the American Association of University Women will hold its fourth conference in Madison on October 27 and 28.

During the meeting the Madison branch will entertain the other eleven state chapters which are located in Beloit, Fond du Lac, Appleton, Kenosha, La Crosse, Oshkosh, Ripon, Superior, Wausau, Milwaukee, and Beaver Dam. Each branch will be represented by two or more delegates.

Reception At Birge Home

The first session will be a reception at the home of President Birge on Friday afternoon. An address will be made by Mrs. Henry C. Adams of Ann Arbor, who is the vice-president and sectional director of the northwestern district of A. A. U. W.

There will be both morning and afternoon sessions on Saturday in Lathrop parlors. A luncheon will be given by the Madison branch in Lathrop at noon, and afterwards a tour of the campus will be made.

Secretary To Speak

Among the speakers on Saturday will be Mrs. Frances F. Bernard, educational secretary of A. A. U. W. with headquarters in Washington, D. C. at the national club house. The Madison branch will attend all meetings, and the members will open their homes to the delegates.

The officers of the Wisconsin federation are: president, Miss Frances G. Perkins, Fond du Lac, formerly a regent of the university; vice-president, Mrs. George H. Wahl, Milwaukee; secretary - treasurer, Mrs. Charles A. Pope, Kenosha.

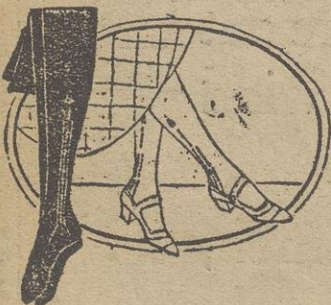
Dean Nardin Appoints Committee

Dean F. Louise Nardin, president of the Madison chapter, has appointed for the conference as a committee on arrangements: Miss Mary Emogene Hazeltine, chairman; Miss Jane Sherrill, Mrs. W. H. Klekhofer, Miss Anna G. Birge, Mrs. Edward W. Blakeman, Mrs. A. W. Schorger, Mrs. O. L. Kowalke, Mrs. Frank Morrison, Miss Jean Hoard, Mrs. H. P. Greeley, and Mrs. Clara B. Flett.

Every woman graduate of the University of Wisconsin is eligible to become a member of the American Association of University Women. Its purpose, primarily, is to further educational standards, and to influence educational legislation. There are now such organizations in England, France, and Germany, and the Orient.

SINGER'S

Quality Hosiery



Hosiery that is distinctive, that is individual in style, that fits snug around the ankles, and in the desired shades. Our immense showing is bound to satisfy the most exacting.

Walk-Over

BOOT SHOP

611 State Street

N. E. Kelley Describes Work of Boys' Clubs

Work of the Union League Boys' club, Chicago, was described by H. E. Kelly, Chicago. Friday noon before 100 men social welfare work-

ers at the Baptist church. Mr. Kelly told of the decrease of crime in one of the worst districts of Chicago since the formation of the Union League Boys' club. In two years time, according to Mr. Kelly, crime has decreased in the district

100 per cent, due directly to the welfare work carried on by his organization.

E. A. Hathway, state secretary of the Y. M. C. A. stressed the importance of welfare among the boys in the rural communities as well as

in the cities. L. A. Ruger, boy scout executive, told of the work being done by Scouts throughout the country. Judge M. B. Rosenberry acted as chairman.

READ CARDINAL ADS

The Crescent Clothing Co. Announces The Opening Of Their New Enlarged Store

The work of altering and enlarging our store has been completed. Our floor space has been doubled. We have taken over the entire second floor of our building. We now have a NEW STORE in every sense of the word.

We have achieved our ambition to give Madison one of the largest and finest clothing stores in the state. Here's a store for men that conforms to the new standard for beauty of appointment—a store that may well be termed a landmark in our history.

The second floor will be devoted exclusively to clothing for men and young men. It is strictly a daylight store. A large attractive show window running from the floor to the ceiling admits a veritable flood of daylight which will make it easy for our customers to make their selections.

Our store is newly equipped. We have installed the finest fixtures to be had both from the standpoint of beauty and convenience in displaying merchandise.

This new store is yours to use and enjoy. You'll find here the highest standard of men's, young men's clothing and furnishings. You will be rendered the same sincerely courteous service that has made The Crescent a popular shop among the students and faculty who keep abreast of the times and seek good, dependable clothes and furnishings that represent the last word in dignified style.

Come to this "New Old" Store—your store—It will have a cordial welcome for you then and always thereafter.

The Crescent
CLOTHING CO
Specialists in Apparel for Men & Boys

Extra!
Special values in
Stratford Suits
at
\$40 & \$45