



# LIBRARIES

UNIVERSITY OF WISCONSIN-MADISON

## **Official program of Manitowoc County Centennial : June 28 thru July 5, 1836-1936, historical and pictorial review with daily events. 1936**

Manitowoc, Wisconsin: Color Craft Printers in Cooperation with  
Merchants and Manufacturers Association, 1936

<https://digital.library.wisc.edu/1711.dl/IQODA3N3XL3DT8R>

Images cannot be copied or reproduced without the written permission of  
the Manitowoc Public Library. For information on re-use, see  
<http://digital.library.wisc.edu/1711.dl/Copyright>

The libraries provide public access to a wide range of material, including online exhibits, digitized  
collections, archival finding aids, our catalog, online articles, and a growing range of materials in many  
media.

When possible, we provide rights information in catalog records, finding aids, and other metadata that  
accompanies collections or items. However, it is always the user's obligation to evaluate copyright and  
rights issues in light of their own use.

Official  
**PROGRAM**  
of  
**MANITOWOC COUNTY**  
**CENTENNIAL**

JUNE 28

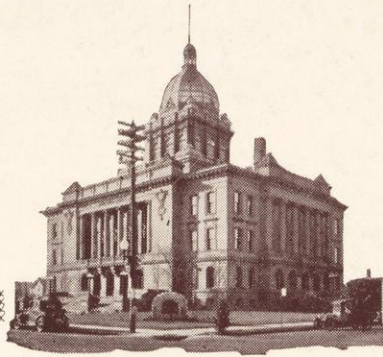
*thru*  
JULY 5

MANITOWOC  
WISCONSIN

1836 · HISTORICAL AND PICTORIAL REVIEW WITH DAILY EVENTS · 1936

PRICE 15 CENTS





MANITOWISH

*The City of Opportunity*

MTWC 977.567 Merch  
Merchants and Manufacturers  
Official program of  
Manitowoc county  
Manitowoc Public Library  
33128001098854

# *Table of Contents*

**Origin of Name**

**Manitowoc Invites You**

**Pictures of Downtown Section**

**Skyline and Harbor View**

**Industrial Plant Views**

**Airplane View of Manitowoc of Today**

**Manitowoc's Beautiful Homes**

**Municipal Plants**

**Committees and Centennial Program**

**History of Manitowoc Industry**

**Manitowoc Parks and Playgrounds**

**Manitowoc Public Schools**

**Additional Pictorials**

**List of Donors**

Compiled and Published by  
COLOR CRAFT PRINTERS, INC.

In Co-operation with the Merchants and Manufacturers Association  
MANITOWOC — WISCONSIN

# MANITOWOC

**Origin of Name** — Manitowoc is an Indian name and means, "The Home of the Great Spirit". About one hundred years ago this country was the Indian's "Garden of Eden", a veritable paradise, with the majestic River flowing thru the woodland and with fish and game plentiful.

**Founded** — Manitowoc saw its start in this world about the year 1835. Investors from the east during the land speculation at that time thought well of the sheltered bay on this side of the lake shore and laid out a town site. Their visions were of a city connected with Lake Winnebago via canals and with the Mississippi River via the new railroad.

While things as planned did not carry thru, Manitowoc today is considered one of the terminal points for transfer of freight across Lake Michigan. This little village endured many hardships in its early days — panics, lack of cohesion in planning and many other factors retarded its growth. Yet as far back as 1847 wooden ships were being constructed here for use on the Great Lakes.

**Made City** — Finely came a harbor development backed by the leading citizens of the community. Immediately after this development the community united to form a corporation. This was in the year 1870.

**Government** — The government of the city of Manitowoc is the Aldermanic form, having fourteen members in the council and the Mayor. The city is divided into seven wards, each ward having two aldermen elected for a term of two years alternately, so that one-half of the council is elected each year. The City Council elects a City Clerk, City Assessor, and City Physician annually, the building inspector being elected for a term of two years by the same council.

The Mayor appoints, subject to confirmation by the aldermen, the City Attorney, City Engineer, Health Commissioner and Harbor Master.

Thus far, this form of city government has proven highly successful as you will note from the various articles listed in the program. Manitowoc has accomplished much even through the depression, and thanks to our many industries paying taxes, has been able to steadily increase its public improvements from year to year. The City of Manitowoc is a thriving industrial center of approximately 25,000 population.

**Taxes** — Taxes of the City of Manitowoc are levied because of and for the operation of city activities including interest and principal in bonds, issued for construction of schools—paving of streets—building of bridges—schools, etc. The average tax rate for the past six years, including State, County

and School tax was 20.56 per thousand, and an averaged assessed valuation of approximately \$40,787,168.00.

During the past few years, taxes have been reduced slightly in spite of our relief department, and others from whom there has been an urgent call for money. In 1932 the rate was 22.01 per thousand, in 1931 22.51, 1930 23.98 and 1929, the peak year, 26.40 per thousand.

**Public Relief** — Our Relief Department is under the able management of men who are efficient in handling this type of work. The entire department is then directly responsible to the Mayor and Aldermen. Two Aldermen from this city, the Mayor and a representative from the city of Kiel and the Town of Rapids, are also on the board. Included in the unit on relief are: the City of Manitowoc, City of Kiel, Village of Valders, City of New Holstein and the Town of Manitowoc Rapids.

The "Community Chest" into which all people donate what ever they wish is not for relief altho certain sums have been proportioned for this purpose.

**Public Safety** — The City of Manitowoc maintains a police force of 18 men including four motorcycle men and the chief.

The Fire Department consists of 30 members including the chief. We have two fire stations equipped with up to date equipment necessary for fighting all types of fires.

The supervision for safety on new and remodeled buildings as far as plumbing, building and electrical fixtures is concerned is directly under the building inspector. All such material used must be fully approved by his department before the final release is given.

Our health department is directly responsible to the health commissioner and health officer, who enforces all regulations for the safety of the public's health.

**A Convention City** — Manitowoc could very properly be hailed as "The Convention City" for every natural and physical attribute, every man provided facility that contribute to the success of such gatherings is numbered among MANITOWOC'S assets.

Here, where beauty of landscape combines with the fascination of the ever changing Lake Michigan, you will find superb convention setting. Excellent highways, beautiful foliage, splendid hotels, generous and friendly hospitality, and many other delightful features are yours to enjoy and remember. MANITOWOC, on every occasion, has proven that it has adequate convention facilities for every need and purpose and every convention group has been generous in its praise.

# MANITOWOC INVITES YOU

The Manitowoc Association of Commerce was organized in 1923 to foster, promote and protect the civic, commercial industrial and social welfare of the city and county of Manitowoc.

In leadership today, as in business, a community looks to organization. This body comprises in its membership the public spirited men of the city and county. Their thought and planning are in the cause of the advancement of Manitowoc. To this end they give freely of their time and effort. A progressive and prosperous community is their richest reward.

## WE WANT YOU TO LIKE MANITOWOC

Manitowoc is one of the foremost industrial cities in Wisconsin, famous the country over for her aluminum factory, her malt houses, the largest in the world, her shipbuilding docks, her machine shops, and her large metal furniture and canning plants. Box, vinegar, breweries, cement and other industries make this a city of diversified industry. But, first of all, Manitowoc is a city of homes and of real people. Out of a population of more than 24,000, more than 66 per cent own their own homes.

Manitowoc's trade area is served by one of the most pro-gressive papers in the State of Wisconsin. The Manitowoc Herald Times as of 1935-1936, had a circulation of 10,600. This paper is read in more than 96 per cent of all the homes in the city and county of Manitowoc.

## SOME STATISTICS ON THE CITY OF MANITOWOC

February 16, 1936

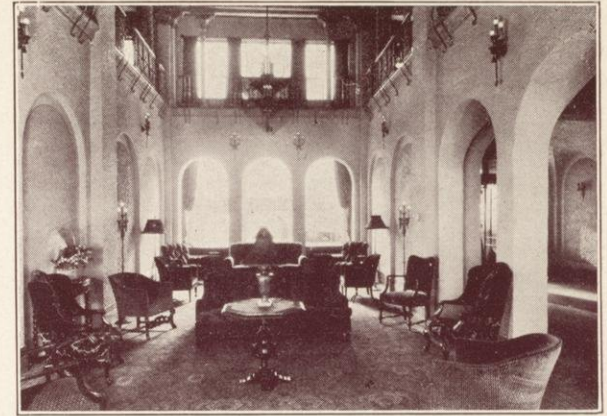
Manitowoc statistics for the year 1935, unless noted otherwise, compiled by Merchants and Manufacturers Association, Manitowoc, Wisconsin

Area.....	7.5 square miles	Value of New Homes.....	\$301,682.00				
Form of Government.....	Aldermanic	No. of Banks.....	3				
Population.....	22,693 (1930 census)	Total Assets.....	\$10,734,086.00				
Population.....	24,800 (1935 estimate)	Total Deposits.....	\$9,315,790.00				
No. of Families.....	5,686 (1930 census)	No. Trust Companies.....	2				
Home Owner Families.....	3,439 (1930 census)	Total Resources.....	\$289,921.00				
Average No. in Family.....	3.42 (1930 census)	No. Bldg. and Loan Associations.....	1				
No. of workers for gain.....	9,730 (1930 census)	Total Assets.....	\$1,636,584.00				
Native born.....	21,060 (1930 census)	Bank Clearings.....	\$13,612,477.16				
Foreign born.....	1,903 (1930 census)	No. of Public Schools.....	<table border="0"> <tr><td>1 High School</td></tr> <tr><td>2 Junior High Schools</td></tr> <tr><td>7 Grade Schools</td></tr> <tr><td>1 Vocational School</td></tr> </table>	1 High School	2 Junior High Schools	7 Grade Schools	1 Vocational School
1 High School							
2 Junior High Schools							
7 Grade Schools							
1 Vocational School							
No. of Manufacturing Plants.....	53 (1933 census)	No. of Parochial Schools.....	8				
Average No. of Wage Earners.....	2,329 (1933 census)	No. of Churches.....	17 (8 denominations)				
Wages.....	\$2,144,415 (1933 census)	No. of Theatres.....	4 (3300 capacity)				
Value of Products.....	\$17,352,376 (1933 census)	No. Hotels.....	3 (250 rooms)				
No. of Retail Stores.....	325 (1930 census)	No. Railroads.....	(C. & N.W. & Soo Line)				
Average No. of Employees.....	1,832	No. of Bus Lines.....	4				
Salaries and Wages.....	\$1,381,000	No. Carferry Lines.....	2 (Ann Arbor & Pere Marquette)				
Net Sales.....	\$14,020,000	Public Libraries.....	1 (and 2 branches)				
No. of Wholesale Establishments.....	26 (1930 census)	No. Volumes in Library.....	39,445				
Average No. of Employees.....	386	No. Hospitals.....	1 (215 beds)				
Salaries and Wages.....	\$678,260 (1930 census)	No. Parks.....	9 (172 acres)				
Net Sales.....	\$18,138,393 (1930 census)	Altitude of City.....	598 ft. above sea level				
No. of Dwellings.....	4,530	Average Temperature.....	45.3 degrees				
No. of Radio Sets.....	3,467	Total Rainfall.....	26.96 inches				
Assessed Valuation.....	\$41,267,168.00	No. Miles Streets.....	80				
Bonded Indebtedness.....	\$1,481,000	No. Miles Paved.....	39				
Tax Rate.....	\$23.00 per M	No. Miles Storm and Sanitary Sewers.....	188				
Trade Area.....	602 square miles	No. Miles Water Mains.....	84				
Trade Area Population.....	59,000	No. Water Meters.....	4,891				
Postal Receipts.....	\$149,376	No. Light Meters.....	6,552				
No. Telephones in Service.....	5,451	No. Gas Meters.....	4,368				
Total Value Building Permits.....	\$546,142.00						
New Homes Constructed.....	73—1935						

# A few principal downtown Buildings



S. S. Kresge Building



Hotel Manitowoc—Lounge



Manitowoc Savings Bank Bldg.



Hotel Manitowoc



Woods Block—J. C. Penny Co.



The Henderson-Hoyt Co.



Schuette Bros. Dept. Store



Commerce Building





OUTER HARBOR SCENE — STEAMSHIP SOUTH AMERICAN — STEAMSHIP THEODORE ROOSEVELT—Inset

## THE HARBOR — MANITOWOC'S GREATEST ASSET

Here in Manitowoc you will find the best harbor on Lake Michigan and because of its natural situation this city has, ever since its inception, been a prominent marine port.

The Manitowoc River is navigable for a great distance up stream. The largest Lake boats can enter without fear to discharge their cargoes with ease, at the upper or lower docks.

The Harbor and River are open throughout the entire winter and carferries operated by the Pere Marquette and Ann Arbor Railways are continually loading and unloading at either the upper or lower slips.

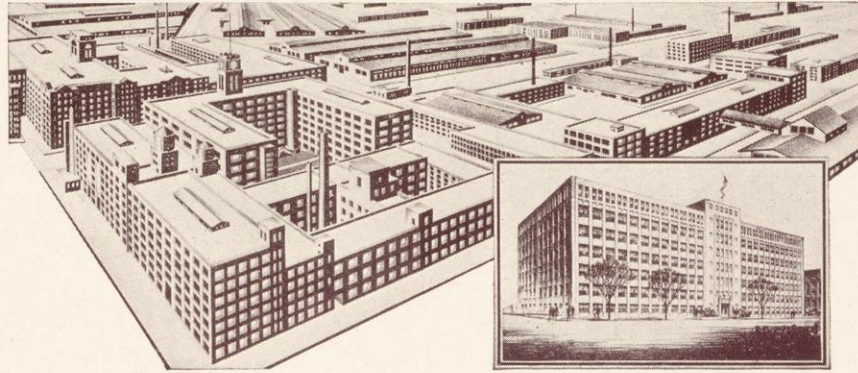
Train loads of freight are constantly being carried across the Lake by these boats, to be routed to their various points throughout the Middle West, thereby saving the trip via Chicago. Return freight for the East is likewise carried across in the same manner.

# Industrial Plant Views of Manitowoc



1

Northern Wisconsin Produce Co.



Aluminum Goods Manufacturing Co.



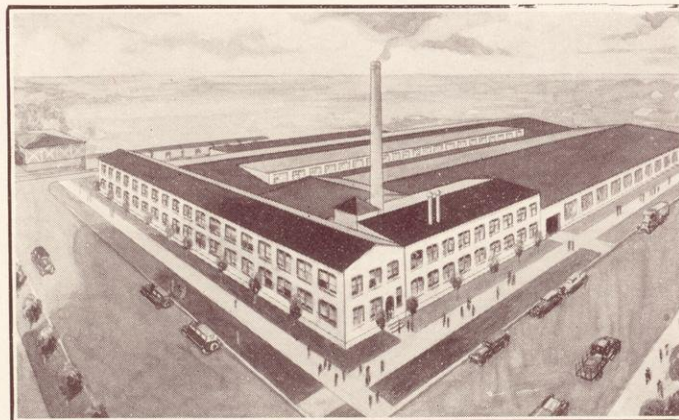
White House Milk Co.



Rahr Malting Company



National Tinsel Co.



Invincible Metal Furniture Co.



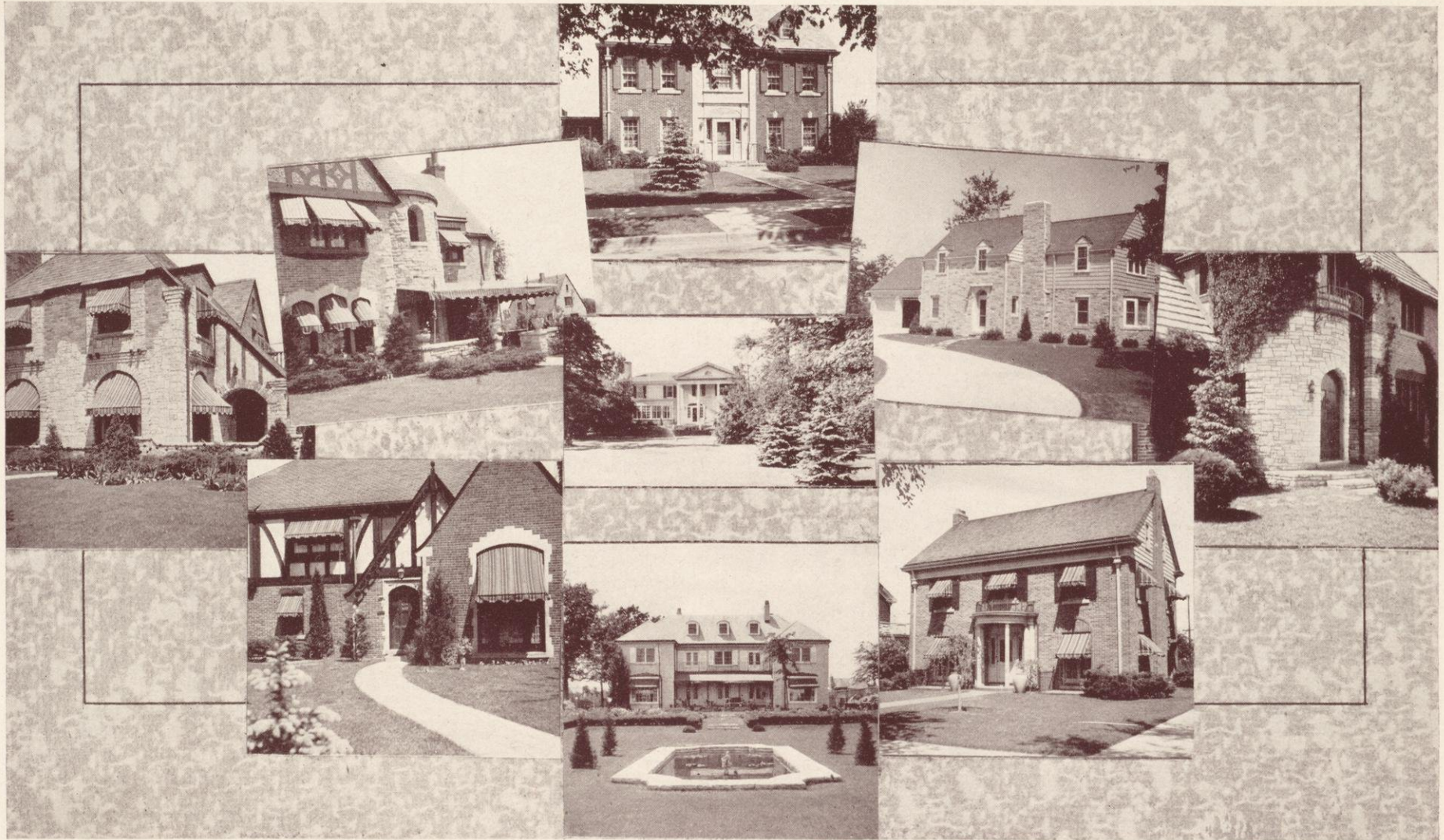
Wisconsin Aluminum Foundry



Airplane View of Industrial Section and Harbor, Manitowoc, Wis.

***A century ago Manitowoc was the Indian's "Garden of Eden" a veritable paradise with the majestic Manitowoc River flowing through its woodlands. Manitowoc is an Indian name meaning the home or abode of "Manitou" the great spirit of the Indians. With their passing came progress; forests were cleared and today it ranks among the leading cities of Wisconsin.***

# MANITOWOC THE CITY OF BEAUTIFUL HOMES



The business and professional life of the city is supported in a large measure, by peaceful and contented workmen who, without exception, take pride in maintaining attractive homes and inviting surroundings. These industrious and provident workmen and women perform their respective duties of citizenship by contributing liberally to every movement which has for its purpose the further development of the industrial side of the city and the advancement of the educational and social life of the community.

The city itself boasts of its improved streets, most of which are paved with concrete; its extended water and sewer systems, full police protection, adequate fire protection, furnished by a completely motorized department

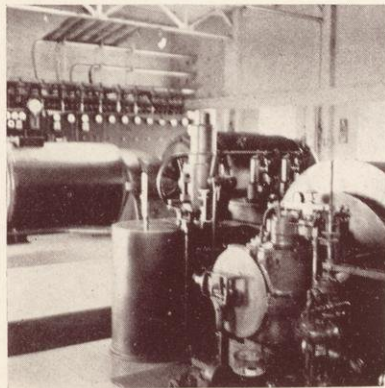
and manned by courageous and efficient fire-fighters; its excellent school-houses and churches, fine parks, bathing beaches and other recreational spots well distributed throughout the city, together with many other advantageous facilities and improvements of which it may well be proud.

From every viewpoint, the city of Manitowoc is one of the cleanest, healthiest and most inviting cities extant in which to promote and enjoy a real home life. Annals of the police department show a surprisingly few number of serious crimes committed in the city, and this outstanding proof of morality is also found in the rural districts of the county.

# Municipally Owned Light and Water Plant -- Airport



**WATER PLANT:** From 5 mammoth wells having a capacity of five million gallons a day, clear water is distributed to all homes and factories. These wells, many feet deep, are fed by underground springs. Water clear, cool, sparkling, rich in properties necessary for drinking can be had by merely turning on the faucet in any Manitowoc establishment. Steam and electric pumps are used to bring the water to every home. There are over fifty-six miles of six to sixteen inch diameter cast iron mains and over four hundred fire hydrants connected thereto. This assures Manitowoc ample water supply for all occasions.

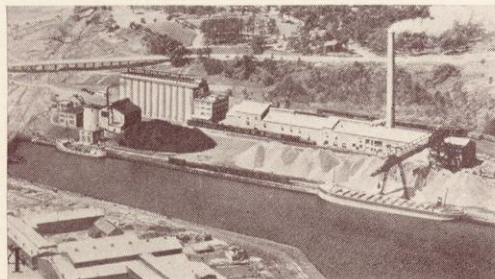
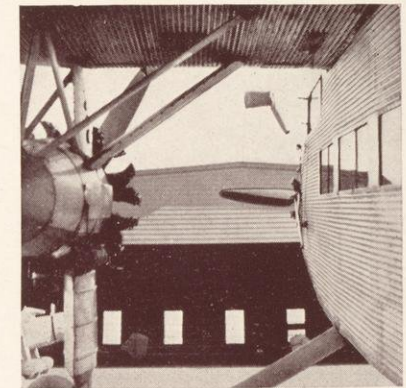


**ELECTRIC LIGHT PLANT:** The electric power plant of 10,000 K. W. capacity is an outstanding example of accomplishment and is a barometer of the progressiveness of our city. When this plant was acquired from private interests 15 years ago its output was but 800 K. W. The new plant was started in 1917. Three substantial additions have been made since and with each addition a reduction of rates was made possible, until Manitowoc now boasts of one of the lowest rates in the state.



The Manitowoc municipal airport is located immediately outside the city limits on highway 10, and comprises 135 acres, all level ground. A modern brick and a wooden hangar are able to accommodate 14 planes. An attendant is always on duty to extend any courtesies possible to visiting fliers.

The word Manitowoc is painted in large letters on the roof of the Aluminum Goods Mfg. Company building to guide fliers enroute. The citizens of Manitowoc are very enthusiastic about aviation and already quite a number of planes are owned and operated by local people.



Wisconsin's Only Cement Plant



Harbor View



C. Reiss Coal Co. Dock

# COMPLETE LIST OF CENTENNIAL COMMITTEES AND SPONSORING ORGANIZATIONS

## Board of Directors

John G. Johnson, President  
 John G. Dramm, Vice President  
 Arthur G. Stangel, Vice President  
 Ben F. Fronk, Treasurer  
 Mead F. Hansen, Secretary  
 Percy Brandt, Recording Secretary  
 Ralph Plumb, Historian  
 Frank Kloiber  
 E. S. Bedell  
 Louis Bruechert  
 Ray Wernecke  
 W. C. Randolph  
 Earl O. Vits  
 Miss Josephine Sieker  
 C. W. Meisnest  
 Fred Christiansen  
 Rev. D. C. Ristad  
 R. H. Markham

## Executive Committee

J. G. Johnson, General Chairman  
 John G. Dramm  
 Arthur G. Stangel  
 Frank Kloiber  
 Percy Brandt  
 Ben F. Fronk  
 W. C. Randolph  
 E. S. Bedell  
 Mead F. Hansen

## Finance Committee

L. J. McCambridge, Chairman  
 E. W. Mackey  
 Edwin Scholten  
 W. C. Randolph  
 Ray Wernecke  
 Louis Bruechert

## Centennial Parade Committee

John G. Dramm, Chairman  
 George Clark, Vice Chairman  
 Capt. John P. Klinkner, Marshall  
 George Tulach  
 Louis Bruechert  
 Earl Hough  
 R. C. Milski  
 J. J. Kuplic  
 Dr. L. D. Thompson  
 Frank Tomchek  
 Alois Fischl, Sr.  
 Fred H. Borchardt  
 F. C. Kunz  
 Michael Mrotek  
 W. C. Randolph

## Bank Committee

Delmer Hansen, Chairman  
 C. A. Randolph  
 Rufin Boyd  
 Oscar Engebrecht

## Church Committee

Rev. D. C. Ristad, Chairman  
 Rev. F. C. St. Clair  
 Rev. C. H. Phipps  
 Rev. L. H. Koeninger  
 Rev. W. H. Grace

## Special Police and Labor Committee

A. C. Seymour, Chairman  
 Ray Wernecke  
 Capt. Wm. Christiansen

## Concessions Committee

Chas. H. Tills, Chairman  
 Norman Johnson

## County and Town Float Committee

Fredinand Schneider, Chairman  
 F. A. Fredericks  
 Adolph Strouf

## Centennial Racing Program Committee

Dr. A. F. Rank, Chairman  
 Dr. E. A. Schuette, Supt. of Speed  
 J. Aubrey Egan  
 Wm. C. Herrmann  
 Fred Mahnke  
 Eugene Miller  
 Dr. A. J. Vits  
 Harry Streich  
 Harry Chandler  
 W. A. Williams

## Hobby Show Committee

Andrew Houston, Chairman  
 Percy Brandt  
 John Egan  
 Robert Lindwall  
 Arnold Croll  
 Rev. F. C. St. Clair  
 Rev. August Dusold

## Fourth of July Fireworks Committee

George Rank, Chairman  
 Major Edward Schmidt  
 Alfred Nelson

## Marine Day Committee

Commander Hans Ertz, Chairman  
 Wm. Beauvais  
 Alfred Nelson  
 R. A. Guttman  
 Henry Schuette  
 Archie Rankin  
 Ray Myers  
 Roy Vollendorf  
 Alton Rassmussen

## Booster Club Committee

E. J. Wendorf, Chairman  
 Paul Schuette, Jr., Co.-Chairman  
 Edw. M. Benishek  
 Walter J. Clark  
 Pat Dewane  
 Kenneth Healy  
 James Kahlenberg  
 Jerome Ledvina  
 George Maxfeldt  
 Alfred Nelson  
 Paul Oberland  
 A. J. Peters  
 Walter E. Peters  
 Henry Schuette, Jr.  
 Chas. Sutter  
 Les, Valleskey

Wm. T. Walling  
 E. W. Walthers  
 E. C. Jerzewsky  
 Mrs. Walter Bump  
 Mrs. J. E. Carey  
 Mrs. F. E. Dresser  
 Mrs. Roy Elfner  
 Miss Mabel Gunderson  
 Mrs. Nell Hannah  
 Miss Ruth Hansen  
 Miss Lola Hartwig  
 Miss Verna Huchthausen  
 Miss Elaine Joyce  
 Miss Lenore Kadow  
 Mrs. Francis Kennedy  
 Miss Grace Koutnik  
 Mrs. Mabel Lounsbury  
 Mrs. R. B. Prinz  
 Mrs. R. A. Ritchie  
 Miss Irma Schmitz  
 Miss Etta Sonsthagen  
 Miss Betty Torrison  
 Mrs. Wm. T. Walling  
 Mrs. Chas. Zeman

## Publicity and Advertising Committee

J. G. Johnson, Chairman  
 Francis M. Kadow  
 John Reddin  
 Wm. F. Ohde  
 Mark Beyers  
 C. A. Brandt  
 H. H. Martin  
 Rudie Ginzel  
 Mead F. Hansen  
 Mayor Adolph Hingiss  
 E. G. Phipps  
 Wayne Lemmon  
 A. J. Kumbalek  
 Dr. W. J. Morrisey

## Platform Entertainment Committee

Frank Hrabik, Chairman  
 Chester Plantico  
 B. Nespor

## Conservation Exhibit

(Sponsor—Manitowoc County Fish & Game Ass'n.)  
 Hugo Drumm, Chairman  
 George C. Peterson  
 Wenzel Koutnik  
 E. B. Theisen  
 Arthur Holst  
 John Waskow, Jr.  
 Wm. Ballard  
 Louis Heinrichs  
 G. S. Rand  
 Walter Houghton  
 Jerry Krejcie  
 Edward Plautz  
 Thor. Wallen  
 Clarence Kelm  
 George Krieser  
 Chas. Ludwig

Theo. Fricke  
 Sam Conradt  
 Walter Abel  
 John Peterik, Sr.  
 Clarence White  
 Milton Green

## First Aid & Safety Project

(Sponsor—United Commercial Travelers of America)  
 Edward F. Ziesler, Chairman  
 I. D. Wood  
 A. E. Kerschler

## Historical and Antique Window Displays and Contests

(Sponsor—Business and Professional Women's Club)  
 Miss Clara Prochazka, Chairman  
 Miss Elsa Dramm  
 Miss Frieda Newman  
 Miss Clara Nelesen  
 Miss Anita Frazier  
 Mrs. Jos. Multerer, Jr.  
 Miss Loretta LeClair  
 Miss Helen Neuenberger

## County Cooperation Committee

George Kiel, Chairman  
 N. T. Nelson  
 Otto Wiegand  
 John Wanek  
 Ambrose L. Eberle  
 Adolph Strouf  
 Herman C. Tills  
 Adolph Otto  
 Louis Medaus  
 Louis Bleser  
 Fred A. Fredrich  
 Ferdinand Schneider  
 Anton Skubal  
 Edwin Roepke  
 L. T. Voigt  
 O. C. Heidemann  
 Werner Schmooch  
 Emil Guetschow  
 W. H. Johnson  
 E. W. Tamm  
 W. A. Martin  
 A. F. Rank  
 Charles L. Kunz  
 Charles A. Drumm  
 Edw. Dusold  
 Jos. Kapitz  
 Frank Pilger  
 John F. Kaufmann  
 Everett LaFond  
 Wm. B. Mertens  
 John Reis  
 Adam Klein  
 John Gesell  
 Joseph Arle  
 William Otis  
 Earl Reichert  
 Robert Wildgrube, Jr.  
 Alex La Fleur

**Centennial Sales Day**

(Sponsor—Merchants' and  
Manufacturers' Ass'n.)  
L. J. Wagner, Chairman  
Hugh Conine  
Warren Hamill  
Paul Schuette  
F. J. McDonough  
Frank Vander Zanden  
Alex Sinclair  
W. C. Huchthausen

**Commemoration Service (Held May 6th)**

(Sponsor—D. A. R.)  
Mrs. Earle Tower, Chairman  
Mrs. R. H. Markham  
Mrs. J. G. Johnson  
Miss Clara Bressler

**Old Settlers Banquet**

(Sponsor—Rotary Club)  
T. E. McCormick, Chairman  
Wm. J. O'Donnell  
Oscar A. Richter  
L. H. Vetting

**Veteran Teachers' Banquet**

(Sponsor—Kiwanis Club)  
Edw. Walthers, Chairman  
Howard Dummer  
Chas. L. Buerstatte

**Centennial Booster Tour**

(Sponsor—Guy Drews Post American  
Legion)

**Centennial Wrestling Show**

(Sponsor—Guy Drews Post American  
Legion)

**Amateur Hour Show**

(Sponsor—Lions Club)  
James G. Magill, Chairman  
Melv F. Kitzerow  
Junias H. Pleuss  
Earl Hough  
Alois Fischl, Sr.

**Superintendent of Buildings & Grounds**

Ruppert Boucher

**General Pageant Chairman**

Thomas Kadow

**Talent Committee**

Mrs. Vina Stupecky  
Miss Martha Webb  
Miss Verna Huchthausen  
Mrs. Janet Spindler Bump  
Syd Hermann  
Miss Rona Schmitz  
Dr. E. M. Kapitan  
Major Edward Schmidt  
Capt. J. P. Klunkner  
Miss Lenore Kadow  
Mrs. A. W. Storms  
Miss Ruth Ritchie  
E. G. Phipps  
Roland Gass  
Miss Eunice Pollock  
Robert Brown  
Charles Lueth

**Historical Committee**

Ralph G. Plumb, Chairman

**Court of Honor Contest Committee**

Francis M. Kadow, co-chairman  
Mrs. Lester Schuette, co-chairman  
Miss Ruth Stewart

**Cash Ticket Committee**

Mrs. Frank Tomchek, Chairman  
Mrs. Harned Day  
Mrs. Walter Biesmeyer  
Mrs. Edgar Hanson  
Mrs. Alfred Pingel  
Mrs. Earl Crocker

**Grounds Committee**

Roy Vollendorf, Chairman  
Wm. Fitzgerald  
O. L. Anderson  
Walter Koepke  
Ed Karl

**Arrangements**

Stanley Ladwig, Chairman

**Wooden Money Committee**

Wm. C. Herrmann, Chairman  
A. J. Kumbalek  
Francis Kietl

**Construction Committee**

Eldred J. Herrmann, Chairman  
Conrad Hamann  
Dr. R. G. Strong  
A. C. Seymour

**Stage Committee**

Wm. Fitzgerald, Chairman  
George Hrabik  
John Kennedy  
Reuben Hartl  
Ray Thielen

**Sponsors and Chaperones**

Mrs. R. A. Ritchie, Chairman  
Mrs. Harry Kelley  
Mrs. Gertrude Machia  
Mrs. Arthur Meister  
Mrs. Thomas Reddin  
Mrs. Jerry Stangel  
Mrs. Harry Mallon  
Mrs. E. P. Dicke  
Mrs. H. Jungman  
Mrs. J. J. Pekarske  
Mrs. E. E. Wenddorf  
Miss E. I. Torrison  
Mrs. Esther Schmidt  
Mrs. Milton Boucher  
Miss Lenore Kadow  
Mrs. John Kadow, Jr.  
Mrs. T. G. Johnson  
Mrs. E. H. Stewart  
Mrs. A. A. Cozey  
Mrs. W. T. Walling  
Mrs. W. W. Just  
Mrs. Elizabeth McCulley  
Mrs. M. H. Murphy  
Miss Julia Kelley  
Mrs. John Healy

**Choir Committee**

Mrs. Erma Kluth, co-chairman  
Franklin Kotick, co-chairman

**Property Committee**

Harry Richardson, Chairman  
Raleigh Sorge Paul Fischl  
Jack Carey Mrs. Charles Reddin  
Jack Fleming Paul Fischl  
Rod Nowokoski A. J. Gallagher  
Earl Vits H. J. Mallon  
Alfred Nelson Paul Rahr  
Charles Bouril Ed. Wenddorf  
Fred Guse Kenwood Egan  
Harvey Stangel Joe Peterson  
Joe Schroeder

**Mass Collection of Activities Display**

(Sponsor—Department of Recreation)  
L. W. Robertson, Director & Chairman  
Miss Agnes Brady  
Miss Ada Bouril  
Miss Ludmilla Geiger  
Edward Duzeski  
Marshall Schroeder  
Sydney Herman  
Norman Olson  
Albert Lutz  
Lester Mangin  
Vernon Brennan

**Street Decoration Committee**

Leo Brandt, Chairman  
R. C. Milski  
Herbert Dow  
J. J. Kuplic

**Speakers' Committee**

Judge Albert H. Schmidt, Chairman

**Traffic and Safety Committee**

Stanley Peterson, Chairman  
George Tulach  
J. J. Kuplic

**Centennial Parade Judges**

Frank Hoffman, Chairman  
Judge E. S. Schmitz  
Judge O. T. Bredesen

**Kiddies Parade**

(Sponsor—Otto Oas Post Veterans of  
Foreign Wars)  
Norman Berkedal, Chairman  
Dr. R. S. Lutz Bernard Berkedal  
Arvin Kuester Jos. H. Radlinger  
Eugene Kreiser A. A. Brandt  
Jos. J. Coutney Henry Witte

**Committee for Industrial Exposition**

Junior Chamber of Commerce

**Executive Committee**

Rolf Ristad  
L. J. Valleskey  
A. Fischl, Jr.  
Frederick Raeuber  
Philip Eckels

**Publicity**

A. Uek, Chairman  
Ralph Paddock  
Clyde Christianson  
Allan Ohde

**Old Industries**

Rolf Ristad, Chairman  
Bob Ellib  
Emil Benishel  
Carl Wallschlaeger  
Paul Oberland  
Lloyd Johnson  
Fred Schuler

**Decoration Committee**

Frederick Raeuber, Chairman  
Jim Spindler  
Jack P. Nash  
Harlan Ott  
Arnie Schlei  
Ralph Paddock

**New Industries**

L. J. Valleskey, Chairman  
Norman E. Risjord  
Bernard Balkansky  
Jack Barenbaum  
Archie Budzien  
Clyde Christianson  
Howard Duebner  
Ray Knutson  
Lester Wuellner

**Supervision Committee**

A. Fischl, Chairman  
Frank Tadych  
Harold McCully  
Ray Shebesta  
Howard Duebner

**Entertainment**

Philip Eckles, Chairman  
Paul Rahr  
Henry Brezinsky  
William G. Artis

**Treasure Hunt & Prize Committee**

Bob Wegman, Chairman  
Bob Lindwall  
William Artis  
Charles Kelley  
Rubert Nelesen  
Ray Myers

**Gate & Grandstand Admission Committee**

C. W. Meisnest, Chairman  
Ben F. Fronk  
Frank Meisnest  
And Forty Ticket Sellers and Takers

**Red Cross Nurses in Charge of First-Aid Service**

Miss Freda Newman, City Nurse, Chair.  
Miss Selma Johnson, County Nurse  
Miss Gertrude Conover, School Nurse  
Miss Frieda Breaker, Maple Crest  
Sanatorium  
Miss Estelle Jung, Health Center  
Miss Alvina Neinstedt, Metropolitan  
Insurance Co. Nurse  
Miss Helen Barrett, City Nurse of Two  
Rivers

**Grounds & Buildings Committee**

Roy Vollendorf, Chairman  
Edw. C. Berkedal  
Walter C. Staeffler  
Ruppert Boucher

# OFFICIAL PROGRAM

## **Sunday—June 21st**

Centennial Church Services in all Churches  
Centennial Booster Tour  
Sponsor—Guy Drews Post American Legion

## **Sunday—June 28th (Fairgrounds)**

12:00 Noon—Gates Open  
12:00 Noon—Kaarup Rides and Concessions Open  
12:00 Noon—Indian Show Opens  
1:00 P.M.—Conservation Exhibit Opens  
Sponsor—Manitowoc County Fish & Game Ass'n.  
1:00 P.M.—Hobby Show Opens  
1:00 P.M.—Doll Show Opens  
Sponsor—Recreational Department  
1:00 P.M.—First Aid and Safety Project Opens  
Sponsor—United Commercial Travelers Ass'n. with Manitowoc County Chapter American Red Cross Cooperating  
1:00 P.M.—Model Playgrounds Opens  
Sponsor—Recreation Department  
1:00 P.M.—Handcraft Exhibit Opens  
Sponsor—Boy Scouts—Recreation Dept.  
1:30 P.M.—Official Opening Ceremonies  
1:30 P.M.—Concert—Manitowoc Marine Band  
2:00 P.M.—Harness Racing Program  
Three Harness Races—Six Acts Vaudville  
4:00 P.M.—Outdoor Church Services—High School Bowl

## **Monday—June 29th (Fairgrounds)**

1:00 P.M.—Gates Open  
1:00 P.M.—Rides—Concessions—Exhibits  
2:00 P.M.—Concert—W.P.A. Symphony Orchestra  
6:15 P.M.—Old Settlers Banquet—Hotel Manitowoc  
Sponsor—Rotary Club  
8:15 P.M.—Outdoor Wrestling Show  
Sponsor—Guy Drews Post American Legion  
Music by American Legion Band  
Historical and Antique Window Display in Downtown Stores  
All Week. Sponsor—Business & Professional Women's Club

## **Tuesday—June 30th (Fairgrounds)**

1:00 P.M.—Gates Open  
1:00 P.M.—Rides—Concessions—Exhibits—Shows Open  
1:30 P.M.—Concert—Lincoln High School Band  
2:00 P.M.—Massed Activities Program  
Sponsor—Recreation Department  
6:00 P.M.—Veteran Teachers' Banquet—Catholic Community Center. Sponsor—Kiwanis Club  
8:00 P.M.—Washington Park Dedication—Washington Park  
Sponsor—City of Manitowoc

## **Wednesday—July 1st (Fairgrounds)**

1:00 P.M.—Gates Open  
1:00 P.M.—Exhibits—Rides—Shows—Concessions Open  
3:00 P.M.—Industrial Exposition Opens  
Sponsor—Manitowoc Junior Chamber of Commerce  
8:00 P.M.—Coronation Ceremonies  
Crowning of Miss Manitowoc, Miss Columbia and eight Princess attendants  
8:15 P.M.—Historical Pageant

## **Thursday—July 2nd**

All Day—Centennial Sales Day—Manitowoc Stores  
Sponsor—Merchants' & Manufacturers' Assn.  
1:00 P.M.—Gates Open  
1:00 P.M.—Rides—Exhibits—Shows—Concessions Open  
8:15 P.M.—Historical Pageant

## **Friday—July 3rd (Fairgrounds)**

1:00 P.M.—Gates Open  
1:00 P.M.—Rides—Exhibits—Shows—Concessions Open  
8:15 P.M.—Historical Pageant  
2:00 P.M.—Concert—Lincoln High School Band—Court House  
4:30 P.M.—Kiddies Parade—A thousand boys and girls in costume led by the Sons of Legion and Lincoln High School Bands.  
Over downtown streets to Washington Park

## **Saturday—July 4th (Fairgrounds)**

1:00 P.M.—Gates Open  
1:00 P.M.—Exhibits—Rides—Shows—Concessions Open  
1:30 P.M.—Historical Parade (From 17th and Washington Streets to Fairgrounds)  
Parade Bands are: Manitowoc Marine Band, Manitowoc City Band, Kiel Municipal Band, Mishicot Community Band, Lincoln High School Band, Vocational Band, Sons of Legion Band, American Legion Band and also hundreds of floats and marching units.  
3:00 P.M.—Amateur Contest  
Sponsor—Lions Club  
8:15 P.M.—Historical Pageant  
10:00 P.M.—Fireworks Display

## **Sunday—July 5th—Marine Day**

10:00 A.M.—Fisherman's Races (From Two Rivers to Manitowoc)  
Three races (Class A, B & C)  
1:30 P.M.—Outboard Motor Boat Races  
Eight Races—4 Professional—4 Amateur  
8:30 P.M.—Concert—Manitowoc Marine Band  
9:00 P.M.—Venetian Night Water Carnival

## **Grand Finale:**

10:00 P.M.—Fireworks Display and Burning of the hull of the Pere Marquette No. 6 off shore.  
Other events may be added to the program.  
Watch for daily announcements.



# *Synopsis of the Scenes of Manitowoc County Historical Pageant to be Presented at the Fair Grounds July 1-2-3-4*

An all local cast of over 550 people have been rehearsing for the past four weeks to present a colorful, entertaining and instructive pageant depicting the history of Manitowoc since its beginning. Music for the pageant will be furnished by the Manitowoc Marine Band and a large choir will supplement the band. The cast has been selected from people of Manitowoc County and are made up of all walks of life. The various episodes of the pageant are short scenes, striving to depict the various important incidents in the development of Manitowoc and surrounding territory.

## **Episode 1 Prologue**

This prologue introduces the "Court of Honor", "Miss Manitowoc", "Miss Columbia" and the eight princess attendants. An escort of thirty-four Boy Scouts usher in the "Court of Honor" at which time "Miss Manitowoc" gives her speech of welcome. This is followed by the entrance of the ladies representing the 48 states, at which time "Miss Columbia" steps forward and accepts for the 48 states the invitation and welcome of "Miss Manitowoc". Following this ceremony they are escorted by the scouts to the space reserved for them at the side of the pageant field where they witness the entire pageant as guests of honor. The ladies for the 48 states are members of the Germania Society.

## **Episode 2 Dance of Creation**

Here are shown the various elements of creation presented in dance form. They assemble themselves in their proper order and join together to show the coordination of the different elements of creation, Sky, Land, and Flowers, and how they are influenced by the creation to provide the development of these elements. This is a beautiful and colorful dance.

## **Episode 3 An Early Indian Camp**

Here is shown a short scene of early Indian camp life in which ceremony of the peace pipe, Indian dances and a recreational game takes place. Also shown in the Indian Scene is the arrival of Joliet and Father Marquette into this territory. Men of this scene are members of the St. Mary's Young Men's Club.

## **Episode 4 The First White Man's Arrival**

As the Indians were pushed back, white men began to gather in this territory pushing the frontiers further westward. In this scene is shown the various hardships of the first white men in preparing a home. Together with their hardships were certain pleasures which will also be shown. It was necessary for them to always be on the alert for Indian attacks and their life, because of this constant danger, was a hazardous one.

## **Episode 5 Dance of the Wilderness**

An attempt is made in this dance to bring to mind the various elements that had to be conquered by the early settlers in order to progress and develop this country. There were woods to clear, there was the climate with its long hard winters and the splendid growing temperatures, that had to be met with. There were the rains that had to be planned for. These elements are pictured as barriers which had to be conquered by the first white man in order to establish a home. This dance is very colorful and is a symbol of the obstructions that made the establishing of civilization very difficult.

## **Episode 6 Manitowoc's First Settler**

A man by the name of Benjamin Jones arrived in this territory in 1836 whereupon he left a small party on his land to commence its development and returned a year later to take up his residence here. While there had been white men in this territory before, Benjamin Jones was credited with being the first settler of Manitowoc County. The Indians by that time had become friendly and the few remaining made a treaty with Benjamin Jones that was agreeable to both parties. An attempt is made in this scene to show the first wedding which took place in Manitowoc. The principals of this wedding were: Miss Maria Smith was married to E. L. Abbott by the local justice of the peace, Benjamin Jones, on the site of the old Melendy home on the corner of what is now 7th and York Streets. Naturally a ceremony of this type was one that was celebrated throughout the entire town and many were on hand to take part in the festivities. The Virginia Reel was danced by the settlers at this celebration. All took part in wishing the newly married couple good luck.

## **Episode 7 The First School**

The first school in Manitowoc County was a far cry from the splendid educational system we have now. The teacher was a young man by the name of George Peek and the first school was at what is now the foot of 7th street. The rule "Spare the rod and spoil the child" was in force and while the school was small it was made to serve the purpose of early settlers for the first few years of their stay.

## **Episode 8 Pre-Civil War Days**

In 1848 the State of Wisconsin was admitted to the Union and there was great rejoicing because of this event as the little band of settlers felt that they had been included in the vast developing United States of America. In 1859 Carl Shurz, "Great American-born Patriot" addressed the citizens of Manitowoc from a hotel balcony, attacking slavery and main-

taining the "indissoluble character of the Union". It was a great event, for he was serenaded by the German Singing Society and acclaimed by the populace in a great day of celebration.

**Episode 9  
Civil War Days**

These were days of great sacrifices. Sacrifices of funds for the Civil War and sacrifices of young patriots for the cause of the North. Everyone felt their pressure. The opening of the scene portrays a dancing of the Quadrille which is broken into by the call of the bugle and the marching of soldiers who step forward and ask for volunteers for the army of the North. Mrs. G. B. Collins presented a flag, which still is on display in our library, to Captain Campbell Clark, and Mrs. Collins' original flag speech will be given in this scene.

**Episode 10  
The Book of Fame**

It is very difficult to limit the leading men of the past years who contributed to the development of Manitowoc. Among them, however, are the following men who stand out most prominently in the history of Manitowoc: George Reed, Edward Salamon, Osuld Torrison, John Schuette, Joseph Vilas, Henry Stolze, William Rahr, Sr., John Nagle, G. F. Rand, Thomas Walsh, Jacob Lueps, Henry Vits.

**Episode 11  
First Automobile**

Many were the skeptical comments when the first automobile made its appearance on the dusty streets of Manitowoc. "It won't work" and "It can't last" and "It will never take the place of the horse" were heard at all sides and when we look back over the last 25 years at these first automobiles, we really do wonder how they ever did last long enough to even make a 25 mile drive. We are fortunate in having in this scene several old automobiles that still run, which you will enjoy seeing.

**Episode 12  
World War**

The local company, Company E 127th Infantry, will show an advance as was carried out in No Man's Land during the World War. This sham battle will be very colorful and will call to mind vividly how so many of our boys made the supreme sacrifice for a noble cause.

**Episode 13  
Melting Pot of the Nations**

Descendants from various foreign countries contributed their families to the growth and development of Manitowoc County. England, Ireland, Italy, Germany, Poland, the Scandinavian countries, all had representatives in the early population. "The Melting Pot of the Nations" shows the various countries' folk dances, enacted by the girls costumed in the various colors and dresses of their fatherland. This scene is very colorful and is completed by the little U.S.A. girls doing a very interesting drill.

**Episode 14  
Finale**

In which the entire cast join in a short but beautiful assembly portraying the union of all these episodes into the formation of today's Manitowoc County.

**CAST OF CHARACTERS  
of  
THE MANITOWOC COUNTY CENTENNIAL PAGEANT  
to be presented at  
MANITOWOC COUNTY FAIRGROUNDS  
JULY 1, 2, 3, 4, 1936**

Rehearsed and Staged by Wayne Lemmon  
representing

JOHN B. ROGERS PRODUCING CO., Fostoria, Ohio  
Rehearsal Pianist, Mrs. Wayne Lemmon

Music by.....Manitowoc Marine Band, Emil Sohrweide, Dir.  
Choir Directed by.....Mrs. O. C. Kluth, Mr. Franklin Kotick  
Narrator.....Robert Hansen  
Narrator for Mrs. Collins' Flag Speech.....Lola French

**NOTICE**

While every possible effort has been made to leave no cast members' names out of the program, the committee takes no responsibility for any unavoidable omissions or errors in spelling.

**Episode I**

**COURT OF HONOR**

The titles of "Miss Manitowoc" "Miss Columbia" and the Eight Princess Attendants are awarded to the first ten winners of the "Court of Honor Contest". The complete list of contestants is printed below.

Harriet Ladwig	Peg Mahnke	Edrie Lindemann
Dolly (Violet) Thompson	Ann Felde	Alice Cherney
Haskell Prickett	Neoma Fricke	Bernice Handl
Catherine Heffernan	Wilma Huntington	Mildred Boeckman
Loretta Crowe	Blanche Stupecky	Margaret Seekamp
Alice Stricker	Gladys Hermann	Evelyn Lowe
Elaine Christel	Charlotte Ann Richberg	

**BOY SCOUTS**

John Cisler	Edgar Fowler	Daniel Buretta	Leo Fricke
Melvin Shedivy	Harold Fargo	Robert Martin	Henry Woods
Alfred Greenwald	Leroy Zyamunt	Russell Franke	Elmer Zhoralski
Edward Kohl	Robert Wellhoefer	John Plank	Anthony Kumbalek
Wallace Gransee	John Klinkner	Guy Pfeifer	Donald Hendrick
Royalton Holzschuh	Marvin Lishka	Dick Kloiber	Leonard Zich
Harold Dorschner	William Waak	John Loef	Lester Zich
Joe Neillitz	William Koebke	Clarence Kazda	
Ramon Evenson	Alvin Osieczanek	Alvin Budnik	

**48 STATES**

Gladys Fricke	Marie Cichantek	Mrs. Ed Wilda	Mrs. Martha Lomprey
Irene Witzak	Mrs. Mary Kolar	Mrs. Anna Lambries	Mrs. V. R. Nicholson
Mrs. J. Lang	Lucilla Pierce	Mrs. E. Fricke	Mrs. Ada Hofslund
Ellen Burgett	Mrs. Mary Schuster	Mrs. Julius Stupecky	Mrs. Henry Bentley
Gertrude Machia	Mrs. Louis Rugowski	Mrs. Wm. Dobbert	Emma Weinert
Mrs. Arthur Meister	Mrs. Alden Dillon	Mrs. H. Kelly	Edith Rugowski
Mrs. John Jagodinski	Mrs. John Barbeau	Marjorie McKenna	Bernice Pierson
Mrs. B. Steffek	Susan Weinert	Mrs. Walter Bentley	Gladys Holtz
Mrs. L. Schmidt	Lenore Burgett	Mrs. Joe Kolbeck	Christine Tuesberg
Mrs. Matt Zingsheim	Mrs. F. Ferdon	Mrs. Ed Goeters	Louise Koebke
Ann Synek	Mrs. R. Herman	Mrs. Josephine Peronto	PAGES
Louise Boehem	Mrs. H. Budnik	Mrs. R. Drews	Charlotte Burger
Mrs. Emil Kummer	Evelyn Curtis	Mrs. Lucille Kazda	Shirley Burger

**Episode II  
CREATION BALLET**

Betty Allaer	Dorothy Drill	Virginia Mallon	Mary Weina
Ruth Reimer	Helen Rohan	Violet Opichka	Louise McKeough
Virginia Kraemer	Shirley Wilda	Leah Kinzel	Shirley Woerfel
Maysel Eckes	Sylvia Gaestel	Eilien Krohn	Rose Weitzman
Frances Hibbard	Christine Michalek	Caroline Stickert	Monica Reindel
Althea Auman	Elaine Reindel	Vivian Smugler	Dolores Michalek
Cleo Healy	Lucille McKeough	Jane Mueller	Delphine Lallensack
Loyola Crowe	Marann Mangin	Elizabeth O'Neil	

**Episode III**  
INDIAN SCENE

CHIEF Chestek Osesek	Marian Chaplesky Edwin Musial	WHITE MEN Anton Gospodarek Alois Kowalski Ed Novak Max Mrotek Edwin Budnik	Helen Esch Mildred Eisenmann Irene Popp Mildred Melville Shirley Dicke
BRAVES Leo Novak Vic Tadych Chestek Novak Mike Gospodarek Andrew Ziarnik Albert Rugowski Jos. Tadych	FATHER MARQUETTE F. R. Budnik LOUIS JOLIET Anthony Musial	SQUAWS Astrid Aarhus Ethel Luebke Bernice Hanson	CHILDREN Gene Marie Harsch Mona L. Marsch and Others

**Episode IV**  
OLD SETTLERS

Mrs. and Mrs. Tom Brennan Mr. and Mrs. Robert Kasbaum Mr. and Mrs. Charles Prochow Mr. and Mrs. Anton Kolbeck Mr. and Mrs. Edwin Kasbaum	Mr. and Mrs. George Tuschel Mr. and Mrs. Frank Tuschel Mr. Frank Remeker Mrs. John Lensmeyer and Old Settler Children	Charlotte Lensmeyer Felix and Leon Kasbaum Robert Kohlbeck Leroy Fogeltanz
--	---	---

**Episode V**  
WILDERNESS BALLET

FOREST Carmen Duebner June Wenddorf Gredrun Grotbeck Ina Schroeder Angeline Huntington Cecelia Scherer Dorothy Wenddorf	Rose Mary Morris Florence Hamachek MIST Vivian Engel Fern Satterburg Eve Bohnert Doris Kiekhoefter Dorothy Steffen	Einore Graczyk Mildred Fehring Althea Fehring SOLOIST Miss Cleo Healy RIVERS Ruth Luebke Janet Eberhardt	Hildegard Riederer Winifred Kouter Jeanette Orth Florence Strausky Lois Notz Marcella Ludwig
--	---	---	---

**Episode VI**  
FIRST SETTLERS SCENE

BENJAMIN JONES Justice of Peace Francis X. Murphy BRIDE Dolores Kelsey GROOM Fredrick Guse	CARL SCHURTZ Ray Fay OLD SETTLERS from Episode IV ORCHESTRA L. M. Pankratz' Old Time Fiddlers	CALLER Tom Brennan FIDDLERS L. M. Pankratz Chester Ryen Jene Barbier Donald Pankratz Sven Ellestad
--	---	---

**Episode VII**  
FIRST SCHOOL SCENE

TEACHER Clarence Rottmann CHILDREN	Geraldine Watchorn Carol Mae Gehrke Marilyn Gehrke	Helen Mae Lambert Tom Lambert Donald Watchorn	Peter Gehrke Carol White
--	--	---	-----------------------------

**Episode VIII**  
STATE'S ADMISSION TO UNION

CARL SCHURTZ, Ray Fay OLD SETTLERS of Episode IV, & OLD FASHIONED COUPLES Priscilla Moore Genevieve Clark	Annella Hoffman Ellen Crowe Elaine Zankle Florence Egan BOYS Miller Worth	Willard Anderson William Doeke Charles Zeimer John Gretz Earl Clark
---	--	---

**Episode IX**  
CIVIL WAR ARMY

CAPTAIN Jack Short SOLDIERS Lorin Haver Harland Haver Eugene Haver Johnny Gilhausen	Erwin Ploederl Jack Khron OLD FASHIONED COUPLES OF SCENE VIII. MRS. G. B. COLLINS Mrs. Nellie Cary	LADIES Mrs. Flora Lawrence Mrs. Louise McClure Mrs. Ernest Blair PRESIDENT BENNETT William Tisler
---	---	--

**Episode X**  
BOOK OF FAME

BENJAMIN JONES F. X. Murphy GEORGE REED H. J. Botler EDWARD SALOMON W. F. Pflueger	JOHN SCHUETTE Dr. E. N. Kapitan OSULD TORRISON Bill Muth Mr. G. S. RAND Paul Schuette, Jr.	WM. RAHR, SR. Veeman Barnett HENRY STOLZE, JR. H. D. Whitcomb JACOB LUEPS Dr. Zimmer	HENRY VITS Ed Kellner JOHN NAGLE Edson Andrews THOMAS WALSH I. E. Dalton JOSEPH VILAS Rex John
---	---	---	---

**Episode XI**  
TOURING BACK IN 1901

Bicycle Rider—Leonard McKenna  
5 Touring Couples and Others

**Episode XII**  
NATIONAL GUARDS—SHAM BATTLE

PEACE Marion Hannah CAPTAIN Klinkner, John P. FIRST LIEUTENANT Titera, Ladimir V. SECOND LIEUTENANT Khalil, Emil FIRST SERGEANT Lawrence, Archer L. SERGEANTS Drumm, Roland H. Fox, Bruno Q. Khalil, Anton H. Konieczka, John A. Konopacki, Hubert J. Kotick, Frank Olson, Walter L. Vogel, Albert L.	CORPORALS Buchner, Joseph H. Hofslund, Eugene R. Jirikovic, Edward J. Schulz, Melvin G. Schumen, Arthur C. Strzyzewski, Harry P. PRIVATES FIRST CLASS Bashaw, Marvin K. Dubey, Stuard D. Green, Clarence R. Hebert, Henry J. Hornes, Ernest Konopacki, Edward L. Kuehn, Raymond R. Peronto, Fred Robinson, Arthur R. Strzyzewski, Ervin J.	Teske, Donald H. Wernecke, Karl B. Wilker, Ervin J. Wiltgen, Chester J. PRIVATES Andrusak, William Baum, Ervin E. Berger, Glenn P. Dubey, Ervin E. Ebenhoe, Thomas W. Emond, David A. Erdmann, Lyle J. Glihsman, Ruben R. Gretz, Edwin F. Hendrick, Earl A. Herman, John B. Jacoboski, Urban A. Khalil, Charles R. Kopetsky, Jerry J.	Kraemer, Leo F. Labinsky, Andrew A. Meyer, Howard G. Neidl, Norbert W. Nemec, James B. Novak, Paul T. Ording, Elmer J. Piefer, William J. Raduenz, Lester E. Rohrer, Sylvester W. Rosinsky, Miles N. Schmidt, Frederick R. Stuckmann, Albert H. Tech, Harold W. Trost, Leonard M. Vavrunek, Thomas J. Wagner, Frederick J. Walters, Victor R. Ziarnik, Alvin F.
---	---	---	---

**Episode XIII**  
MELTING POT OF THE NATIONS  
SAILOR GIRLS

Jane Wellhoefer Gladyce Hessel Pauline Huntington Omelda Niemer	Rita Hammer Clara Gagner Pauline Huntington Erna Ludwig	Catherine Peterson Beatrice Jagemann Adelaide Kellner Rosemary Crowe	Josephine Schweigl Mickey Sebo Evelyn Michels Wilma Huntington
--	--	---	---

ENGLISH GIRLS

Beatrice Loritz  
Lucille O'Neil  
Caroline Uelchek  
Mary Claire Barnes

POLISH GIRLS

Lenore John Shirley Bentley Betty Turek	Lorraine Rice Florence Van Zon Ruth Krejcarek	Mary Louise Kautsky Marion Shaw Eloise Arndt
---	---	--

ITALIAN GIRLS

Mary Pritchard Gladys Pech	Helen Hovi Dotte Scheuer	Dorothy Cyganick Mercedes Boucher
-------------------------------	-----------------------------	--------------------------------------

GERMAN GIRLS

Viola Hein Ruth Weise Betty Zabler	Geraldine Witte Gladys Jentsch Janet Plank	Mariorie Borkurd Kathleen Johnson Thelma Chadek	Evelyn Lowe June Brandt Millicent Sweet
--	--	---	---

IRISH GIRLS

Helen Zmeskal Margaret Prue	Marion Heide Virginia Satterburg	Bernice Hansen Caroline Sporer
--------------------------------	-------------------------------------	-----------------------------------

SCANDINAVIAN GIRLS

Dorothy Brennan Dorothy Pankratz Florence Pankratz	Ruby Glasow Ann Salutz Harriet Torrison	Luella Alfson Ruth Glasow Beatrice Brennan	Alice Mae Ellestad Elaine Christel Leone Hanson
--	---	--	---

U. S. A. GIRLS

Jean Stockinger Caroline Rohrer Nora Mangin Mary Ann Barbeau Betty Wettenkamp Jean Mangin	Betty Brilliant Mary Ellen Zingsheim Marie Loef Barbara Ann Mrotek Mary Fitzgerald Marion Erdman	Margaret Schlei Jean Namz Margaret Riederer Rose Mary Schuk Maxine Barbeau Eunice Rappel	Rita Champagne Josephine Blashka Betty Cox Helen Buchner Joan Gebhard Helen Mae Poklinkowski Dorothy Cox
--	---	---	--

**Episode IV** GRAND FINALE

# MANITOWOC = "The City of Opportunity"

## THE HISTORY OF MANITOWOC'S LEADING INDUSTRIES

### ALUMINUM GOODS MANUFACTURING COMPANY

People often ask: "Where does Aluminum come from? Who discovered it?" Aluminum comes from clay and is found in practically every community. The largest deposits in the U. S. are found in Arkansas.

Aluminum was first discovered in 1827 by a German chemist, Frederick Woehler; however his method of extracting the metal from the clay was very slow and costly.

In 1886 an American school boy, Charles Hall, discovered a practical method to extract this metal from the clay by a chemical and electrical process. Hall's method, used to-day, was the real turning point in the history of Aluminum and made it possible for commercial purposes.

Aluminum up to 1898 had been commercially possible for less than a decade. It was still a novelty metal, being produced on a small scale and used only for the manufacture of novelties — combs — thimbles — match safes and other souvenir goods.

Shortly before the year 1898 vast deposits of Aluminum were discovered in Georgia and Arkansas. Refining was started on a large scale immediately after, resulting in aluminum being placed on the market at a price satisfactory for commercial purposes.

The Aluminum Goods Manufacturing Company was founded in 1898 by the late Henry Vits, in a little one room shop on So. 15th Street. This company began business with the manufacturing of combs and novelties.

During the few years following the placing of aluminum on the market at commercial prices the declining market for novelties of aluminum caused this little group of men many hardships. However, they bravely struggled ahead. New blood was added and with this increased capital it was decided to go into the kitchen utensil field.

The aluminum cooking utensils manufactured found a ready market. The integrity of the company, its honest policy, towards its customers and employees were also factors that helped its growth.

Compare the present plants with the one room shop of a decade ago. Today the company has large plants in Two Rivers and Manitowoc and the output from these plants makes Manitowoc the aluminum center of the world.

The big output of this company is still its fine line of cooking utensils of which "Mirro" The Finest Aluminum" heads the list. Many brands made up under the names of prominent manufacturers and jobbers, also "Viko The Popular Aluminum" are others.

Besides its output of cooking utensils the company manufactures automobile parts of every description — radio parts — ice cube trays — cosmetic boxes — tubes — screwcaps for bottles — high chair trays — thermos bottle parts — washing machine covers — and various other contract merchandise, including novelties printed and plain.

The Aluminum Goods is represented in every state in the union by competent salesmen and in all principle foreign countries by their export jobbers, especially Latin America, Australia and the Orient.

In addition to the General Office at Manitowoc, Wis., Sales offices are maintained at New York, Chicago, Detroit, and San Francisco.

### MANITOWOC SHIPBUILDING CORPORATION and Manitowoc Engineering Works

Because of Manitowoc's excellent harbor and its natural facilities together with the fact that its river is navigable for a considerable distance up stream, shipbuilding and Manitowoc have become traditional. For almost a century ship-building has been the vocation of many of its citizens.

Shipbuilding operations began in the year 1847. At that time, the principal building was small wooden sailing vessels and wooden fishing sloops for use on the Great Lakes.

From the first day of operation the local plant has gradually grown, adding steel equipment as required until it now has world wide recognition.

The Manitowoc Shipbuilding Corp. is now located on a peninsula formed by the Manitowoc river and covers a space of approximately 35 acres. Around this peninsula you will find 4800 feet of navigable dock frontage. Immediately opposite the yards is a large turning basin allowing the largest lake craft to turn about with ease.

A large steel floating dry-dock owned by the corporation will accommodate the largest lake vessel for repairs.

In addition to repairing boats the company designs and builds car-ferries, oil tankers, passenger and freight vessels, self-unloaders, large steel private yachts, barges, fire-boats, tugs, light scows, dredges, speed cranes, marine boilers and engines. A part of the organization being the Manitowoc Marine Boiler Works located on Quay Street and covering better than two full city blocks.

In addition to the shipbuilding business it carries on work thru a department known as the Manitowoc Boiler Works, manufacturing heating boilers. The Manitowoc Engineering Works manufactures speed cranes and other machinery incidental to the engineering industry.

## MANITOWOC INDUSTRY — Con't.

During the late war the shipyards was under the direct supervision of the United States Navy and built many ships that saw actual service during the war. Recently they were awarded 3 of the 9 boats purchased by the Navy in their new development program. These three boats were launched at 11 A. M. on the morning of June 30, 1934.

The Manitowoc Shipbuilding Corporation is proud of the reputation they have and shall always strive to maintain this. We too, as citizens, are proud that Manitowoc has continued to be their home during all these years.

### MANITOWOC BOILER WORKS

The Manitowoc Boiler Works was founded in 1891 and operated independently for a number of years. In 1908 it was taken over by the Shipbuilding Corporation and is at present a part of that organization.

This plant, located on Quay Street near the entrance to Manitowoc's harbor is ideally situated for the manufacturing of Marine Boilers. As part of the Manitowoc Shipbuilding Corporation all boilers and parts necessary for operation are made and installed in each boat turned out by the yards. A large frontage along the river with the river dredged to sufficient depth to permit docking of the unfinished craft enables this company to install their boiler equipment with ease.

After the boiler is completed within the boiler works, a large trolley crane, electrically driven, picks up the finished object and transports it to the boat along the dock. It is gently lowered and fastened in place together with its fittings by skilled men with years of experience at this work.

Besides Marine Boilers and fittings, boilers for industrial firms to conform with specifications by the purchaser are completed and shipped via flat car to various parts of the United States.

This company, like the shipyards, was operated by the government during the World War.

### RAHR MALTING COMPANY

This business was established in 1847 by William Rahr, one of the pioneers of the Middle West and has had phenomenal growth.

William Rahr, its founder, died in 1880.

The annual malt output of its plant at that time was 400,000 bushels. With the completion of its present building program on August 15, the Rahr Malting Co. will be in a position to produce annually 11,000,000 bushels of malt.

Its plants in Minnesota and at Manitowoc, Wis., have a grain and malt storage capacity of 6,500,000 bushels.

At Manitowoc, Wis., in addition to two artesian wells, the company, in 1935, completed a water supply system consisting of a 24" pipe line extending 4,000 feet into Lake Michigan with an electrically operated pumping station. This is in addition to a 12" pipe line extending 3,200 ft. into Lake Michigan, installed about 20 years ago.

Its plant, bounded by Washington, 6th, 7th and Jay Streets in the City of Manitowoc, is recognized as the largest, most efficient, modern single malting plant in the world.

The company manufactures malt from Barley, Wheat and Rye for brewers, distillers, flour millers, yeast, vinegar, malt syrup, malt extract, malted milk and breakfast food manufacturers of the United States and foreign countries. "RAHR PALE AND ROASTED MALTS" for every purpose are well and favorably known throughout the world!

In connection with its manufacturing operations, the company has extensive research and experimental laboratories.

The following are the executives of the Rahr Malting Co.: President and Treasurer, Guido R. Rahr; Vice President and General Manager, Frank A. Miller; Secretary, A. L. Nash.

### NATIONAL TINSEL MANUFACTURING CO.

A unique industry and the largest of its kind anywhere, is the National Tinsel Co., located at Sixteenth and Hamilton Streets.

The National Tinsel Mfg. Co. are manufacturers of Christmas Tree ornaments of every description, including tinsel trimmings, metallic decorative ornaments, angel hair (better known as icicles) and many other tree novelties. The Christmas Tree ornament line is not new to Manitowoc. Articles of this kind have been made here for the past fifty years and are known all over the face of the globe.

This plant as it is now, with its ideal working conditions — neat surroundings — building and equipment is the most modern of its type and one of which Manitowoc is happy to have among its prominent industries.

To help reach all markets and to enable the company to compete with other manufacturers this company recently established branch plants in New York City and San Francisco.

The combined efforts of these three plants supplies the majority of Christmas tree ornaments on the market today.

### WHITE HOUSE MILK COMPANY

The White House Milk Co. is a subsidiary of the Great Atlantic and Pacific Tea Company, operating their plant here at Manitowoc.

This plant has a greater production than any other plant of its kind in the world. The canned milk produced here is sold to the consumer in all A & P Stores, under the name White House Brand, Evaporated Milk. A larger quantity of this brand is consumed by the public than any other individual brand on the market.

The raw material and processing of this brand of milk is supervised by expert milk chemists and operators, guaranteeing the public as good, if not better quality of evaporated milk than is sold under any other brand.

**A. M. RICHTER SONS COMPANY**

A. M. Richter Sons Co., was established in 1875 by the late August M. Richter and his two sons, on South Seventh Street. At first this company engaged in the manufacture of white vinegar only, buying the alcohol from which it was made from wholesale druggists. After a year or two, however, they added the manufacture of compressed yeast and made alcohol as a by-product. The alcohol being then converted into vinegar.

In 1922, the manufacture of cider vinegar was added and a plant built on a new site, about six blocks south of their old plant. This new plant has since developed into one of considerable size and importance.

Vinegar as manufactured by Richter is sold in quantities varying from pint bottles to tank cars. A fleet of tank cars was purchased with which to transport the vinegar in larger quantities to distant points. Each car holds more than 8000 gallons of vinegar, which, when diluted to proper strength for table use, would make approximately three times that amount.

Richter products are well known and popularly received wherever displayed. The reason being that the method of manufacture combined with the kinds of raw material used, make them the best that you can purchase.

Only Corn, Rye and Barley Malt are used in the manufacture of yeast and white vinegar. White Cider Vinegar is made exclusively from the juice of fresh apples.

This company has been in business for about sixty years, manufacturing high quality products, and you may be sure they will continue in this direction.

**WISCONSIN PUBLIC SERVICE CORPORATION**

**Utility Service to Manitowoc County**

The Wisconsin Public Service Corporation supplies electricity throughout the greater portion of Manitowoc County. A network of approximately 550 miles of distribution line and 42 miles of transmission line, together with five substations, furnishes service to this large area. Gas for all domestic and industrial purposes is furnished in the City of Two Rivers, where a modern gas plant is maintained.

Approximately 11,000 HP is supplied to large industries in the cities of Manitowoc and Two Rivers. In the rural districts 28 smaller communities and many crossroad hamlets depend on the Company's system for their entire electrical requirements.

Approximately 1600 rural customers, most of them farmers, enjoy city electric service through the line extension policies of the Company which began as early as 1914. Manitowoc County ranks among the highest in the State in rural electrification.

The district office is located at Manitowoc with a branch office in Two Rivers. The Manitowoc County system is a portion of and inter-connected with the company's extensive system throughout the northeast section of Wisconsin. A large steam generating plant in Manitowoc is connected by high voltage transmission lines with three other steam plants and 15 hydro plants, thus insuring dependable and continuous service.

**WISCONSIN ALUMINUM FOUNDRY**

The Wisconsin Aluminum Foundry originated in the year 1910 under the name Manitowoc Brass Foundry. In 1930 the company reorganized, new capital was added and the name was changed to The Wisconsin Aluminum Foundry Company, Inc., as it appears today.

This company manufactures a varied line consisting of brass, aluminum, bronze and nickel alloys. During the years 1915 to 1925 inclusive, cast iron and semi-steel automobile castings were made. This department was discontinued in 1925.

For the last few years a high grade line of cast aluminum steam pressure cookers has been made under the trade name of "All American Cooker". These cookers are nationally known and have been readily accepted by the American public where ever placed on the market.

Special forgings are also cast at the request of various manufacturers throughout the surrounding states.

**WISCONSIN'S ONLY CEMENT PLANT**

The Manitowoc Portland Cement Company plant about a mile up river is ideally located, having over one thousand feet of dock frontage with the river dredged to a depth of twenty-one feet, permitting the largest steamers on the lake to dock and discharge cargoes of coal and stone for their use. This plant is one of the most modern in the country and produces annually over 5,200,000 sacks of "Badger State" Portland cement.

The clay used in the manufacture of the cement is mined about a mile from the plant. Here the clay is dumped into a wash mill, water added and then powerful machinery grinds this substance until a liquid is formed. A centrifugal pump then delivers this liquid to the plant a distance of 5300 ft. thru a 6" pipe.

Stone used at the plant is brought over from Michigan by boat and a large supply is kept on hand at all times. This is likewise true of their coal supply. The Manitowoc Portland Cement Co. can ship via either of the following railroads — The Chicago and Northwestern — Soo Line — Ann Arbor and Pere Marquette.

Manitowoc has the only cement plant in the state of Wisconsin.

**GROCERIES**

The Plumb and Nelson Company wholesale groceries and sell under their own label the well known Plu-Nel and Plumb Sure brands of canned goods. The Clover Farm Stores in Northeastern Wisconsin are also serviced by this concern.

**COPPER BOILER AND HEATER WORKS**

The Copper Boiler & Heater Works manufacture copper boilers and heaters for use in homes and industrial plants. The feature of this type of boiler is that they last a lifetime. Electric, coal and oil burning units are also manufactured by the company.

## MANITOWOC INDUSTRY — Con't.

This company produces one-fifth of all the canned milk produced in Wisconsin and approximately one-tenth of the evaporated milk produced nationally. Naturally this product makes Manitowoc the leading county in the state as well as in the nation.

When you next see White House Brand Evaporated Milk, think of MANITOWOC where it is produced.

### KINGSBURY BREWERIES COMPANY

Manufacturers of  
Kingsbury Pale — Kingsbury Ale

For over fifty years the Manitowoc plant of Kingsbury Breweries Company has been in continuous operation in the city of Manitowoc, manufacturing continuously high-grade cereal beverages and known nationally for its famous Kingsbury Pale.

The product of Kingsbury Breweries Company, whose label bears the address Manitowoc, Wisconsin, is sold throughout the country and has brought the name of the city to the forefront as the home of the famous Kingsbury Pale. The company takes pride in the fact that it uses exclusively locally manufactured malt from choice Wisconsin grown barley.

The company also owns two breweries in the city of Sheboygan formerly known as Gutsch Products Company and the Schreier Brewing Company.

### NORTHERN WISCONSIN PRODUCE COMPANY

The Northern Wisconsin Produce Co. is located at 1310 Clark St., adjacent to the Chicago & North Western depot. The Northern Wisconsin Produce Company is one of the most modern refrigerating plants in the Northwest today. Thousands of dozens of eggs produced in Wisconsin, on Wisconsin farms, are shipped from there, to this plant, where they are graded, properly candled and re-shipped all over the United States. Their principle market being the East and Chicago.

In addition to eggs, this firm also deals in Cheese and Butter under nationally known brands. The market for this covers many states.

### THE C. REISS COAL COMPANY

The C. Reiss Coal Co. operates an extensive coal dock right at the entrance to the Manitowoc harbor. Large, modern steamships, during the navigation season, bring in cargoes of industrial and household coal, some of them carrying as much as 12,000 to 15,000 tons.

The Reiss business of shipping high quality coal from Eastern Pennsylvania and West Virginia fields via the Great Lakes has developed to a point where they handle over a million tons of coal annually. The Manitowoc dock is equipped with what is known as a man-trolley bridge. A large steel clam shell type of bucket takes a seven ton bite at a time and unloads the coal steamboats at the rate of about 1000 tons an hour. The bridge is equipped with a complete screening plant, also reloading equipment for loading coal into railroad cars for shipment to inland points and the Northwest, also for the filling of the large hoppers from which local household and industrial deliveries are made by truck. The bridge, screening plant and bucket are operated completely by electricity.

The storage capacity of the Manitowoc dock is about 200,000 tons. Excellent

facilities are maintained for the fueling of steamers, tugs and other craft navigating the Great Lakes.

The type of coal handled is selected from the well known Pennsylvania, West Virginia and Eastern Kentucky coal fields. Before the coal is loaded at lower lake ports it is carefully examined physically and chemically to insure highest quality. This type of coal is low in ash; high in heat units and hard in structure. Many types of coal are stored on the dock in sizes such as Lump, Egg, Stove and Stoker Coal, as well as Screenings and Slack.

### THE INVINCIBLE MANUFACTURING COMPANY

Starting as a small enterprise in Monroe, Wisconsin, where it manufactured burglar alarm systems and filing cabinets, the Invincible Metal Furniture Company moved to Manitowoc in 1914 to take advantage of the better shipping and manufacturing facilities this city has to offer.

From the few items of steel first built, the products have been gradually increased and broadened to such an extent that this company is now one of the foremost in the Steel Business Equipment industry. This growth of the company necessitated an increased capacity and several large additions have been made to the original factory.

Their standard line consists of steel desks built in every style and grade to meet modern business needs, filing cabinets for every requirement, storage and wardrobe cabinets, document and roller shelf cases, steel counters, partitions, laboratory furniture, as well as bank vault equipment, and safety deposit boxes. Their product is shipped to every part of the United States and many foreign countries.

The laboratory furniture industry was founded in Manitowoc in 1920 under the leadership of a group of well experienced laboratory furniture engineers. The Invincible Co. has been recognized by architects and engineers as having established the highest standards for equipment of this type, with the result that Invincible wood and steel laboratory furniture is considered as being second to none in the industry.

The company has been furnishing laboratory, vocational and library furniture of stock and special design to the leading institutions of learning in the country, including such large universities as Columbia University, Hunter College, Marquette University, A & M College of Texas, the Universities of Texas, Kentucky, Ohio, Illinois, Arkansas, as well as thousands of others, including high schools, hospital laboratories, industrial laboratories, sewage treatment and water system laboratories, vocational schools, libraries, state buildings, etc.

### ICE CREAM

The Fischl Ice Cream and Dairy Company manufacture O'Fischl Ice Cream at their large plant. The most modern machinery for manufacturing ice cream and bottling pasteurized milk has been installed in the plant. Chocolate Milk and Orangade are also bottled.

### BUTTER

The Midwest Creamery Company manufacture bulk and package butter in their modern and sanitary plant, and distribute milk, cream and orange drink. Cottage cheese is also produced in large quantities.

# Manitowoc Parks and Playgrounds



Manitowoc, because of the foresight of its governing body and the influence of many citizens in the public's welfare, is blessed with many attractive parks and play grounds.

Two parks located within a few blocks of the heart of the city are Washington Park and Union Park, both of which cover a full city block. Concerts for the entertainment of the public are held alternately in each park.

Located at the extreme north east end of the city is Lincoln Park or the tourists' headquarters. Here Manitowoc entertains its tourists with an elaborate setting, one hard to equal anywhere in the state. Electric stoves, showers and accommodations necessary for the comfort of the tourist has been provided.



At the extreme south end of the city is Silver Creek Park. Little work has been done to beautify this spot as nature provided for this. The limits of the park extend from south tenth street to the lake. In normal seasons a beautiful creek wends its way thru the center of the park, adding to the beauty of scenery. Fire places, tables, etc. have been provided for the use of many picnickers who make this journey for their day's outing.

To accomodate the many baseball and diamond ball teams additional playgrounds have been provided. West Field, located on the west end of the city is one of the finest baseball diamonds and playing fields in the entire State of Wisconsin.

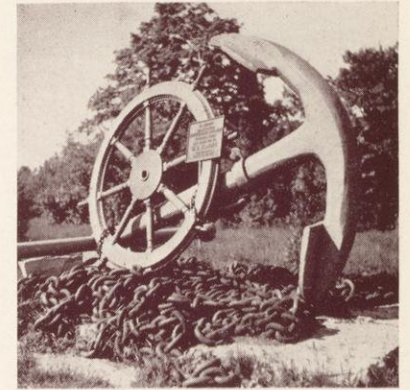
Pulaski Square comprises a city block and is located on the south end of the city.

North Fourth Street Field at 4th and St. Clair street is another playground of this type, here a modern field house is equipped and maintained throughout the year.

Schuettes Park, located at Huron and Eleventh street, offers a commanding view of most of Manitowoc's major industrial plants. From this point, which is a hill overlooking the shipyards, one is able to see carferries and other boats under construction. Be sure to visit this park on your tour of sight seeing.

## Municipal Golf Course

In addition to the above parks Manitowoc has recently completed a 9 hole municipal golf course directly opposite the Lakeside course. This course while still comparatively new, is fast developing to one of the best in the state and very popular with golfers from Manitowoc and Two Rivers.





# Manitowoc Public Schools



LINCOLN HIGH SCHOOL LOOKING SOUTHEAST FROM COLUMBUS STREET OVER THE NATURAL FOOTBALL STADIUM



Woodrow Wilson Junior High School



Vocational School



Public Library



Holy Family Hospital



McKinley School



County Teachers Training School



Lincoln Boulevard



Lincoln Park

Manitowoc boasts and can be justly proud of its school system extending from the lower grades throughout high school. The success of Manitowoc students, many of whom have graduated with high honors from higher places of learning throughout the United States, can be attributed to the teachers as well as supervisors and to the earnest endeavor of the school board headed by Mr. Francis Rugowski as president

Credit must be given to Professor C. G. Stangel for his tireless efforts and never failing interests in school affairs in both Manitowoc and the state. Many times during the course of his routine work, already burdened with school affairs, he has most graciously cast aside his work to offer sound fatherly advice to students losing interest in their work and lending a helping hand to all those willing to accept his generosity.

The combined efforts of the teaching body with the school board have caused Manitowoc to be looked upon as equal to and exceeding by far many of the larger and more elaborate school systems throughout the United States.

Manitowoc has one of the finest high schools in the middle west. This building is located on a hill overlooking the city. The grounds cover approximately seventeen acres. The building is planned to accommodate around 1,100 students. It is designed in the Gothic style and is made majestic by a beautiful tower. The tower, lighted with flood lights, can be seen for miles on both Lake Michigan and state highways leading into Manitowoc. This "Tower of Learning" looms up as a significant beacon representing the communities interest in education.

The Vocational school is the second largest in the state and offers unusual opportunities to boys and girls who desire to acquire knowledge and training of the various phases of our multiple industries and trades, which, today, offer alluring prospects to the younger generation. The school, fortunately, is equipped with modern machinery, and vocational guidance by trained instructors is extended to all who wish to avail themselves of the opportunity. For the benefit of foreigners, adults, boys and girls, an Evening school is conducted in connection with the Vocational school, beginning the first Tuesday in October and continuing throughout the winter months.

# LIST OF DONORS

Rahr Malting Co.  
 J. J. Stangel Hardware Co.  
 J. C. Penny Company, Inc.  
 Manitowoc Shipbuilding Corp.  
 Manitowoc Engineering Works  
 A. B. C. Food Market  
 J. Pfeffer Sons  
 South Side Hardware  
 John Tusil, Commercial Fisherman  
 Tasty Crispy Shop  
 Badger Liquor Company  
 Dr. Kapitan  
 Beensten Candies  
 Shulanders Flowers  
 LaBreche's Paint Shop  
 F. Vogelsang Furniture Co.  
 Berkedal & Shimek  
 Normingtons, Inc.  
 Mr. Wyseman, Attorney  
 Wagners Style Shop  
 Coney Island  
 Nash and Nash  
 Paul F. Machus  
 Architects Raeuber  
 Dr. Turgasen  
 Welhoefer's Sea Grill  
 Dr. Peterson  
 Harris Radio  
 Ploederl Service Station  
 Park Drug  
 Kipens Fruit Market  
 Dr. Odon Wilda  
 F. J. Friedl  
 H. Reinken  
 F. C. Buerstatte Co.  
 Smalley Corporation

Byers Pontiac  
 Urbaneks  
 Ridge Motor Supply  
 Rod's Tavern  
 Kohls Groceries  
 Cue Club  
 Groffmans Pharmacy  
 H. Zannacker & Sons, Inc.  
 Junior Chamber of Commerce  
 Two Rivers Beverage Co.  
 Manitowoc Trust Co.  
 North End Drug Store  
 White House Milk Co.  
 Midwest Creamery  
 Schuette Bros.  
 Lakeside Packing Co.  
 Manitowoc Refrigerating Co.  
 Manitowoc Seed Co.  
 Wm. Rath sack & Sons  
 East Wisconsin Trustee Co.  
 Lindstedt-Hoffman Co.  
 Sears Roebuck Co.  
 Carlier Tire Service  
 Hamachek Bleser Co.  
 F. J. Kerscher Co.  
 Schmidt Lumber Co.  
 Gaterman Mfg. Co.  
 Ed Dunning, Grocer  
 Dick Brothers Bakery  
 Manitowoc Lumber Co.  
 Fehr's Jewelry Store  
 Manitowoc National Bank  
 Manitowoc Savings Bank  
 S. S. Kresge Co.  
 Gerl-Drumm Lumber Co.  
 Manitowoc Portland Cement Co.

Aluminum Specialty Co.  
 Manitowoc Iron & Metal Co.  
 John M. Kadow  
 Globe Laundry  
 Art's Home Bakery  
 Manitowoc Bottling Works  
 Glander's Studio  
 Manitowoc Citizens Loan & Investment Co.  
 Henderson-Hoyt Dept. Store  
 Wisconsin Public Service Corp.  
 Kortas Automotive Co.  
 J. H. Pleuss Realty Co.  
 Princess Confectionery  
 Quality Fruit Company  
 Clark Oil Company  
 Hotel Hay  
 Wisconsin Cleaning & Shoe Repair  
 Invincible Metal Furniture Co.  
 C. Reiss Coal Co.  
 Burger Boat Co.  
 Watawa Urbanek & Schlei  
 Emil Schaus Hardware  
 Fischl Ice Cream & Dairy  
 Streich Oil Co.  
 Guse Lumber Co.  
 First National Bank  
 F. W. Woolworth Co.  
 Manitowoc Awning & Tent Co.  
 National Tinsel Company  
 Plumb-Nelson Company  
 Pauly-Pauly Cheese Co.  
 Copper Boiler & Heater Works  
 G. H. Kallies  
 Oriental Milling Co.  
 Huchthausen Hardware Co.  
 A. M. Richter & Sons Co.  
 Kingsbury Breweries  
 Color Craft Printers, Inc.  
 Royal Cleaners



