



# LIBRARIES

UNIVERSITY OF WISCONSIN-MADISON

## Orchestra part: drums. [189-?]

Kerker, Gustave, 1857-1923; Morton, Hugh, 1865-1916  
[s.l.]: [s.n.], [189-?]

<https://digital.library.wisc.edu/1711.dl/UVT67RPGI6F4W9B>

Based on date of publication, this material is presumed to be in the public domain.

For information on re-use see:

<http://digital.library.wisc.edu/1711.dl/Copyright>

The libraries provide public access to a wide range of material, including online exhibits, digitized collections, archival finding aids, our catalog, online articles, and a growing range of materials in many media.

When possible, we provide rights information in catalog records, finding aids, and other metadata that accompanies collections or items. However, it is always the user's obligation to evaluate copyright and rights issues in light of their own use.



Drums.

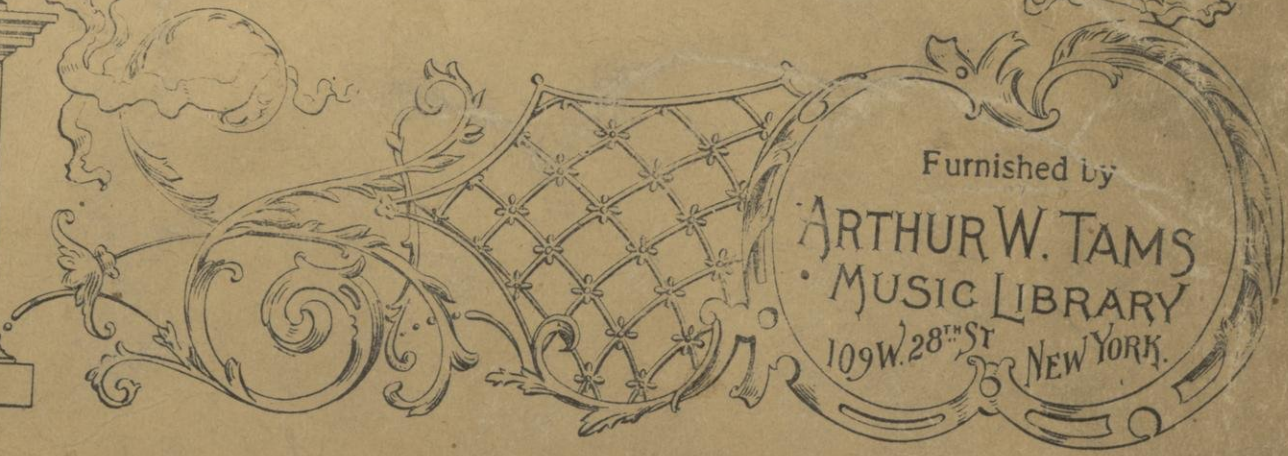
# ORCHESTRATION

of

## BELLE of NEW YORK

Set No **3**

No Copying of this Work Allowed  
Under Any Circumstances.



Furnished by  
**ARTHUR W. TAMS**  
MUSIC LIBRARY  
109 W. 28<sup>th</sup> ST  
NEW YORK.

**TAMS WITMARK, Inc.**  
318 W. 46th ST., N. Y. C.

## WARNING!!

This orchestral score, part or set of parts has been lent to you with the distinct understanding that you do not mark cuts, bowing, dynamic and other marks of expression in ink, crayon or indelible pencil.

To some extent ink can be removed, but no method of removing blue pencil and other crayons has been discovered. A disfiguring mark is always left behind. USE A SOFT BLACK LEAD PENCIL LIGHTLY.

Remove your cuts and other pencil marks and return our property in the same condition that you would expect your own music to be in should you lend it. We will be compelled to make a charge if parts are returned mutilated. Use only a soft eraser when rubbing out cuts.

### FURTHER;

In RENTING this ORCHESTRATION to our CUSTOMERS it is with the distinct understanding that THE CUSTOMER agrees that he has NO RIGHT TO MAKE any copies of any PORTION of any PART of this ORCHESTRATION, and if in Spite of this AGREEMENT he allows any copies to be made of any portion thereof, he agrees that SUCH COPIES are the PROPERTY OF THE TAMS-WITMARK MUSIC LIBRARY, and that they may be seized wherever found and the customer also agrees that he (the customer) will render himself liable for damages to the

**TAMS-WITMARK MUSIC LIBRARY**

19. 8.

"THE SUPERB" A. W. TAMS MUSIC LIBRARY, NEW YORK.

# The Belle of New York

**PLATZ MFG. CO.**  
 1269 Yates St. Toledo, Ohio.  
 —Manufacturers of—  
**DRUMS, TRAPS, BALL**  
**BEARING PEDALS,**  
**ORCHESTRA BELLS, ETC.**  
**IMPORTERS of GENUINE**  
**Chinese Crash Cymbals, Gongs,**  
**Tom Toms, Horns, Etc.**  
 Write for Catalogue.

## Overture

*Cymbal beat with Drumstick.*

*Allegretto*

*Dr. 3rd Cymb. Cymbal Only*

*Triangl*

*Xylophone*

*Small Dr.*

*Cymb. with stick*

*Dr.*

*Cymb. with stick*

*B. Dr. 3rd Cymb.*

"THE SUPERB" A.W. TAMS MUSIC LIBRARY, NEW YORK.

"THE SUPERB" A.W. TAMS MUSIC LIBRARY, NEW YORK.

*Dr.* *Cymb.* *Triangles and Indian Drum.*

*Tymp.*

*Cymb. with stick.* *Cymb. with stick.*

*B. Dr. & Cymb. f*

*B. Dr. & Cymb.* *Cymb.* *B. Dr. & Cymb.*

*Marcia* *Stop*

*Tymp. E<sup>b</sup> A<sup>10</sup>*

*19.*

*B. Dr. Only.*

*3.*

*V. P.*

*Tempo di Valse.*

Musical notation for the first system, featuring a grand staff with piano accompaniment and a treble clef staff. The piano part includes a 3/4 time signature and a measure with the number 19.

Musical notation for the second system, featuring a grand staff with piano accompaniment and a treble clef staff. The piano part includes a 2/4 time signature and a measure with the number 2.

*Grazioso Bells.*

Musical notation for the third system, featuring a grand staff with piano accompaniment and a treble clef staff. The piano part includes a 3/4 time signature and a measure with the number 2.

Musical notation for the fourth system, featuring a grand staff with piano accompaniment and a treble clef staff. The piano part includes a 2/4 time signature and a measure with the number 2.

*Small Drum.*

*Cresc.*

Musical notation for the fifth system, featuring a grand staff with piano accompaniment and a bass clef staff. The piano part includes a *p* dynamic marking and a *Cresc.* instruction.

Musical notation for the sixth system, featuring a grand staff with piano accompaniment and a bass clef staff.

Musical notation for the seventh system, featuring a grand staff with piano accompaniment and a bass clef staff.

Musical notation for the eighth system, featuring a grand staff with piano accompaniment and a bass clef staff.

Musical notation for the ninth system, featuring a grand staff with piano accompaniment and a bass clef staff. The piano part includes a *p* dynamic marking and a measure with the number 12.

"THE SUPERB" A. W. TAMM MUSIC LIBRARY, NEW YORK.


"THE SUPERB" A. W. TAMM MUSIC LIBRARY, NEW YORK.

"THE SUPERB" A.W. TAMM MUSIC LIBRARY, NEW YORK

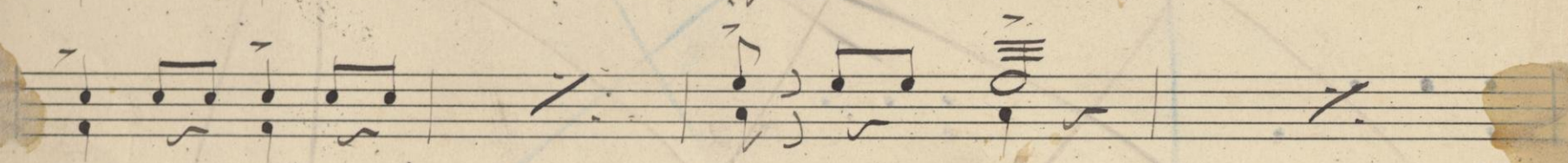
A handwritten musical score for a piece titled "The Superb". The score is written on 12 staves. The first staff begins with a treble clef and a key signature of one sharp (F#). The music is written in a style characteristic of the late 18th or early 19th century. The score includes various musical notations such as notes, rests, and dynamic markings. The first staff has a treble clef and a key signature of one sharp. The second staff has a dynamic marking of *mf*. The third staff has a dynamic marking of *f*. The fourth staff has a dynamic marking of *ff* and a tempo marking of *al tempo*. The fifth staff has a dynamic marking of *f*. The sixth staff has a dynamic marking of *f*. The seventh staff has a dynamic marking of *f*. The eighth staff has a dynamic marking of *f*. The ninth staff has a dynamic marking of *f*. The tenth staff has a dynamic marking of *f*. The eleventh staff has a dynamic marking of *f*. The twelfth staff is empty. The score is written in a style characteristic of the late 18th or early 19th century. The paper is aged and shows some staining.



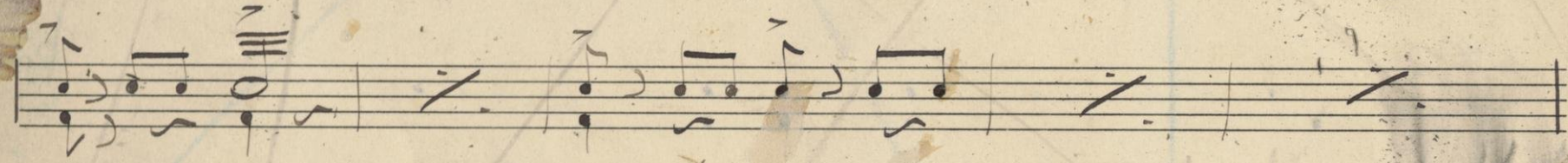
N<sup>o</sup> 1. Opening - Act 1<sup>st</sup>

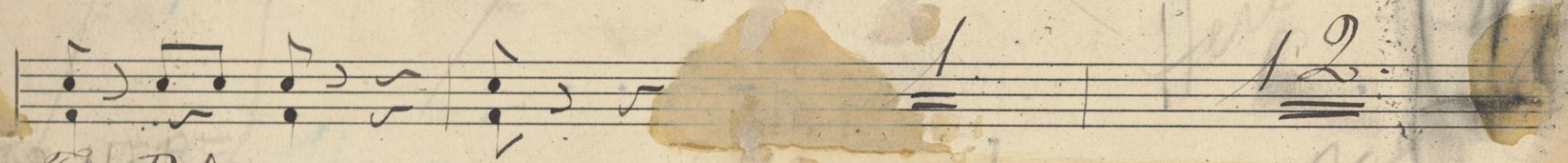
*al<sup>o</sup>*  
*Moderato assai* 

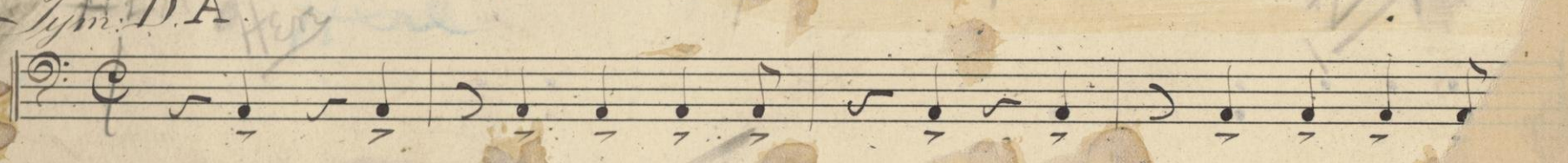




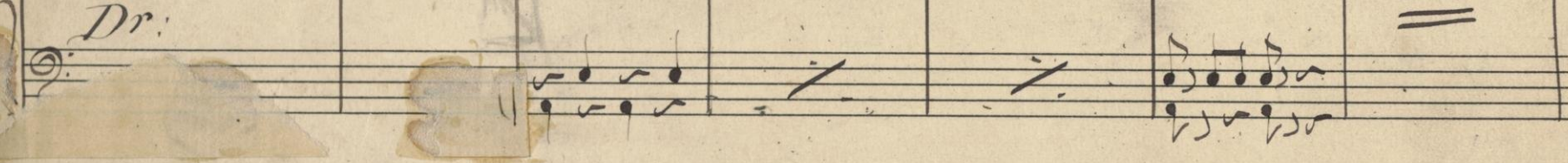


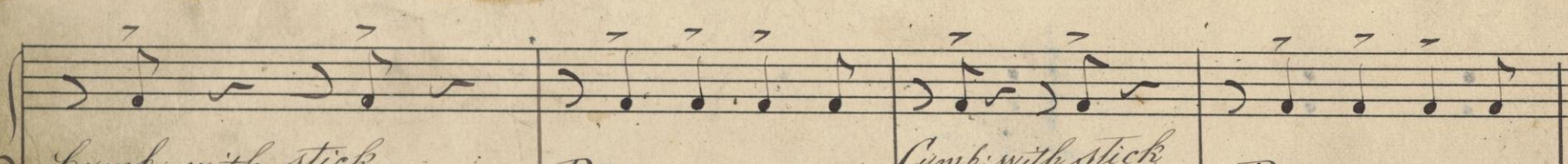


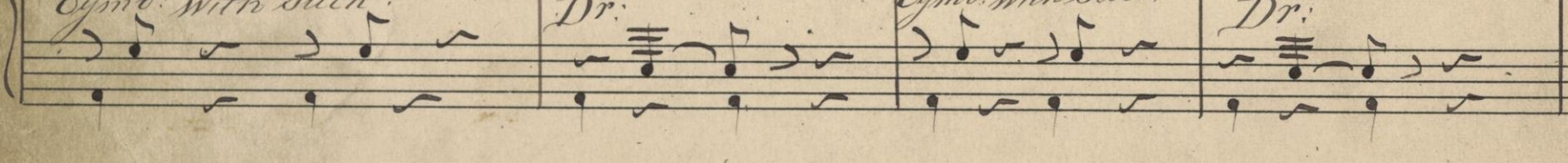


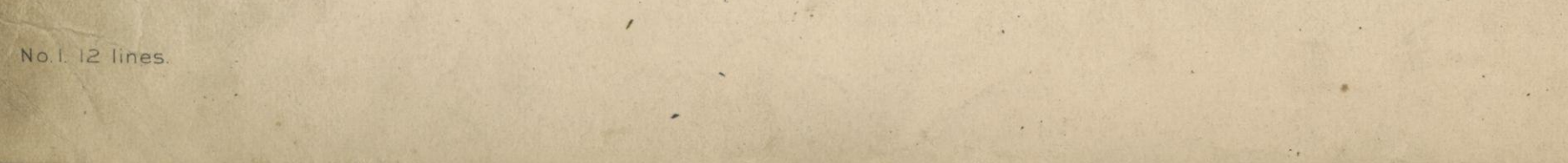
*Tym. D.A.* 

*Tymp.* 

*Dr.* 

*Cymb. with stick.* 

*Dr.* 

*Cymb. with stick.* 

*Dr.* 

"THE SUPPER" A.W. TAMS. MUSIC LIBRARY, NEW YORK.

*Allegretto* 3/4 *Moderato* 2/4

Bells or Triangle

*All. Ad. Al. t. to.* Dr.

3

*Imp*

Handwritten musical notation for the first system, featuring a treble and bass clef with various notes and rests.

3

Handwritten musical notation for the second system, featuring a treble clef with notes and rests.

Handwritten musical notation for the third system, featuring a treble clef with notes and rests.

*Small Dr.*

Handwritten musical notation for the fourth system, featuring a bass clef with notes and rests.

*trall. 1 1 1*

Handwritten musical notation for the fifth system, featuring a bass clef with notes and rests.

20

*Mod<sup>to</sup> 2*

*Bells*

Handwritten musical notation for the sixth system, featuring a treble clef with notes and rests.

2

9

Handwritten musical notation for the seventh system, featuring a treble clef with notes and rests.

**PLATZ MFG. CO.**  
 1269 Yates St. Toledo, Ohio.  
 —Manufacturers of—  
**DRUMS, TRAPS, BALL**  
**BEARING PEDALS,**  
**ORCHESTRA BELLS, ETC.**  
**IMPORTERS of GENUINE**  
 Chinese Crash Cymbals, Gongs,  
 Tom Toms, Horns, Etc.  
 Write for Catalogue.

+6

"THE SUPERB" A.W. TAMM MUSIC LIBRARY, NEW YORK.

"THE SUPERB" A.W. TAMM MUSIC LIBRARY, NEW YORK.

No. 2 Entrance Cora Angelique

*Allegro con Spirito* [Musical notation]

[Musical notation] 1<sup>st</sup> 2<sup>d</sup> Encore 2

Voice [Musical notation]

*Allegretto* 13 [Musical notation]

[Musical notation]

[Musical notation] 3 1<sup>st</sup> 2<sup>d</sup> f

*Con fuoco* [Musical notation]

[Musical notation]

No. 2 1/2 [Musical notation]

*Allegro* [Musical notation]

[Musical notation]

THE SUPERB A. W. TAMS MUSIC LIBRARY, NEW YORK.

N<sup>o</sup> 3. Little Sister Kissie.

Allegro. [Musical notation]

Voice 15. [Musical notation]

B. Dr. Only. [Musical notation]

[Musical notation]

Dance. [Musical notation]

[Musical notation]

Encore then Dance. [Musical notation]

N<sup>o</sup> 3 1/2 Wedding March. Facet.

N<sup>o</sup> 4. Facet.

"THE SUPERB" A.W. TAMS MUSIC LIBRARY, NEW YORK

"THE SUPERB" A.W. TAMS MUSIC LIBRARY, NEW YORK

No 5: Entrance of Rescue Leaguers.

March 9: c 2/4

Cymbals

SD. solo

SD. only

SD. only

No 6 =

Cymbals

cy

16

2 3 4 5 6 7

THE SUPERB: A W TAMS MUSIC LIBRARY, NEW YORK

6/12 - Song 3 or 4 by Bay  
No. 7 Wine Woman and Song. 7

*Allegro*

Handwritten musical score for 'Wine Woman and Song'. It consists of five staves. The first staff is the bass line, marked 'Allegro' and 'f'. The second staff is for 'Voice', with a '7' above it and a '10' below it. The third staff is a piano accompaniment. The fourth and fifth staves are also piano accompaniment, with 'rit.' and 'Tempo' markings. There are various annotations and corrections throughout the score.

MUSIC LIBRARY, NEW YORK

MUSIC LIBRARY, NEW YORK

Continuation of the musical score for 'Wine Woman and Song', consisting of two staves. The first staff has some notes and rests, and the second staff continues the melody. There are some handwritten notes and markings on the staves.

No. 8 La Belle Parisienne.

*Tympani D.A.*  
*Moderato*

Handwritten musical score for 'La Belle Parisienne'. It consists of three staves. The first staff is for 'Tympani D.A.' and is marked 'Moderato'. The second staff is for the main melody, with 'after 1st Verse Only' written above it. The third staff is for 'Dance' and is marked 'Solo'. There are various annotations and markings throughout the score.

THE SUPERB A.W.T.A. LIBRARY, NEW YORK

X

Drums and Bells

No. 9. My little Baby Feet

Bells Scale. Musical notation for bells scale on a staff.

Contra. Musical notation for the contrabass line.

Musical notation for the first part of the piece, including a 3-measure rest and a 15-measure rest.

Dance. Dr. Musical notation for the dance drum part.

Musical notation for the second part of the piece.

Musical notation for the third part of the piece.

Dr. Musical notation for the drum part.

Musical notation for the fourth part of the piece.

Fin. Musical notation for the final part of the piece.

Empty musical staff.

Empty musical staff.

BRARY, NEW YORK

THE SUPERB A.W. TA



N<sup>o</sup> 10. Opening 3<sup>d</sup> Scene. Act 1<sup>st</sup>

*Allegro.*

Small Drum muffled.

Cymb. Only.

Cymb.

Saxophone

Cymbals only.

Timp.

*Goda*  
Cymb.

Small Dr.

10

PLATZ MFG. CO.  
 1269 Yates St. Toledo, Ohio.  
 -Manufacturers of-  
 DRUMS, TRAPS, BALL  
 BEARING PEDALS,  
 ORCHESTRA BELLS, ETC.  
 IMPORTERS of GENUINE  
 Chinese Crash Cymbals, Gongs,  
 Tom Toms, Horns, Etc.  
 Write for Catalogue.

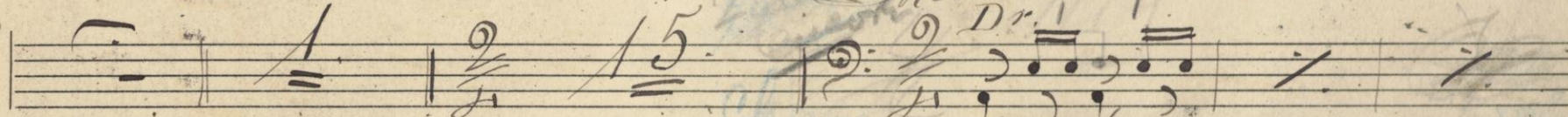
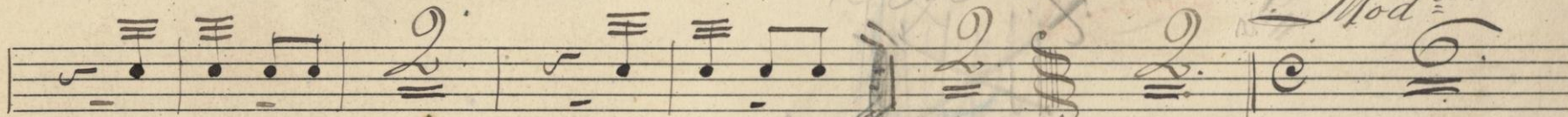
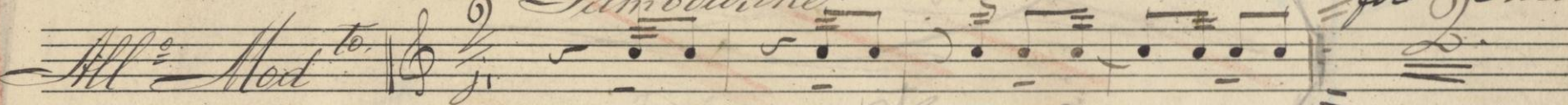


B. Dr. and Cymb.

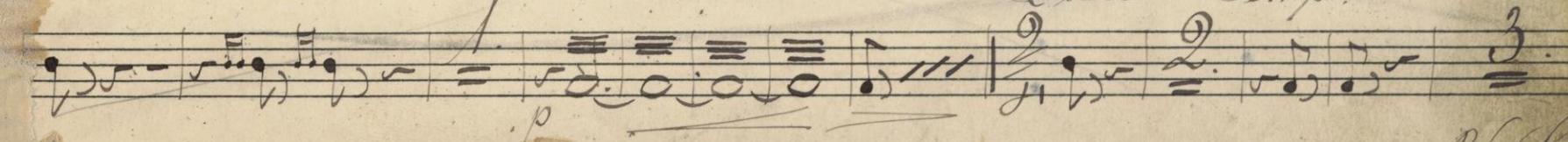
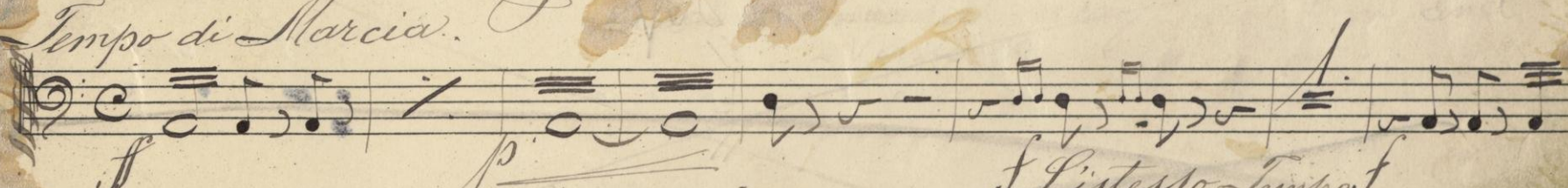
No. 11 They always follow me

Tambourine

No repeat for Encore



No. 12 Song and Dance 13 *Tempo di Marcia* *Timpani D.A.*



V.S.

W. TAMS MUSIC LIBRARY, NEW YORK

"THE SUPERB": A.W. TAMS MUSIC LIBRARY, NEW YORK.

*a Tempo.*

*Chorus*

*rit.*

No. 13 She is the Belle of New York

*Drums*

*Voices* 32

*Chorus*

1 2 3 4

*sc.*

"THE SUPERB": A.W. TAMS MUSIC LIBRARY, NEW YORK.

No. 12 3/4

*Tempo di Morcia* 3/4

No. 11. *Finale Act 1st.*

*Drums. Moderato.* 2/4 *25 rall. Mod. to 28.*

*Voice.* *Dr.*

*rit.* *Tempo.* *B. Dr. Cymb.* *1 cut 8.* *Setup*

*f.*

V. S.

THE SUPERB: A. W. TAMS MUSIC LIBRARY, NEW YORK

48

13

Handwritten musical score on 12 staves. The score includes various musical notations such as notes, rests, and clefs. It features several sections with handwritten annotations: "Marcia" at the bottom left, "Waltz" and "Bells" at the bottom, and "Prestissimo" and "Tempo" in the middle. There are also markings for "Voices" and "rall." (rallentando). A large "13" is written at the top right, and a yellowed rectangular area is present on the left side of the page.

"THE SUPERB" A.W. TAMS MUSIC LIBRARY, NEW YORK.

"THE SUPERB" A.W. TAMS MUSIC LIBRARY, NEW YORK.

Dr.

Handwritten musical notation on the first four staves. The notation includes various rhythmic values, rests, and dynamic markings such as *ppp*. The staves are connected by a brace on the left side.

*Waltz. Very Slow.*

*Voices.*

Handwritten musical notation on the fifth staff, featuring a treble clef and a 3/4 time signature. The notation includes notes, rests, and a dynamic marking of *pp*.

*Grazioso.*

*Bells.*

Handwritten musical notation on the sixth staff, featuring a treble clef and a 2/4 time signature. The notation includes notes, rests, and a dynamic marking of *p*.

*Dr.*

*Basso.*

Handwritten musical notation on the seventh staff, featuring a bass clef and a 2/4 time signature. The notation includes notes, rests, and dynamic markings of *pp* and *f*.

Handwritten musical notation on the eighth staff, featuring a bass clef and a 2/4 time signature. The notation includes notes, rests, and dynamic markings of *f* and *pp*.

*rall.*

*rall.*

*Allegro*

Handwritten musical notation on the ninth staff, featuring a bass clef and a 2/4 time signature. The notation includes notes, rests, and dynamic markings of *f* and *pp*.

Handwritten musical notation on the tenth staff, featuring a treble clef and a 2/4 time signature. The notation includes notes, rests, and dynamic markings of *f* and *pp*.

12

V. J.

Handwritten musical notation on the eleventh staff, featuring a treble clef and a 2/4 time signature. The notation includes notes, rests, and dynamic markings of *f* and *pp*.

THE SUPERBY A.W. TAMS MUSIC LIBRARY, NEW YORK

"THE SUPERB" A. W. TAMM MUSIC LIBRARY, NEW YORK

A handwritten musical score for a piece titled "The Superb". The score is written on 12 staves. The notation includes various rhythmic values, accidentals, and dynamic markings. Key features include:

- Staff 1-3:** Melodic lines with notes and rests. Staff 2 includes a *mf* marking.
- Staff 4:** A series of chords, likely piano accompaniment.
- Staff 5-7:** Melodic lines with dynamic markings *rall.*, *rall.*, and *al tempo*. A red vertical line is drawn through the first two measures of the first *rall.* section.
- Staff 8-10:** Melodic lines with dynamic markings *accel* and *f*.
- Staff 11-12:** Melodic lines with dynamic markings *ff* and *ff*.
- Staff 13:** A single melodic line with a *ff* marking.

There are several handwritten annotations in blue and red ink, including the word "Coco" written vertically on the 11th staff. A piece of yellow tape is applied to the bottom of the 11th and 12th staves.

"THE SUPERB" A. W. TAMM MUSIC LIBRARY, NEW YORK

Drums

No. 15 Opening Oct 2nd

Tempo di Valse

Musical notation line 1

Musical notation line 2

Musical notation line 3

Musical notation line 4

Musical notation line 5

Musical notation line 6

Musical notation line 7

Musical notation line 8

Musical notation line 9

Musical notation line 10

15a Op. 15a

B. Dr. Only

"THE SUPERB" A.W. TAMM MUSIC LIBRARY, NEW YORK.



Handwritten musical score for the first system, consisting of four staves. The notation includes various rhythmic values, accidentals, and dynamic markings such as 'p' (piano).

Handwritten musical score for the second system, consisting of one staff with dynamic markings 'rall.' and 'Vivace.' and measure numbers 16, 17, and 13.

Handwritten musical score for the third system, consisting of one staff with the marking 'Voice.'

Handwritten musical score for the fourth system, consisting of one staff with a triplet marking '3.' and the marking 'Molto'.

Handwritten musical score for the fifth system, consisting of one staff with the marking 'Piu Mosso' and 'Voice.' and measure numbers 11 and 14.

Handwritten musical score for the sixth system, consisting of one staff with the measure number '18' and dynamic marking 'p'.

Handwritten musical score for the seventh system, consisting of one staff with rhythmic notation.

Handwritten musical score for the eighth system, consisting of one staff with rhythmic notation.

Handwritten musical score for the ninth system, consisting of one staff with triplet markings '3.'

"THE SUPERB" A.W. TAMM MUSIC LIBRARY, NEW YORK.

"THE SUPERB" A.W. TAMM MUSIC LIBRARY, NEW YORK.

Musical staff with notes and rests.

*Presto.*

Musical staff with notes and rests, including a blue checkmark.

*1<sup>mo</sup> Tempo.*

Musical staff with notes and rests.

Musical staff with notes and rests.

Musical staff with notes and rests, partially obscured by a tape repair.

*N<sup>o</sup> 16. When we are married. Tacet*

*Bells.*

Musical staff with notes and rests, labeled *Moderato.* and *Voice.*

Musical staff with notes and rests, labeled *Bells*.

Musical staff with notes and rests.

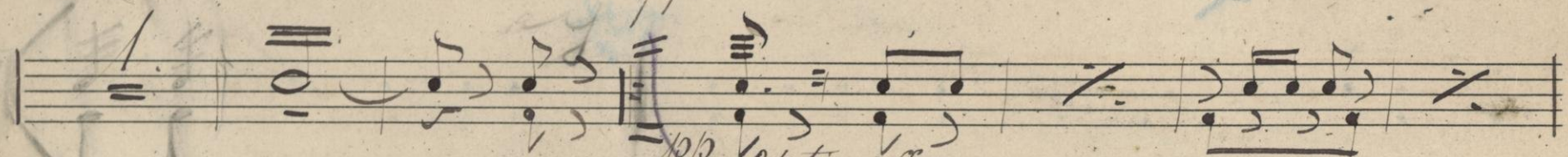
Musical staff with notes and rests.

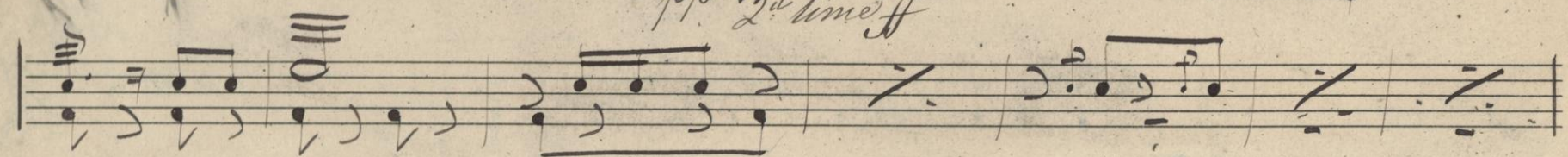
Musical staff with notes and rests, including the number *32.*

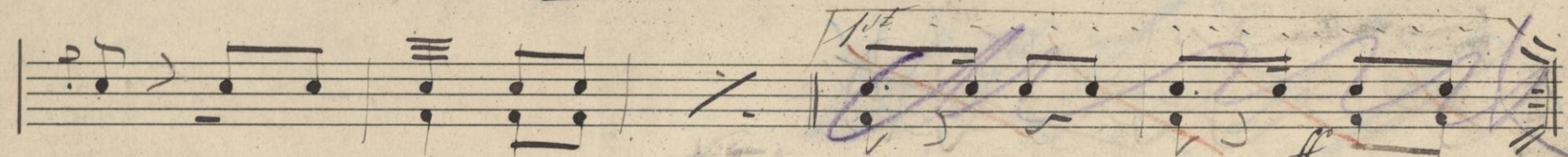
*Long Introduced*

# No. 17. The Purify Brigade.

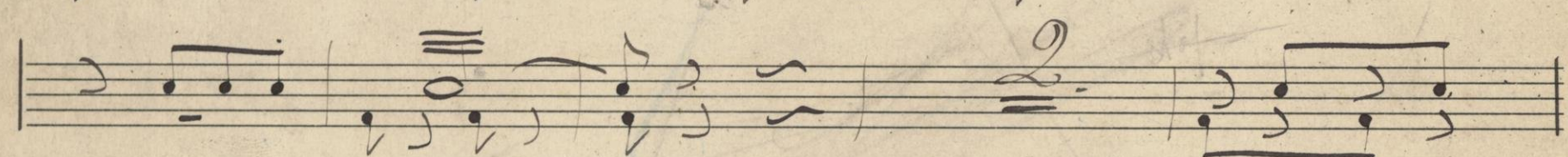
*Marcia.* 

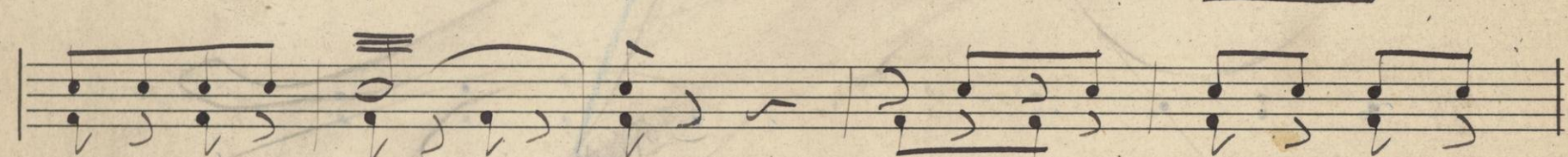


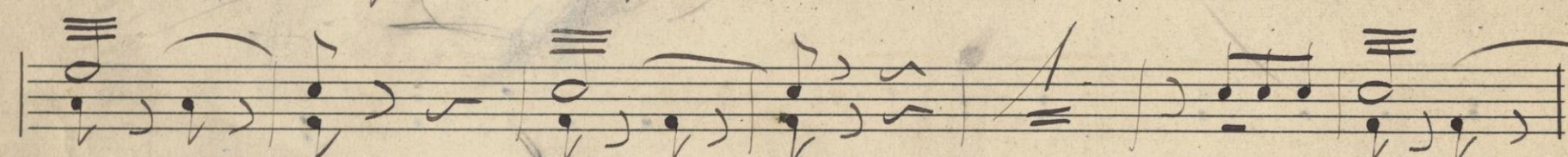




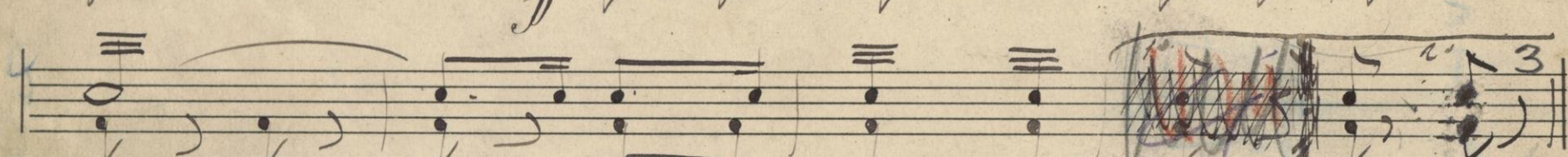


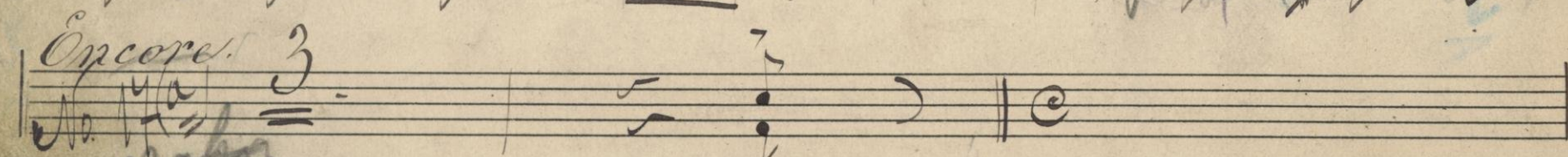










*Encore.* 

"THE SUPERB" A.W. TAMS MUSIC LIBRARY, NEW YORK.

*sf.*

*Andante Moderato*

20  
12

Marcia  
10

"THE SUPERB" A.W. TAMS MUSIC LIBRARY, NEW YORK

Drums.

No. 18 I do - so there.

*Allegro.* *Very fast*

Repeat till off.

Drums.

No. 19<sup>a</sup> Grogan's Fancy Ball

*Allegretto.*

Dance.

Handwritten musical notation for a dance, consisting of two staves with various notes and rests.

No. 19 - Take me down to Coney Island.

Handwritten musical notation for the first part of the piece, including the instruction "Bells and Drums. Allegretto." and a tempo marking of 12.

Handwritten musical notation for the second part of the piece, including the instruction "Meno" and a tempo marking of 8.

Handwritten musical notation for the third part of the piece, including the instruction "Bells" and a tempo marking of 5/8.

Handwritten musical notation for the fourth part of the piece.

Handwritten musical notation for the fifth part of the piece.

Handwritten musical notation for the sixth part of the piece, including the instruction "1st. till ready." and a tempo marking of 2.

Handwritten musical notation for the seventh part of the piece, including the instruction "Dance. On Shell." and a tempo marking of 2.

Handwritten musical notation for the eighth part of the piece, including the instruction "Drums."

Handwritten musical notation for the ninth part of the piece, including the instruction "1st." and a tempo marking of 2.

Repeat Dance till off

Bells and Sympani C. G.

N<sup>o</sup> 20. Plump Girls and Slender Girls.

*Moderato.*

Bells.

*Sympani.*

1<sup>st</sup> time, 3<sup>rd</sup> time. | 2<sup>nd</sup> time twice through.

Bells.

*Dance.*

Play till off

N<sup>o</sup> 21. Opening 3<sup>d</sup> Scene. 2<sup>nd</sup> Act.

*Drumms.*

*All<sup>o</sup> con Spirito.*

"THE SUPERB" A.W. TAMM MUSIC LIBRARY, NEW YORK.

Signatures  
of vocal

"THE SUPERB" A. W. TAMM MUSIC LIBRARY, NEW YORK.

A handwritten musical score consisting of 12 staves. The notation is in a single system with a treble clef and a key signature of one flat (B-flat). The music features a variety of rhythmic patterns, including eighth and sixteenth notes, and rests. There are several measures with a double bar line and a repeat sign. The score is written in ink on aged, slightly yellowed paper. The word "here" is written in the left margin between the 10th and 11th staves. The word "musical" is written in the right margin between the 8th and 9th staves. The final staff ends with a double bar line and a repeat sign.



*No. 22 The naughty Folies-Bergère*

*Allato Vivo*

Handwritten musical score for 'The naughty Folies-Bergère'. It consists of five staves. The first staff is the bass line, starting with a treble clef and a 2/4 time signature. The second and third staves are for the right hand, with a treble clef. The fourth staff is for the left hand, with a bass clef. The fifth staff is for the voice, with a treble clef and a 2/4 time signature. The score includes various musical notations such as notes, rests, and bar lines. There are some annotations in red ink, including 'cut' and 'Lib.'.

*No. 23 Finale Act 2nd*

*Slow Waltz*

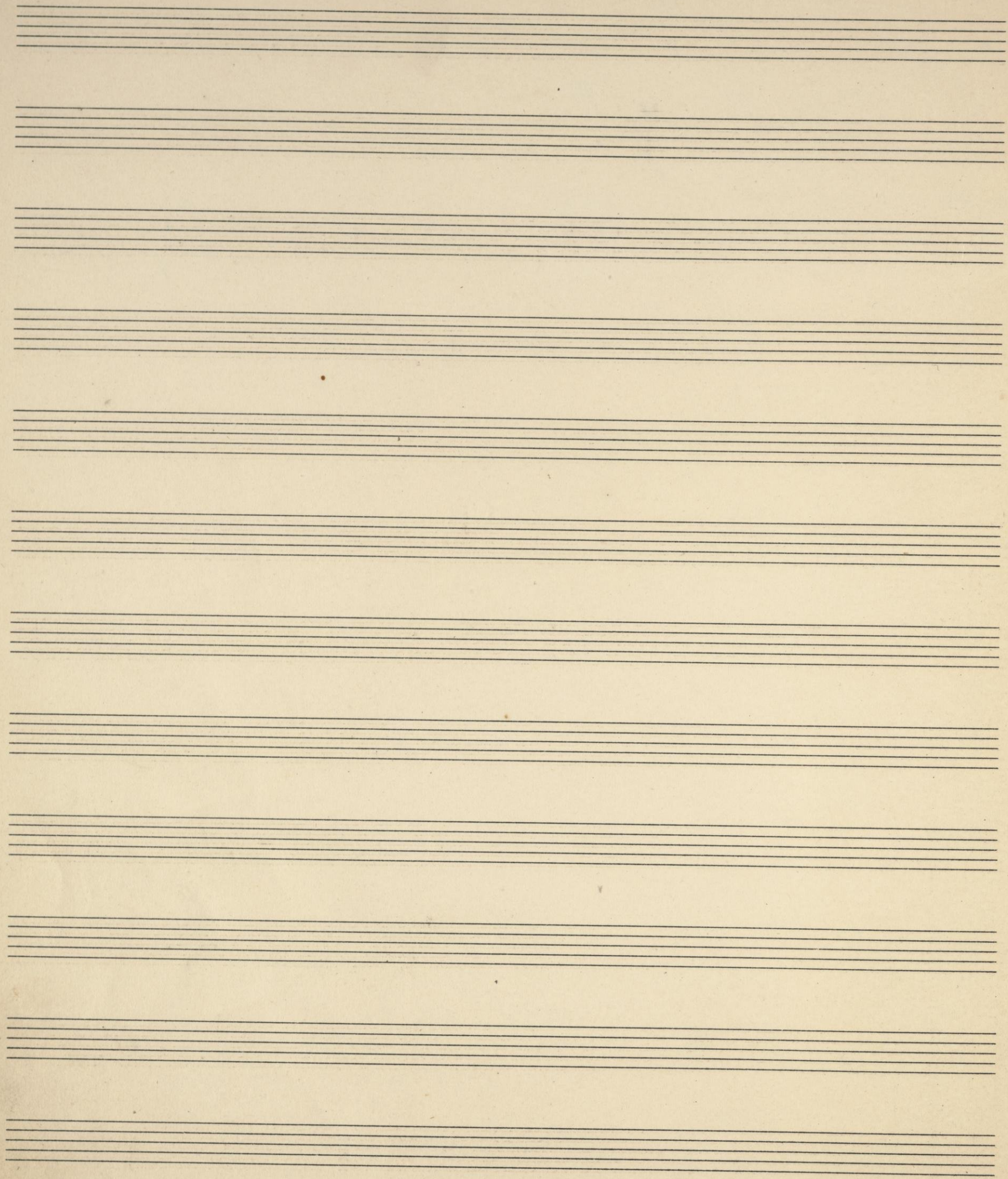
Handwritten musical score for 'Finale Act 2nd'. It consists of five staves. The first staff is the bass line, starting with a treble clef and a 3/4 time signature. The second and third staves are for the right hand, with a treble clef. The fourth and fifth staves are for the left hand, with a bass clef. The score includes various musical notations such as notes, rests, and bar lines. There are some annotations in red ink, including 'cut' and 'Lib.'.

"THE SUPERB" A.W. TAMS MUSIC LIBRARY, NEW YORK

Handwritten musical notation on three staves. The first staff begins with a treble clef and a key signature of three sharps (F#, C#, G#). The word "accel." is written above the first staff. The second staff has a bass clef and a key signature of three sharps. The third staff is partially obscured by a piece of tape. The notation includes various notes, rests, and bar lines. The word "RIT" is written at the top right of the page.

*End of Opera*

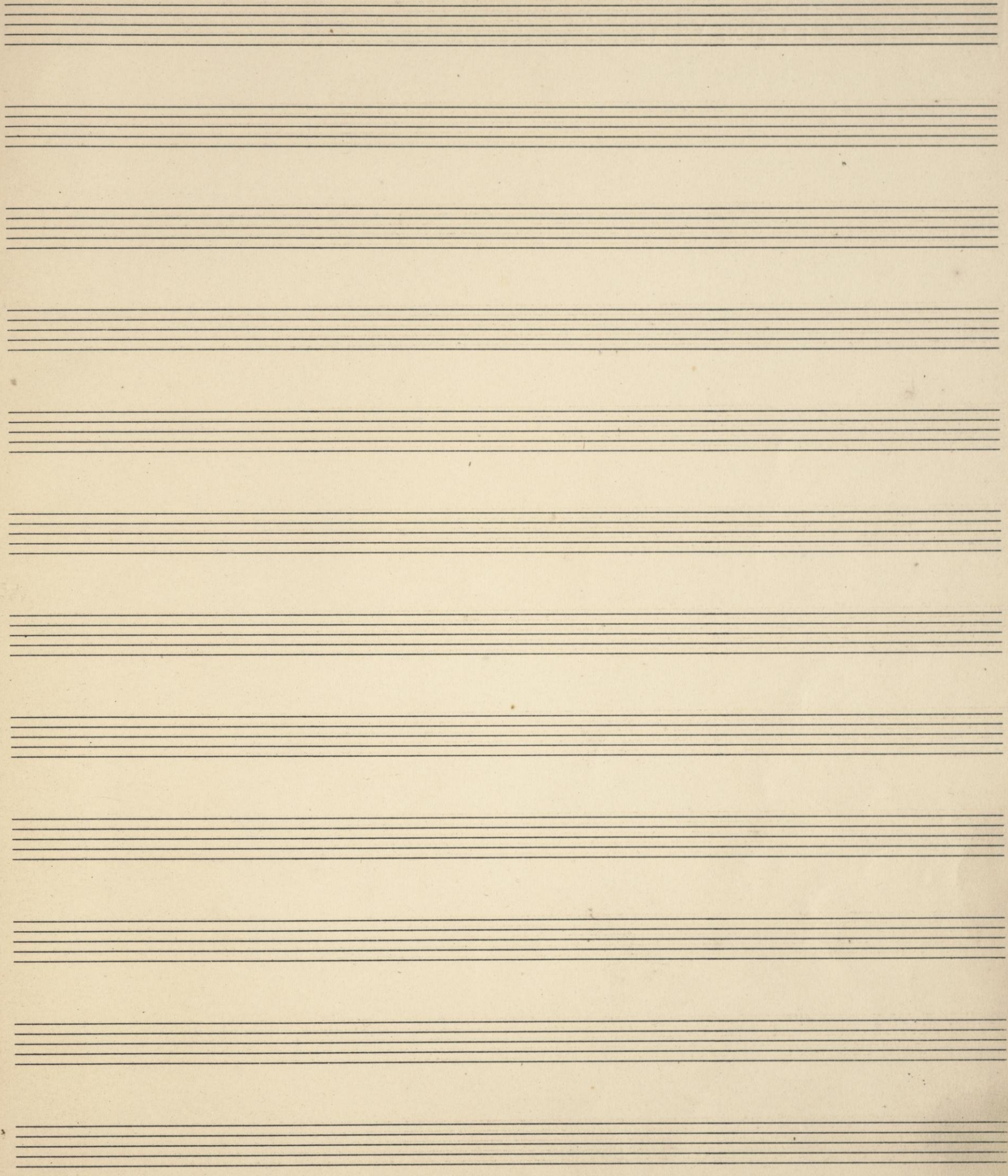
"THE SUPERB" A.W. TAMS MUSIC LIBRARY, NEW YORK.



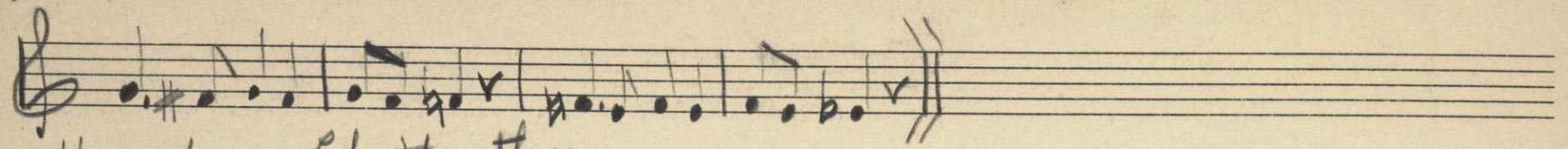
No. 1. 12 lines.

"THE SUPERB" A.W. TAMS MUSIC LIBRARY, NEW YORK.

"THE SUPERB" A. W. TAMS MUSIC LIBRARY, NEW YORK.



mod.



How do you like this them

"THE SUPERB" A. W. TAMS MUSIC LIBRARY, NEW YORK.

△ 1-19-13

