



LIBRARIES

UNIVERSITY OF WISCONSIN-MADISON

Styles of wood type carried in stock at Hamilton Mfg. Co..

[s.l.]: [s.n.], ca. 1931-1932

<https://digital.library.wisc.edu/1711.dl/CSRRRDQHDDNPS8G>

<http://rightsstatements.org/vocab/InC/1.0/>

The libraries provide public access to a wide range of material, including online exhibits, digitized collections, archival finding aids, our catalog, online articles, and a growing range of materials in many media.

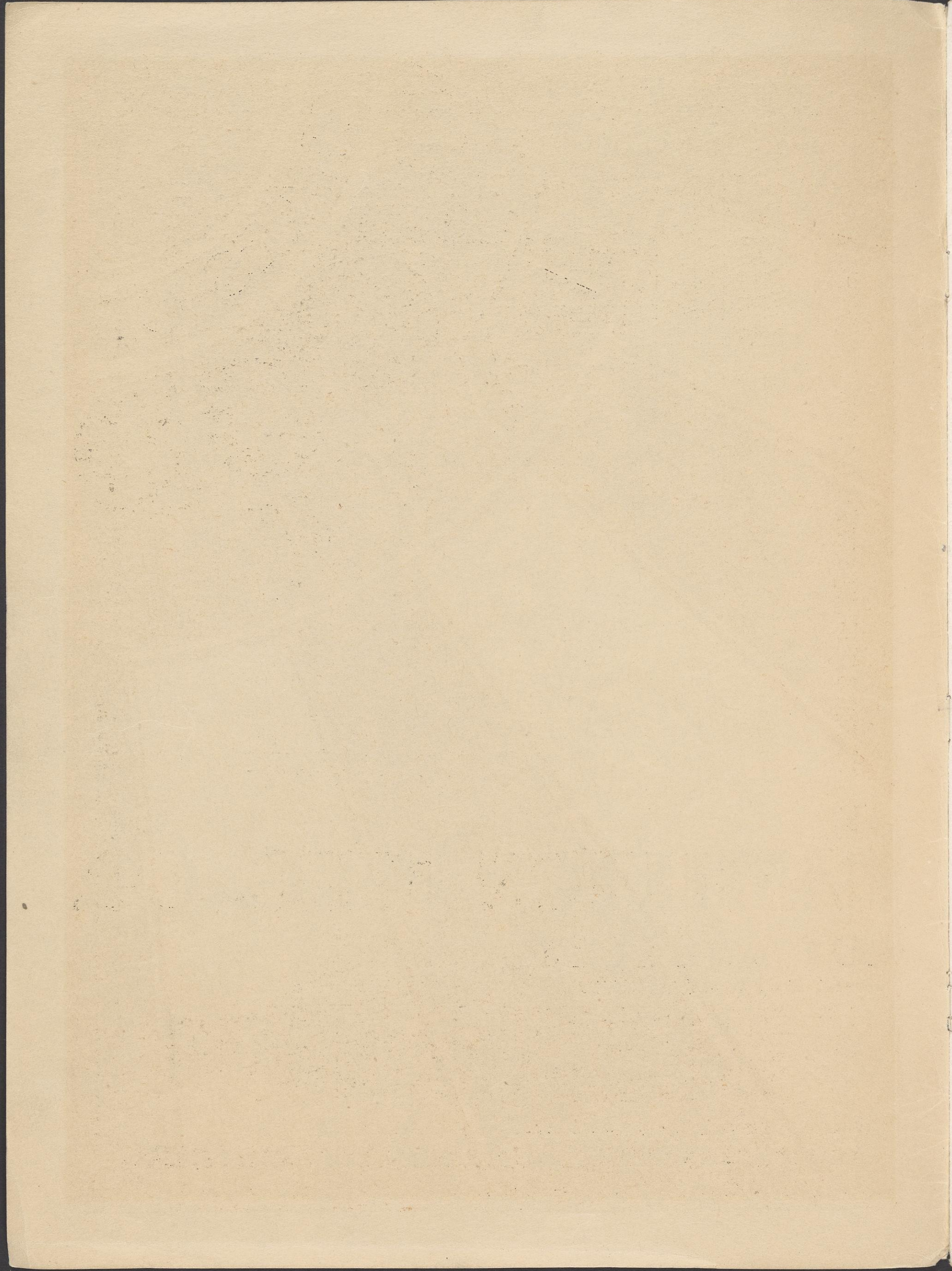
When possible, we provide rights information in catalog records, finding aids, and other metadata that accompanies collections or items. However, it is always the user's obligation to evaluate copyright and rights issues in light of their own use.

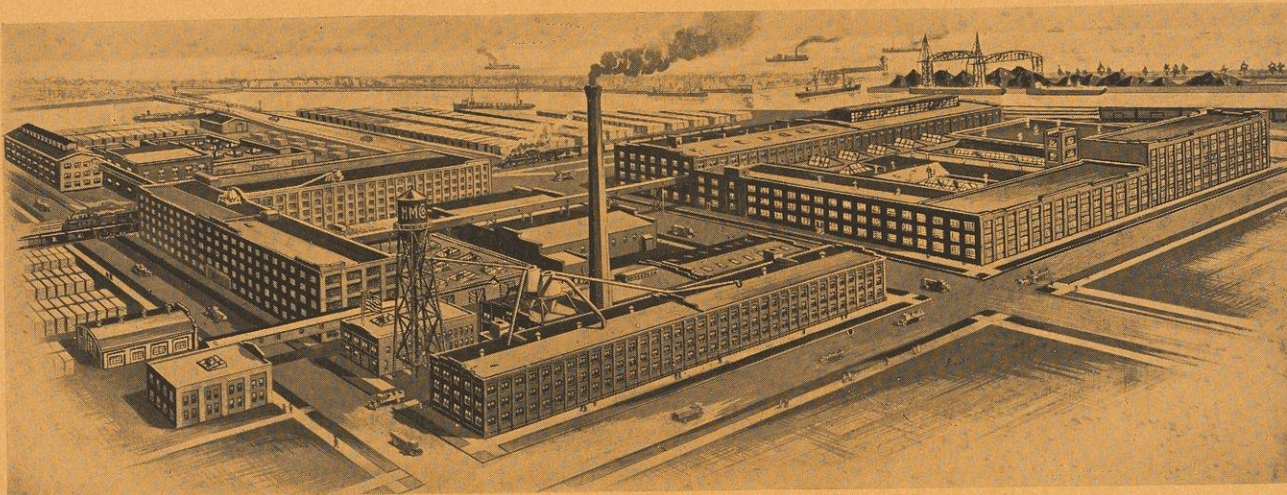
**CARRIED
IN STOCK**

**NEW
STYLES OF
WOOD
PREF**

**AT
HAMILTON MFG. CO.
LOS ANGELES
4440 EAST 49TH ST.**

**MAIN OFFICE AND FACTORY TWO RIVERS, WIS.
PACIFIC COAST OFFICE AND FACTORY LOS ANGELES, CAL.
EASTERN OFFICE AND WAREHOUSE RAHWAY, N. J.**





MAIN FACTORY—TWO RIVERS, WIS.

To Printers of the Pacific Coast

The Hamilton Manufacturing Company have been serving the printers of the Pacific Coast for about fifty years. We have given the best service we could under the circumstances of our being three thousand miles away. Now, however, this is changed and we have a factory and warehouse located at Los Angeles.

Besides manufacturing and stocking printers' equipment in both wood and steel, we are also carrying a complete stock of wood type faces, as shown in this book. No longer is it necessary to wait three and four weeks for wood type wanted on a rush job. It is in stock on the Coast and ready for immediate shipment the day the order is received. Besides the faces shown in this book we have patterns to make thousands of other faces. Our wood type and other equipment is handled by all Prominent Dealers in Type Foundry Supplies.

Hamilton Manufacturing Company

Two Rivers, Wisconsin

Rahway, New Jersey 4440 East 49th Street, Los Angeles, California



Hamilton Manufacturing Company

Information About Ordering Wood Type

The styles of wood type shown in this book are only the ones carried in stock at Los Angeles. All other styles must be made up at our factory in Two Rivers, Wisconsin. These styles are the ones most frequently used and wanted on very short notice. They are packed, ready for immediate shipment the day the order is received in the size fonts as listed in the large table below.

It will be noted in Table below that this stock of wood type is carried in 6-, 8-, 10-, 12-, 15- and 20-line sizes. The style numbers are listed in the extreme left hand column. Opposite each style number in the columns of the various sizes, are shown the size and kind of fonts (whether caps, lower case or figures) carried in stock of that style and also the cost to the printer of those fonts. *Example:* Assuming that style No. 266 is wanted in 10-line size in caps and figures. By referring to this table it will be noted that we have in stock 3-A caps priced at \$7.50, 4-A caps at \$10.60, No. 1 Figures at \$2.60, and No. 2 Figures at \$4.00. By referring to the "Fonting Scheme Table," the total number of characters as well as the quantity of each character in each size font will be found.

Our Los Angeles plant will be prepared to furnish sorts for the styles shown herein. For prices of sorts see our regular price list.

As already mentioned, the styles shown in this book are only those in stock at our Los Angeles plant. All wood type is manufactured at Two Rivers, Wisconsin, our main factory. A group of pamphlets showing some of the other styles made will be sent you on request. We have patterns to make thousands of different styles of wood type. If nothing in our advertising illustrates what you want, communicate with your dealer in supplies, who will write us for any information you might desire. By sending proofs of type you already have (if you do not know the style number), we can supply additional characters if the type is of our manufacture.

Our wood type is handled by all prominent dealers in type foundry supplies. When ordering, send your orders to us through them. If, in order to save time, you should find it necessary to send to us direct, tell us through what dealer you want us to bill the goods.

FONTING SCHEME

SHOWING QUANTITY OF EACH CHARACTER IN EACH SIZE FONT							
CAP FONTS		LOWERCASE FONTS		FIGURE FONTS			
3	4		3		No. 1	No. 2	
A	A		a		26	40	
75	106		65		Pieces	Pieces	
Letters	Letters		Letters				
A	3	4	a	3	1	3	5
B	2	3	b	2	2	2	4
C	2	3	c	2	3	2	3
D	2	3	d	2	4	2	3
E	4	5	e	4	5	2	3
F	2	3	f	2	6	2	3
G	2	3	g	2	7	2	3
H	2	3	h	2	8	2	3
I	4	4	i	3	9	2	3
J	2	3	j	1	0	5	7
K	1	2	k	1	\$	2	3
L	3	5	l	4	If double letters (fi, fl, ff, and ffi) are not wanted in lower case font, they may be omitted and customer may select additional quantity of other characters to complete the total.		
M	2	3	m	2			
N	3	4	n	3			
O	3	4	o	3			
P	2	3	p	2			
Q	1	2	q	1			
R	3	4	r	3			
S	4	5	s	4			
T	3	4	t	4			
U	2	3	u	2			
V	2	3	v	2			
W	2	3	w	2			
X	1	2	x	1			
Y	2	3	y	2			
Z	1	2	z	1			
&	1	2	fi	1			
.	3	4	fl	1			
,	3	4	ff	1			
;	1	1	ffi	1			
:	2	2					
!	1	2					
?	1	1					

Table Showing Fonts Carried in Stock and Prices

Style No.	6-LINE SIZE		8-LINE SIZE		10-LINE SIZE		12-LINE SIZE		15-LINE SIZE		20-LINE SIZE	
	Size of Font in Stock	Price per Font	Size of Font in Stock	Price per Font	Size of Font in Stock	Price per Font	Size of Font in Stock	Price per Font	Size of Font in Stock	Price per Font	Size of Font in Stock	Price per Font
81	3-A Caps No. 1 Figs.	\$ 5.25 1.82	3-A Caps No. 1 Figs.	\$ 6.75 2.34	3-A Caps No. 1 Figs.	\$ 7.50 2.60	3-A Caps No. 1 Figs.	\$ 9.00 3.12	3-A Caps No. 1 Figs.	\$10.50 3.64	3-A Caps No. 1 Figs.	\$12.00 4.16
266	3-A Caps 4-A Caps No. 1 Figs. No. 2 Figs.	5.25 7.42 1.82 2.80	3-A Caps 4-A Caps No. 1 Figs. No. 2 Figs.	6.75 9.54 2.34 3.60	3-A Caps 4-A Caps No. 1 Figs. No. 2 Figs.	7.50 10.60 2.60 4.00	3-A Caps No. 1 Figs.	9.00 3.12	3-A Caps No. 1 Figs.	10.50 3.64	3-A Caps No. 1 Figs.	12.00 4.16
720	3-A Caps No. 1 Figs.	5.25 1.82	3-A Caps No. 1 Figs.	6.75 2.34	3-A Caps No. 1 Figs.	7.50 2.60	3-A Caps No. 1 Figs.	9.00 3.12	3-A Caps No. 1 Figs.	11.25 3.90	3-A Caps No. 1 Figs.	13.50 4.68
779	3-A Caps 3-a l.c. No. 1 Figs.	5.25 4.55 1.82	3-A Caps 3-a l.c. No. 1 Figs.	6.75 5.85 2.34	3-A Caps 3-a l.c. No. 1 Figs.	8.25 7.16 2.86	3-A Caps 3-a l.c. No. 1 Figs.	10.50 9.10 3.64	3-A Caps 3-a l.c. No. 1 Figs.	12.75 11.05 4.42	3-A Caps No. 1 Figs.	16.50 5.72
780	3-A Caps 3-a l.c. No. 1 Figs.	5.25 4.55 1.82	3-A Caps 3-a l.c. No. 1 Figs.	6.75 5.85 2.34	3-A Caps 3-a l.c. No. 1 Figs.	8.25 7.16 2.86	3-A Caps 3-a l.c. No. 1 Figs.	10.50 9.10 3.64	3-A Caps 3-a l.c. No. 1 Figs.	12.75 11.05 4.42	3-A Caps No. 1 Figs.	16.50 5.72
794	3-A Caps No. 1 Figs.	6.75 2.34	3-A Caps No. 1 Figs.	8.25 2.86	3-A Caps No. 1 Figs.	9.75 3.38	3-A Caps No. 1 Figs.	12.00 4.16	3-A Caps No. 1 Figs.	15.00 5.20	3-A Caps No. 1 Figs.	19.50 6.76
4006	3-A Caps 4-A Caps No. 1 Figs.	5.25 7.42 1.82	3-A Caps 4-A Caps No. 1 Figs.	6.75 9.54 2.34	3-A Caps 4-A Caps No. 1 Figs.	7.50 10.60 2.60	3-A Caps 4-A Caps No. 1 Figs. No. 2 Figs.	9.00 12.72 3.12 4.80	3-A Caps 4-A Caps No. 1 Figs. No. 2 Figs.	10.50 14.84 3.64 5.60	3-A Caps No. 1 Figs.	12.00 4.16
4045	3-A Caps 4-A Caps No. 1 Figs.	5.25 7.42 1.82	3-A Caps 4-A Caps No. 1 Figs.	6.75 9.54 2.34	3-A Caps 4-A Caps No. 1 Figs.	7.50 10.60 2.60	3-A Caps 4-A Caps No. 1 Figs.	9.00 12.72 3.12	3-A Caps No. 1 Figs.	11.25 3.90	3-A Caps No. 1 Figs.	13.50 4.68
4050	3-A Caps No. 1 Figs.	5.25 1.82	3-A Caps No. 1 Figs. No. 2 Figs.	6.75 2.34 3.60	3-A Caps 4-A Caps No. 1 Figs. No. 2 Figs.	7.50 10.60 2.60 4.00	3-A Caps 4-A Caps No. 1 Figs. No. 2 Figs.	9.00 12.72 3.12 4.80	3-A Caps 4-A Caps No. 1 Figs. No. 2 Figs.	10.50 14.84 3.64 5.60	3-A Caps No. 1 Figs.	12.00 4.16
6243	3-A Caps No. 1 Figs.	5.25 1.82	3-A Caps No. 1 Figs.	6.75 2.34	3-A Caps No. 1 Figs.	7.50 2.60	3-A Caps No. 1 Figs.	9.00 3.12	3-A Caps No. 1 Figs.	10.50 3.64	3-A Caps No. 1 Figs.	12.00 4.16

Hamilton Manufacturing Company

No. 81—Class L

Five Line, 7c per Letter

1234567890 HAM

No. 81—Class L

Five Line, 7c per Letter

Misunderstanders

No. 81—Class L

Eight Line, 9c per Letter

MONARCHS

No. 81—Class L

Ten Line, 10c per Letter

CORNERS

No. 81—Class L

Twelve Line, 12c per Letter

ROUNDS

No. 81—Class L

Fifteen Line, 14c per Letter

GORED

Type shown hereon—Caps, Lower Case and Figures—supplied in any size desired, from 4 to 100 line.

No. 81—Class L

Eighteen Line, 15c per Letter

BORN

No. 81—Class L

Twenty Line, 16c per Letter

ROM

No. 81—Class L

Twenty-four Line, 19c per Letter

HUG

Larger or smaller sizes increase or decrease in exact proportion. Example: The 8 line size is exactly twice as high, twice as wide, and the stems twice as heavy as the same design in 4 line.

Hamilton Manufacturing Company

No. 266—Class L

Five Line, 7c per Letter

1234567890\$

No. 266—Class L

Six Line, 7c per Letter

Mountain Breaks

No. 266—Class L

Eight Line, 9c per Letter

CONSUME

No. 266—Class L

Ten Line, 10c per Letter

MINERS

No. 266—Class L

Twelve Line, 12c per Letter

ROUND

No. 266—Class L

Fifteen Line, 14c per Letter

BUSH

No. 266—Class L

Eighteen Line, 15c per Letter

RIDE

No. 266—Class L

Twenty Line, 16c per Letter

BUG

No. 266—Class L

Twenty-four Line, 19c per Letter

RID

Type shown hereon—Caps, Lower Case and Figures—supplied in any size desired, from 4 to 100 line.

Larger or smaller sizes increase or decrease in exact proportion. Example: The 8 line size is exactly twice as high, twice as wide, and the stems twice as heavy as the same design in 4 line.

Hamilton Manufacturing Company

No. 720—Class M.

Four Line, 6c per Letter

1234567890\$

No. 720—Class M.

Four Line, 6c per Letter

Glad Romans S

No. 720—Class M.

Five Line, 7c per Letter

MACHINES

No. 720—Class M.

Six Line, 7c per Letter

ROSEBUD

No. 720—Class M.

Eight Line, 9c per Letter

MOUND

No. 720—Class M.

Ten Line, 10c per Letter

PICKE

No. 720—Class M.

Twelve Line, 12c per Letter

HIDE

No. 720—Class M.

Fifteen Line, 15c per Letter

BOH

No. 720—Class M.

Twenty Line, 18c per Letter

RIG

No. 720—Class M.

Twenty-four Line, 21c per Letter

M

Type shown hereon—Caps, Lower Case and Figures—supplied in any size desired, from 4 to 100 line.

Larger or smaller sizes increase or decrease in exact proportion. Example: The 8 line size is exactly twice as high, twice as wide, and the stems twice as heavy as the same design in 4 line.

Hamilton Manufacturing Company

No. 4006—Class L

Four Line, 6c per Letter

1234567890\$

No. 4006—Class L

Four Line, 6c per Letter

Mountainoak bears

No. 4006—Class L

Four Line, 6c per Letter

HUMAN WISDOM

No. 4006—Class L

Six Line, 7c per Letter

BRIMSTONE

No. 4006—Class L

Eight Line, 9c per Letter

NOTIONS

No. 4006—Class L

Ten Line, 10c per Letter

RICHES

No. 4006—Class L

Twelve Line, 12c per Letter

BIRDS

No. 4006—Class L

Fifteen Line, 14c per Letter

NICE

No. 4006—Class L

Twenty Line, 16c per Letter

HIM

No. 4006—Class L

Twenty-four Line, 19c per Letter

ME

Type shown hereon—Caps, Lower Case and Figures—supplied in any size desired, from 4 to 100 line.

Larger or smaller sizes increase or decrease in exact proportion. Example: The 8 line size is exactly twice as high, twice as wide, and the stems twice as heavy as the same design in 4 line.

Hamilton Manufacturing Company

No. 4045—Class M

Four Line, 6c per Letter

123456789

No. 4045—Class M

Four Line, 6c per Letter

Numerations

No. 4045—Class M

Four Line, 6c per Letter

MODERNIZED

No. 4045—Class M

Six Line, 7c per Letter

MOUSER

No. 4045—Class M

Eight Line, 9c per Letter

FORCE

No. 4045—Class M

Ten Line, 10c per Letter

DUCE

No. 4045—Class M

Twelve Line, 12c per Letter

ROB

No. 4045—Class M

Fifteen Line, 15c per Letter

KID

No. 4045—Class M

Twenty Line, 18c per Letter

BE

No. 4045—Class M

Twenty-four Line, 21c per Letter

R

Type shown hereon—Caps, Lower Case and Figures—supplied in any size desired, from 4 to 100 line.

Larger or smaller sizes increase or decrease in exact proportion. Example: The 8 line size is exactly twice as high, twice as wide, and the stems twice as heavy as the same design in 4 line.

Hamilton Manufacturing Company

No. 4050—Class L

Four Line, 6c per Letter

1234567890 \$

No. 4050—Class L

Four Line, 6c per Letter

EntertainmentsD

No. 4050—Class L

Five Line, 7c per Letter

HAIR TONIC

No. 4050—Class L

Six Line, 7c per Letter

NEBULOUS

No. 4050—Class L

Eight Line, 9c per Letter

GINGER

No. 4050—Class L

Ten Line, 10c per Letter

RINSE

No. 4050—Class L

Twelve Letter, 12c per Letter

CURB

No. 4050—Class L

Fifteen Line, 14c per Letter

MEN

No. 4050—Class L

Twenty Line, 16c per Letter

CM

No. 4050—Class L

Twenty-four Line, 19c per Letter

ED

Type shown hereon—Caps, Lower Case and Figures—supplied in any size desired, from 4 to 100 line.

Larger or smaller sizes increase or decrease in exact proportion. Example: The 8 line size is exactly twice as high, twice as wide, and the stems twice as heavy as the same design in 4 line.

Hamilton Manufacturing Company

No. 6243—Class L

Four Line, 6c per Letter

123456789

No. 6243—Class L

Four Line, 6c per Letter

Enumerated an

No. 6243—Class L

Four Line, 6c per Letter

ROSEBUDING

No. 6243—Class L

Six Line, 7c per Letter

BINDERS

No. 6243—Class L

Eight Line, 9c per Letter

HORSE

No. 6243—Class L

Ten Line, 10c per Letter

SEND

No. 6243—Class L

Twelve Line, 12c per Letter

NICE

No. 6243—Class L

Fifteen Line, 14c per Letter

RIG

No. 6243—Class L

Twenty-Line, 16c per Letter

DN

No. 6243—Class L

Twenty-four Line, 19c per Letter

M

Type shown hereon—Caps, Lower Case and Figures—supplied in any size desired, from 4 to 100 line.

Larger or smaller sizes increase or decrease in exact proportion. Example: The 8 line size is exactly twice as high, twice as wide, and the stems twice as heavy as the same design in 4 line.

COOPER BLACK

No. 779 — Class O

4 line, 6c per letter

1234567890\$ 125¢

No. 779 — Class O

6 line, 7c per letter

Metal Locks

No. 779 — Class O

8 line, 9c per letter

STRONG

No. 779 — Class O

10 line, 11c per letter

BRUSH

No. 779 — Class O

12 line, 14c per letter

DANE

No. 779 — Class O

15 line, 17c per letter

MUG

Larger or smaller sizes increase or decrease in exact proportion. Example: The 8 line size is exactly twice as high, twice as wide, and the stems twice as heavy as the same design in 4 line.

COOPER BLACK CONDENSED

No. 780 — Class O

4 line, 6c per letter

1234567890\$ 1234568¢

No. 780 — Class O

6 line, 7c per letter

Establishments

No. 780 — Class O

8 line, 9c per letter

GUNSTOCK

No. 780 — Class O

10 line, 11c per letter

MANGER

No. 780 — Class O

12 line, 14c per letter

HOUND

No. 780 — Class O

15 line, 17c per letter

BIRDS

Larger or smaller sizes increase or decrease in exact proportion. Example: The 8 line size is exactly twice as high, twice as wide, and the stems twice as heavy as the same design in 4 line.

COOPER BLACK ITALIC

No. 794 — Class P

4 line, 6c per letter

1 2 3 4 5 6 7 8 9 0 \$ ¢

No. 794 — Class P

6 line, 9c per letter

Reductions

No. 794 — Class P

8 line, 11c per letter

HORSES

No. 794 — Class P

10 line, 13c per letter

GRIND

No. 794 — Class P

12 line, 16c per letter

MOPS

No. 794 — Class P

15 line, 20c per letter

BUR

Larger or smaller sizes increase or decrease in exact proportion. Example: The 8 line size is exactly twice as high, twice as wide, and the stems twice as heavy as the same design in 4 line.

