



LIBRARIES

UNIVERSITY OF WISCONSIN-MADISON

Barneveld community profile. June, 1977

Fifth hour english and social studies class, Barneveld High School,
Barneveld, WI

Barneveld, Wisconsin: [s.n.], June, 1977

<https://digital.library.wisc.edu/1711.dl/WRUMNPL6YIM7U87>

This material may be protected by copyright law (e.g., Title 17, US Code).

Original material owned by Barneveld Public Library.

For information on re-use, see

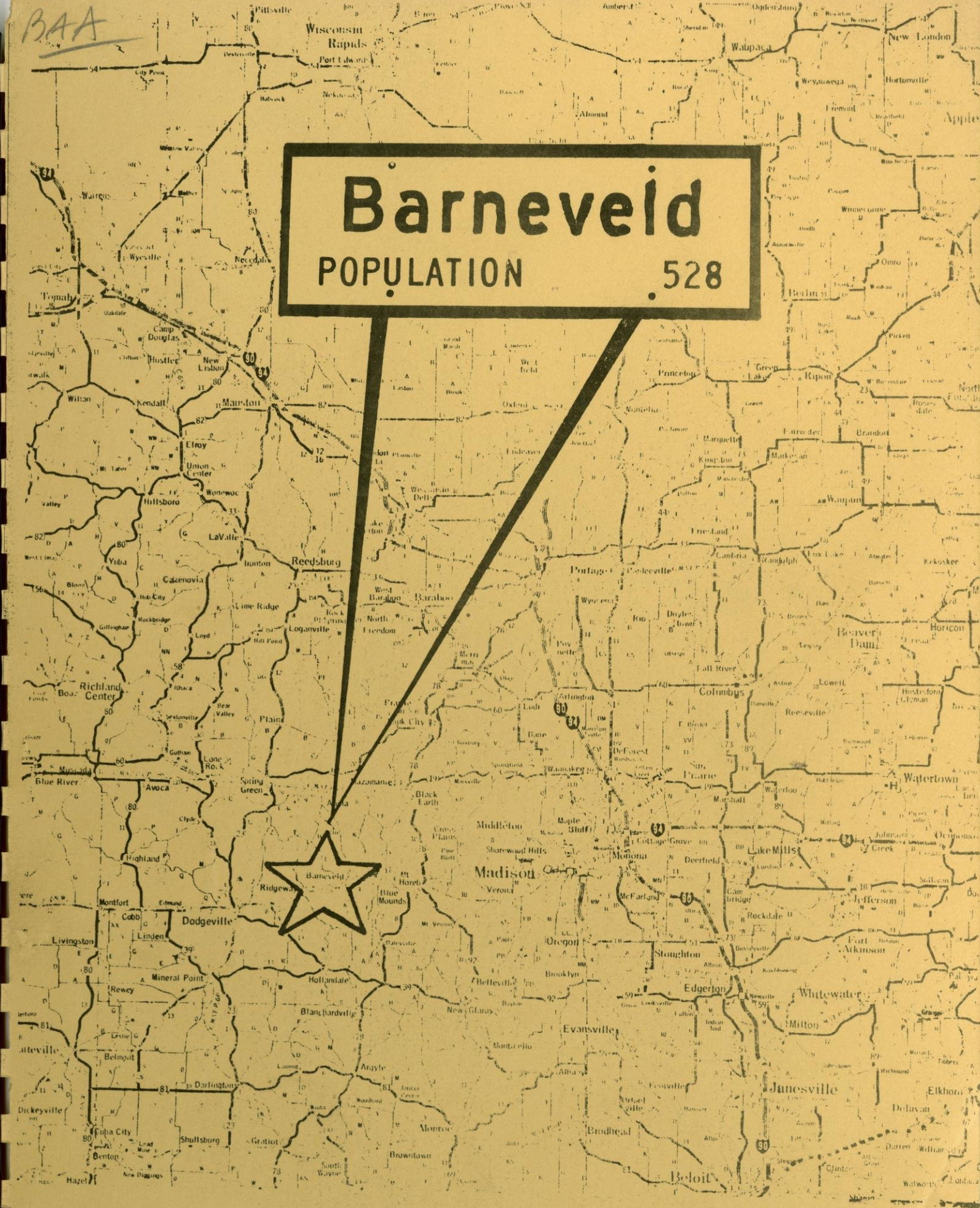
<http://digital.library.wisc.edu/1711.dl/Copyright>

The libraries provide public access to a wide range of material, including online exhibits, digitized collections, archival finding aids, our catalog, online articles, and a growing range of materials in many media.

When possible, we provide rights information in catalog records, finding aids, and other metadata that accompanies collections or items. However, it is always the user's obligation to evaluate copyright and rights issues in light of their own use.

BAA

Barneveid
POPULATION 528



Barnveid
POPULATION 258



BARNEVELD

AUTHORS

COMMUNITY

PROFILE

Sally Burke

Boyd Calvert

Jean Curmody

Paul Dlapak

Todd Eveland

Rene Gagner

Diana Kirschbaum

Glenn Lense

Jerry Houson

BY

FIFTH HOUR ENGLISH & SOCIAL STUDIES CLASS

Ann Swelland

BARNEVELD HIGH SCHOOL

John Throckmold

Mari Throckmold

BARNEVELD, WI.

Antonio Tschopp

JUNE 1, 1977

AUTHORS

Scott Archer

Eric Arneson

Mike Brennan

Pat Brennan

Holly Burke

Boyd Calvert

Jean Carmody

Patti Dimpfl

Todd Eveland

Rene Gagner

Diana Kirschbaum

Diane Lease

Jerry Monson

Rick Powers

Ann Swedlund

Bill Theobald

Jane Theobald

Mari Thielbar

Antonio Valadares

TABLE OF CONTENT

AUTHORS

Scott Archer

Eric Arneson

Mike Brennan

Pat Brennan

Holly Burke

Boyd Calvert

Jean Carmody

Patti Dimpfl

Todd Eveland

Rene Gagner

Diana Kirschbaum

Diane Lease

Jerry Monson

Rick Powers

Ann Swedlund

Bill Theobald

Jane Theobald

Mari Thielbar

Antonio Valadares

TABLE OF CONTENT

Many times students find normal high school courses irrelevant to their own existence. At the same time, many sources of information in a community go unnoticed and therefore untapped. Because of this, we decided to design a mini-course which would attempt to deal with this situation.

Introduction 1

the Community Profile. A combination of English and Social Studies skills would be utilized in compiling information regarding the Barneveld community. The selections herein contained are the result of this

History of Barneveld 3

Emotions fluctuated as this project progressed. Many students became very involved investigating and actually tracking down information, while others spent equal energy avoiding these unusual assignments.

Government 9

These were constantly revised to deal with changing time available, resource persons, and interest levels. These combined to form the basis for this project.

Business & Commerce 19

The profile has been a challenge and a trial to all of those involved in all we had hoped and attempted, yet we do not feel we have failed to achieve a small yet significant degree of success.

School 29

Only a fraction of those interviewed or surveyed have made it into the pages of this finished profile, but we want to sincerely thank the many members of the community who gave so generously of their time and knowledge to assist our search for Barneveld's personality and "roots." We hope you find our efforts enjoyable as well as enlightening.

Services 41

Beth Silenalt
Jerry Johnson

Organizations 51

Churches 65

Maps Surveys Graphs 73

INTRODUCTION

Many times students find normal high school courses irrelevant to their own existence. At the same time, many sources of information in a community go unnoticed and therefore untapped. Because of this, we decided to design a mini-course which would attempt to deal with this situation. The result was the Community Profile. A combination of English and Social Studies skills would be utilized in compiling information regarding the Barneveld community. The selections herein contained are the result of this study.

Emotions fluctuated as this project progressed. Many students became very involved investigating and actually tracking down information, while others spent equal energy avoiding these unusual assignments. Initial plans were constantly revised to deal with changing time available, resource persons, and interest levels. These combined to form the basis for this project.

The profile has been a challenge and a trial to all of those involved with it. We were unable to accomplish all we had hoped and attempted, yet we do not feel we have failed to achieve a small yet significant degree of success.

Only a fraction of those interviewed or surveyed have made it into the pages of this finished profile, but we want to sincerely thank the many members of the community who gave so generously of their time and knowledge to assist our search for Barneveld's personality and "roots." We hope you find our efforts enjoyable as well as enlightening.

Beth Gibault
Sally Johnson

The Brigham area was first settled in the early 1800's. At this time it was still part of the Michigan Territory. The first inhabitants lived in a little settlement located close to where the Cave of the Mounds was later discovered. Mining was the chief interest and the main attraction for people to settle here.

Agriculture took the place of mining around 1860, with wheat raising followed by other small grains and livestock in the next fifteen years. By 1881 the Barneveld-Ridgeway area had established itself as the leader in dairying in the entire county.

HISTORY OF

BARNEVELD

The first school was established in 1881, which was then occupied by the high school. The first class was graduated in 1923, with Stewart Wilson as principal. The school moved to its present location in 1947, with the establishment of Union Free High School, V.C. O'Well as principal.

Barneveld's population through the years has increased steadily while its business district has slowly diminished. Barneveld's peak of business was in 1935, when we had everything from 3 grocery stores to a chick hatchery.

In 1885, the Town of Brigham and the Town of Ridgeway were formed from the Town of Ridgeway. The Town was named after Ebenezer Brigham who was one of this areas first inhabitants and a very prominent citizen.

The Chicago and Northwestern Railroad installed a line in 1881, thus giving Barneveld businessmen and residents the ability to transport and obtain goods from other areas quickly and easily.

This area was first known as Simpsonville, and was later renamed Barneveld by Mr. Arbibson, the surveyor who laid out the railroad right of way.

Since that time, Barneveld has endured a very serious bout with Scarlet Fever in the fall of 1935 and 3 serious fires, the worst of which destroyed the Ben Davis store, with a loss of about \$15,00.00.

Since 1907, when the village was incorporated, Barneveld has grown steadily and now has reached a population of about 528.

*Book Review
Bill Thibault
Patricia Bunn*

The Brigham area was first settled in the early 1800's. At this time it was still part of the Michigan Territory. The first inhabitants lived in a little settlement located close to where the Cave of the Mounds was later discovered. Mining was the chief interest and the main attraction for people to settle here.

Agriculture took the place of mining around 1860, with wheat raising followed by other small grains and livestock in the next fifteen years. By 1881 the Barneveld-Ridgeway area had established itself as the leader in dairying in the entire county.

Barneveld was first settled by the Welsh with the Norwegians and Germans arriving shortly thereafter. Several English and Scottish families later inhabited the Middlebury area. Still later, some new settlers arrived from Switzerland.

The first school was located on the T.B. Watkins farm house, which was then occupied by the Richard Williams family. In the early 1900's a three-year high school course was added. The fall of 1922 brought a 4-year course to Barneveld. The first class was graduated in 1923, with Stewart Watson as principal. The school moved to its present location in 1947, with the establishment of Union Free High School, V.C. O'Neil as principal.

Barneveld's population through the years has increased steadily while its business district has slowly diminished. Barneveld's peak of business was in 1935, when we had everything from 3 grocery stores to a chick hatchery.

In 1885, the Town of Brigham and the Town of Ridgeway were formed from the Town of Ridgeway. The Town was named after Ebenezer Brigham who was one of this areas first inhabitants and a very prominent citizen.

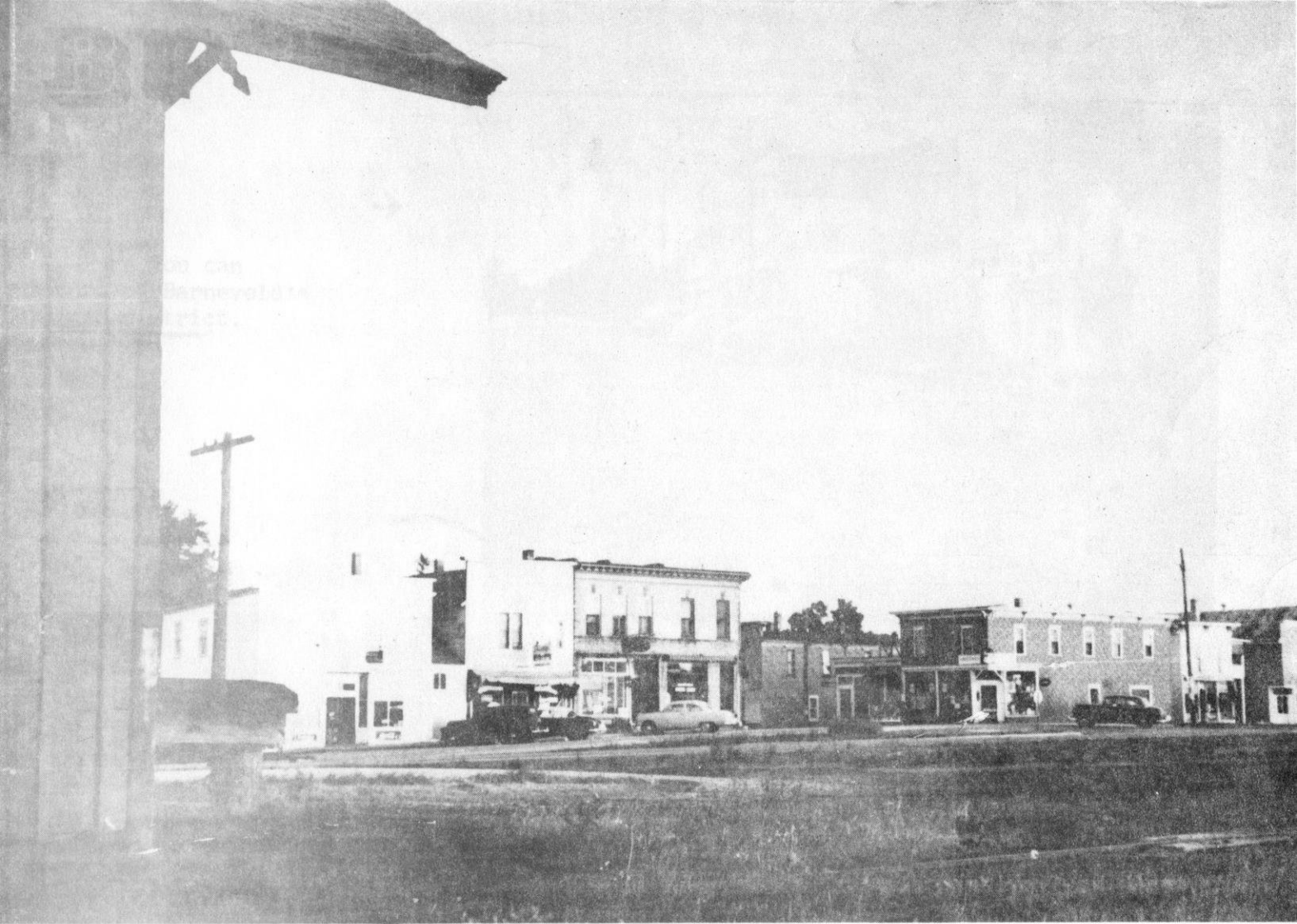
The Chicago and Northwestern Railroad installed a line in 1881, thus giving Barneveld businessmen and residents the ability to transport and obtain goods from other areas quickly and easily.

This area was first known as Simpsonville, and was later renamed Barneveld by Mr. Arbison, the surveyor who laid out the railroad right of way.

Since that time, Barneveld has endured a very serious bout with Scarlet Fever in the fall of 1936 and 3 serious fires, the worst of which destroyed the Dan Davis store, with a loss of about \$15,00.00.

Since 1907, when the village was incorporated, Barneveld has grown steadily and now has reached a population of about 528.

*Rick Powers
Bill Theobald
Patricia Bunn*



PICTURES OF OUR PAST

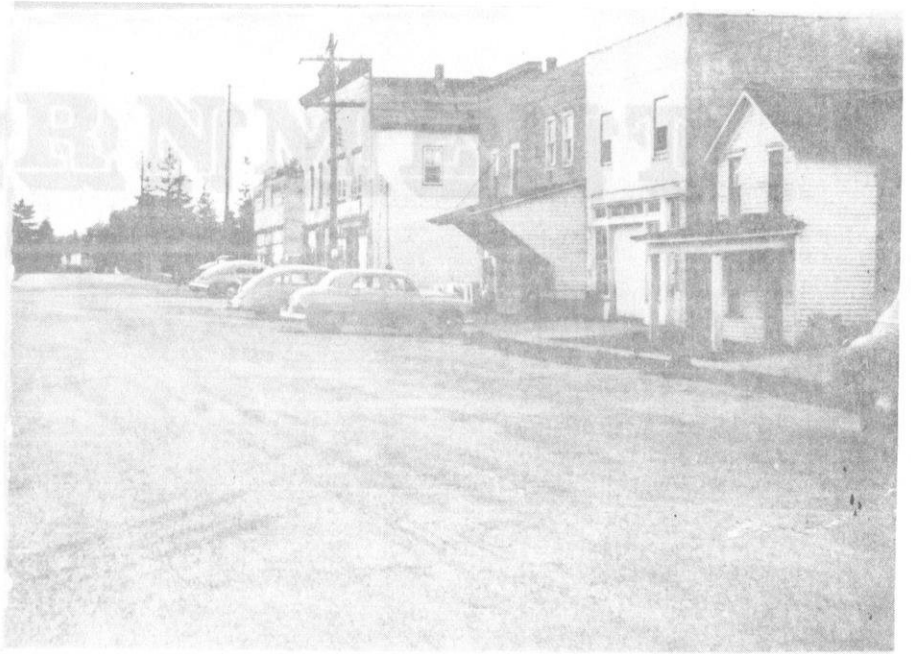
Above The
Barneveld
Business
District
as seen
in the
1950's



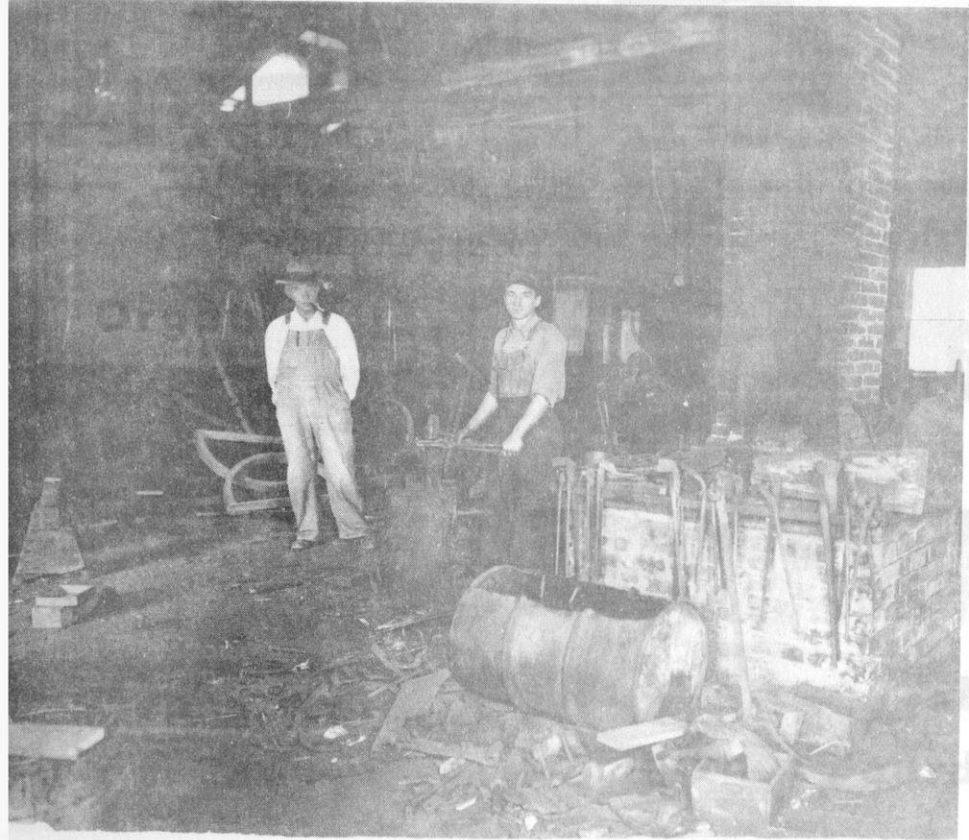
Left In this photo
you can see the old
railroad depot and
the water tower
just across highway
18-151

GOVERNMENT →

Here you can see part of Barneveld's Business district.



Village Board



Left Barneveld's Blacksmith shop - owner John Blaser on right

Steve Eveland

Village President

GOVERNMENT

Village Board



Town Board

Steve Eveland
Village President

On April 5, Barneveld, along with many other villages and towns throughout Wisconsin, held the elections for public offices. The mayoral race in Barneveld was probably one of the highlights of our area. Many of these office openings were decided on April 5th but Barneveld's mayoral race wasn't decided until April 11. This came about when the vote count came up with a tie of 100 votes apiece. The board then decided that the man chosen for town mayor would be decided by a coin toss. On April 11 at 1:00 our 2 village president candidates met with the other board members for the toss of the coin. Shelby Raisbeck chose tails while Steve Eveland represented by heads. After one illegal throw, the coin went up and landed upon the floor with the head insignia facing everyone who watched. This meant that Steve Eveland was our new Village President.

Steve was born in rural Barneveld in 1927. He was born in a large family of 9, The son of Bradford and Eva Eveland. He has lived in Barneveld all of his life and has been a member of the Village Board for over 16 years. He has been employed by the Quad County Co-op for over 30 years, delivering gas and doing repair work as a part of his job.

Steve now takes on the responsibility that our past mayor, John Koenig, firmly took care of for many years. His job responsibilities range from conducting meetings to finding answers for any problems in our community. He plans on keeping the Barneveld community on a solid foundation, to continue in the same direction of growth and prosperity. He feels that our village board has done a fine job of keeping taxes at a minimum and yet they have made many improvements such as the water tower, new wells, sewage plant, and keeping the streets and curbs in fine condition. He also mentioned the plans of building a new fire station and town and village hall combined. The money from the budget is used for most of these improvements, and is also used for the salaries of village employees.

Mayor Eveland said that so me of the problems our community has are keeping the village operating on a fair budget while improving and keeping dogs tied and not letting them run freely. When asked whether he thought Barneveld had a high tax rate for the amount of services offered, he firmly stated no, and said that it was comparable with the other villages our size. He feels that to promote more business, Barneveld must expand and get more people from the city.

There are 6 members on the village board plus the village President. Each board member serves a 2 year term and must be 18 years old to run for office. To run for the board a person must be nominated at the caucus and win, not tie, in the election. Mayor Eveland feels that our community must be satisfied because they elected the same board back and there aren't too many people who attend the meetings with any type of complaints. He also feels the board is a conservative group that will move ahead on any project that will improve our village. The board is always trying to be aware of any federal or state aid available for any of our community projects. A good example of this is when the village applied for Federal aid for the new fire station and was granted the full amount, \$ 330,000.00

Barneveld is a community that is rapidly expanding with new house plots being sold throughout the community. With Barneveld expanding in all directions, our town board will acquire much more importance. With the new Village President and our very experienced trustees, Barneveld will be allowed to expand at any pace with many improvements being added by the board to make Barneveld a much better place to live.

Todd S. Eveland

TOWNBOARD- JOE RYAN

Joe Ryan has been a member of the board representing the northern part of Brigham Township for one year. He attends each meeting on the first Wednesday of every month. He also attends special meetings that include township legislators at our state capital. Joe is the newest member of the board, taking over for Clarence Lenher who moved away from the township.

The Board also consists of four other members including Chairman Dave Reeson, Clerk Norman Duesler, Treasurer Tom Hodgson and the two Supervisors, Joe and Clinton Roberts. They all are serving two year terms, and have met the board's requirements of being tax paying residents of our township as well as being above eighteen years of age.

The main problems that face the board are the occasional line fence problem between neighbors which must be settled by the board. The most recent problem solving dilemma has been the restriction of building permits to save crop land.

The budget money is basically used for the school, road improvements, equipment and labor. Joe felt that the people feel the taxes are high because rural land values have been rapidly increasing. There is concern about accessing farm land at its use value. But even though the taxes are high the people of the township seemed quite satisfied with the job the board has done.

The future plans for the board are to finish black topping all rural roads that need a new finish. They also plan on making all of the finishing touches for the moving of the old town hall to the new complex which is presently being constructed.

Todd S. Eweland

Interview - John Carr

John Carr has been a member of the Barneveld Village Board for two years and was recently re-elected to his second term. As a village board trustee, he takes part in the responsibility of looking after the assets of the community. Other duties of the board include establishing the taxing and mill rate and raising money to finance the operation of the village.

Mr. Carr is uncertain as to the origin of the Barneveld Village Board, but said that the Village Board concept is sanctioned by the constitution of the State of Wisconsin. Therefore, Village Board and the rules and laws that regulate their function, evolved out of the early development of the state's constitution.

At the present, there is a major issue facing the board, that of residential expansion. In the past the village itself has always made a major contribution to the development expenses of the developers. **how**, due to the rapidly rising cost of sewer lines, water lines and utility services, the board is strongly looking at what position they should take on development and expansion in conjunction with the contractor. They are basically taking the position that the contractor should shoulder the bulk of the developmental costs which includes: sidewalks, streets, sewer, curb and gutter, storm sewer and water and build those costs into the sale price of the lot that they sell.

This also presents a problem to the community. Does Barneveld want growth and expansion? Is bigger better? There are people who feel a major population growth would be a step forward for Barneveld and those **that** feel an explosive population growth isn't what the community is looking for. The total feeling of the people hasn't been sorted out yet.

Another problem that Mr. Carr sees in the community is vandalism and what he likes to call "weekend rowdiness". This includes vandalism, excessive speeding and noise and general law breaking. He feels every community has its of these types of troubles and Barneveld is no exception. When asked how the community itself feels about the board, Mr. Carr said he had "mixed feelings". When a vote is taken on an issue, a popular decision will usually be somewhere between a 60-40

spot. Either 60% of the people are for or against our issue or 40% are for or against an issue. So, he said, "We are constantly not pleasing someone. But he hopes that the community feels they are doing an acceptable job. He also would like to take this opportunity to say that the community itself makes a very minor contribution to the operation of the board. The board meetings are the first Monday of every month, and it is rare for any citizen, outside the duty bound members, to even show up. The community is anxious to gripe and complain, but never come forward to express an opinion. He said the only time the board members hear from them is through an indirect comment, passed by a neighbor in the form of a complaint over something they did.

We were interested in the functions of the board and one of our questions was about the budget. The village board has a general fund which they replenish annually through a tax levy and mill rate. The bulk of this money then goes to salaries and wages and general maintenance of the village. He also thought it important to stress that they do not tax for utilities. Our utilities are self-supporting and are financially very healthy and tremendously efficient. He feels that with out expanding what we have, our utilities could easily service double our population. If this were to happen, theoretically the cost per person would decrease. The question of taxes also arose. Mr. Carr feels that the property tax structure is reasonable and it is possible, with a modest expansion in population, that taxes could decrease. The board tries to keep costs down and be efficient, but he feels that government by it's very nature is the most inefficient business entity in system. Even at the local level, it is plagued with inefficiency.

Our group was also looking at the question of more business in the village. Again, Mr. Carr feels there is much conflict in this area. How much business does Barneveld want and what types? He thinks that the village should not encourage just business in general, but should be very careful as to what particular types of industries they do encourage. Some types of business are just not attractive and wouldn't improve the village. Such would be a manufacturing plant with a low wage scale, which would employ a large majority of people right at the poverty line. Mr. Carr feels this would bring tremendous problems to the village. He also said they wouldn't want any type of industry that would contribute extensive pollution and pose a threat

to our local environment. Many industries are not acceptable on the basis that our sewage disposal system is not set up to handle the inflow of certain waste products. Industries such as one dealing with milk or milk products, or a large slaughtering house would cause our current system to go berserk. The disposal system we have would require major expansion to be able to accept the suspended matter in the waste products of these industries. This also would require a great deal of money. Mr. Carr said that he is in favor of light, clean industry, mainly because this is all that Barneveld is set up to handle.

Our next interest was related to the inner cooperation of the board. Mr. Carr said that the board members work very well together but has one criticism. He feels there is too much unity. Almost every issue is passed on a unanimous basis. He thinks there is enough diversity between members that on some issues, when a vote is taken, there should be a bit more dissention and more discussion involved.

In closing, Mr. Carr would like to remind the people, "It is not the board's position to be doing things for the village, but rather that the village has to do things for itself. If the community decides it wants something, it's up to them to tell the board, then it is the board's job to implement it and see that it is carried out legally within the rules and laws of the state of Wisconsin."

Village Board
Pat Messinger

Pat Messinger has lived in the community 19 years. She's been appointed to the board as clerk where she takes the minutes at board meetings and types them up as well as doing any correspondence and telephoning necessary. As the treasurer she also figures out the tax roll, and collects the taxes from the people.

The board has done things for the community like build the water tower, the sewer system, the curb and gutter and a new well. Mrs. Messinger says they also need a community center.

Plans for the future include building a new six stall fire station with a town hall, a meeting hall and a small kitchen. It will be located behind the Catholic Church.

The only problem the community has right now according to Mrs. Messinger, is that the DNR thinks that our sewer system isn't doing the job it should.

Out of all the taxes she collects, 50% goes to the school, the village keeps a little of it to pay Virgil Jabs and Jim Lease for maintenance services. The remainder goes to the state and the county for taxes.

The village board has just started a new planning commission of seven business men. They have been trying to get some industry in the community. The need is for smaller ones that wouldn't strain the sewer system too much.

Scott Archer

Bill Brennan

Some people feel that a community as small as Barneveld wouldn't have much business and commerce. However we have proven them wrong. There are many businesses in our community such as Jerry's food and Locker, Barneveld State Bank, Co-op, Bars, Emplement Dealers, Barneveld Motors which services and products to fill the needs of the people in the community. In our interviews we attempted to find out how these business are affected by a small town and how the community inturn helps the businesses.

Barneveld Motors gets 50% of their business from Barneveld and the other 50% from surrounding areas such as Dane, Grant and LaSalle Counties. Mr. Myers feels that his business is prospering but he said, "The business depends alot on cars trade and the economy, so it varies." But the business grows as far as a total dollar volume. This is partially due to inflation. Mr. Myers also feels that the little cars will be coming back strongly because of economy. This should, in turn, help out American Motors.

There are many different things which affect the American Motors business. When asked if the fact that Barneveld is a small town has any effect on business, Mr. Myers said, "No because we are close to a highway, 18-151, and also close to Madison." So this does not effect our business, such as the drought. When farmers would have bought a car they probably ended up buying feed instead.

The best years for business were '73 and '74 when little cars were strong and selling for economic reasons. The next year gas was plentiful and not priced too high, so people went back to buying big cars again, causing their sales to decrease.

Right now Barneveld Motors spends about \$1,000 a month on advertising through newspaper, radio and television.

Mr. Myers said that they are presently thinking about taking on the Chrysler Corporation line along with American Motors. This is in the planning stages and has not yet been taken care of. The business will then definitely expand if they do with the Chrysler corporation.

Barneveld Motors

Since the invention of the automobile there has been a drastic change in everyone's life. When we used to go 10 miles during a period of time we now could possibly go 100 miles. This change in our life brought about excitement, mobility, and versatility. Another change centers around business dealing with the automobile. Barneveld Motors is one such business which was started in the 1930's as an automobile dealership.

Mr. Bill Myers has been with Barneveld Motors for 22 years, since 1955. As president of Barneveld Motors, Mr. Myers has many duties. He generally makes the decisions and plans for the next day's business. He also has responsibilities around the office.

Barneveld Motors gets 50% of their business from Barneveld and the other 50% from surrounding areas such as Dane, Grant and Laufayette Counties. Mr. Myers feels that his business is prospering but he said, "The business depends alot on farm trade and the economy, so it varies." But the business grows as far as a total dollar volume. This is partially due to inflation. Mr. Myers also feels that the little cars will be coming back strongly because of economy. This should, in turn, help out American Motors.

There are many different things which effect the American Motors business. When asked if the fact that Barneveld is a small town has any effect on business, Mr. Myers said, "No because we are close to a highway, 18-151, and also close to Madison. So this does not effect our business, such as the drought. When farmers would have bought a car they probably ended up buying feed instead.

The best years for business were 73 and 74 when little cars were strong and selling for economic reasons. The next year gas was plentiful and not priced too high, so people went back to buying big cars again, causing their sales to decrease.

Right now Barneveld Motors spends about \$1,000 a month on advertising through newspaper, radio and television.

Mr. Myers said that they are presently thinking about taking on the Chrysler Corporation line along with American Motors. This is in the planning stages and has not yet been taken care of. The business will then definately expand if they do add on the Chrystler corporation.

An automobile is a very important thing in our lives. We are very fortunate to have Barneveld Motors Corporation right here in town. Also if they add on the Chrystler Corporation they will expand business in the community which will of course help the people in the community out.

Mari Thielbar

Barneveld State Bank

Ted Arneson

The Barneveld State Bank was organized June 1, 1896. The bank was started by a man who came from Jones Valley which is in our school district. It was a private bank named after him, Jerome J. Jones, and was operated on a sight near where the Masonic Hall is now located. Everything had been successful so they incorporated it as Barneveld State Bank in 1904. It was then built on the corner where it is now. Mr. Jones continued to operate it for 35 years. Then Ted Arneson's father joined the bank because he had some training and helped run the adding machines. In 1940 Ted Arneson started to work at the bank with his father. That same year Mr. Jones sold the bank to the Arneson family and Ted Arneson has worked there ever since.

Mr. Ted Arneson has been involved with the Barneveld State Bank for 31 years and has been president for 17 of those 31 years. He is a very active person in the community and has been so ever since high school. He graduated from Barneveld Public High Schools in 1940 as Valedictorian of his class. During school he was involved in basketball, class plays, chorus, band, school paper editor and other things. After high school he attended the University of Wisconsin from 1941-1943, and then went into the U.S. Army Corp of Engineers until 1946. He then went back to the U.W. until 1948 when he started working at the bank as cashier and director. Mr. Arneson also worked at the bank the summer of 1940-1941 and then part time until 1948 when he started full time. Mr. Arneson was elected president July 1, 1962.

Mr. Arneson has many duties as president of the Barneveld State Bank. He conducts the monthly board meeting, checks to see that everyone does their jobs in the bank correctly and is part of the loan committee. His main responsibilities are to keep the bank assets and liabilities balanced by making investments. Everyday he watches the government bond market and invests the bank's money so that the bank can pay interest to their savers and make a profit to pay dividends to their stock broker. Mr. Arneson usually is busy with the money markets in the morning or early afternoon because the markets close later in the afternoon.

Last year, 1976, was the Barneveld State Bank's 80th Anniversary.

During those 80 years the bank has been prospering quite rapidly. The deposits have gone up 1 million dollars in the last year which is a 10% growth or increase. The deposits from the area are 10 million dollars. These include local business from Barneveld, Blue Mounds, Ridgeway, Hollandale, and the county area.

In the future he plans to continue to operate the bank as a small town, independent, commercial bank. "The future really depends on what the needs of the people in the community are, and also what happens to the banking business nationally," commented Mr. Arneson. He also feels that the community will expand and as a result the bank will also expand.

There are conditions which do affect the banking business, among these, weather conditions. The drought affected the bank because the farmers couldn't afford to produce crops for their animals. The bank provided them with money, which in turn affected the business of the bank and the farmer. Also the ice storm affected business because farmers were borrowing alot of money for generators. Three years ago was a very good year for community business because the farmers had good crops, stable prices and the business was prospering.

When asked if the fact that this is a small community hurts the banking business, Mr. Arneson replied, "No, in fact it helps our bunisess. It makes it easier for us to do business because we know the people."

The bank employs 16 people, including those who work in the bank, and those who care for the bank. One and a half percent of total assets are spent on advertising. The services offered are a place for people to put money in interest or checking and savings accounts. Also investment certificates, individual retirement accounts, safety deposit vaults and bonds, loans for financing, and advice are offered. Mr. Arneson said, "our services are that of a lender: what we take in as a service to people for savings, they lend out as a loan."

The Barneveld State Bank has many services to provide us with and is very successful in its business. The community always helps the business prosper so if we satisfy our businesses then in return we should get good, Beneficial business.

Mari Thiellor

Bobcat

The Bobcat dealership has been located in the Barneveld area for over 14 years. The dealership was started 14 years ago by the late Tom Arneson and was sold to Mr. Christenson of Darlington who already had a main office located there. The Barneveld dealership then became a branch office of the Darlington office. The Barneveld Bobcat dealership is estimated by its employees to be the oldest dealership in the world.

The dealership in Barneveld has 2 full and 1 part time employees. Jim Owens is the shop manager and parts manager. The dealership in Barneveld may expand with the chance of a new building being constructed in Barneveld. The Christenson Bobcat service serves 3 counties including Iowa, Green, and Lafayette. They also have made sales in Illinois and Iowa.

Bobcats have various uses including farm work and contract work which is probably its biggest use. The sales and rentals of Bobcats depends mostly upon the weather. During a time of good weather the business is bad, but when bad winter weather strikes, the Bobcat business really starts moving. The service and repair work is done at the shop adjacent to the office and parts room. Christenson Bobcats also sell trailers, Buckets and Forks. Most of the sales come from bobcats themselves.

The Bobcat sales dealership is one of the many businesses in Barneveld with great importance. Barneveld's future will depend upon such small businesses that promote any kind of substantial growth in Barneveld. Bobcat sales may not be as large as some of the other businesses but it does play a substantial part in Barnevelds expanding business world.

Todd S. Eweland

CO-OP

If you need feed, fertilizer, gas or any other farm supplies, the Quad County CO-OP would be more than happy to serve you.

Since 1919, fifty-eight years ago, the CO-OP has been growing in business and will continue to grow in the future.

About half of the people from Barneveld come to do business at the CO-OP and about the same from other areas.

The CO-OP, even though it is in such a small town, hasn't lost any business. People from all around the area come to buy products from the CO-OP. The CO-OP has many things to sell, but the most prosperous is feed and pet food according to money figures. "The drought as in any other business hurt the CO-OP in selling their goods," says Ken Vlasick who has been working at the CO-OP for two years. He is the manager with eight other employees.

About two-tenths of the total budget is spent on advertising. So if you see an advertisement you know the Quad County CO-OP of Barneveld is hard at work.

Diane Geese

Barneveld is one of the very few cities of this size that has a grade school and High school system. Most towns of our area are consolidated with larger communities such as Mt. Horeb or Dodgeville. This is an important factor because the school makes up a big part of our community.

The new addition to the school facilities has grown to become a real asset to Barneveld. The school and growing community involvement is apparent through more sports programs, vocational classes and Holiday programs. With these opportunities the school has also provided working programs for younger people.

The focus of our study is to show how the school works, and a little bit of the history of the school.

Duane Whittier

Barneveld Public Schools District Administrator

Mr. Whittier is an individual who is interested in the school system and is working to improve it. He is currently the administrator of the Barneveld Public Schools. He has a lot of information about the school system and the operations of the school.

Mr. Whittier traveled around and before coming to Barneveld. His background includes positions as teacher and supervisor as well as an administrator.

He believes the outlook for Barneveld Schools is good. The enrollment is down a little but it's been very steady. As for consolidation, he says the philosophy of the Department of Public Instruction is to not propose any further consolidation. He also mentioned the new highway and five stations the school district has increased.

SCHOOL

The money for the school comes from many different areas. About 40% comes from state aid in what is called shared costs. Another 30% comes from local tax revenues. The other 30% comes from various places: federal funding and other special state aids.

His role as school administrator makes him directly responsible for all school personnel and students. The board tells him what to do. He said that on policy issues, he incorporates the board's views or he incorporates his own and he tries to do everything that is expected of him. He also said that most of the time he has to deal with the guidelines for example, with student and teacher handbooks. The board has to approve these before they become policy.

As for the hiring of teachers, the administrator is a key person. The first step is to contact certain teacher placement agencies. Then the applications received are screened and the qualified applicants are contacted for an interview. They are interviewed by Mr. Whittier and he makes the final recommendation to the board. They vote on whether to hire the person.

In looking ahead for any addition to the school, the outlook seems very good. Though still in the planning phase, talk of building a new stage for the drama department, and of building an addition to the gym to make a weather room have been brought up. There has also been a discussion about building a new athletic field. Plans for that project

Duane Thielbar

Barneveld Public Schools District Administrator

The school is an institution and it takes alot of individuals to keep it running smoothly. One of these endividuals is the administrator. Our present administrator, Mr. Thielbar gave us alot of information both about his background and on the operations of the school.

Mr. Thielbar traveled around alot before coming to Barneveld. His background includes positions as teacher and counselor as well as in administration.

He believes the outlook for Barneveld Schools is good. The enrollment is down a little but it's been very steady. As for consolidation, he says the philosophy of the Department of Public Instruction is not to promote any further school consolidation. The near future looks good indeed and with new developments in the community, such as the new highway and fire station the school should increase in size.

The money for the school comes from many different areas. About 40% comes from state aid in what is called shared costs. Another 50% comes from local tax revenues. The other 10% comes from various places; federal funding and other special state aids.

His rate as school administrator makes him directly responsible for all school personel and students. The board tells him what to do. He said that on police issues, he incorporates the board's views on philosophies into his own and he tries to do everything that is expected of him. He also said that most of the time he has to deal with policy guidelines; for example, with student and teacher handbooks. The board as to approve these before they become policy.

As for the hiring of teachers, the administrator is a key element. The first step is to contact certain teacher placement agencies. Then the applications received are screened and the qualified applicants are contacted for an interview. They are interviewed by Mr. Thielbar and he makes the final recommendations to the board. They vote on whether to hire the person.

In looking ahead for new additions to the school, the outlook seems very good. Though still in the discussion phase, talk of building a stage for the drama department, and of building an addition to the gym to make a wrestling room have been brought up. There has also been a discussion about building a new athletic field. Presently that proposal

is pretty grim because the price is quoted at \$3,000 an acre. The school district right now doesn't have the money.

When asked about the cause for the nonrenewal of open campus, several reasons were cited. First of all, the school is in a legal position where it is responsible for the students during school hours. If a person gets hurt off school grounds while on open campus, the school is held responsible. Secondly, there is a negative attitude toward open campus in the community. This is a traditional feeling expressed that during school hours kids should be in school, not out roaming the streets. He explained that the same feeling is expressed toward the present work-study program.

The outlook for the honor-pass system, currently used, is good. It allows honor students to have freedom on school grounds while not in class.

Many students in the high school would like to have a lounge. But space is a big problem. There really aren't any rooms available. Mr. Thielbar expressed interest in helping the students. He suggested more input from the Student Council. He also suggested that the courtyard in the center of school be developed into a picnic area. This could act as a lounge for many students.

The outlook for Barneveld School does look good and with more developments both in the area and in the school, education will continue as it has in the past.

Mike Brennan

Barneveld School Board

Some Valuable information was gathered from Dale Theobald. President of Barneveld School Board on what his job involves.

There are 5 people on the school board, their positions are President, vice President, Clerk, Treasurer, and a representative. The President, Clerk, and Treasurer are the only ones that can sign papers, checks, ect.

The board meets twice a month, every two weeks, unless there is a special meeting then they meet when necessary, They usually start at 8:00 p.m. with meetings lasting to 12:00 O'clock. The issues usually covered in a meeting are the budget, payrole and any matter that comes before the board. Some of the biggest decisions that the School Board deals with are the budget, dicipline for students, Teacher request, and other general school business.

Plans for the future are to insulate, and continue fixing up the school building, to find ways to cut vandalism down and to purchase land or a lot for the Building Trades Program.

Mr. Theobald was asked to run by a group of people, "There was no one else in my area that would run for School Board." He has been on the school board for the last 10 years. His duties as President of Barneveld School Board include conduct meeting signing checks, attending special mettings at other schools and seeing that things get on the agenda for future meetings.

With a member from each district of Barneveld we get the best representation possible on the school board.

School Board
Mary Ann Myers

Mary Ann Myers, a former school board member, was interviewed to give us insight as to what her role was and what she personally wanted to get out of being on the School Board.

Mary Ann served 5 years on the board. When John Benson resigned she was asked to take the position in April, 72. This meant she would be on it until the election which was held in July. She ran for the position and was elected.

I asked her what effect being the only woman on the board had on her. She replied that it had little effect, but she admits times where her point of view on an issue was completely different from the other members. She was also quite definite when she said that the board was not prejudiced against her as a woman.

Mrs. Myers stated that she had some personal goals that she wanted to get accomplished while serving on the board. The first one was to make the public aware that there are a lot of very dedicated teachers who give much more than are required of them. She felt that the public should learn to treat their teachers for what they're worth.

Another item she wanted to see improved was communication between the community and the school.

She also stated that Mr. Thielbar works closely with the board, and even if his views were different from theirs he would carry out what the board wanted him to do.

Mrs. Myers has held positions as both treasurer and Vice President and explained some of the duties of these jobs. The treasurer is bonded and receives state aids and tax revenues from the local municipalities. This money is banked. The treasurer is therefore responsible for this money. The Vice President fills in when the president is gone, carrying out his duties.

Mrs. Myers was also asked about what projects were undertaken while she was on the board. The biggest project was the large building addition to the school. She said a lot of headaches resulted from it, but the end product was worth it.

Another major project was the bus barn. She felt this was very much needed to protect the buses from vandalism. The land purchase to build another athletic field was a third project. Though it never passed, it's

possible that it will in the future.

We also wanted to know how much of a time consuming job it is being a board member. She replied, "It was what you made of it." She went on to say it could be made into a full-time job. But one could get by with just a few hours of preparation between meetings.

Under her present family condition she just didn't feel she could devote enough of her time to the job.

Finally I asked her if she would ever consider running again and she replied, "Well I wouldn't rule it out." She went on to say that "it's usually a thankless job but it's very interesting. You also find out that you can't accomplish everything you set out to do. But it does leave you with a certain satisfaction."

Mike Brennan

Mrs. Skinroad - Teacher

Mrs. Skinroad was interviewed about the time she spent in Barneveld and how it changed during those years. She was chosen because she has been involved in this school system for eleven years and we thought her statement would be helpful as an eyewitness to Barneveld High School's history. The following article was written based on her answers.

The first school in the village of Barneveld was built in 1883. It was a frame building built on the same spot where the present building now stands. The first high school class that graduated here was in 1923; there wasn't a regular high school before that. The students used to spend three years in Barneveld and then they had to go to another school to graduate.

When she just came here eleven years ago, the building wasn't as big as it is now, but she started teaching in the same room she is teaching in now. At that time the building had alot of open spaces which made it common to see a cat or a dog in the halls during class time. In the year that she came, Mr. Benson was the superintendent and he decided to separate the Junior High from the Grade and High School. During the first four or five weeks she had to work with her own ideas before the books came, but she had all the material that was necessary to teach social studies.

The way she teaches is about the same as she used to ten years ago, except that the students now have more choice and freedom of speech. Students from ten years ago come to visit her and she feels pleased when they say how important all those things she taught them are. She feels that the students nowadays aren't so prepared as they were ten years ago. At that time all the class would come to school prepared and now she expects four or five to do the same. She attributes this to the modifications in teaching during the years.

Antonio Gabriel Valadous.

Mrs. Vinje - Teacher

Mrs. Vinje, well-known school teacher of Barneveld, first started teaching at a rural school about four miles from Blanchardville named Hanson-Claire School. She taught there for four years and had 28 students in grades 1-8.

Mrs. Vinje has taught in Barneveld for 29 years and she will teach one more year before retiring. The grade she teaches now is a real challenge. "They're a peppy, energetic group of boys and girls." They have their share of problems but none are too big that she can't handle.

She often sees the students that she has taught and have graduated from school. It is very embarrassing when they will come and talk to her and she cannot remember their names. But after talking to them awhile she is able to remember.

After many years of teaching she has noticed that she has to use more discipline. "Students are more rowdy and have to be watched a little more than years before. They're just an entire different breed of children."

Along with teaching she is active in many clubs. She belongs to the Retired Teachers, Church Group Homemakers, has been a 4-H leader for many years, and has taught Sunday School for a number of years.

Mrs. Vinje's styles of teaching have changed from year to year. She taught 7th and 8th grade until 1965, and then started into Title I teaching. She enjoyed working in the Reading Center because the students that came to the Center wanted to be helped. She likes to take credit for starting the first Elementary I.M.C. through Title I materials. She also started the annual Spelling Bee, where 5 through 8 grades compete to see who was the best speller in their class, compete for school championship, then go on to the District meet.

While Mrs. Vinje has taught in Barneveld, the school building has gone through many changes. The rooms in the west side, the big blacktop playground, all the lower level, the rooms in the upper level ... have all been added since she has been here.

For the Bicentennial Mrs. Vinje, Mrs. Brennan and her classes worked on a quilt with 334 names of area people in Barneveld. Right now the quilt belongs to Bev Moyer. Her grandfather won the quilt on a drawing and gave it to Bev.

The public services are those that are provided to the community. These services are provided to the community through the public sector. Some of these services are federally funded, but some are not. Some are provided to the community like the fire department, police and library. The type of services is related to the needs of the community. Therefore, as the community changes, the services will also change.

SERVICES

The public services are those that are funded out of the public's taxes. These include such services as the fire department, library, police protection, post office, and Iowa county Social Services. Some of these services are federally funded, like the post office, while some are locally funded, like the fire department, the police and library. The list of services is related to the need of the community. Therefore as the community expands, the services will grow and improve.

The fire department is the largest of the public services, the most that is allowed by the township fire department. Bud Evans is the fire chief.

The department offers fire protection and rescue work for the people of Barneveld and surrounding areas. They also hold social events throughout the course of the year.

The training needed for the fire department is a 7 week Vocational school training program a year in advance. The department itself has a 2 hour training period every 2 weeks for the department members. Extensive training is needed for the rescue squad. Firemen also have to be between the ages of 18 and 55, physically fit and socially alert to qualify for the department.

All members of the fire department clean and maintain the equipment used for fighting fires.

The policy that runs the fire department comes from the Village of Barneveld and Town of Brighton. The men work about 21:00 an hour for fighting fires.

When there is a fire call, all calls go to Iowa county sheriff's office. The firemen are alerted by radio receivers in their homes. The trucks are equipped with local base radios and sheriff's office receivers in for direct contact with the sheriff's office and other members of the force.

The new equipment that the department is getting is a \$345,000.00 station that is being built on the side of town. We are also getting an ambulance for Barneveld and the Brighton township.

Reed Gagner

Barneveld Fire Department

What has 52 legs sprays water and hates fire? You guessed it! It's the fire department. We found out some interesting information through an interview with Bill Arneson about this organization.

The Barneveld fire department has 26 men on the force, the most that is allowed by the Barneveld fire department. Bud Evans is the fire chief.

The department offers fire protection and rescue work for the people of Barneveld and surrounding area. They also hold social events throughout the course of the year.

The training needed for the fire department is a 7 week Vocational school training program a year in advance. The department itself has a 2 hour training period every 2 weeks for the department members. Extensive training is needed for the Rescue squad. Firemen also have to be (between the ages of 18 and 55) physically fit and mentally alert to qualify for the department.

All members of the fire department clean and maintain the equipment used for fighting fires.

The money that runs the fire department comes from the village of Barneveld and Town of Brogham. The men make about \$3:00 an hour for fighting fires.

When there is a fire call, all calls go to Iowa county sheriff's office. The firemen are alerted by radio receivers in their homes. The trucks are equipped with local base radios and sheriff's office receivers in for direct contact with the sheriff's office and other members of the force.

The new equipment that the department is getting is a \$345,000.00 station that is being built on the edge of town. We are also getting an ambulance for Barneveld and the Brigham town-ship.

René Gagner

Law and Order

Law and Order is most essential thing in any town or community. State and Federal laws that are made have to be carried out all over the world. Even in Barneveld the laws have to be followed.

The duties of a policeman in Barneveld are to keep law and order in town. There are no set hours for the offices to follow. Weekends are when they are most needed, especially Friday night.

To become a police officer you would have to go to school for 13 weeks. The paperwork consists of keeping records of the citations that are issued.

The biggest problems in town are vandalism and speeding. The people between the ages of 18 and 30 are the ones who commit the majority the crimes. Most of these crimes could be stopped by cracking down on a few more violations. A full time policeman could be a big help in the prevention of crimes.

Albert Miller Barneveld's town policeman has been serving the community for 15 years and enjoys his work. He is married and has no children. He is doing a fine job in keeping ~~peace~~ in our town and community. Law and Order are being enforced in town so we all have a safer place to live.

Jersey Morrison

Barneveld Library

In 1955 the Barneveld Women's Club decided that they should have a library. They started getting books from the population, donated books and they set the library in the building where the fire station is located now. In 1958 the library was incorporated under the Billage of Barneveld and started following the laws of the stake as an incorporated library.

The library was becoming a place where everybody would go to meet people and there wasn't enough room for the people or for the books so they decided to move. Mr. Ausburn owned the building where the building^{now is.} But when they talked to Mr. Ausburn he decided to donate the building instead of selling it, because he really had no use for it. That's why it's the Ausburn Memorial Library.

The library is managed by a board whose members are appointed by the Villiage Trustees. The members are Barbara Arneson president and secretary, Louis Arneson secretary, and the members are Ruth Stenseth, Aletha Myers, Margaret Twiton, and Gladys Arneson. They have 3 year terms and the trustees apoint 2 new members every year.

The library has 1109 adult boods, 871 juvenile books, 10 periodical books magazines, 3 weekly papers, and also encyclopedias. There is a great variety of boods. Only about 10 people use the library frequently (every week), but there are more than 500 people that have a library card which is necessary to borrow boods from the library. The people who use the library the most are the adults and elementary children. Mrs. Parks the librarian has plans to attract people to the library, by publishing articles in the ahopper about their now books. They aplyed for a grant, the same one which the fire station already got. They intend to build a new building in the same place. It will be bigger and also have a community room where meetings could be held.

Antonio Gabriel Valadary.

POST OFFICE

Since Barneveld is a small town in Wisconsin, the Post Office is a very important link for communications with the rest of the world. Postmaster Bill Brennan was interviewed and gave a lot of information about the Postal system.

Jobs in the postal system are acquired by applying for the position that is vacant. In the old system, a person seeking a job would take a civil service test for the vacant job. The top 3 from the test are interviewed and one is selected from them.

Acquiring jobs in the new postal system is somewhat different. For the hiring of lower-level jobs the procedure is as it has been in the past. But for jobs in administration and management, existing employees of the post office can apply, and top candidates will be interviewed with one selected from them.

Barneveld has five people employed at the post office. First there is the Postmaster. The postmaster at Barneveld does most everything including; managing, clerking, postal distribution as well as working at the window selling stamps and various other items. Secondly, Barneveld has two part-time clerks, whose duty is to sort the mail and sell postal material. Next there is a rural carrier, who sorts the mail for the rural route and then delivers it to rural boxes. Last there is the substitute rural carrier, who works when the regular carrier takes off.

In 1967 Barneveld was a third-class Post Office with quite a small mail volume. In 1968 Barneveld went up to a second class office. Today Barneveld is still a second-class Post Office with a larger volume of mail. The size as far as amount of mail handled ranks Barneveld Post Office in the top, third in the nation.

The Post Office area of Barneveld is 110 miles long and covers about 75 square miles. It goes about $\frac{1}{2}$ way to Ridgeway, almost to Arena Hollandale and Blue Mounds.

Talk also of consolidation of area Post Offices was an issue. But this hasn't begun to happen yet for our area.

ORGANIZATIONS

Many of you probably know Barneveld has a new Post Office and wonder how this came about. In 1967 Barneveld Post Office was rated as sub-standard. Plans were drawn up, but no funds were available for rebuilding; But the Postal Reorganization Act has a bonding in it to upgrade local post offices. In 1973 final approval came for the new post office. Bids were required and it was built by Twin City Inc. of Praire De Sac. The building is not owned by the government but by the corporation that built it and they lease the building out.

The Post Office was housed in various locations over the years. One of the earlier locations was that of the Trail Riders Building formerly located behind the bank. From there it went to the present site, Barneveld Heating and Sheet Metal Co., then into the building housing DeSmet's Realty, back over to the Heating and Sheet Metal building, then to the mobile home where it was while the new Post Office was being built. Now the Post Office is located on Main Street.

You may wonder where the mail goes when it leaves Barneveld. All the mail leaving Barneveld or part of Southwestern Wisconsin goes through Madison and then is sent out to other major offices.

There are no immediate price hikes expected in Postage Stamps at least for the next year. But the fact that the Post Office goes in debt by the millions each year raises one large question, is the Postal System a service or is it a business? Should it have such a debt and should this debt be absorbed by the government as a service to the citizens? Or should it be changed to more of a business to break even and to support its self?

Mike Brennan

Wilma Hughes

ORGANIZATIONS

In each community the interests of the townspeople result in the formation of many organizations and special interest groups. Barnsveld organizations to which the townspeople can belong vary in ages from those who belong to the young men. Some organizations are specified for men, such as the Men's Advancement Association, while others gain support from the women in the Ladies Auxiliary and Women's Club. There are also organizations that help provide for the entertainment in the community. These are the Athletic Boosters and The Volunteer



Fred Segebrecht

Sometimes we take for granted these activities and programs offered to the community. In Barnsveld and during our interviews we have found what started as a small group of people who continually strive to make the community a better place.



Wilma Hughes

In each community the interests of the townspeople result in the formation of many organizations and special interest groups. Barneveld has developed numerous organizations to which the townspeople can belong. These organizations vary in ages from those who belong to the Jaycees to the Senior Citizens. Some organizations are specified for men, such as the Legion and Advancement Association, while others gain support from the women of the town in the Ladies Auxiliary and Women's Club. Too often those organizations that help provide for the intertainment in Barneveld are forgotten. These are the Athletic Boosters and The Volunteer Firemen.

Sometimes we take for granted those activities and programs offered to Barneveld and disregard those who provide them. Through interviewing we have found what stamina and strength these groups have and how they continually strive to make Barneveld a better town.

Sometimes we take for granted those activities and programs offered to Barneveld and disregard those who provide them. Through interviewing we have found what stamina and strength these groups have and how they continually strive to make Barneveld a better town.

Each summer the Advancement Association has a swimming program at Blue Mounds Park to instruct swimming for the younger citizens of Barneveld. The idea of the Super Bowl originated with the Advancement Association which was resulted in great success. When the women of Barneveld decided to celebrate the distinction between Barneveld, Kingsburg and Barneveld, Holland it resulted in the Tulip Festival. The Advancement Association made the Windmill which stood along Highway 18 with the many tulips provided from Holland. Each year when the School Fair rolls around the Advancement Association is eager to help make the Fair a success. They help sell food and provide many of the prizes.

In the earlier years of the organization's existence, they provided a breakfast on the opening evening of Trout Season. This has since then been discontinued but replaced by a breakfast on the opening of the year.

Advancement Association

The Advancement Association was established in August of 1949 by Wayne Robinson, Ted Arneson and Harold Zeppelin with the intention of "promoting and encouraging the development of the village of Barneveld and the best interests of its citizens." Since then these men have helped attract 60-70 more men with the same interest.

In the early years of its existence the Association consisted of mainly business men and townspeople. Since then the Association has expanded to Rural and Urban membership.

Every third Tuesday of each month sees the Advancement Association's meetings called to order. Election month occurs in January at a yearly Oyster Supper. The officers for 1977 are:

President - Fred Segebrecht

Vice President - Eddie Collins

Secretary - Ken DeSmet

Treasurer - Rick Anderson

Board member - Bob McSherry.

At the first meeting of the Election Month a \$3.00 fee is collected from each member.

In February of 1963 a Lake project was **suggested**. Now a large portion of the funds raised by the Advancement Association are used to pay off the development of Birch Lake, its shelters and facilities. Other programs span a wide area of interests.

Each summer the Advancement Association has a swimming program at Blue Mounds Park to instruct swimming for the younger citizens of Barneveld. The idea of the Super Brawl originated with the Advancement Association which has resulted in great success. When the women of Barneveld decided to celebrate the distinction between Barneveld, Wisconsin and Barneveld, Holland it resulted in the Tulip Festival. The Advancement Association made the Windmill which stood along Highway 18 with the many tulips provided from Holland. Each year when the School Fair rolls around the Advancement Association is eager to help make the Fair a success. They help sell food and provide many of the prizes.

In the earlier years of the organization's existence, they provided a breakfast on the opening morning of Trout Season. This has since then been discontinued but replaced by a breakfast on the opening of the Deer

Season. A chicken Barbeque has become an annual event also. The Barneveld Shopper has been distributed since 1962. The Advancement Association has since then supported it 100% both verbally and financially. The distribution of the community calendar in the community originated with Advancement Association also.

With the Association's main objective is to help out the community, they have found sufficient enough funds to help out the school when it needed it. They provided television sets and a ditto machine in earlier years. The band has been boosted by the instruments and the wooden marching rifles for the school color guards which they also have provided.

Diana Firschbaum

American Legion

It is a fact the American Legion of Barneveld has done alot for the people in the community.

Its past and present members are very much appreciated. Of all the 66 members, we interviewed just one, Gail Mantiful.

Some of the officers of the Legion are;

John Wagnueller-Commander
Bill Roberts- Finance Agent
Roger Jabs-First Vice Commander
Milt Hughes- Second Vice Commander
Gail Mantiful-Adjetent.

The purpose of the club is to serve the community. Some of the latest things it has done for the community are sponsor youth groups, Badger boys state, County Government Days and Hodan Days. They also helped the High School Band raise money for a band trip and held Bingo for the Booster Club to buy a new wrestling mat.

Whenever the Senior Citizens want to use the American Legion Hall they can free of charge.

They often sponsor the Boy Scouts for camp and scholarship and provide them with flags and equipment that might prove useful to them.

To be a member of the American Legion you would have to have served in the Armed Services during World War I, (April 6, 1917-Nov. 11, 1918). World War II (Dec. 7, 1941-Dec. 31, 1946). The Korean Conflict (June 25, 1950-Jan. 31, 1955) or the Vietnam War (Aug. 5, 1964-Aug. 15, 1973).

A past member, Joe Myers, is noted for his achievement in the American Legion.

The Legion is planning to procide in the same manner it has been helping out the community.

Boyd Calvert

The Athletic Boosters

Helen Kirch - Sec.

The Athletic Boosters is a new club started in 1976. The purpose of the club is to back all sports of Barneveld, and let the kids know they are being backed.

The officers are: President - Leo Clerkin
Vice President - Art Kirch
Secretary - Helen Kirch
Treasurer - Beulah Manteufel

The President's job is to conduct the meetings. The Vice President conducts meetings if the President is absent. The Secretary takes minutes of the meetings and advertises for upcoming events. The Treasurer keeps records of the money.

Among the things the club has done is running a concession stand at Cave of the Mounds over the last Halloween weekend. The money they raised paid for wrestling ribbons for the tournament the grade school had. They also sold concessions at High School Wrestling Matches.

The Athletic Boosters has seventy-four members. To be a member you must be 18 years old and have purchased a sweater for \$6.50. One of the main qualifications is to be a good sports booster and set a good example for students.

The Athletic Boosters have many activities planned for the future. They are planning to sponsor a bus to go to the Brewers' Baseball game May 15. They are going to have an Ice Cream Social in August and Art Kirch is donating 1/2 a beef to auction off, using the money for the Wrestling Fund.

The Boosters have given \$100.00 to the Wrestling Fund, and also have voted in favor of keeping a youth center.

The Athletic Boosters have fulfilled the purpose of backing the Barneveld Sports Program. We hope it will continue in the future.

Jane Rheoba

Barneveld Jaycees

When you think about young men just getting out of school, you picture them working at a job with marriage in the back of their minds. Once they tangle with these responsibilities these young men also become concerned about matters other than themselves.

In March of 1975 the young men of Barneveld contacted the Jaycee chapter of Mt. Horeb and organized their own Jaycees. The young men felt that they wanted to help out their own community with a club much like the Advancement Association but only for men between 18-35 years of age.

There are presently 22 members in the club. Dave Roberts holds the presidents position for 1977. Arnie Knight and Dave Myer are the internal and external vice presidents. Between the two of them they manage to relieve each other when the load gets heavy. Dave Schlimigan is the Secretary-Treasurer and Greg Clerkin as State Director, handles all the mail that informs them of the contributions other Jaycee chapters have made in their communities.

The coming of each March calls for a meeting on the first Thursday of the month where each member pays his dues of \$14.50. Nominations of officers for the new year are also taken. The meetings follow there after on the first Thursday of every month.

In the 3 years of the Clubs' existence they have helped other organizations in their social events by running the games for the School and Annual Fair. Usually helping in any place help is needed.

They have many future plans for Barneveld. They hope to help cozy Barneveldians into a clean and comfortable environment by providing more benches and garbage containers. They hope to sponsor a dance once a month to support their activities.

Much Thanks goes to Dean and Greg Oimoen for the encouragement they gave in the organizing of the Barneveld Jaycees.

Diana Kerschbaum

Barneveld Ladies' Auxiliary

The Barneveld Ladies Auxiliary was chartered in 1947. In order to be a member, a woman has to be a wife, daughter or a granddaughter of a Legionaire in good standing; one who served in the armed forces in World War I (April 6, 1917 -Nov. 11, 1918), World War II (Dec. 7, 1941- Dec. 31, 1946), the Korean Conflict (June 25, 1950 - Jan. 31, 1955) or the Vietnam War (Aug. 5, 1964 -Aug. 15, 1973).

At the present time, there are 40 members. The current officers are:

Pres.-Aleta Hughes

Vice Pres. - Peggy Jones

Sec. - JoAnn Manteufel

Tres. - Mary Williams

The purpose of the Auxiliary is to aid the Legion in any way possible.

Their projects include serving meals at wedding receptions, school events and sponsoring the Third District Conference of the American Legion.

The Auxiliary pays fees for one girl to go to Badger Girl's State and splits the cost for a second girl with the Woman's Club. They also send money to the Veteran's Hospitals in Madison, Milwaukee, and Tomah to help ~~re~~habilitation programs.

The future plans of the Auxiliary, as in the past, are to continue to aid the Legion and the community.

60

Patti Lempfl
Jane Theobald

Senior Citizens

Wilma Hughes Secretary

The Barneveld & Ridgeway Senior Citizens provides a fellowship & recreation for the people over 60. The first meeting was held on May 29, 1973 at the Barneveld Legion Hall. They meet twice a month in the summer. Once at Barneveld, and once at Ridgeway. In the months of January, February, and March they only meet once.

The officers of the Senior Citizens are as follows:

President-Sara Ryan

Vice President-Margaret Holmes

Secretary-Wilma Hughes

Treasurer-Helen Ryan

Besides the officers there are also special committees. The food committee sees that the place is unlocked, makes coffee, and sets the table. The entertainment Committee gets the Bingo Cards and gifts for playing cards. The birthday committee has a birthday party once a month to celebrate the birth days in that month. A big cake is made with all the names of that month.

Each gathering is potluck, with each person bringing just one item.

They also put 50¢ in a dish everytime to pay for the use of the hall and for coffee.

The qualification for being a member is you just have to be sixty years old.

The senior citizens also have an escort service in which someone from the community will take them shopping, to a doctor, or anywhere they would like to go. They also have a courtesy card with which

Senior Citizens can get a discount on certain items on certain days of the week.

The Senior Citizens have had many trips. They have gone to Florida twice, Amana, Iowa, Horicon Marsh, Ice Follies, Laurence Welk, and to the orchards at Gays Milks. Future trips are to go to Door County, and Sun Prairie.

The Senior Citizens of Barneveld and Ridgeway are the most active of Senior Citizens in Iowa County.

Women's Club

The Women's Club was organized in August 1949. The purpose is to be of service to the community, to broaden rules of justice for all, one thing at a time, the rule of the majority and the right of the minority. Through the years they have tried to follow the rules and to be of service to the community of Barneveld.

The club has a constitution where the duties are spelled out. The President shall preside at all meetings, appoint all committees and officers not provided for and watch over the welfare of the club. The Vice President takes over when the President is not there. The Secretary keeps the minutes of the meeting, the records, issues notices and calls special meetings at the Presidents request. The treasurer collects dues, pays bills, and gives monthly and annual reports.

The officers for 1976-1978 are :

President - Helen Torphy

Vice President - Mildred Swedlund

Secretary - Julie Arneson

Treasurer - Lois Montague

The club has 30-32 members, with the normal number around 25-30. Membership is open to any women interested in serving the community. You need not be a citizen of the village, but must be in the town or township of Barneveld. The club is neither nonsectarian or political.

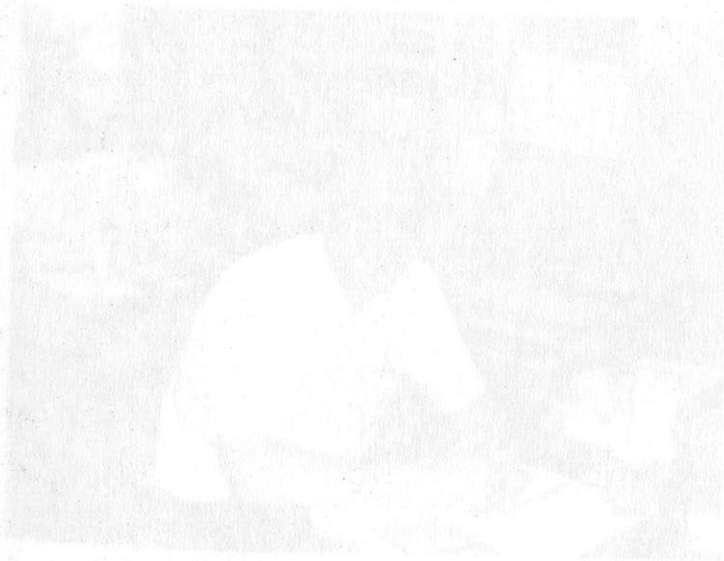
The club meets once a month from September to May on the second Thursday. They have no meetings during the summer but the officers plan for the next year during the summer months.

The club has many interests. One of the major events they sponsor is the annual visit of the blood bank, which they have sponsored for over twenty years. The Women's Club also started the library. It was begun by the members who were able to work at it. They planted the Christmas tree in front of the Village Bar and another one across from the bank as the other one is getting too large to decorate. The Women's Club has received 5000 tulips from Barneveld, Holland in return for the bulbs Barneveld, Wi. sent two benches for their park. Another major interest is helping in

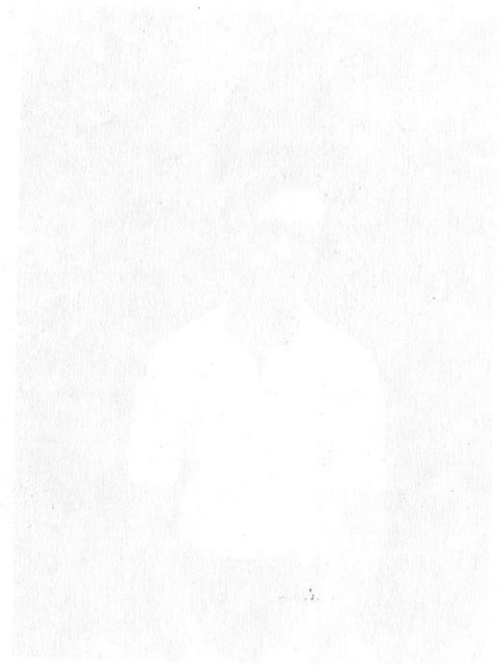
the Emergency Medical Team gather funds for the ambulance. They had a benefit auction last September and raised around \$3000.

In the future the club plans to have another auction for the Emergency Medical Team. They will also continue to sponsor the blood bank, tulips from Holland to plant and sponsor any projects helpful to the community.

*Patti Kempf
Jane Theobald*



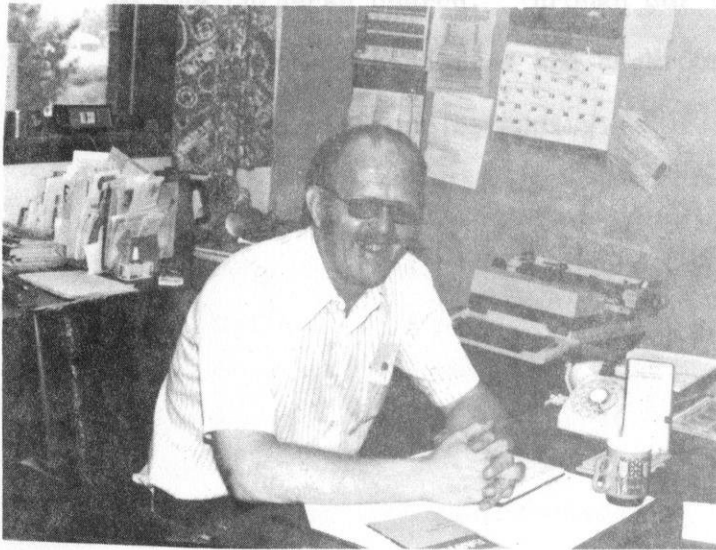
Bob Twiton



Don Postwood

CHURCHES

The church plays an important role in any community. For this reason we were interested in the church roles of our community. We interviewed each minister or priest, from the three denominations in Burnsville: Father Robert Scholzer from the Catholic church, Pastor Don Portwood of the Congregational church and Pastor Robert Twiton



Bob Twiton



Don Portwood

Father Robert Buholzer
of
St. Mary's Catholic Church

The church plays an important role in any community. For this reason we were interested in the church roles of our community. We interviewed each minister or priest, from the three denominations in Barneveld: Father Robert Buholzer from the Catholic church, Paster Don Portwood of the Congregational church and Paster Robert Twiton of the Lutheran church. Through our interviews, we compiled information on their histories and backgrounds, organizations and their interaction with our community.

St. Mary's was built sometime between 1866 and 1893. They have a rather small congregation of about 200 people. Among the church's organizations are: Religious Education, Parish Council and Ladies Group. Although the organizations and facilities are limited, Father Buholzer feels it is more important that his Church reach out to the community through the various people who are active in the community. Within the School and the Legion, they help with making meals for weddings or important meetings.

Father Buholzer feels that the role of the church will always remain constant because of the motivations and faith of the people.

Billy Smith
Gene Cramody

Father Robert Buholzer

of

St. Marys Catholic Church

Father Robert Buholzer of St. Marys Catholic Church has been a member of the Barneveld Community for 8 years. We were interested in finding out about Father Buholzer's background as well as the Church in our Community.

Father Buholzer's parents were from Switzerland and came to Monroe, Wisconsin where he was born. He feels his upbringing was very strict.

After High School, he attended the Milwaukee seminary for 8 years because he had an inner feeling that it was God's will for him to perform this role in his life. After his training, he was assigned to the Barneveld Catholic Church.

St. Marys was built sometime between 1866 and 1890. They have a rather small congregation of about 250 people. Among the church's organizations are; Religious Education, Parish Council and Ladies Group. Although the organizations and facilities are limited, Father Buholzer feels it is more important that his Church reach out to the community through the various people who are active in the community. Within the School and the Legion, they help with making meals for Weddings or important meetings.

Father Buholzer feels that the role of the church will always remain constant because to the motivations and faith of the people.

Holly Buite
Jean Carmody

Don Portwood

Don Portwood is the Pastor of the Congregational Church of Barneveld. Born December 17, 1949 in Lincoln, Nebraska, he grew up in Geneva Nebraska. Upon Graduating from high school, Don enrolled in the University of Nebraska, studying Pre-dentistry, changing to Pre-medicine and then psychology. After college he toured Europe for six months, where he discovered Christianity. When he returned, he became a carpenter for 9 months. Then he and some friends decided to enter the seminary at Princeton, New Jersey from 1973 to 1976.

Don never thought much about ministry during high school, but decided the best way to help others was to spreading the word of God.

His main reason for choosing Barneveld as his community, was because of its closeness to Madison and the University where his wife is enrolled in law school. He feels people in Barneveld tend to have a more relaxed attitude about life and their surroundings.

A main objective, Don thinks, is to develop a better sense of community, to break down the walls of isolation, to create new opportunities for youth. However, he denies that his job is to change the community, but rather to nurture it. He feels the luke-warm church is out. Young people demand a more exciting atmosphere. It's going to take more committed people to keep the church in existence.

In this area, several churches are working together. For many years the Congregational and Lutheran Churches have been trading services during Lent, hosting various groups that visit the area, and have started many organizations to better the community.

Don doesn't see a single unified church of one denomination for the future. However, people will work together more, and differences will decrease. He doesn't think Catholics will become involved with the Congregational and Lutheran churches in Barneveld because of Ridgeway being where the Catholics of the area are centered.

Don has many plans for the church to become in the community. One of these is remodeling the basement of the Congregational church into a community coffee house, where people can meet and talk with new friends. "People need another place to go besides the bar and Madison. This is a good example of how churches can serve the community."

He is pleased with how the school and churches work well together, leaving Wednesday nights open for church activities. "School isn't an enemy to church."

Working with smaller churches is what Don enjoys. He feels costs won't hurt churches, they can always close the structure. A church is people, not a building.

"Churches won't stay unless youth get involved. Older people enjoy seeing youth attending church, because youth are the backbone of the future."

Rick Powers,
Todd S. Giveland

Don Fortward
Don Fortward is the Pastor of the Congregational Church of Barne-
Reverend Twiton

Barneveld Lutheran Church

Reverend Twiton was born in the year 1932 in Sun Praire. After attending grade school and high school, he went to Augber College for four years, earning a Bachelor of Arts Degree. Following that, he attended the Lutheran Center for four years. The third year at Lutheran Center was his seminary training and internship.

He began his ministry in Catheran, North Dakota, on the first of July, 1958. He came to the Barneveld Church on November 15, 1962.

In Barneveld, the Lutheran Congregation dates back to 1915. A group of Lutherans who normally went to church in Blue Mounds were given the old Baptist Church Building for a dollar. From 1915-1954 there were two places to worship, one place was West Blue Mounds Lutheran church, and the other was the old Baptist Building.

As the years went by the Lutherans who worshipped in the church here. began to really form a congregation. In 1954 the Barneveld Lutheran Church was incorporated by the state as a legal congregational corporation. Then, in 1957, Barneveld and Blue Mounds formed a parish, and aquired a pastor. Before that time they were served by a pastor out of Mt. Horeb.

As of January first, 1977, the membership in Barneveld Lutheran was about 612 people.

The church has two choirs, a senior choir and junior choir. The Junior consists of kids from fourth to ninth grade, while the senior choir is for people from the tenth grade and older. The church also has a council which is the ruling body of the congregation and consists of nine members. The ALCW is the women's group which meets monthly for Bible study. Finally there is regular Sunday School for senior high kids, and an adult Bible class.

The Lutheran Church groups and its individual members play a varied and vital role in our community.

MAY 1975 EDITION

In order to get a map for various parts of Barneveld, our group
went across the country. We went to the Iowa County Court-
house, office of deeds, and the most recent maps they could
give us were two maps dating back to 1887 and 1888. The map
dating back to 1887 of the Village of Stephentown which
later consolidated with the early Village of Barneveld. The
map was somewhat accurate as to the plotting of the town,
but we relied on our own knowledge of the Village to update
the streets and newer parts of town, which sometimes meant
going out into the streets and checking old signs and houses.
We also used an aerial map, which was a fairly part of the
new Highway 16-151 plans. The map of Barneveld was made in
1975 with a few new additions added since then. These new
additions were super-imposed upon the actual aerial map.
This map was donated to the Village by the State Highway
Commission to be used as an indicator of the new parts of the
Village of Barneveld.

M

A

P

S

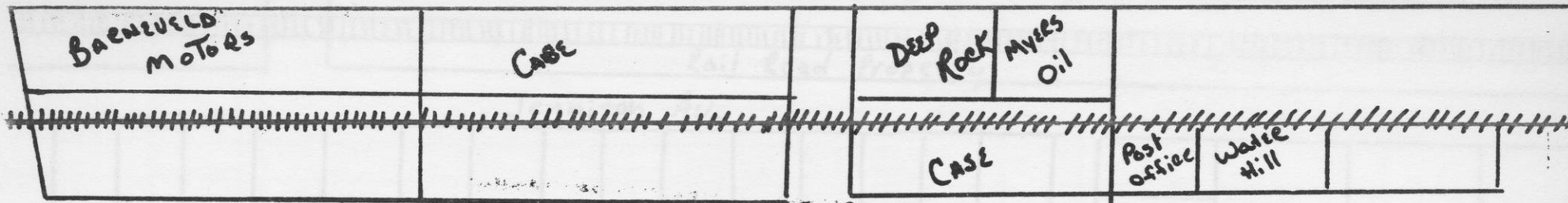
MAP INTRODUCTION

In our search for various maps of Barneveld, our group came across many obstacles. We went to the Iowa County Court-house, office of deeds, and the most recent maps they could give us were two maps dating back to 1882 and 1886. The map dating back to 1886 was of the Village of Simpsonville which later consolidated with the early Village of Barneveld. The map was somewhat accurate as far as the plotting of the town, but we relied on our own knowledge of the Village to update the streets and newer parts of town, which sometimes meant going out into the streets and checking road signs and houses. We also used an aerial map, which was originally part of the new Highway 18-151 plans. The map of Barneveld was made in 1975 with a few new additions added since then. These new additions were super-imposed upon the actual aerial map. This map was donated to the Village by the State Highway Commission to be used as an indicator of the new parts of the Village of Barneveld.

This is an aerial photo of Barneveld. The numbers represent points of reference to be used in locating various sites in the village area.

1. School 2. Bobcat Dealer 3. Jerry's Store 4. Barneveld Motors 5. Barbara's Circle



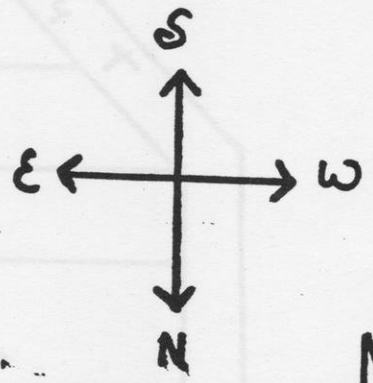


MAIN STREET



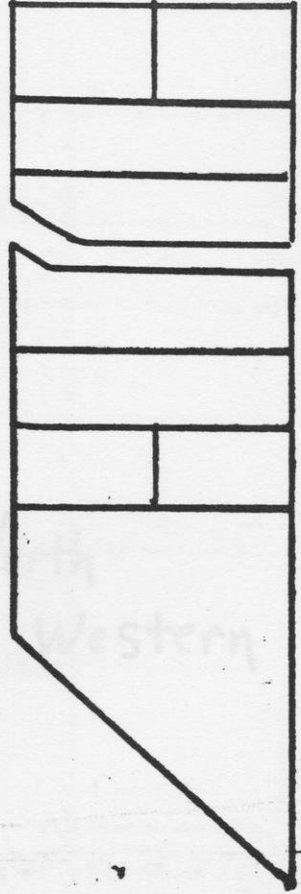
WOOD STREET

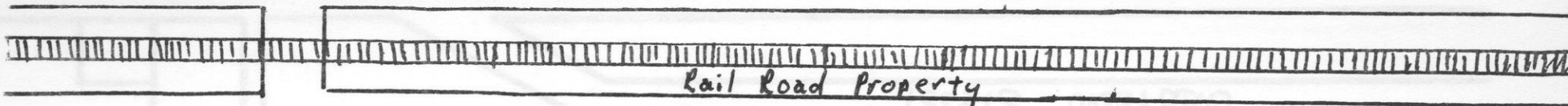
FARM LAND



NORTH EASTERN

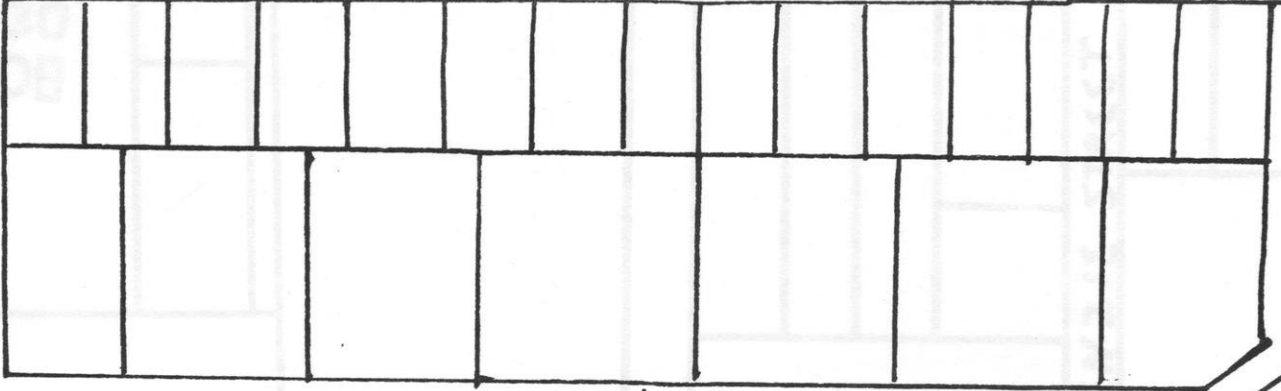
Garze STREET



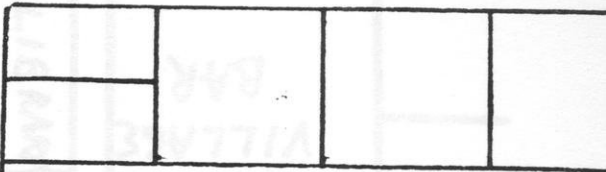


Rail Road Property

Jenniton Av.

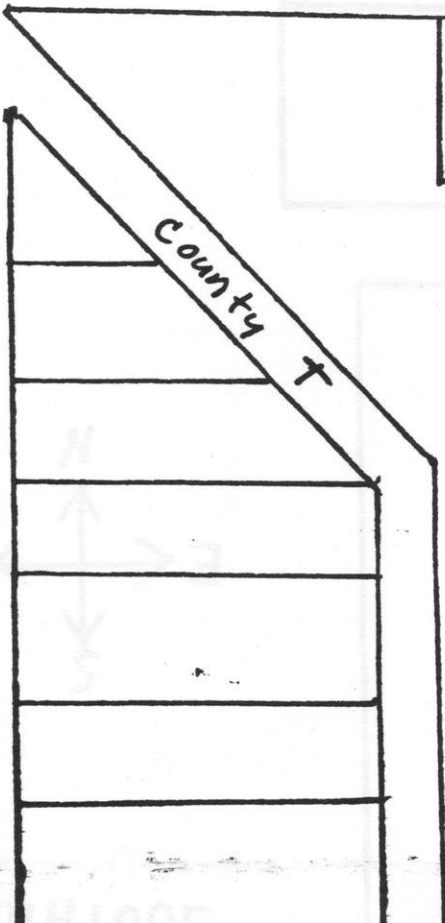


wood st.

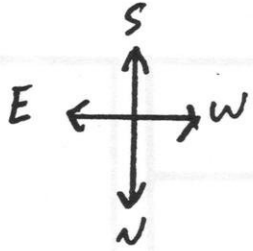


Farm Land

County St



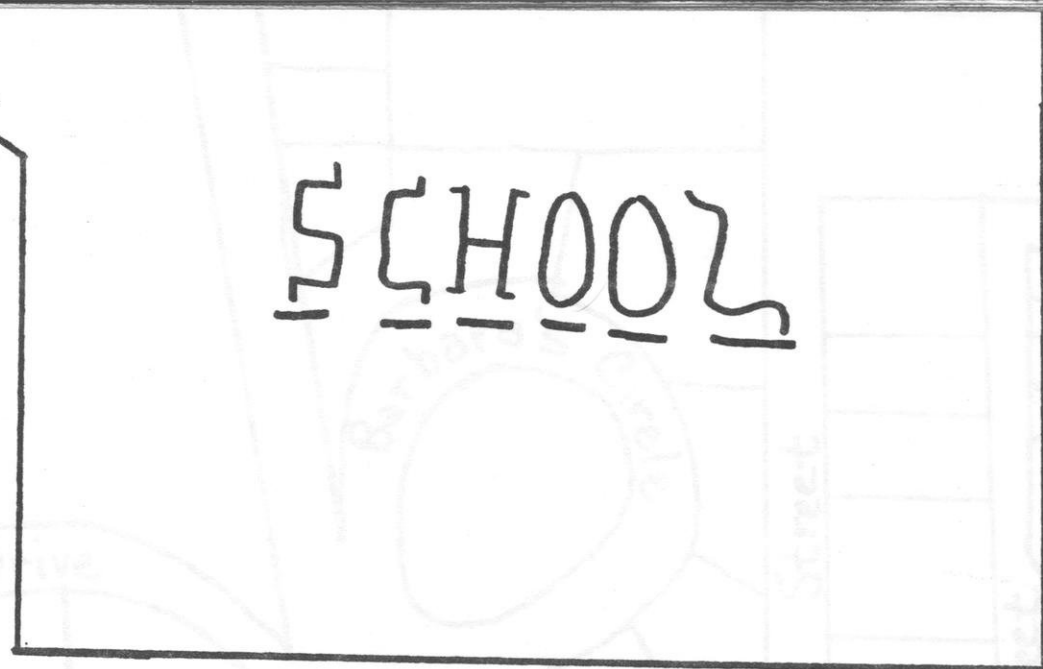
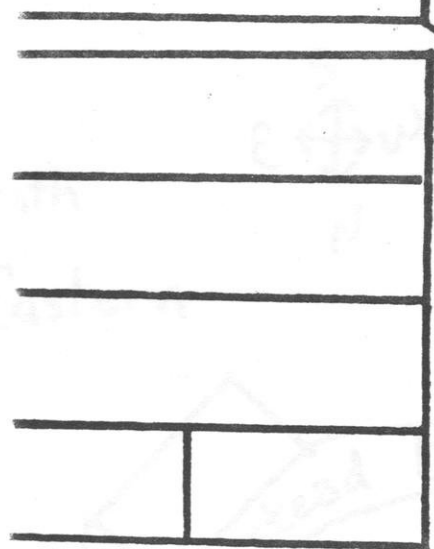
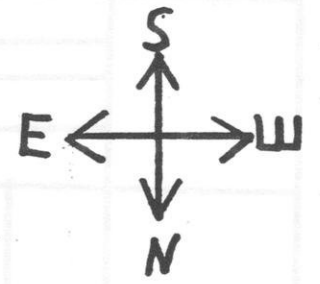
County St



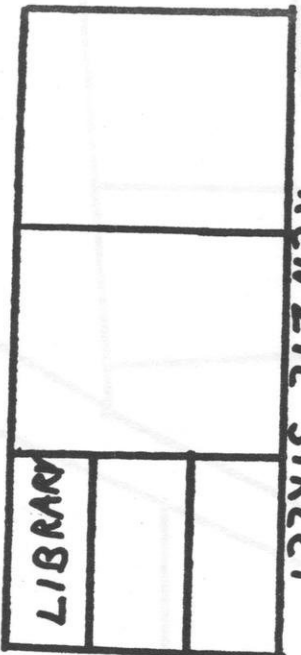
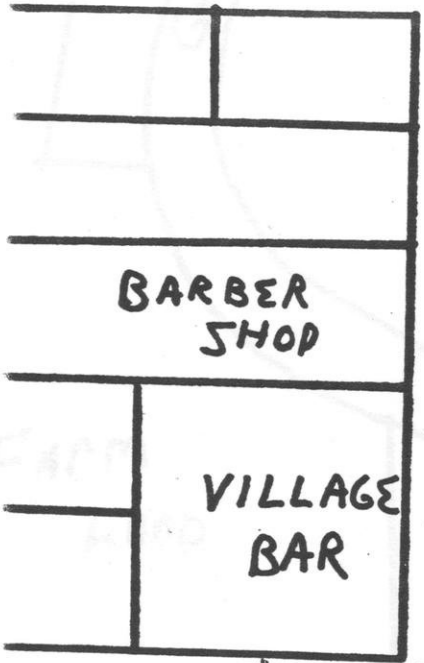
North
Western

SOUTHWESTERN

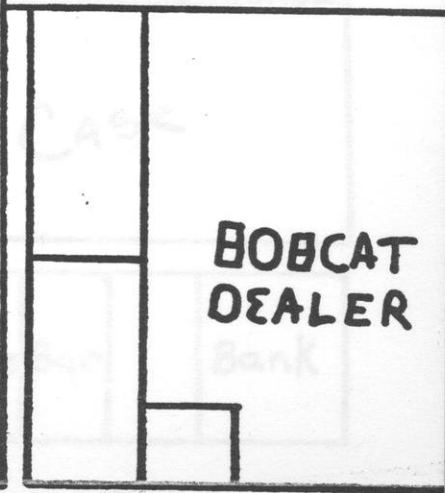
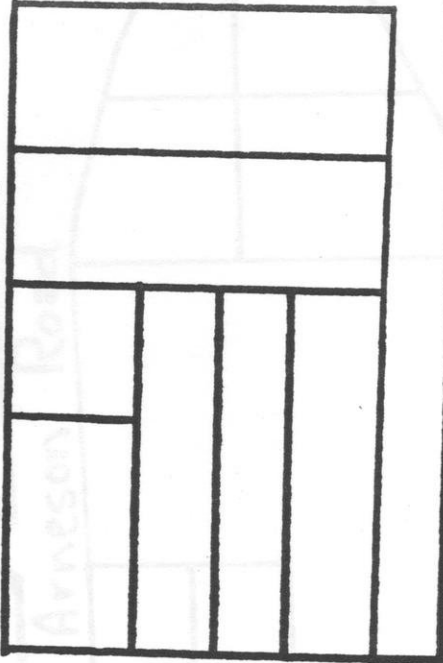
SCHOOL



DOUGLAS STREET

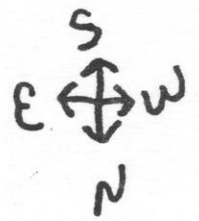


KENZIE STREET



ORRISON STREET

South
Eastern



Grimstead Drive

Barbara's Circle

FARM
LAND

Arneson Road

Garfield Street

South Street

Douglas St.

Alley Street

County K

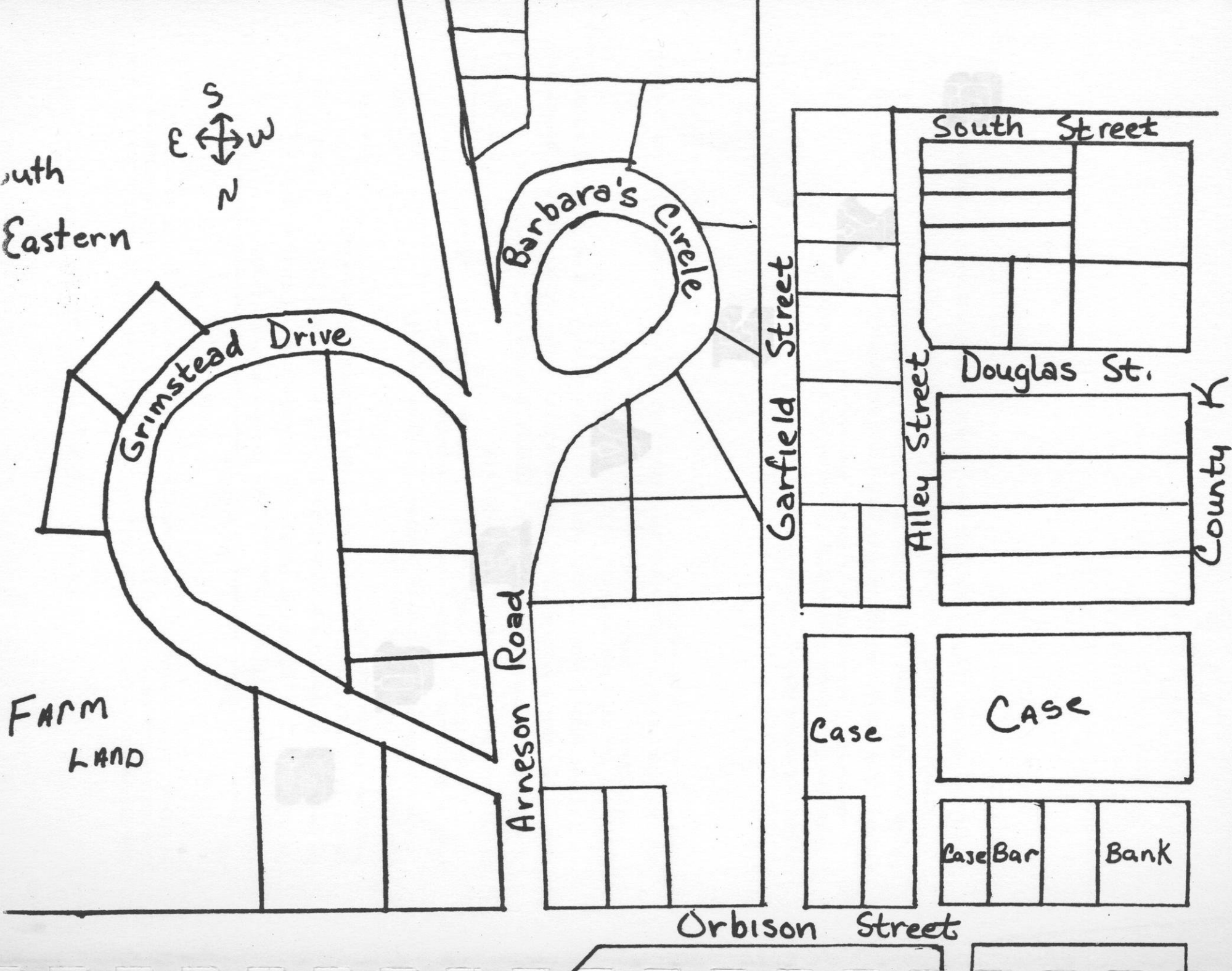
Case

CASE

Case Bar

Bank

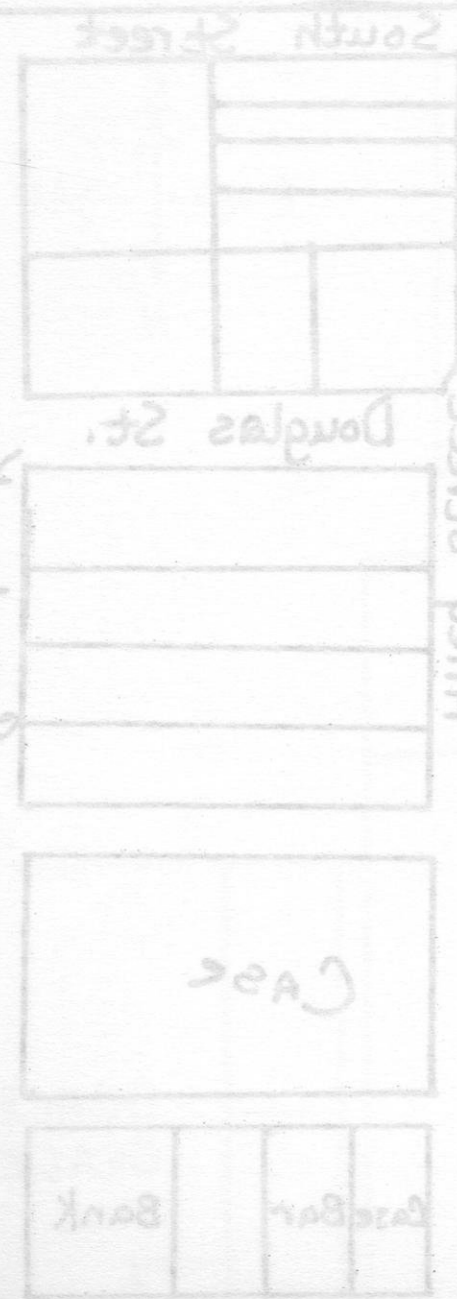
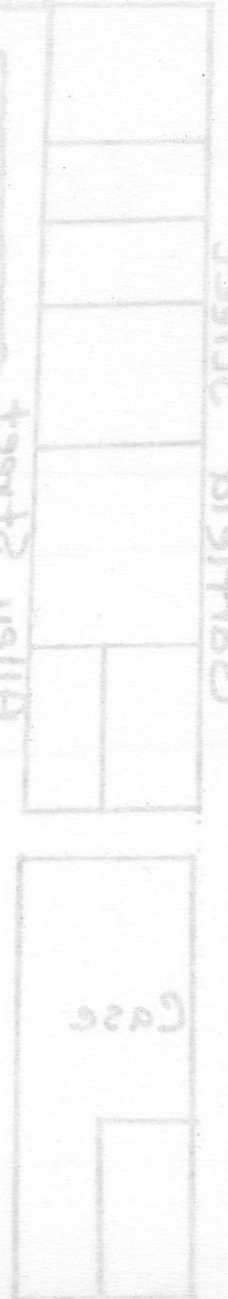
Orbison Street



North
East
West
South

Eastern

FARM
LAND



South Street

Douglas St.

Casebar

Bank

Dorison Street

COMMUNITY PROFILE SURVEY

The information on this survey will be used confidentially to compile data on the Community of Barneveld. It will in no way be tied with an individual's name or position in the community. We appreciate your cooperation in filling it out.

Sex _____ Age _____ Occupation _____

Years lived in Barneveld _____ Do you own your own home? yes no

Do you live in or out of the community? (circle one) If out, where? _____

Do you think Barneveld's government is as good as it could be? yes no

Do you think the local government is doing its part in promoting business for the community? yes no

Did you vote in the last election? yes no

Do you use the library provided for your benefit? yes no

What do you think attracts people to Barneveld? (circle one)
1) small town 2) small school 3) cheap housing 4) other: _____

Do you feel Barneveld needs more industry? yes no

Do you think Barneveld is a prospering community? (circle one)

What do you feel are problems in the community? (circle one or more if pertinent)
1) not enough jobs 2) not enough services offered 3) high taxes 4) other: _____

How would you rate the services offered in the community?
Excellent Good Fair Poor Very poor

Are there any services which you feel should be offered that aren't at the present time? if so, please explain:

Do you think the school spends too much money on sports? yes no

How do you feel about the quality of education in the school?
Excellent Good Fair Poor Very poor

Do you think the school spends too much money on sports? yes no

How do you feel about the quality of education in the school?
Excellent Good Fair Poor Very poor

Do you see the new Highway as a help or hindrance to Barneveld? Please explain



COMMUNITY PROFILE SURVEY

The information on this survey will be used confidentially to compile data on the Community of Barneveld. It will in no way be tied with an individual's name or position in the community. We appreciate your cooperation in filling it out.

Sex _____ Age _____ Occupation _____

Years lived in Barneveld _____ Do you own your own home? yes no

Do you work in or out of the community? (circle one) If out, where? _____

Do you think Barneveld's government is as good as it could be? yes no

Do you think the local government is doing its part in promoting business for the community? yes no

Did you vote in the last election? yes no

Do you use the Public Library provided for your benefit? yes no

What do you think attracts people to Barneveld? (circle one)
1) small town 2) small school 3) cheap housing 4) other: _____

Do you feel Barneveld needs more industry? yes no

Do you think Barneveld is a dying or prospering community? (circle one)

What do you feel are problems in the community? (circle one or more if pertinent)
1) not enough jobs 2) not enough services offered 3) high taxes 4) other: _____

How would you rate the services offered in the community?
Excellent Good Fair Poor Very poor

Are there any services which you feel should be offered that aren't at the present time? if so, please explain:

Do you think the school spends too much money on sports? yes no

How do you feel about the quality of education in the school?
Excellent Good Fair Poor Very poor

Do you think the school spends too much money on sports? yes no

How do you feel about the quality of education in the school?
Excellent Good Fair Poor Very poor

Do you see the new Highway as a help or hindrance to Barneveld? Please explain:

Over 80% feel that Barneveld is a prospering community but at the same time 55% feel more industry is a goal for the community's future.

One part of this survey dealt with the special community services offered to the people in Barneveld. We asked the question, "What do you feel are problems in the community?" The responses we received indicated a large number of people wanted to see new businesses established in

Survey Results

To be able to give an accurate book on the area of Barneveld we must also include a portion on the attitudes of the people in the area.

A survey was conducted reaching about 200 people. Both town as well as country people were surveyed. Some surprising results were received.

When compiling the results of the survey we discovered that almost an equal number of adults from all ages were interviewed. About 200 people were polled and it was an even split between male and female.

We found out that the people of the community of Barneveld are, for the most part, homeowners. Twice as many people in the community own their own home as do rent or lease their residences.

We also discovered that about 38% of the people are dissatisfied with the job our local government is doing for promoting business in the community.

Voting in the last election showed good involvement by the citizens of the community and township. To check on results we divided the town and township along these lines: Area 1 from 18-151 south and from Jones Street east; Area 2 from 18-151 south and west of Jones Street; Area 3 from 18-151 north and east of County T; and Area 4 from 18-151 north and west of County T.

Area 2 showed the highest voting percentage with 81% voting turnout. But, the other three areas were close behind, ranging from 75-78%. Our pole came up with an overall average of 77% going to the polls in the last election.

This survey also revealed that such services as the Public library are not fully taken advantage of. Only 39% of the people use the the library.

We asked the question, "What do you think attracts people to Barneveld?" and we gave some choices to select from: cheap housing, small town and small school. The most popular answer by far was the fact that Barneveld is a small town. This answer was three times as popular as the next answer, which was the fact that Barneveld has a small school.

Over 80% feel that Barneveld is a prospering community but at the same time 66% feel more industry is a must for the community's future.

One part of this survey dealt with the special community services offered to the people in Barneveld. We asked the question, "What do you feel are problems in the community?" The response we received indicated a large number of people wanted to see new businesses established in

Barneveld so that the townspeople wouldn't have to commute to their jobs.

The majority of the people in Barneveld feel the local government is doing a good job. However 44% of those polled feel it could be better.

Another portion of the survey asked, "How would you rate the services offered in the community?" The samples we received indicated that 75% of the people we surveyed thought that the services offered were adequate, with over 50% of the people rating the public services in Barneveld as good.

We also asked if there were any services which should be offered that are not offered at present. The replies we received offered many suggestions, most of which were in the area of establishing businesses in the community.

The people of Barneveld indicated a strong desire to establish an ambulance service in the community. They also expressed an interest in acquiring the services of a doctor and dentist, as well as a drugstore.

Our survey included two questions about the High School itself. The first question dealt with the quality of education in the Barneveld Public School system.

In total 181 persons responded to this question and the comments we received were generally favorable toward the credibility of the school. The people completing this question had a choice of five answers (excellent, good, fair, poor, very poor). In all, 18 people rated the educational quality as excellent, 92 as good and 56 as fair.

This reflects a confidence in our present school and its teachers. The last question of our survey is one that people are involved with. It reads, "Do you see the new highway as a help or hindrance to the community."

By more than a three to one margin the people of Barneveld are in favor of the new highway and feel it will help it considerably. Some of the reasons people feel it will help are: it will be much easier to commute to jobs, faster and safer travel, and it will bring more business to the community.

So the overall outlook we received from compiling the survey is that people want Barneveld to prosper and industry to enter into the community. But, for right now, it seems most people are very satisfied with the community and think its a pleasant place to live.

In comparing the town and country opinions the town was more dissatis-

fied with the effort of the government in promoting business than the country people. The town people are probably affected by the lack of business, because they notice the inconvenience more than the country people because town people are more directly involved. However, the majority thought the government was doing its best in promoting business.

In the last election held, 76% of people in town voted, 69% of the country people voted. The overall percentage of total sample together was 74%. One of the reasons the town percentage might be higher is that it is more convenient for town people to vote. Country people find it hard to get away from their work.

Out of the 79 town people interviewed, 70 thought Barneveld was prospering. Barneveld is prospering because people are building new houses and businesses are growing. It is not too far from Madison and other larger towns and is a peaceful, little community.

On the question "Does the school spend too much money on sports?", the town opinion was very close. 47% said too much money was spent on sports. 52% said no. 82 people were asked that question in town. In the rural area it was a wider margin. 25% said too much was spent, 75% said it was alright the way it was. Overall 40% said too much was spent on sports. 59% said it was alright.

Our next question in the survey was "How do you feel about the quality of education in the school?"

<u>Town</u>	<u>Country</u>
Excellent-6	Excellent-0
Good-54	Good-25
Fair-16	Fair-15
Poor-3	Poor-3
Very Poor-1	Very Poor-0

The majority of town and country fell into the "Good" category. "Fair" was next with 16 in town and 15 in country, it trickled off in Poor and Very Poor categories. Six in town rated it Excellent, while none did in the country.

From this survey we can conclude that the majority of the people in Barneveld are happy here. The people also see the outlook as good for the community. Most people feel the community is prospering and the outlook for new business is good.

G

R

The following graphs are the result of our comparing the answers given to our Survey by town and country people of the Community. In order to clarify the responses the results were put into a graph form.

A

P

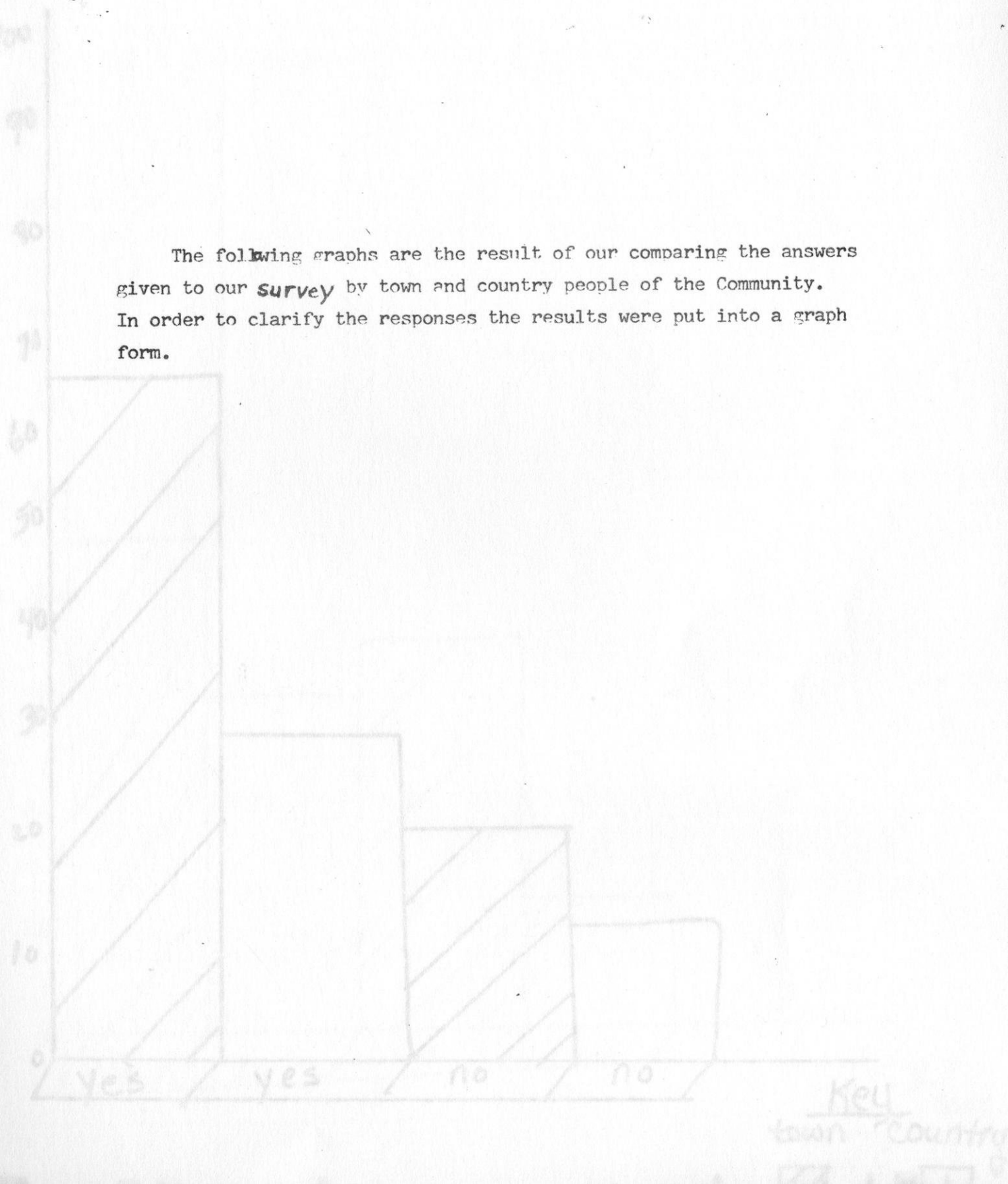
H

S

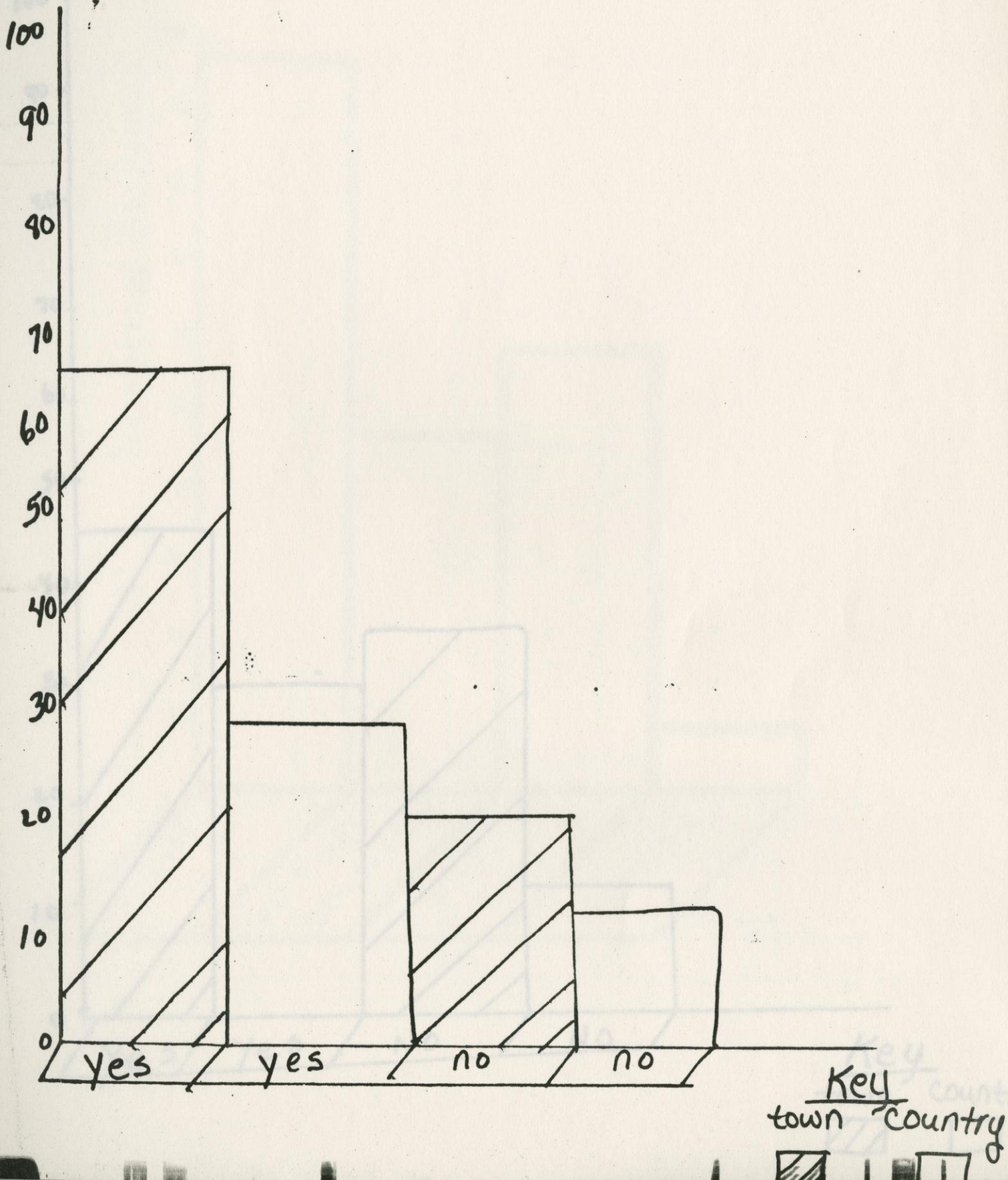


1. Vote in last election

The following graphs are the result of our comparing the answers given to our **survey** by town and country people of the Community. In order to clarify the responses the results were put into a graph form.



1. Vote in last election

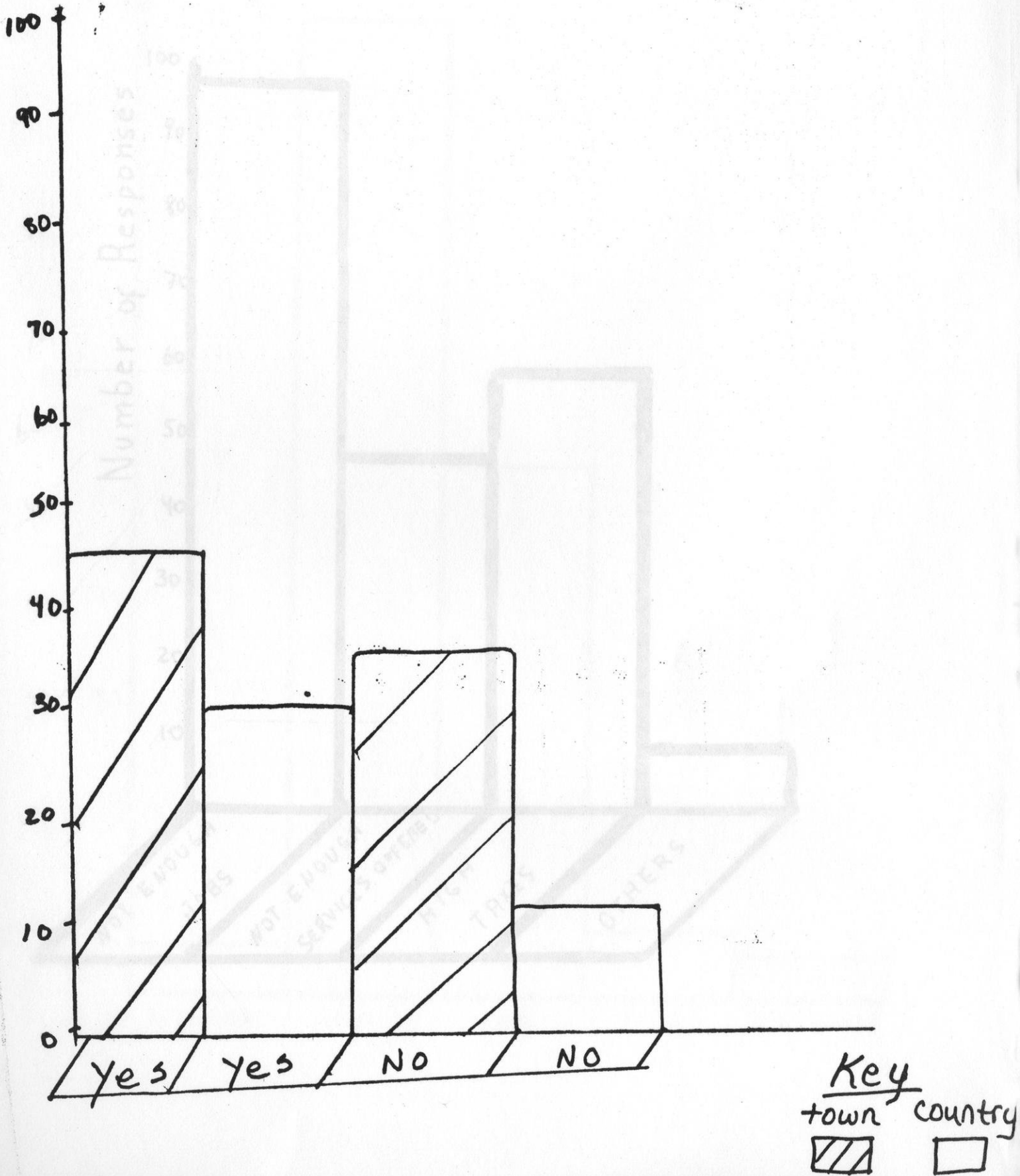


1. Vote in last election

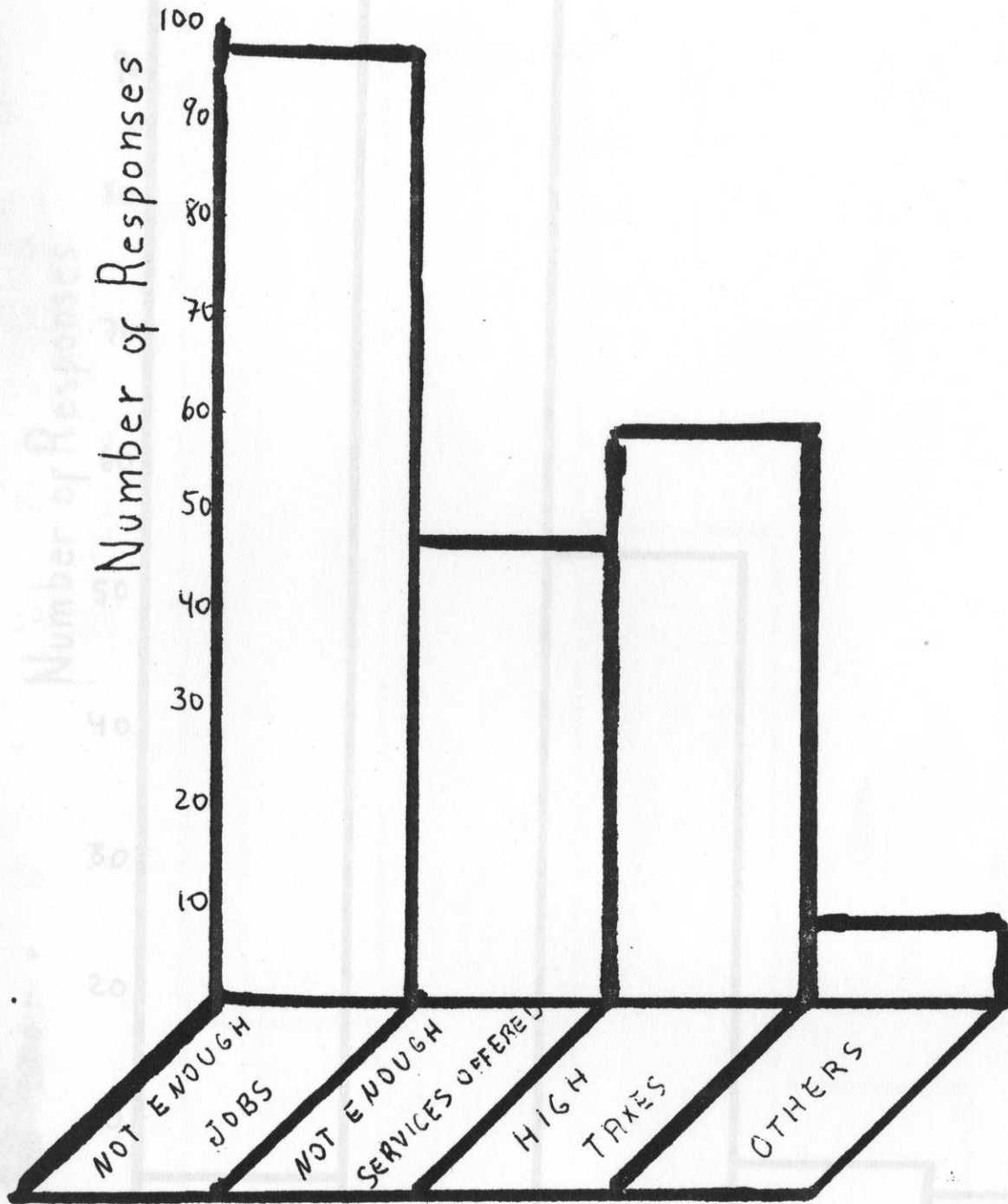


Ken
Country

2. Government promoting business for the community

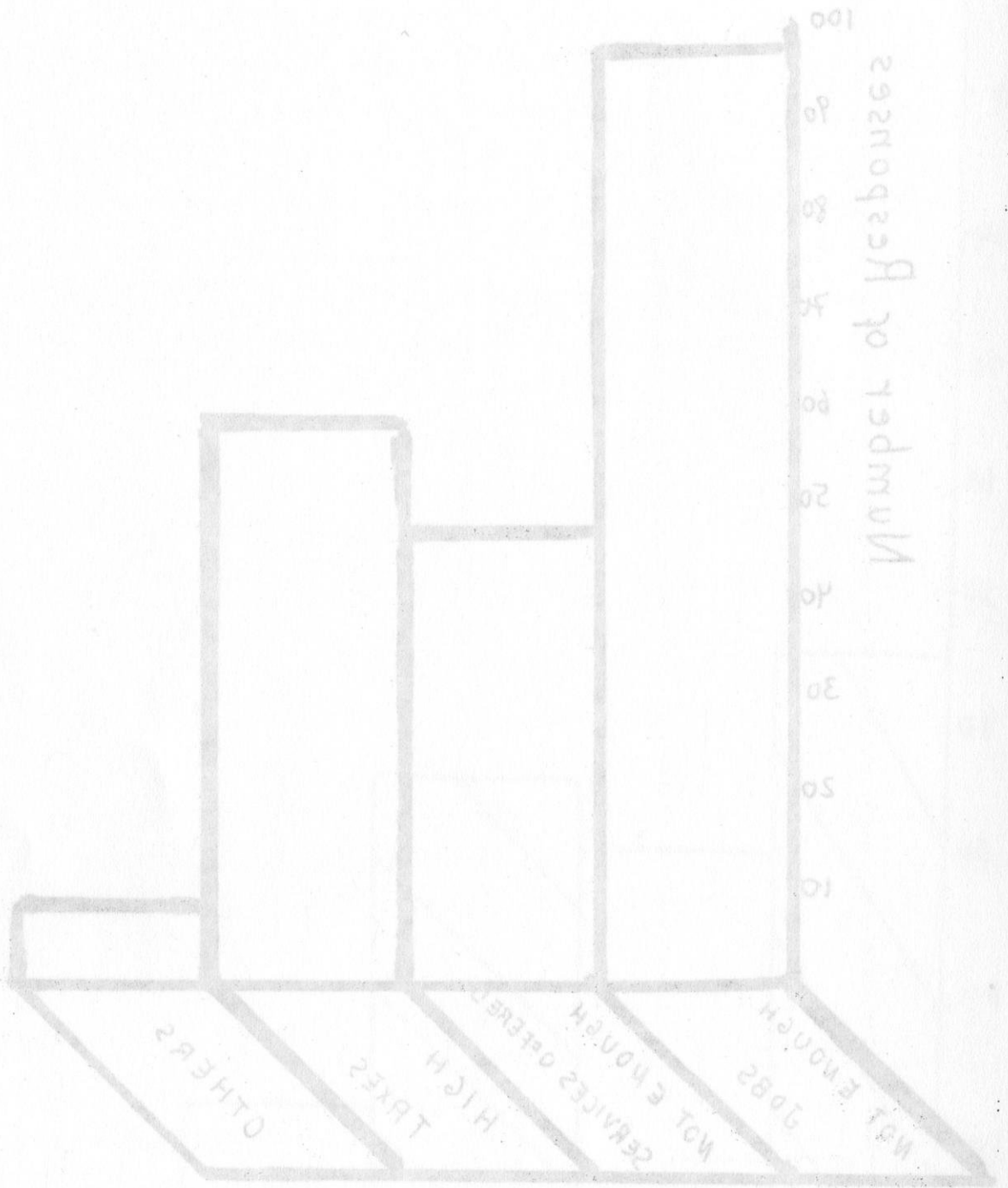


3. Problems in the Community

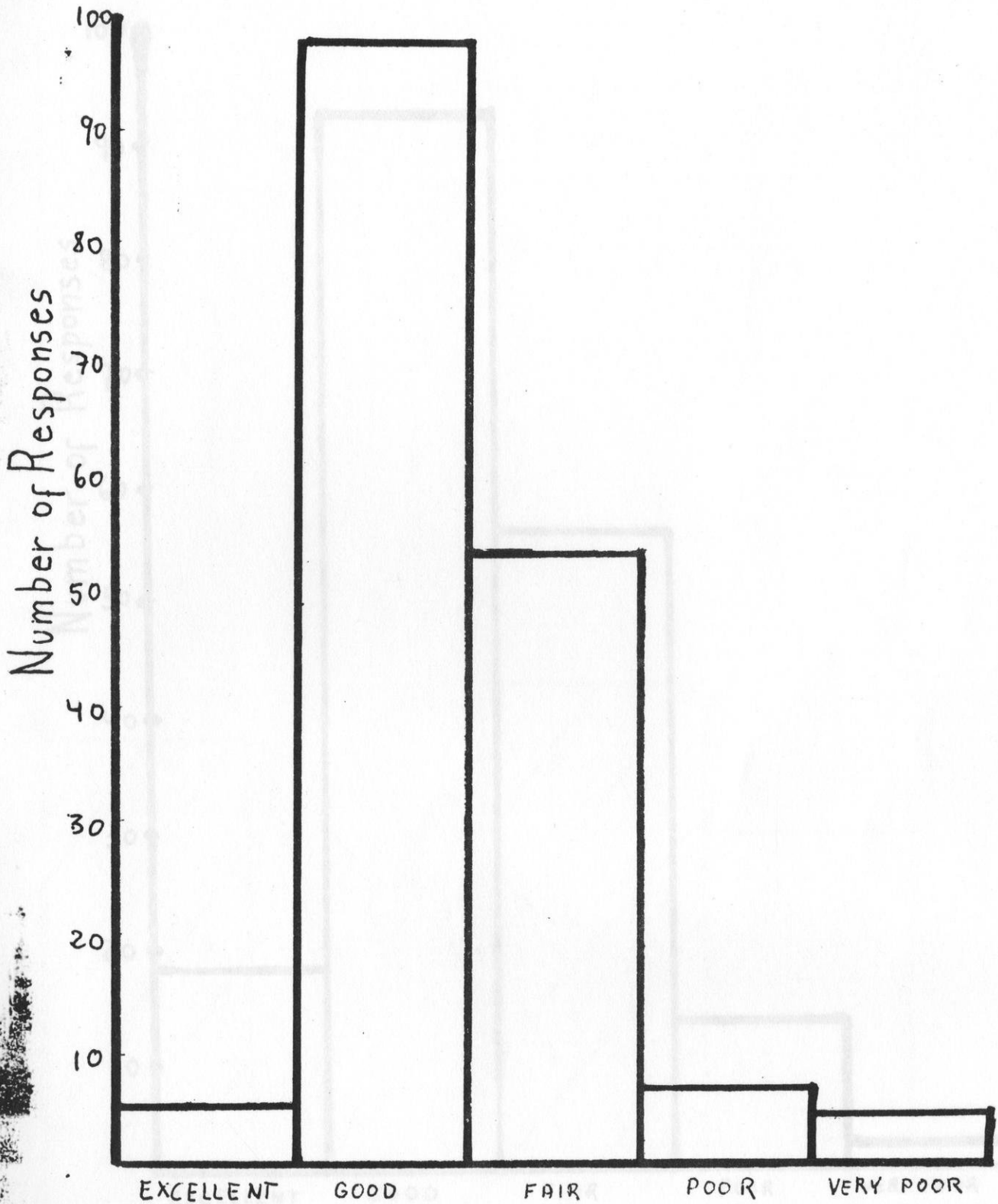


EXCELLENT GOOD FAIR POOR VERY POOR

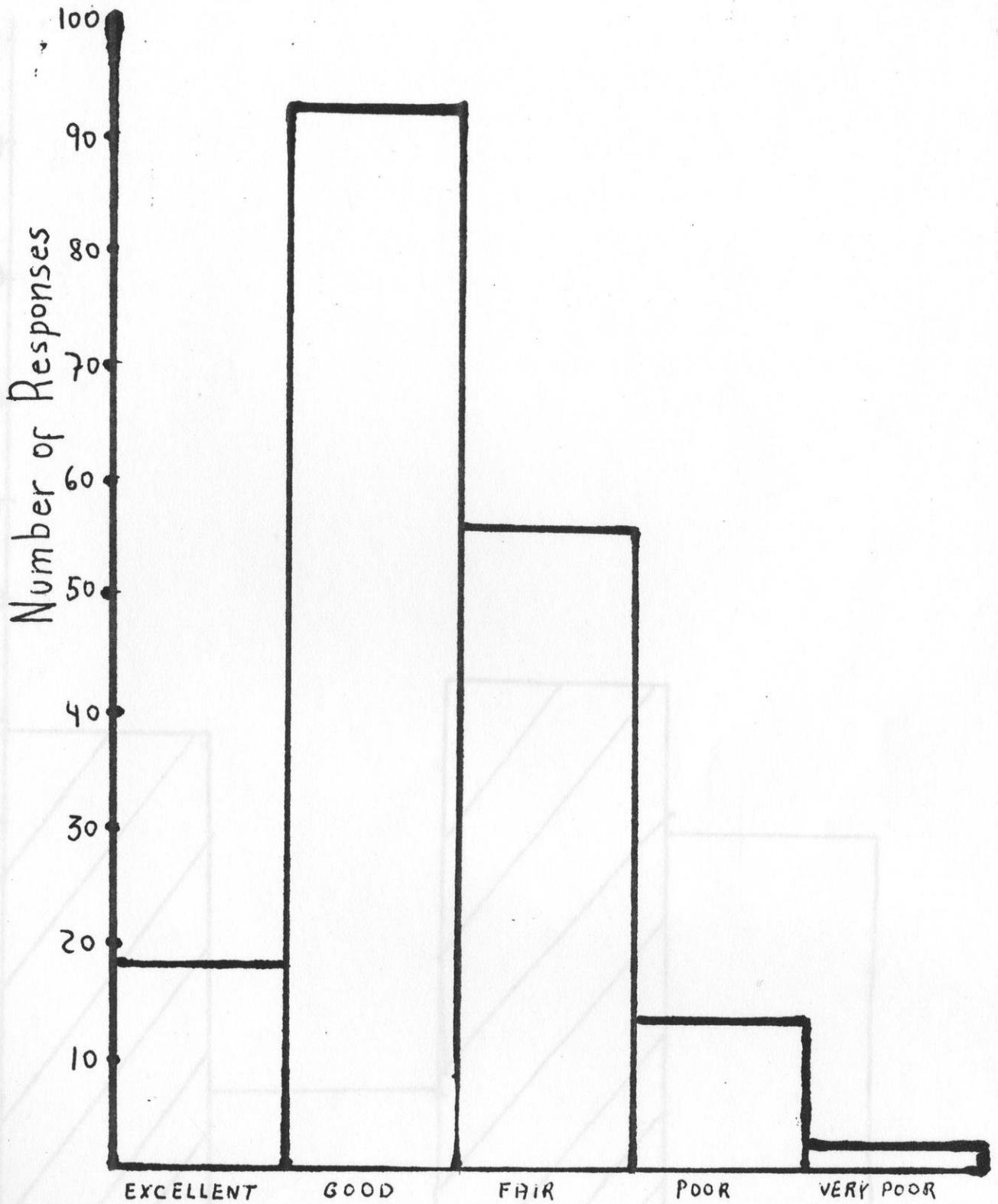
3. Problems in the Community



4. SERVICES Offered



5. Quality Of Education



6. School's amount spent on sports, too much?

