



# LIBRARIES

UNIVERSITY OF WISCONSIN-MADISON

## Wisconsin Dairymen's Association year book 1937. 1937

Wisconsin Dairymen's Association

Wisconsin: The Association, 1937

<https://digital.library.wisc.edu/1711.dl/YT2UROS NKW5LD8N>

This material may be protected by copyright law (e.g., Title 17, US Code).

For information on re-use, see

<http://digital.library.wisc.edu/1711.dl/Copyright>

The libraries provide public access to a wide range of material, including online exhibits, digitized collections, archival finding aids, our catalog, online articles, and a growing range of materials in many media.

When possible, we provide rights information in catalog records, finding aids, and other metadata that accompanies collections or items. However, it is always the user's obligation to evaluate copyright and rights issues in light of their own use.

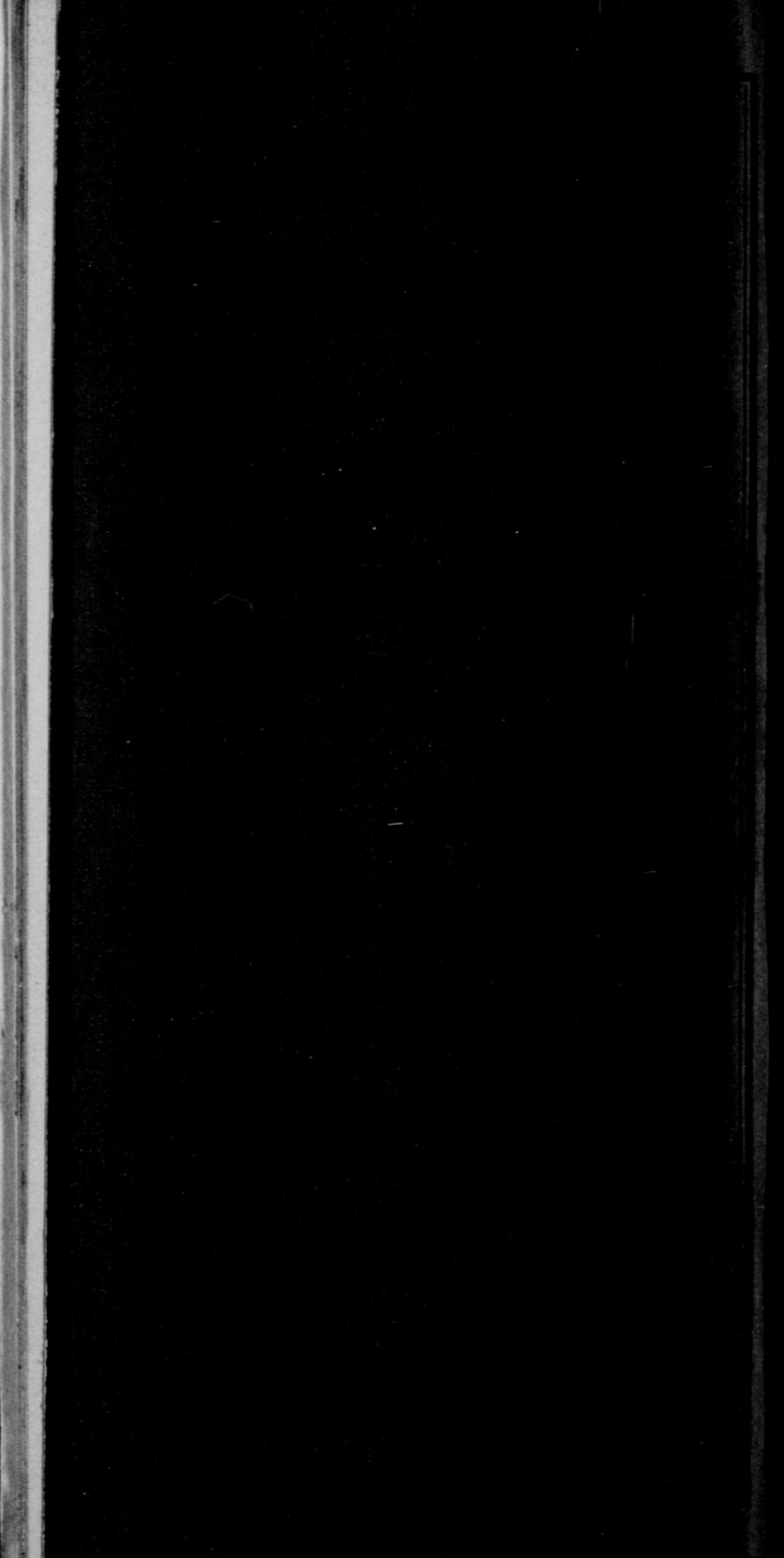
1877  
DIS  
Y  
65

WISCONSIN  
ASSOCIATION  
YEAR BOOK  
1937

A  
Wisconsin  
Who's Who  
in  
TESTING  
ASSOCIATIONS

ANNUAL  
MEETING





# WISCONSIN DAIRYMEN'S ASSOCIATION

FORT ATKINSON, WIS.

ORGANIZED 1872 **1936-1937** INCORPORATED 1917

## OFFICERS

President ----- Harry E. Hill, Sheboygan Falls  
 Vice-president ----- M. L. Witz, New Lisbon  
 Sec'y.-Treas. ----- J. C. Nisbet, Fort Atkinson

## DIRECTORS

W. A. Munn, Janesville                      G. W. Vergeront, Madison  
 D. P. Hughes, Menomonie                  Walter Katterhenry, Beloit

## FIELDMAN

A. C. Thomson

## OFFICE SECRETARY

M. A. Eustis

## PAST PRESIDENTS OF THE WISCONSIN DAIRYMEN'S ASSOCIATION

1872-4	Chester Hazen	Fond du Lac
1875-6	Hiram Smith	Sheboygan
1877	A. D. Leland	Sheboygan
1878	H. F. Dousman	Waukesha
1879	Z. G. Simmons	Kenosha
1880	Stephen Favill	Walworth
1881-2	C. R. Beach	Walworth
1883-6	W. H. Morrison	Walworth
1886	Stephen Favill	Dane
1887-9	H. C. Adams	Dane
1890	W. A. Henry	Dane
1891-3	W. D. Hoard	Jefferson
1894-5	C. H. Everett	Racine
1896-7	G. W. Burchard	Jefferson
1898-9	H. C. Taylor	Rock
1900-1	C. P. Goodrich	Jefferson
1901-3	J. Q. Emery	Dane
1904-5	Chas. L. Hill	Fond du Lac
1906-7	W. J. Gillette	Fond du Lac
1908-9	F. H. Scribner	Fond du Lac
1910-11	H. D. Griswold	La Crosse
1912-13	E. C. Jacobs	Dunn
1914-15	M. L. Welles	Fond du Lac
1916-17	Math. Michels	Fond du Lac
1918-19	Geo. McKerrow	Waukesha
1920-21	Chas. A. Peterson	Fond du Lac
1922-23	Geo. C. Humphrey	Dane
1924-25	H. F. Schroeder	Washington
1926-27	W. J. Dougan	Rock
1928-29	S. H. Bird	Fond du Lac
1930-31	J. E. Bowen	Barron
1932	W. J. Katterhenry	Rock
1933-34	P. C. Burchard	Jefferson
1935-36	G. W. Vergeront	Dane

Prepare now for your summer  
milk season by stocking up with

# New Bovinol

it's GOOD for milk profits . . .

## BAD for flies

Milk yield falls off when flies torment your cattle. The easiest, quickest, and most efficient method of getting rid of flies is to use New Bovinol.

Apply New Bovinol each morning. Your cattle will feed normally and unmolested all day—their milk yield and your profits will remain normal.

New Bovinol is a boon to dairy farms—it repulses flies and insects. Kills those which are reached by its spray—yet it is harmless to cattle and humans.

**"Stan," your Standard Oil agent, says:**  
"New Bovinol has pleased a lot of dairy farmers on my routes. It's easy to apply with the No. 435 Bovinol Sprayer—and it brings results that show on the profit side of the ledger. I recommend using Superla Insect Spray to keep flies out of the milk house, too. There's a combination that works every time!"

For all farm petroleum requirements—in the field, on the road, in the home—Genuine Standard Oil Products.

### MOTOR OIL

Iso-Vis "D"  
Polarine  
Stanolind

### MOTOR FUEL

Standard Red Crown  
Solite with Ethyl  
Stanolind

### TRACTOR FUEL

Standard Tractor Fuel  
Stanolind H.S.  
Diesel Fuel

### PERFECTION KEROSENE

### SUPERLA CREAM SEPARATOR OIL

### SEMDAC LIQUID GLOSS

### SEMDAC FLOR-GLAZE

### EUREKA

### HARNESS OIL

### COMPOUND

### NEATSFOOT HARNESS OIL

### EUREKA

### BELT DRESSING

### STANDARD GREASES

Pressure Gun Grease  
Cup Grease  
Fibre Grease

### FINOL DENDROL

### DORMANT SPRAY OIL

### MICA AXLE GREASE

### STANOLIND SNOW WHITE PETROLATUM

### SUPERLA INSECT SPRAY

Check your needs now—be ready when  
"Stan" drives in

# STANDARD OIL COMPANY

Makers and Distributors of a full line of petroleum products for the farm, at fair prices

# SECOND ANNUAL

●  
**State - Wide Dairy Day**  
**MARCH 23, 1937**

●  
**PROCLAMATION**

●

“WHEREAS, dairying has developed to such an extent in Wisconsin that one-half of the gross income of our farmers is now derived from milk and its byproducts; and

“WHEREAS, Wisconsin has attained world-wide recognition as the leading dairy state of America as a result of this development; and

“WHEREAS, equally well known throughout the world is the high quality of Wisconsin’s dairy products, and

“WHEREAS, the Wisconsin Dairymen’s association, a statewide organization of dairymen devoted to improving the welfare of Wisconsin farmers ever since it was organized in 1872, will hold its annual convention at Oshkosh on March 23 and 24, 1937, and

“WHEREAS, this is a timely occasion to remind our citizens of the importance of dairying to Wisconsin,

“NOW, THEREFORE, I, Philip F. La Follette, governor of the state of Wisconsin, do hereby designate and proclaim March 23, 1937, as the second Wisconsin Dairy day, and urge that the occasion be observed with fitting exercises in recognition of Wisconsin dairy farmers and the superior dairy products they produce.”

(Signed) PHILIP F. LA FOLLETTE,  
Governor.

*Hotel*

*Raulf*

**Oshkosh & Portage**

◆ ◆ ◆ ◆ ◆ ◆ ◆ ◆ ◆ ◆  
**OFFICIAL HEADQUARTERS**

*Wisconsin State*

*Dairymen's*

*Association*

◆ ◆ ◆ ◆ ◆ ◆ ◆ ◆ ◆ ◆  
**WISCONSIN'S  
FINEST NIGHT CLUB**

**Dance & Floor Show**

**Every Night**

Bring the Ladies

**Where Quality Food Prevails  
and Friends Meet**

**Ed. A. Boycks, Manager  
HOTEL RAULF**

# PROGRAM

## 65th Annual Dairymen's Association Convention and Second All-State Dairy Day

**Recreation Hall Tuesday, March 23**

### MORNING SESSION

Frank Wilkinson, Oshkosh, Presiding

9:30-12:00—Special Program for Junior Dairymen, Richard Brackett, Elk Mound, Presiding

10:00—Prof. James W. Lacey, Extension Specialist, College of Agriculture, Madison, Wis.

Subject—"Meat Cutting Demonstration"

11:00—John D. Jones, Jr., General Agent, Farm Credit Administration, St. Paul, Minn.

Subject—"The Farm Credit Administration Program"

12:00—Breed Luncheons

### AFTERNOON SESSION

L. B. Stevens, Oconomowoc, Presiding

1:15—Karl B. Musser, Sec'y. American Guernsey Cattle Club, Petersborough, New Hampshire

Subject—"The Pure Bred Breeder and His Responsibilities"

2:00—Prof. D. M. Seath, Dairy Specialist, Kansas State College, Manhattan, Kansas

Subject—"Herd Sires and Head Work"

2:45—Fun for Everyone, Pepmaster Jack Frost, Junior Editor of Hoard's Dairyman, Ft. Atkinson, Wis.

3:00—Dr. J. F. Kendrick, Ass't. Chief, Division of D.I.H. Investigations, Washington, D. C.

Subject—"Dairy Herd Improvement through Bull Associations"

### AT THE ARMORY

7:00—Dairy Feast and Fun Fest, Toastmaster, Dr. James S. Healy

Guest Speaker—The Honorable Philip F. La Follette, Governor of Wisconsin, Madison

## Recreation Hall Wednesday, March 24

### MORNING SESSION

G. M. Householder, Madison, Presiding

10:00—Dr. O. S. Aamodt, Dept. of Agronomy, University of Wisconsin, Madison

Subject—"The Breeding and Production of New Pasture and Forage Plants for Wisconsin"

11:00—Dr. Walter Wisnicky, State Veterinarian, Madison, Wisconsin

Subject—"Bang's Disease—Questions and Answers"

12:00—Special Group Luncheons

### AFTERNOON SESSION

Harry E. Hill, Sheboygan Falls, Presiding

1:15—Lynn Edminster, Economical Analyst, Dept. of State, Washington, D. C.

Subject—"The Reciprocal Trade Treaty and the Wisconsin Dairymen"

2:15—Annual meeting, Business session, Election of officers of the Wisconsin Dairymen's Association

Halls Courtesy of Oshkosh Banks



FOR  
GOOD FOOD  
— AND —  
DRINK

Stop at

THE PEACOCK  
Restaurant and Tap Room

Next to First Nat'l Bank — Oshkosh, Wis.

WELCOME  
Wisconsin Dairymen's Association

May your sixty-fifth annual convention  
be a Success.

Make this store your headquarters  
while in Oshkosh

**JCPenney Co.**  
A NATION-WIDE INSTITUTION  
475 DEPARTMENT STORES

80-86 Main Street — Oshkosh, Wis.

# Secretary's Report

February 1, 1935 to February 1, 1936

In the past year a sincere attempt has been made to help breeders of dairy cattle go forward with their respective breeds, to encourage Junior dairymen and future farmers to adopt approved dairy practices, and to build the dairy industry in Wisconsin in every way, shape, and manner possible under our limitations of personnel and budget.

## Annual Meeting

The annual meeting of the Association which was held at Janesville, March 25-26, 1936, did much to revive the interest of the dairymen in Wisconsin in better methods and in effective means of increasing dairy farm income. More than 1,500 farmers attended this meeting. National speakers were brought to the state by the Association, including Professor Wilbur Fraser of Illinois, Dr. O. E. Reed of Washington, D. C., and J. G. Hays of Michigan. Dr. Hart of Wisconsin also appeared on this program. Cooperating with the State Department and Markets an intensive window display campaign did much to increase the consumption of dairy products in and about our convention city. One grocer alone ordered a ton of cheese from the factory where the award given by the State Department of Agriculture and Markets was made.

## Year Book

In connection with the annual meeting, a 1937 Year Book was published listing the sources of valuable breeding stock in Wisconsin. 6,000 copies of this booklet were distributed in Wisconsin and twenty four dairy states.

## Production Shows

The Association this year pioneered a farmers' type of show which should build the interest of the Wisconsin breeders in exhibiting dairy cattle and improving the county and state fairs. At the fifteen shows held more than 322 breeders exhibited 1162 animals of their own breeding. A ring side of 32,100 farmers were present at these shows.

The directors of the Dairymen's Association have felt it was important to the future of Wisconsin agriculture to revive the breeder's interest for exhibiting his cattle and having their individual merits measured in the company of their neighbors.

In an attempt to meet problems which have kept large numbers of breeders from exhibiting at fairs, the Production Show has been more or less handled as follows:

**First**, only cows with a production record or young animals and bulls out of cows with records have been shown. Records have been prominently displayed but play no part in the type placing.

**Second**, all extra fitting, feeding, other than cows receive on the well-managed dairy farm have been discouraged. When being placed, cows are tied to a "judging line" where the cow is on her own. Classifying as ex-

# The Henderson-Hoyt Co.

OSHKOSH, WIS.

**A Friendly Store with Friendly Employees**

**WELCOMES**

**The Wisconsin Dairymen's Association**

to

**Oshkosh, March 23-24**

**BEST WISHES**

*Write*



*Before*

**BUILDING-REMODELING  
— EQUIPPING —  
VENTILATING**

**Dairy or Horse Barn  
Hog or Poultry House**

**James Mfg. Co.**

**Fort Atkinson — Wisconsin**

cellent, good plus, good, fair, and poor permits standardizing an award so that it means something and teaches the ring side to distinguish between worth while points and those not in keeping with good type standards.

**Third**, a one day show has encouraged bringing out the best cows. They don't even miss a milking at home. In shows thus held the aged cow class has been many times as large in numbers as the calf class.

**Fourth**, no premiums have been offered for bringing out cows to Production Shows. Farmer breeders, however, are assured that there will be no commercial exhibits, no carnival, no other interest at the show other than their cattle. Cows have the spotlight 100%. Certificates of a permanent nature carrying the signature of the judge and Dairymen's Association officials are presented to each animal exhibited at the show.

Refinements and improvements suggested by committees appointed will be added to the 1937 program. Included will be a Judge School for those who will do the rating.

### **D.H.I.A. Fieldmen Awards**

D.H.I.A. Fieldmen awards have been made to stimulate the more careful keeping of valuable breeding records. Recognition awards have been given to five Wisconsin farmers who have made great contributions to the betterment of the dairy industry in this state.

### **Herd Builder**

A monthly publication, the "Herd Builder," has been given circulation in Wisconsin and 40 other states. This publication regularly carries stories that tell how Wisconsin farmers are meeting the problems of the day and its purpose is to challenge the more constructive and more worth while effort which in the end works a benefit to the Wisconsin dairy farm family.

### **Report of Fieldman A. C. Thomson**

Better Bull Program—43 meetings, 22 counties, 1,648 attendance, 4494 miles.

Production Shows—36 meetings, 20 counties, 31,624 attendance, 5658 miles.

Vocational Agriculture Departments—48 meetings, 2,123 attendance, 6347 miles.

D.H.I.A.—11 meetings, 477 attendance, 1322 miles.

4-H Clubs—12 meetings, 2,360 attendance, 2790 miles.

Other meetings, Civic Groups, Breed Associations, etc.—18 meetings, 5,834 attendance, 1980 miles.

Conferences: County Agricultural Agents, Vocational Agriculture, D.H.I.A. Fieldman and W.D.A. officers—125 in 34 counties, 3,491 miles.

Farm visits—175 in 28 counties, 1,005 miles.

Herd analysis—8 herds, 5 counties, 980 miles.

Bull trades—assisted 8 breeders in 4 counties, 864 miles.

Fair Exhibits—6 D.H.I.A. exhibits, 4 counties, 280 miles.

Fairs—8 fairs in 8 counties, 1,132 miles.

Total meetings, 168; Attendance, 44,066; Miles traveled for meetings, 22,591; Total contacts, 46,097; Total miles traveled, 30,343.

26 counties working on Better Bull Program, 126 Vocational Agriculture Instructors contacted on a testing program.

106 Vocational Agriculture Departments received material for testing program including 20,000 Dairy Production and Breeding Records.

#### **Report of Fieldman Erwin Sutton**

(Employed jointly with Wisconsin College of Agriculture)

Meetings were held in 24 counties. An attendance of 1,279 were present at 52 meetings. Mileage traveled in attending same, 3,818.

A total of 93 conferences with 257 attending, from 42 counties made necessary 9,496 miles of driving.

425 farm visits were made in 42 counties, driving 7,891 miles.

Total miles driven, 16,768. Total contacts at conferences and meetings, 1,956.

#### **Travel Report of Secretary J. C. Nisbet**

Secretary J. C. Nisbet has attended 45 conferences in the interest of the Association. At these conferences there were 147 people. A total of 43 meetings were attended by 7710. Total miles driven for the Association, 13,427.

#### **Office**

The office has written about 6,000 letters, made out 289 Ton Butterfat certificates, 1,162 Production Show certificates, and distributed 55,200 pieces of printed matter.

#### **Cooperators**

The Dairymen's Association program has been much more effective than it otherwise could have been had it not been for the splendid cooperation of other agencies in the state. We would particularly mention the College of Agriculture, State Department of Agriculture and Markets, Vocational Agriculture Departments, D.H.I.A. Fieldmen, Mount Hope Farm, the various dairy cattle breeding associations, the Pure Milk Association of Janesville, the National Cheese Producers Federation of Plymouth, the Swiss Cheese Producers of Monroe, the Milwaukee Cooperative Milk Producers of Milwaukee, the Barron Cooperative Creamery of Barron, the Richland Cooperative Creamery of Richland Center, the Fort Farms Co-Operative of Fort Atkinson, and the Golden Guernsey Dairy Co-Operative of Milwaukee, and others.

#### **4-H and Future Farmers**

Much time and effort has been given to young farm folk of Wisconsin.

In the 4-H Dairy Club work our program has been to cooperate with the Club Department at Madison in building a 1000-day project which includes production records. Our contacts with the Future Farmer and Vocational Agriculture work has been to improve the record keeping procedure so that records kept can be used to fuller extent in developing a constructive breeding program.

To interest the young people of our state and in cooperation with Mount Hope Farm, Williamstown, Mass., an award of a trip to Mount Hope Farm and breeding es-

tablishments in the east was given to the state 4-H Dairy Club and Vocational Agriculture winners. Ben Dibble of Pewaukee and Gerhard Boss of Oshkosh were given an extensive trip during July.

### Ton Butterfat Club

A file containing the life production on cows producing in excess of a Ton of Butterfat, has been made possible through the splendid cooperation of the D.H.I.A. Fieldmen. A total of 289 are now on file.

The program for next year as set up by committees who have made a special study of the possibilities of our association and the need of the Wisconsin dairy industry has been divided into three divisions.

- 1—Bull Association Organization.
- 2—Production Shows.
- 3—Junior Herd Improvement Associations.

The division of work was set up in cooperation with the Wisconsin College of Agriculture, and the State Department of Agriculture and Markets, and Wisconsin State Board of Vocational Education.

## FINANCIAL STATEMENT

July 1, 1935 to July 1, 1936

### RECEIPTS

By Balance July 1, 1935 .....	\$2,434.14	
Legislative Appropriation .....	6,000.00	
Membership Fees and Interest .....	942.75	
Supplies .....	144.97	
Advertising .....	400.50	
		\$9,922.36

### EXPENDITURES

Exhibits advertising Wis. Seed Stock...\$	407.92	
Annual meet. and extra clerical serv.	533.87	
Pay roll (Sutton, Thomson, Eustis) ..	2,923.40	
Expense paid by Secretary .....	359.70	
Miscellaneous and Office .....	181.05	
Postage .....	429.14	
Herd Builder publication .....	207.70	
Printing and Supplies .....	820.65	
County promotion work .....	277.00	
Testing awards .....	272.00	
Travel expense—Thomson .....	548.18	
Travel expense—Sutton .....	350.00	
		\$7,310.61
Balance on hand July 1, 1936 .....		\$2,611.75

The above is a financial statement of the State Dairymen's Association made to the Department of Agriculture and Markets in compliance with the law under which our 1936-1937 legislative appropriation is requested.

Signed

H. E. HILL, President  
 J. C. NISBET, Secretary  
 Audit Report, July 20, 1936.

I have examined the records of receipts and disbursements of the Wisconsin Dairymen's Association for the fiscal year ending June 30, 1936. We have been able to verify the figures submitted by the Wisconsin Dairymen's Association, over the signatures of Mr. H. E. Hill, Presi-

dent and Mr. J. C. Nisbet, Secretary. Attached hereto is the report which they submit.

In my opinion the attached list of receipts and disbursements is an accurate statement of the funds that have been handled by the Association during the period from July 1, 1935 to and including June 30, 1936. It appears that all disbursements are in line with the functions for which the State Appropriation running to the Wisconsin Dairymen's Association was made.

It is, therefore, my recommendation that the Department of Agriculture and Markets request the Department of State to make available to the Wisconsin Dairymen's Association the \$6,000 appropriation for the fiscal year ending June 30, 1937.

Respectfully submitted,

C. N. WILSON, Principal Accountant.

July 20, 1936.

This is to certify that the officers of the Wisconsin Dairymen's Association have in accordance with Chapter 96.69 of the laws of 1935, filed with the Department of Agriculture and Markets a report of the activities of said association for the preceding year and that the report has been carefully examined and the Department is satisfied that the business of said association has been efficiently conducted and was carried on in the interests of the special agricultural activities for which the said association was organized and that they are entitled to the funds as appropriated under Chapter 20.61-5 of the laws of 1935. (\$6,000)

(Signed) CHAS .L. HILL, Chairman,  
Department of Agriculture & Markets.

# SIMPLEX

## Barn Equipment

STEEL STALLS  
STANCHIONS  
LITTER & FEED  
CARRIERS  
HORSE STABLE  
EQUIPMENT  
WATERING  
BOWLS

**F. Rassmann Mfg. Co.**  
Beaver Dam, Wis.

# WHO'S WHO



## **Alphabetical List of Wisconsin Dairymen's Association**

### **Active Member Breeders**



Most of these dairymen are testing their herds continuously year in and year out . . . They are proving the worth of each cow as an economical producer of butterfat . . . But more, they are proving the breeding worth of sires and dams, and building not only farm income, but the reputation of Wisconsin dairy cattle.





Wisconsin Ayrshires are noted for their freedom from disease, heavy production and good type—many herds from which to choose.

# WHY

## *The Ayrshire*

### *Is The Cow for Wisconsin*

### *Farmers*

1. Heaviest Producer of 4% Milk—  
at least feed cost.
2. Wears like iron — More 100,000  
pound producers of 4% milk than  
any other breed.
3. Milk in demand for special market  
purposes.
4. Good grazers — hardy — rugged.
5. Correct type . . sound udders —  
the buyers choice.

For literature or help in locating stock write

AYRSHIRE BREEDERS  
ASSOCIATION

BRANDON — VERMONT

# .. AYRSHIRES ..



Armstrong, J. W., Neenah .....	Grade	25
Brown, L. C., Sylvan .....	Registered	24
Cross, A. J., Oshkosh .....	Grade	28
Ewers, Forest, Richland Center .....	Registered	22
Hacker, Robt., and Sons, Brillion .....	Registered	35
Ihde, Herman, Neenah .....	Registered	20
Krenke, Henry, Freemont .....	Grade	8

## AYRSHIRES

Ayrshires T.B. and Blood Tested 11 yr. D.H.I.A.

### RED AND WHITE STOCK FARM

H. F. Krenke —:— Freemont, Wis., R. 2

Matznick, Wm. F., Chilton .....	Grade	15
Richardson, Harry, Spring Green .....	Registered	32
Rossmann, Joe, West Bend, R. 3 .....	Grade	18
Schroeder, Fred, Grafton .....	Grade	22
Schwalbe, Theodore, Chilton, R. 4 .....	Grade	11
Vallesky, E. H., Collins, Box 94 .....	Grade	18
Vallesky, G. W., Collins, Box 92 .....	Grade	17

## AYRDALE FARM

### Ayrshires

#### HERD SIRE

Buttercup's Pride of Fernbrook No. 51168

Av. Test % B.F. of Dam 4.3

Son of Penshurst Red Star Lad

Sr. Sire Ayrdale's Radiant

Av. Test % B.F. of Dam 4.4

#### WISCONSIN

CHEESE AND BUTTER

MAKE

GOOD MEALS BETTER

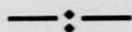
J. W. ARMSTRONG & SONS, Prop.

Phone 1-F-3

R. 1, Neenah, Wis.

# BROWN SWISS

## Means Dairy Profits



Bulls cross well on all breeds, quickly upbuild common and grade herds. Surplus calves make fine veal. Free literature describes this hardy, beautiful, high producing four percent breed.



### Brown Swiss Association

BELOIT, WISCONSIN



Are you interested in the World's Largest Producers of 4.0% Milk?

Write the Wisconsin Brown Swiss Breeders Ass'n. for a list of stock for sale by its members.

Brown Swiss Breeders join the Wisconsin Brown Swiss Association at \$2.00 per year. Get the most advertising you have ever gotten for \$2.00.

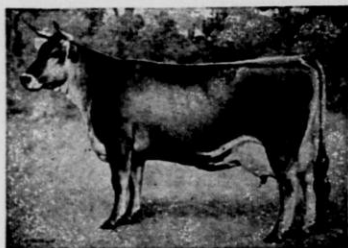
Henry Krueger, Jr., Sec.-Treas.

Beaver Dam



Wisconsin

B  
R  
O  
W  
N



S  
W  
I  
S  
S

Allyn, J. P., Delavan	-----Registered	30
Bentz, Otto, Cedarburg	-----Reg.-Gr.	28
Bergman, Harry, Elmwood, R. 2	-----Grade	17
Bonlender, Raymond, Campbellsport, R. 3	-----Grade	19
Bork, Robt., Fremont	-----Grade	14
Drews, Alvin A., Burnett, R. 1	-----Grade	29
Endres, Elroe, Slinger	-----Reg. & Gr.	14
Evans, Willard R., Waukesha	-----Registered	25
Ferg, A. R., Manawa	-----Registered	10
Freeman & Elliot, Beloit, R. 6	-----Registered	19
Fromm, Paul, West Bend, R. 3	-----	10
Gasteyer Bros., Elmwood, R. 2	-----Grade	18
Ginsbach, Frank, Elmwood	-----Reg. & Gr.	14
Hemb, Fred, Newton	-----Registered	24
Hoyman, M. G., Neenah, R. 2	-----Reg. & Gr.	13
Hubli, Frank, Oshkosh, R. 5	-----Grade	32
Hughes, Robert, Hillsdale	-----Grade	9
Inman, Ira, Beloit, R. 6	-----Registered	20
Jensen, Emil, Menomonie	-----Registered	16
Kersten, Dr. N. M., De Pere	-----Grade	56
Kivilin Bros., Brooklyn, R. 2	-----Reg. & Gr.	51
Knoener, Carl, Sheboygan	-----Reg. & Gr.	23
Kuester, John, Newton	-----Registered	19
Kurtz, Theo., Cedarburg	-----Registered	7
Leach, Joe, Burlington	-----Reg. & Gr.	23
Miske, Rudy, Kewaskum, R. 3	-----Grade	14
Monette Bros., Elmwood, R. 3	-----Grade	22
Nelson, B. A., & Sons, Brooklyn, R. 3	-----Registered	25
Noegli, John, Lodi	-----Reg. & Gr.	35
Reinert, Elmer, Larsen	-----Grade	16
Reinke, Jac., Elmwood	-----Grade	31
Renner, John, Elkhorn	-----Registered	23
St. Francis Monestary, Burlington	-----Grade	12
Schmid, Mrs. Edna, Monroe	-----Registered	25
Schmidt, Emil, Manitowoc, R. 2	-----Reg. & Gr.	25
Schneider, Henry W., Chilton, R. 4	-----Registered	15
Schoeder, Peter, Elmwood	-----Grade	17
Stauffacher, Mrs. John, Darlington	-----Reg. & Gr.	66
Stefl, Joe J., Mishicot, R. 1	-----Grade	18
Von Der Oke and Dargel, Reedsburg	-----Registered	15
Wallace, Fred, Beloit, R. 7	-----Grade	18
Witt, Louis, West Allis, R. 4	-----Reg. & Gr.	21
Yahnke, Otto and John, Burlington, R. 4	-----Grade	16

## VERNON STOCK FARM

Viroqua Wisconsin

Orbec D. Sherry, Owner

Home of the "Janes" the outstanding Brown Swiss family  
 . . . daughters and grand daughters of the world's record  
 grand champion Jane of Vernon.

Our present sire is **Bubbling Over of Walhalla**, a son of  
 the show ring winner **Beauty Boy Bubbles of Walhalla**.

**COME TO VERNON STOCK FARM FOR YOUR NEXT SIRE**

**PRICHARD — and — KUHLMAN**



**KING OF BONIFACIOUS, 193333**  
1st and Junior Champion  
National Dairy Show, 1925

**Route 5, Eau Claire, Wisconsin**

**REGISTERED AND  
GRADE GUERNSEYS**

**TUBERCULOSIS  
and  
BANG'S DISEASE  
FREE**

**STOCK FOR SALE  
at  
FARMERS' PRICES**



**REX MAUD OF CHIPPEWA, 244963**  
Photo Taken Dec., 1936. A Product of the  
Chippewa Valley

**OUR PRESENT  
HERD SIRE**

**“BOULDER BRIDGE BUTTER BOY”**

**HIS SIX NEAREST DAMS AVERAGED 11,731.30 lbs. MILK AND 660.20 B.F.**

# .. GUERNSEYS ..



Allen, Everett C., Cameron .....	Grade	10
Alton, Paul, Rice Lake .....	Grade	10
Amdall, Andrew, Dallas .....	Reg. & Gr.	15
Anderson, Dan A., Holcombe .....	Grade	15
Anderson, Dave S., Cumberland .....	Mixed	10
Andrew, Roman, St. Cloud .....	Grade	12
Arndt & Cline, Barron .....	Grade	20
Atlasta Farm, C. T. Bundy, Menomonie .....	Registered	24
Babb and Sons, John H., Richland Center .....	Registered	22
Baensch, Emil, Manitowoc .....	Grade	12
Baker, Geo., Chetek .....	Grade	19
Baleen, John, Oconomowoc .....	Registered	20
Balson, Chas., Fond du Lac, R. 1 .....	Reg. & Gr.	21
Bandli, Henry, Rice Lake .....	Registered	14
Barstad, Carl, Barron .....	Grade	30
Barta, Calvin, Two Rivers, R. 1 .....	Grade	15
Bartell, Ervin, Cedarburg .....	Grade	22
Bartell, Reinard, Thiensville .....	Reg. & Gr.	17
Bartlett, C. M., Barron .....	Reg. & Gr.	10
Basse, Wm. H., West Allis, R. 5 .....	Registered	17
Bauch, Fred, Poskin .....	Grade	11
Baumgartner Bros., Wrightstown .....	Registered	47
Beale and McConnel, Madison, R. 4 .....	Registered	21
Becher, Conrad J., Hortonville, R. 1 .....	Grade	20
Becker, George, Stoughton, R. 1 .....	Registered	8
Becker, J. R., Cameron .....	Grade	20
Becker, Walter, Ft. Atkinson .....	Registered	11
Becker, Wilbur, Ft. Atkinson .....	Registered	12
Beebe, M. W., Oshkosh .....	Reg. & Gr.	22
Behnke, Edwin, Quarry .....	Grade	10
Battig, Edw., Ripon, R. 2 .....	Reg. & Gr.	20
Behrens, Bernhard, Grafton .....	Registered	15
Bergeman, Harry, Elmwood, R. 2 .....	Grade	17
Berger, Henry, Chetek .....	Grade	14
Bergeson, Albert, Barron .....	Grade	11
Bergeson, Oscar, Barron .....	Grade	7

## Fawndaway Guernseys

D.H.I.A. 10 yrs. Av. 342.7 Fat 5.07% Test

Bred for Type and Production

Negative T.B. and Bang's Test

Wilbur M. Becker - - Ft. Atkinson, Wis.

# BERENDSENDALE

**Phlox**

—:—

**Wisconsin**

## 45 Pure Breed Guernseys

Will sell cows, heifers, and bull calves.

**Herd Sire:** Orpha's Governor of Elm—92429

**Sire:** Imp. Governor of Myrtle Place II—40985. King's Cup 1912. Champion Cup and Challenge Cup, 1915. Silver Cup, 1913, 1st prize bull 1912, 1913, 1916. (On Guernsey) 14 A.R. & 14 Island Record Daughters including:

**Imp. Nora of the Gele II, A.R. 10447**—Milk 15,428 lbs., Fat 673 lbs., Class A.

**Imp. Governor's Maggie, A.R. 14520**—Milk 14,967 lbs., Fat 667.8 lbs. (Class A)

**Maid of Etura Lodge, A.R. 786**—Milk 11822.25 lbs., Fat 659.36 lbs. (Class B).

**Mowenna du Bas Sejour A.R.**—Milk 11013.25 lbs., Fat 615.26 lbs. (Class A).

**Dam:** Pearl's Orpha 98429—Milk 15149.60 lbs.; 828.94 lbs. fat. (A world's record in Class DD when made). Other records

14,795.00 Milk; 744.10 fat  
14,949.80 Milk; 725.80 fat  
14,750.50 Milk; 724.50 fat  
14,508.40 Milk; 708.10 fat

### RECORDS OF COWS IN HERD

Name	No.	Milk	Fat	Days	Age
Stella of Maple Wood	_236016	14,137	737.2	352	at 9 yrs.
Betty of Berendsendale	322500	10,760	620.9	327	at 6 yrs.
Daisy of Berendsendale	312894	8,934	556.2	283	at 6 yrs.
Flora of Berendsendale	399220	9,104	500.8	290	at 5 yrs.
Coleen of Berendsendale	-----350984	9,163	513.7	278	at 5 yrs.
Flossie of Berendsendale	-----425726	8,206	483	352	at 2 yrs.
Lassie May of Berendsendale	----451182	9,058	438.7	355	at 2 yrs.
Orpha's Jenet of Berendsendale	----468035	8,324	406.6	312	at 2 yrs.
Jane of Berendsendale	_403899	8,271	420.6	303	at 4 yrs.
Susan of Berendsendale	321127	9,026	451.9	291	at 6 yrs.
Maude of Berendsendale	42575	8,342	452.9	345	at 4 yrs.
Peach of Berendsendale	403898	7,250	424.7	326	at 5 yrs.
Sally of Berendsendale	431497	7,916	420.2	324	at 4 yrs.
Cherry of Berendsendale	428211	6,754	361.6	247	at 4 yrs.
Orpha's Spot of Berendsendale	----473999	7,694	361.4	271	at 2 yrs.
Andy's Jenny of Berendsendale	----459740	7,407	356.6	256	at 2 yrs.

These records are made on G.H.I. Twice-a-day milking  
T.B. Accredited No. 3411

Negative for Bang's Certificate No. 424

Beyer, Hans, Mishicot, R. 1	Grade	22
Blondy and Blondy, New London	Registered	30
Bodden, Joe, Campbellsport, R. 3	Grade	9
Borchardt, Herman, Two Rivers, R. 1	Grade	15
Bordner, Russell, Chetek	Reg. & Gr.	14
Borgeson, B. J., Barron	Grade	8
Braun, Walter, Kewaskum, R. 3	Grade	15
Breitrick, O. H., Appleton, R. 2	Registered	15
Britts, J. J., Hillsdale	Grade	24
Brown, Mrs. E., Barron	Grade	21
Brown, John, Chetek	Grade	25
Brown, Russell, Richland Center	Reg. & Gr.	24
Brussewitz, Levern A., Black Creek, R. 1	Rcg. & Gr.	16
Buck, Howard, Barron	Grade	16
Burchard & Peters, Ft. Atkinson	Reg. & Gr.	17
Burhop, Fred, Port Washington	Reg. & Gr.	17
Bungert, Roy, Hortonville, R. 1		20
Capener, Clifford C., Est., Baraboo	Registered	14
Carvious, Howard, Marinette	Grade	17
Casper, John, New Holstein, R. 2	Grade	14
Casper, Math, New Holstein, R. 2	Grade	20
Chapin, A. J., Brandon, R. 2	Reg. & Gr.	27
Chapman, Mel, Barron	Grade	12
Chapple, J. J., Eden	Grade	14
Christensen, Carl, Peshtigo	Grade	15
Christensen and Madsen, Oregon, R. 2	Grade	38
Churchill, Harold, Rock Elm	Reg. & Gr.	20
Citizens State Bank, Whitewater	Grade	30
Clark, Geo. M., Janesville	Grade	16
Clausen, Edw., Omro	Grade	11
Clausen, Herman, Bruce	Grade	21
Clausing, Gust, Cedarburg	Reg. & Gr.	24
Clausing, Jul. Est., Grafton	Reg. & Gr.	32
Clift, Delbert L., Watertown	Reg. & Gr.	9
Coburn, O., Whitewater	Reg. & Gr.	28
Coburn & Rasey, Beloit, R. 4	Grade	47
Coleman, Wallace, Bruce	Grade	11
Connell, C. J., Germantown	Grade	23
Conrad, Walter H., Elkhart Lake, R. 2	Grade	15
Cook, Henry, Burlington, R. 4	Grade	11
Cordes, Wm., Comstock, R. 1	Grade	17
Cowan, L. W., Oshkosh	Reg. & Gr.	46
Cowin, Dillard, Chetek	Reg. & Gr.	18
Craig, O. P., Mukwonago	Registered	25
Crandall, Rowley, Ladysmith	Grade	9
Dank, Frank, Elroy	Grade	24
Darling, Mrs. E., Oconomowoc	Grade	11
Davidson Bros., Waukesha	Reg. & Gr.	36
Dietz, Geo., Appleton, R. 2	Reg. & Gr.	14
Dorn Bros., New Holstein	Grade	14
Dorn, Nick, New Holstein, R. 2	Grade	13
Dougan, W. J., Beloit, R. 7	Reg. & Gr.	50
Draheim, Richard, Chilton	Grade	14
Duncan, Claude A., Cumberland	Grade	13

## FAHRNWALD FARM

### Guernseys

#### Six Years D.H.I.A. Testing

Present Herd Sire Backed by Five Proved Sires

Splendid young breeding bulls for sale at all times.

When interested in a good young bull, why not drop us a line

Herd T.B. and Bang's Tested.

FAHRNWALD FARMS

—:—

OSHKOSH, WIS.

Robt. J. Caldwell, Mgr.



## EAU CLAIRE COUNTY GUERNSEY BREEDERS ASS'N.

invite you to visit their herds when in need of females and males of quality.

These herds have been culled and are doing good work in the D.H.I.A. They are using bulls whose dams have records as high as 745 lbs. fat Class A., and sired by bulls such as

Moose Valley Aristocrat 186587

Langwater Waldorf 128541

Caumsett Harvester 145445

Hilltop Fashion Butterfat 192481

and others of the same class and type.

Write for Detailed Information

V. L. DICKINSEN, President

Augusta, Wisconsin

O. E. Shiffer, Vice-Pres.

John F. Stallman, Sec.-Treas.

Eau Claire, Wisconsin

Elk Mound, Wisconsin

## Buying Guernseys?

The Dunn County Guernsey Breeders Association offers pure bred and grade cows for sale; also pure bred sires. Some of the outstanding Guernsey herds of Wisconsin are located in Dunn County. Herd averages on twice a day milking run as high as 400 lbs. of fat. If interested in purchasing Guernsey cattle, write

**D. P. HUGHES**

Secretary of

**GUERNSEY BREEDERS ASS'N**

**Menomonie, Wisconsin**

Dusel, Albert, Almena, R. 1	Reg. & Gr.	22
Edwards, J. B., Woodworth	Grade	22
Ehde, John, Coleman	Grade	24
Eiler Bros., De Pere, R. 2	Registered	15
Ellison, Carl R., Barron	Grade	12
Elzinga, Henry, Ladysmith	Grade	15
Enerson, Eli, Barron	Registered	8
Erdmann, L. C., Jefferson	Reg. & Gr.	12
Ertte, John, Elmwood	Grade	9
Ewers, Glen, Richland Center	Grade	12
Fahrwald Farm, Oshkosh	Reg. & Gr.	31
Feaster, Jno., Richland Center	Grade	13
Felton, H. L., Richland Center	Reg. & Gr.	26
Fiedler, Ray, Oconomowoc	Grade	14
Fischer, Leonard J., Brillion, R. 2	Reg. & Gr.	13
Fitzgerald, Gerald, Cameron	Reg. & Gr.	19
Flasch, Fred, Cumberland	Grade	10
Forry, Lloyd, Barron	Grade	14
Fox, Mrs. Alice M., Cornell	Grade	24
Fox, F. E. & Son, Waukesha	Registered	45
Francois, Elmer, Waukesha	Reg. & Gr.	45
Franklin, Fred, Spring Valley	Grade	13
Frauenheim, O. R., Random Lake	Registered	27
Frederick, John, Appleton, R. 1	Registered	12
Freeman & Ludeman, Fort Atkinson	Reg. & Gr.	21
Fromm, Paul, West Bend, R. 3	Grade	10
Fuhrman, Henry, New Holstein, R. 2	Grade	16
Fuhrman, Julius, Spring Valley	Reg. & Gr.	10
Gasteyer Bros., Elmwood, R. 2	Grade	18
Gasteyer, E. J., Elmwood, R. 2	Grade	13
Geissler, George, Johnson Creek	Grade	13
Geissler, Harry, Watertown	Grade	14
Geizendanner, John, Barron	Reg. & Gr.	21
Gerloff, R. W., Barron	Reg. & Gr.	13
Gilbertson, Ben, Barron	Grade	23
Gittem, Ed., Franksville,	Reg. & Gr.	17
Goddard, Dr. W. F., Barron	Reg. & Gr.	18
Gohl, Wm., Comstock, R. 1	Grade	6
Gordon, James, Oconto	Grade	14
Gordon, N. S., Poskin	Reg. & Gr.	11
Graf, Waldo, Kiel, R. 1	Reg. & Gr.	11
Grall, John, Hortonville, R. 1	Grade	25
Greene, R. W., Berlin, R. 2	Grade	14
Greenwald, Mrs. J. Oscar, West Allis, R. 4, Box 446	Registered	20
Griffin, J. M., Janesville, R. 7	Grade	20
Griswold, Harry W., West Salem	Registered	30
Gruber, Erwin, Manitowoc, R. 6	Grade	15
Gruetzmacher, Herman, Troy Center	Grade	15
Grunwaldt, Aug. & Son, Black Creek, R. 3.	Reg. & Gr.	18
Guardian Farm, Whitewater	Grade	30
Guelig, Mrs. Theresa, Chilton	Grade	25
Guetschow, Edward, Mishicot, R. 1	Grade	12
Gulikson Bros., Manitowoc	Grade	16

## HELENDALE GUERNSEYS

During more than Thirty Five years of A. R. testing we have made many large records. In recent years all testing has been in the Triple Letter Herd Classes.

Write us for prices on bulls and cows.

### HELENDALE FARM

Wm. L. & Fred R. Erbach, Owners

Athens, Wisconsin

WHEN IN NEED OF  
*Heavy Producing*  
GUERNSEYS

or a

— New Herd Sire —

BACKED BY

Practical Triple Letter  
Herd Test Records (Official)

WRITE OR COME TO

WAUKESHA COUNTY  
GUERNSEY BREEDERS' ASS'N

M. E. Claffey, Sec'y. —:— Waukesha, Wis.

BETTER FARM GUERNSEYS

We developed *Whiteface Beauty of the Rancho*, who has the highest number of Dam and Daughter comparisons. Herd Accredited for T.B., Under Federal Supervision for Bang's. Have done D.H. I.A. Testing since 1922. Limited number of cattle for sale.

Farm located 2 miles south of Port Washington on county trunk highway C, or 1 mile east from intersection of State trunk highway 141 and 60, then 3 miles north on county trunk highway C, to Stone School House first farm on west side of road.

FRED BURHOP —:— GRAFTON, WIS.

# MAPLE VIEW FARM

HERD SIRE—LORIA'S SLOGAN 225655

A son of Langwater Slogan 166129 and a grandson of Langwater Valiant 51868 and Imp. Slogan's Lady Astor of Langwater 149219.

We are offering a few choice sons and daughters of Slogan at reasonable prices.

Everett M. Gray & Son      Richland Center, Wis.

Haase, Christ, Menomonie .....	Grade	37
Hadden, A., Ladysmith .....	Registered	16
Hake, Ira, Menomonee .....	Grade	11
Halderson, J. M., & Son, Beloit, R. 7 .....	Grade	16
Halverson, Mrs. Rena, Rice Lake .....	Registered	12
Halvorson, Albert, Rice Lake .....	Registered	16
Halvorson, Lorentz, Oregon, R. 2 .....	Grade	7
Hammer, Engelbert, New Holstein, R. 2 .....	Grade	18
Hansen, Wm., Barron .....	Grade	14
Hapwood, Wm., Elmwood .....	Reg. & Gr.	13
Hargrave, H. W., Ripon, R. 2 .....	Registered	25
Harris, Jim & Elan Waite, Elkhorn .....	Grade	35
Harris, R. M., Elmwood .....	Reg. & Gr.	10
Hart, Carl, Peshtigo .....	Grade	14
Hartley, H. E., Angus .....	Grade	13
Harvey Est., J. M., Waukesha, R. 2 .....	Registered	30
Havelka, Frank J., Rice Lake .....	Reg. & Gr.	18
Hawes, W. F. & Son, Pewaukee .....	Grade	23
Hayes, Arthur, Chetek .....	Grade	26
Heath, F. C., Barron .....	Grade	30
Hei, Joe, Plum City .....	Grade	18
Hein, Darwin, Elmwood .....	Grade	14
Heinze, Henry F., Haugen .....	Grade	16
Heldstab, Christ, Rice Lake .....	Reg. & Gr.	7
Heldstab, John, Rice Lake .....	Grade	21
Helgeson, Art, Valders .....	Grade	14
Helgeson, Gordon, Valders .....	Grade	18
Hendricks, Ray A, Campbellsport .....	Grade	15
Henning, George, Burlington .....	Grade	18
Hens, Gilbert, New Holstein, R. 2 .....	Grade	8
Hens, Nick, Malone .....	Grade	18

## — GUERNSEYS —

Guernseys      Negative Herd      2 yrs. D.H.I.A.

### HEYNHEIM FARM GUERNSEYS

A. H. Heyn & Son,      —:—      Oshkosh, Wis.

Heyming, Albert, Cameron .....	Grade	8
Heyn A. H., and Sons, Oshkosh, R. 3 .....	Reg. & Gr.	11
Hill, John D., Rosendale .....	Registered	20
Hillside View Farm, Waukesha, R. 2 .....	Reg. & Gr.	25
Hilt, Clem, New Holstein, R. 2 .....	Grade	21
Hintz, Adolph, Cedarburg .....	Grade	16
Hoard Dairyman Farm, Fort Atkinson .....	Registered	24
Hockmuth, Herbert, La Valle .....	Reg. & Gr.	11
Hoff, Ernest, Hillsdale .....	Grade	10
Hoff, Paul, Barron .....	Grade	14
Hoitomt, H. C., Boyceville .....	Grade	13
Holbach, Vincent, Malone, .....	Grade	15
Holm, J. A., Rice Lake .....	Grade	9
Hoppert, Martin J., Sheboygan .....	Reg. & Gr.	20
Horkey, Claude, Hanover .....	Grade	13

T. B. Tested

Bang's Accredited

**ELDERBROOK FARM GUERNSEYS**

(Continuous D.H.I.A. Tested)

Herbert Hochmuth

—:—

La Valle, Wis.

Hovener, Wm., Grafton .....	Grade	20
Howe, John O., Comstock, R. 1 .....	Grade	17
Hulburt, C. H., Waukesha .....	Registered	17
Hunt, Clifford, Barron .....	Grade	10
Huser, Frank, Comstock .....	Reg. & Gr.	28
Huss, Albert, Appleton, R. 4 .....	Registered	27
Isaacson, Rhinehart, Rice Lake .....	Grade	12
Jacobson, Arnie, Viola .....	Grade	23
Jahnke, Wm., Watertown, R. 3 .....	Grade	12
Jamison Bros., Appleton, R. 1 .....	Registered	34
Janes, Clifford, Berlin, R. 2 .....	Grade	16
Jarman, Wm., Sturgeon Bay, R. 3 .....	Registered	16
Jennings, J. R., Ladysmith .....	Grade	24
Jerdee, Ingle, Comstock .....	Grade	22
Jerome, Fred, Barron .....	Grade	24
Jodell, H. W., Knapp .....	Reg. & Gr.	27
Johnson, A. O., Angus .....	Grade	18
Johnson, Chloran, Yuba .....	Grade	14
Johnson, Elmer, Stoughton, R. 5 .....	Registered	30
Johnson Farm Co., Brandon .....	Reg. & Gr.	22
Johnson, Glen, Baraboo .....	Registered	9
Johnson, John E., Columbus, R. 1 .....	Reg. & Gr.	14
Johnson, Lawrence, Algoma .....	Reg. & Gr.	12
Johnson, L. G., Whitewater .....	Reg. & Gr.	15
Johnson, Ralph, Barron .....	Grade	15
Jones, C. B. & A. T. Johnson, Angus .....	Grade	14
Jones, S. B., Hillsdale, .....	Grade	7
Juers, Louis, Plymouth .....	Grade	12

**JUNEAU COUNTY GUERNSEY  
BREEDERS' ASSOCIATION****OFFICERS:**

President—Herman Gugdahl, New Lisbon

Vice President—Elmer Niles, Mauston

Sec.-Treas.—Mrs. M. L. Witz, New Lisbon

**Bang's Tested, Type and Production Herds**

Grand Champion Cow at the New York State Fair in 1936,  
was born and bred in Juneau County. We have more like  
Her.

Kappelman, Wm. C., Manitowoc, R. 6 .....	Grade	9
Kasuboski, Frank, Berlin, R. 2 .....	Grade	18
Keefe, John, Antioch, Illinois .....	Grade	17
Keisling, Ed., Jefferson .....	Reg. & Gr.	12
Kilgore, Vernon, Elmwood .....	Grade	10
Kingsbury, E. F., Turtle Lake, R. 1 .....	Grade	10
Kingsbury, E. W., Turtle Lake, R. 1 .....	Grade	11
Kingston, Delbert H., Mukwonago .....	Grade	10
Kirch, Frank, Elroy .....	Grade	16
Klapperich, Melvin, St. Cloud .....	Grade	18
Klefstad & Gould, Barron .....	Grade	12
Klitzke, Harry, Whitewater .....	Grade	17
Knapmiller, Henry, Birchwood .....	Reg. & Gr.	14
Knowlton, Harland, Barron .....	Grade	16
Knutson, Louis, Cumberland .....	Grade	9

Koening, Conrad, Barron	Reg. & Gr.	23
Kohl, John, Elmwood	Grade	19
Koping, H., Elmwood, R. 2	Grade	28
Krause & Tinkham, Ripon, R. 2	Registered	25
Kreutzberg, Henry, Hortonville, R. 1	Grade	24
Kringle, Noah, Barron	Grade	13
Krueger, H. E., Kaukauna	Grade	12
Kunz, Wm., Fort Atkinson	Grade	17
Laird, John L., Shiocton, R. 2	Grade	12
Lamberger, Joseph, Cato	Grade	16
Landall, John, Waupun	Grade	18
Laney, D. M., Dousman	Registered	20
Langenfeld, Paul W., New Holstein	Grade	38
Larsen, Clarence, Algoma, R. 2	Reg. & Gr.	10
Larson, Hans & Sons, Elk Mound	Grade	17
Lauerman, C. J., Marinette	Reg. & Gr.	10
Law & Onsrud, Stoughton, R. 5,	Grade	24
Lee, Andrew, Stoughton, R. 3	Grade	18
Leist, Mrs. Laura, Manitowoc, R. 6	Grade	14
Leisz, Edward M., Turtle Lake	Grade	22
Leonard, B. C., Brill	Grade	8
Leppa, Victor, Appleton, R. 1	Registered	20
Lerch, F. W., Boyceville	Grade	10
Leubke, Chas., Valders	Grade	14
Lewis & Baribeau, New Auburn	Grade	16
Lewis, B. J. & Son, Haugen	Grade	16
Lewis, Russel, Elmwood	Grade	14
Lichtenwaluer, Arthur, Hartford	Registered	9
Lien, Elmer, Barron	Grade	18
Loew, Austin, Rice Lake	Grade	34
Logerquist, A. M., Bailey's Harbor	Reg. & Gr.	11
Lokken, Julius, Rice Lake	Grade	9
Longmore, L. H., Elkhorn	Grade	25
Losic, John, Elroy	Grade	17
Lubeno, Henry, Trevor	Grade	36
Lueck, H. A., Almena	Grade	16
Lueder, Walter, Cederburg	Reg. & Gr.	18
Lurvey, H. & H., Dousman	Registered	45
Luxerin Farm, Fond du Lac	Reg. & Gr.	43
Lycan, L. J., De Pere, R. 3	Grade	20
Macak, Albert, Barron	Grade	18
Mackie, E. E. & Son, Picketts	Grade	18
Mac Manus, Web., Oregon	Grade	13
Mandt, L. O., Madison, R. 5	Grade	19
Marx, George, Picketts	Grade	11
Mathews, Melvin, Rice Lake	Grade	12
Matson, Martin, Chetek	Grade	9
Mattes, George, Kiel, R. 1	Grade	20
Matthys, Walter, Barron	Reg. & Gr.	23
Matznick, Wm. F., Chilton	Grade	15
Maule, K. D., Dousman	Reg. & Gr.	57
Maves, Paul C., Greenleaf, R. 1	Grade	14
McKee, Clyde, Hillsdale	Grade	15
McKerrow, Geo. & Sons Co., Pewaukee	Registered	60
Mechling, Chas., Barron	Grade	16
Meltz, Emory C., Appleton, R. 1	Registered	16
Merlet, D. D., Beloit, R. 2	Grade	21
Merriman, S. A., Ft. Atkinson	Registered	23
Meyer, Roman, New Holstein	Grade	13
Michaels, Harold, Elkhart Lake, R. 5	Grade	20
Michels, Henry, Fond du Lac, 173 E. 2nd	Grade	18
Miller, A. A., Spring Valley	Grade	10
Miller, A. D., Almena, R. 1	Grade	10
Miller, Jacob, Sturgeon Bay, R. 3	Grade	15
Miller, James, M. & King, Chetek	Reg. & Gr.	15
Miller, John T., Winneconne	Grade	17
Millerman, Harland, Barron	Grade	16
Mills, S. J., Kansasville	Grade	26
Miske, Rudy, Kewaskum, R. 3	Grade	14
Mitchel, William, Salem	Registered	21
Mitchell, C. J., Waukesha	Registered	24

Bang's Certificate

Federal Accredited

## TILLYBARDIN GUERNSEY FARM

Every cow in herd of 60 head in Advanced  
Registry or on Official Test.

Bulls for sale born after January 1, 1937 sired  
by Boulder Bridge Gladiator - 198841

**CHAS. J. MITCHELL & SON**  
Waukesha, Wisconsin

Mitchell, G. E., Hillsboro	Grade	18
Mitchell, Lyman, Hillsboro	Grade	17
Mitchell, Paul, Waukesha	Reg. & Gr.	14
Mode, Albert, Ft. Atkinson, R. 4	Reg. & Gr.	11
Moevicke, Milton, Iola	Grade	12
Monette Bros., Elmwood, R. 2	Grade	22
Moon, N. J., Oshkosh, R. 3	Reg. & Gr.	31
Moore, Wm. H., Sawyer, R. 1	Reg. & Gr.	18
Morse, Mace, Princeton	Grade	21
Mousel, Mike, Elmwood	Reg. & Gr.	19
Mueller, M. J., West Bend	Grade	13
Mueller, Valentine, Kiel, Box 3	Registered	15
Mullikin, Herman, Cumberland	Grade	9
Munn, Dr. W. A., Janesville	Reg. & Gr.	22
Mutz Bros., Trevor	Registered	26
Nelson, Arthur N., Cumberland	Grade	10
Nelson Bros., Cumberland	Reg. & Gr.	17
Nelson, Harold, Whitewater	Grade	20
Nelson, H. E., Boyceville	Grade	17
Nelson, N. E. & Son, Dousman	Reg. & Gr.	20
Nelson, Nels, Birchwood	Grade	14
Nelson, Will, Omro	Grade	23
Nett, Nick, New Holstein, R. 2	Grade	17
Nettleton, Egbert, Marinette	Grade	23
Neumann, Bert E., Rice Lake	Grade	11
Nichols, A. E., Canton	Grade	16
Nicholls, Morris, Stoughton	Registered	9
Nichols, William, Chetek	Reg. & Gr.	24
Ninmer, Henry, Kiel, R. 2	Grade	17
Nippersink Farm, Twin Lakes	Grade	32
Oftedahl, O. E. & Sons, Rice Lake	Grade	18
Olson, O. E. and Ray Olson, Rice Lake	Grade	20
Olson, Olive M., Iola	Grade	8
O'Meara, Barney, Elmwood	Reg. & Gr.	45
Onsrud, Ben, Stoughton, R. 3	Reg. & Gr.	16
Orn, C. J., Barron	Registered	18

## EAST LYNNE FARM

Herd Sire

Holliston's Laddie A.R.

Sons and Daughters of cows on

Triple Letter Herd Test

For Sale

**ELTON W. MORGAN**  
Cato, Wisconsin

# Splendid Young Guernsey Bulls

from high record dams. Sired by Foremost May Royal or Coronet Silver King. Send for list. Herd Accredited — negative. May Rose breeding.

## ALTA VISTA FARM

Lake Geneva, Wisconsin

Write Wm. N. Pelouze, 232 E. Ohio St.,  
Chicago, Ill.

Owen, Dave, Mukwonago, R. 1	Registered	30
Owens, DeWitt, Oconomowoc	Grade	27
Page, G. F., Berlin, R. 2	Grade	24
Pattee, J. R., Waupun	Registered	12
Patton, Robt., McAllister	Reg. & Gr.	13
Paul, M. J., Berlin	Grade	24
Pease, L. E., Waukesha	Grade	31
Peters, Jos., New Franken	Grade	22
Petersen, Walter, New Auburn	Grade	22
Peterson, Bernard, Almena	Grade	17
Peterson, John A., Turtle Lake, R. 1	Grade	17
Pflughoeft, Julius, Algoma	Registered	11
Phillips, Howard, Peshtigo	Grade	12
Pieper, John, Rice Lake	Grade	6
Plagge, August & Sons, Holcombe	Grade	21
Pomeroy, L. H., Amberg	Grade	8
Poulter, Alfred, Cumberland	Reg. & Gr.	14
Poulter, Clarence, Cumberland	Reg. & Gr.	9
Poulter, Mrs. C. W., Cumberland	Reg. & Gr.	12
Puls, Rinhart, Hortonville, R. 1	Grade	25
Purity Farms, Hartland	Registered	12
Quasius, Henry, Sheboygan	Grade	17
Rabe, Geo. & Son, Kiel, R. 1	Grade	20
Radle, Wm., Meridean, R. 1	Grade	6
Reinke, Jac., Elmwood	Grade	31
Reis, Frank, Greenville	Reg. & Gr.	15
Retzlaff, Otto C., Green Lake, R. 1	Grade	20
Reynold, Herman, Cumberland	Grade	12
Richards, George, Lodi	Grade	18
Ridge, H. & Sons, Whitewater	Reg. & Gr.	37
Riter, Jess, Platteville	Grade	16
Riverside Stock Farm, Poskin	Registered	30
Rockman, Martin, Barron	Reg. & Gr.	19
Roe, O. B., Whitewater	Grade	23
Roitt, J. M., Kiel, R. 2	Grade	13
Rosenbaum, Arthur, Fond du Lac, R. 3	Grade	29
Rosenthal, Otto, West Bend, R. 3	Grade	14
Ross & Shbourne, Rusk	Reg. & Gr.	24
Rossman, Joe, West Bend, R. 3	Grade	18
Johns, Roy, Rice Lake	Grade	6
Rummler, Henry, Watertown, R. 4	Reg. & Gr.	16
Rumph, Frank, Manitowoc, R. 6	Grade	17
Rusch, Walter, Fremont	Grade	16
Russell, Elvin, Apple River, Ill.	Grade	20
Rustman, J. H., Bassetts	Reg. & Gr.	52
Salen, Herman, Waukesha	Grade	60
Salverson, Ralph, Manitowoc, R. 5	Grade	9
Samz, Oscar, Two Rivers, R. 2	Grade	23
Sands, Roy, Elmwood, R. 2	Grade	16
Sauberlich, Geo., Appleton, R. 2	Reg. & Gr.	18
Schalow, G. E., Green Lake	Grade	15
Schilberg, Carl, Watertown, R. 3	Grade	20
Schlessner Bros., Johnson Creek	Reg. & Gr.	20
Schmidt, Elmer, Greenleaf, R. 1	Registered	22



# HEDGEVIEW FARM

## — GUERNSEYS —

Reg. Bulls from Dams up to 537 lbs. Butterfat

Sons of V. H. C. Sire

Federal Accredited — Bang's Free

### SCHLESNER BROS.

Johnson Creek, Wisconsin

Schmidt, Harold, Greenleaf, R. 1	-----	Registered	27
Schmit, Theo. A., Greenville	-----	Registered	18
Schoenborn, Benedict, New Holstein, R. 2	-----	Grade	15
Schoenborn, John A., New Holstein, R. 2	-----	Grade	18
Schramm, Wm., Mishicot, R. 1	-----	Grade	18
Schrauth, Alphonse, Campbellsport	-----	Grade	10
Schultz, Arthur, Manitowoc, R. 2	-----	Grade	25
Schultz, Edward, Kenosha	-----	Grade	13
Schultz, Gust, McAllister	-----	Grade	13
Schwab, Ed., Rice Lake	-----	Grade	23
Schwabe, Ernest, Elkhorn	-----	Grade	18
Schuette, G., Ableman	-----	Grade	11
Schumacher, A. C., Waukesha	-----	Grade	27
Schwalbe, Theodore, Chilton, R. 4	-----	Grade	11
Schwartz, L., Byron	-----	Grade	11
Schwemmer, George, Waukesha	-----	Grade	16
Scott, Mrs. Nellie, Argyle	-----	Reg. & Gr.	28
Scott, P. S. & Son, Menomonie, R. 1	-----	Reg. & Gr.	17
Segebrecht, Roy, Stoughton, R. 5	-----	Registered	14
Seymour, Earl, Peshtigo	-----	Grade	12
Seymour, S. D., West Allis, R. 4, Box 445	-----	Registered	20
Shaker, Ed., Meridean, R. 1	-----	Grade	11
Shearer, Morton P., Cumberland	-----	Reg. & Gr.	12
Sheridan's Farm, Phil Sheridan, Green Bay	-----	Grade	43
Shiffer, Orrie, Eau Claire	-----	Reg. & Gr.	15
Sinz, Clarence, Elmwood, R. 2	-----	Reg. & Gr.	20
Skinner, J. G., Rice Lake	-----	Grade	14
Smith, Louis, Hillsboro	-----	Grade	14
Smith & Miller, Cumberland	-----	Reg. & Gr.	24
Smith, Roy, Chetek	-----	Grade	11
Smithyman, R. P., Pewaukee	-----	Reg. & Gr.	23
Soquet Farm, E. J. Smith, Green Bay, R. 6	-----	Registered	20
Sorenson & Halverson, Stoughton, R. 2	-----	Grade	11
Sorenson Bros., Stoughton, R. 3	-----	Reg. & Gr.	13
Sorenson, Verner, Rockton	-----	Grade	16
Spears, John, Shiocton, R. 2	-----	Grade	13
Speith, Henry, Manitowoc, R. 2	-----	Grade	14
Steen & Benning, Oakfield	-----	Reg. & Gr.	20
Steiger, Carl E., Oshkosh, 108 Elmwood Ave.	-----	Registered	30
Steinberg, Len, Hortonville	-----	Grade	16
Stepniack, Walter, Porterfield	-----	Grade	21
Stevens, L. B., Oconomowoc	-----	Registered	40
Stien, Art, Newton	-----	Grade	16
Stitchman, Henry, New London, R. 2	-----	Grade	35
Stoeber, Ernest, Middleton	-----	Grade	23
Stout, Mrs. F. D., Angus	-----	Registered	13
Strahm, Fred, Ladysmith	-----	Registered	7
Suhr, Arthur, Cochrane	-----	Grade	22
Sunny Lea Dairy Farm, Oconomowoc	-----	Reg. & Gr.	27
Swanson, Elmer, Barron	-----	Registered	9
Swebach, Paul, Elmwood	-----	Grade	9
Taft, Lyle, Chetek	-----	Grade	15
Taft, William & Son, Chetek	-----	Grade	15
Tamarack Farm No. 1, Dousman	-----	Grade	40

Tatro, Mrs. & Son, Bruce .....	Grade	20
Tiedt, Wm., Appleton, R. 1 .....		20
Teidt, Wm. C. Jr., Black Creek .....	Grade	17
Tennie, Oscar, Greenville .....	Grade	18
Thatcher, C. B., Clear Lake .....	Registered	27
Thomas & Roe, Whitewater, R. 3 .....	Reg. & Gr.	20
Tieman & Creasy, South Wayne .....	Grade	30

E. B. Krause

C. H. Tinkham

## OAKWOLD FARM GUERNSEYS

While in Oshkosh—Visit Us

3 Miles West of Ripon

5 Miles East of Green Lake

Todd, George, Belmont .....	Grade	23
Topper, Ernest, Colfax .....	Grade	10
Torgerson, J. G., Meridean, R. 1 .....	Grade	9
Torrey, James P. & Son, Bristol .....	Reg. & Gr.	30
Turner, Merton, Downsville .....	Reg. & Gr.	11
Vallesky, G. W., Collins, Box 92 .....	Grade	17
Vernon & Tyrell, Barron .....	Grade	11
Vohs, A. H., Campbellsport .....	Grade	18
Walden Farm, Oshkosh, R. 4 .....	Registered	46
Wall, Elmer, Cameron .....	Grade	14
Warren, James P., Burlington, R. 4 .....	Grade	27
Webb, Anton, Spring Valley .....	Grade	20
Weber, Joseph P., Sturtevant, R. 1 .....	Reg. & Gr.	25
Webster, C. A., Wausaukee .....	Grade	13
Wegner, Walter, Elkhart Lake, R. 1 .....	Reg. & Gr.	15
Weirich, Martin, Baraboo .....	Reg. & Gr.	12
Weis, Mike J. & Son, Campbellsport .....	Grade	12
Welch, Ed., Elmwood .....	Grade	13
Wepking, Fred, Richland Center .....	Grade	10
Whitby, Edwin P., Malone .....	Grade	11
Wichern, L. M., Baraboo .....	Registered	16
Wieneke, Albert, Mt. Horeb .....	Reg. & Gr.	21
Wiesenthal, Robert, Burlington, R. 2 .....	Grade	19
Wild Bros., Elmwood .....	Reg. & Gr.	40
Wilde, Rudolph, Thiensville .....	Reg. & Gr.	12
Williams, J. H., Waukesha, R 1 .....	Registered	40
Williams, Roger, Picketts .....	Grade	27
Wilson, H. J., Rusk Lake .....	Registered	32
Winkler Bros., Burlington, R. 4 .....	Grade	32
Wipperman, E. A., Sheboygan .....	Reg. & Gr.	11
Wolf, Wm., Elmwood, R. 2 .....	Grade	25
Wolter, Fred, Sawyer .....	Grade	19
Woodcock, E. R., Chilton, R. 4 .....	Grade	14
Woolley, Ed., Canton .....	Registered	6
Wright, Oliver, Iola .....	Grade	11
Wunsch, Hugo E., Sheboygan .....	Grade	21
Wurtz, Wm., Elmwood .....	Grade	10
Yetter, Wm., Coleman .....	Grade	16
Zahorik, Joseph, Cato .....	Registered	14
Zillisch, G. F., Johnson Creek .....	Reg. & Gr.	22

## URBANDALE GUERNSEYS

May Rose — Sequel Breeding

Young Stock for Sale

Priced Reasonable

**FRANK URBANZ**

Willard, Wisconsin

# The MAN for the JOB

Suppose that in 1926 you were given the job of directing every purebred Guernsey herd in America.

These facts were given you,—20,896 records had been completed on purebred Guernsey cows of all ages averaging 9675.3 pounds of milk and 483.2 pounds of butterfat. Your job was to maintain or increase that level of production and to test an even larger number of cows than had been tested in the previous 25 years.

You went quietly to work and during the next ten years 25,291 records were completed which averaged 10,423.6 pounds of milk and 517.0 pounds of butterfat, a net gain of 748.3 pounds of milk and 33.8 pounds of butterfat per record.

Had you been responsible, certainly then you would be entitled to praise and recognition for a gigantic job well done. But no one man did this job of battling against nature's laws of reversion to say nothing of drouth and depression.

“THE MAN FOR THE JOB’ to whom the credit of this great accomplishment in livestock history is due, are the GUERNSEY BREEDERS OF AMERICA.

**THE AMERICAN GUERNSEY  
— CATTLE CLUB —**

1020 Grove St., Peterborough, N. H.

## Making Guernsey History

JUNE



*Noranda's Milkmaid 266975 completes a New World Record of 19,654.6 lbs. milk and 1,155.8 lbs. B. F. Class A.*

OCTOBER



*Green Meadow Melba 384421 completes a New World Record. In her first lactation she produced 15,342.9 lbs. milk and 963.9 lbs. B. F. Class.*

JANUARY



*Cathedral Rosalie 334299 completes a New World Record of 23,714.5 lbs. milk and 1,213.1 lbs. B. F. Class A.*

# Wisconsin Dairymen

The Holstein Breeders of Winnebago County Welcome you to Oshkosh, the "Heart of Winnebagoland" and to Winnebago County which is the home of 14 of the 400 pound Holstein herds of the State of Wisconsin in 1935. The home of two of the states three highest record proven bulls, the home of 200—400 pound cows, the home of the only Holstein Herd Improvement Association of pure bred herds and the home of 70,000 contented and happy people.

Our annual spring sale of pure bred Holstein cattle—Cows with yearly Herd Improvement and Testing Association records, and bulls from high type, yearly record dams—75 head in all will be held at the Fair Grounds at Oshkosh, April 3rd, 1937. Come to Winnebago County for your herd sire and your foundation cows.

Write for catalog—

**O. P. CUFF, Oshkosh Manager**  
**Oshkosh, Wisconsin**

# ... HOLSTEINS ...



Acker, Carl, Barron .....	Grade	8
Addichs, Wm. & Sons, Platteville .....	Grade	12
Ahlers, Walter, Grafton .....	Registered	20
Alberg, Arnold, Cumberland .....		10
Alexander, Phil, Hillsdale .....	Grade	17
Alexander, Robert, Rice Lake .....	Reg. & Gr.	12
Allen, Alvin and Geo., Oshkosh, R. 3 .....	Registered	11
Allen, D. K., Oshkosh .....	Registered	25
Allen, Frank, Omro .....	Grade	14
Amidon, Gilbert & Son, Brooklyn .....	Grade	20
Anderson, Dave, Cumberland .....		8
Anderson, Joe, Winneconne .....	Grade	17
Anderson, John, Spring Green .....	Grade	13
Appenfeldt, Arnold, Juneau, R. ....	Registered	18
Armitage, Harry, Dale, R. 1 .....	Reg. & Gr.	9
Armstrong, H. J., Marinette .....	Grade	14
Arntson, Geo., Menomonie .....	Grade	10
Attridge, Frank, Baraboo .....	Grade	7
Atwood & DeBoer, Waupun .....	Registered	21
Averbeck, Arthur, Van Dyne .....	Grade	15
Augustine, Phil, Pound .....	Registered	14
Backhaus, Otto C., Campbellsport .....	Grade	20
Baensch, Emil, East Wis. Trust Co., Manitowoc ..	Grade	12
Bagley, Ralph H., Lake Beulah .....	Grade	12
Baird Bros., Waukesha .....	Reg. & Gr.	43
Baker & Onsrud, Stoughton, R. 1 .....	Reg. & Gr.	19
Baker, T. W., Waunakee .....	Registered	48
Baker, Wm., Honey Creek .....	Registered	15
Ballbach, John, Milwaukee, Sta. D, R. 3 .....	Grade	21
Balis, Ernest & Sons, Footville .....	Registered	20
Barber, Lee, Cameron .....	Grade	12
Barfkecht, Paul E., Barron .....	Registered	6
Barnhart, H. L., Menomonie .....	Reg. & Gr.	26
Barritt, W. H., Barron .....	Registered	19
Barron County Farm, Barron .....	Reg. & Gr.	18
Barstad, Carl, Barron .....	Grade	30
Bartelt, Herman, West Bend, R. 3 .....	Grade	11
Barthel, Jos., Thiensville .....	Reg. & Gr.	14
Barthels, George, Two Rivers, R. 3 .....	Grade	23
Bartholomew, M. C., Lodi .....	Grade	38
Basler, Mrs. Lillian, Oshkosh .....	Grade	16
Basset, F. E., Omro, R. 1 .....	Registered	11
Bast, Jacob B., Richfield .....	Registered	16
Bast, Paul J., Richfield .....	Registered	21
Bauch, Fred, Poskin .....	Grade	11
Bauer, Victor, West Bend, R. 3 .....	Grade	21
Baum, Otto C., Adell .....	Reg. & Gr.	15
Baumberger, W. L., Rice Lake .....	Reg. & Gr.	15
Beaver Bay Stock Farm, Beaver Dam, R. 3 ..		
Berger Sanstrom, Mgr. ....	Registered	27
Bechwith, Wm., Barron .....	Grade	18
Beck, Louis, Oshkosh .....	Registered	17
Becker, Chas. & Sons, Ft. Atkinson .....	Registered	20
Becker, Edwin C., Ft. Atkinson .....	Registered	10
Becker, H. A. Est., Juneau, R. 1 .....	Registered	24

# ALWAYS— PROVING OUR BREEDING STOCK

900 Registered Holstein  
Cows On Herd Test

## OUR IDEAL IN BREEDING—

A cow of acceptable dairy type that is a regular breeder and continues to produce profitably at the pail through a long useful life.

## OUR IDEAL IN BUILDING—

A profitable dairy farm business in Wisconsin. We want to lend our experience, help, and encouragement to the dairy farm family in that endeavor.

WRITE YOUR NEEDS

VISIT OUR HERDS

**The**  
**Wisconsin Board of Control**

G. M. HOUSEHOLDER, Farm Advisor

Madison

—:—

Wisconsin

Becker, Harold, Rice Lake	Grade	22
Becker, J. R., Cameron	Grade	20
Becker, L. B., Barron	Grade	29
Becker, N. P., Alma, R. 1	Reg. & Gr.	11
Bee, Tom, Richland Center	Grade	28
Behnke, Edwin, Quarry	Grade	10
Beilke, Walter, Fairwater	Registered	27
Bell, Frank, Columbus	Registered	20
Bemis, C. F., Plymouth	Reg. & Gr.	18
Bender, Blake, Viola	Registered	12
Bender, Fred, Cleveland, R. 1	Grade	26
Bennett, Harold, Oakfield	Registered	20
Bergel, Frank, Two Rivers, R. 3	Grade	23
Berger, Otis, Hillsdale	Grade	17
Betry, H. W., & Son, Berlin	Registered	13
Beuchel, Edwin, Sheboygan	Reg. & Gr.	23
Beurgi, August, Rice Lake	Grade	18
Beyer, Carl, Appleton, R. 2	Grade	12
Bie, George H., & Sons, Racine	Registered	13
Biederman, Art, Columbus, R. 6	Reg. & Gr.	24
Biehn Bros., Union Grove	Registered	15
Biere, R. B., Sturgeon Bay, R. 3	Reg. & Gr.	12
Blodeau, Mrs. A., Rice Lake	Grade	7
Bingham, Merrill, Milton	Registered	10
Bird, Bennet S., Oakfield, R. 3	Registered	15
Bird, Robert, Oakfield, R. 3	Reg. & Gr.	27
Bird, Sidney Jr., Oakfield, R. 3	Reg. & Gr.	16
Bird, S. H. & Son, S. Byron	Registered	21
Blackmore Bros., Campbellsport	Registered	30
Blade, Wm., Benton	Grade	17
Blaka, Victor, Two Rivers, R. 1	Grade	22
Blake, Mrs. Ida & Son, Menomonie	Grade	18
Blanck, Ben F., New Holstein, R. 2	Grade	22
Blank, Franklin, West Bend, R. 3	Reg. & Gr.	10
Blank, Ray, Grafton	Registered	17
Blindauer, Edwin, Sheboygan	Mixed	13
Block, L. A., Cameron	Grade	18
Boche, Walter, Oshkosh	Grade	20
Bodden, Hubert, Theresa	Grade	14
Bodden, Joe, Campbellsport, R. 3	Grade	9
Boeck & Heindel, South Wayne	Grade	20
Boehnlein, Gregor, New Holstein, R. 2	Grade	21
Bohl, Victor, Appleton, R. 2	Grade	20
Bolander, W. A., Dunbar	Reg. & Gr.	14
Bonlender, Raymond, Campbellsport, R. 3	Grade	19
Borchardt, Aug., & Son, Brandon	Grade	23
Borchardt, Herman, Brandon	Grade	14
Borgen, Martin I., Dallas	Registered	22
Borgwardt, Christ, Valders	Registered	21
Boss, John, Oshkosh	Grade	29
Bottrell, Milfred, Dale, R. 1	Reg. & Gr.	9
Bowers, Asa, Chetek	Grade	21
Bowers, David, Chetek	Grade	17
Boyle, F. H., Peebles	Registered	52

Accredited Bang's and T.B.

15 years C.T.A.

## BOYLE'S HOLSTEINS

F. H. Boyle, Owner

L. F. Murphy, Mgr.

Peebles, Wis.

Bracken & Cox, Juneau, R. 1	Reg. & Gr.	25
Bradseth, Norman, Rice Lake	Grade	28
Braeur, Frank, Sawyer	Grade	14
Branders, Walter, Burlington, R. 4	Grade	16
Brandt, Harold, Sheboygan Falls, R. 1	Registered	9
Braun, Henry, Eden	Registered	16
Braun, Walter, Kewaskum, R. 3	Grade	15
Brennan Farm, Elkhorn	Registered	15



# Holsteins

---

## Our Program—

Test all the cows in the herd.

Test continuously year after year.

Make use of the figures the tester gives us.

## Our Herd Sires—

### King Bessie Duke

1243 lbs. Son of King Bessie

### Admiral Beechwood Ormsby 4th

100 lbs. Fat, double grandson of  
Admiral Ormsby Fobes

Come to Sheboygan County  
for Good Holsteins

---

# Pinehurst

# - FARM -

SHEBOYGAN FALLS, WISCONSIN

Brewer, B. F., Berlin, R.	Registered	25
Brickbauer, Carl, Elkhart Lake	Registered	20
Bricton Anfin, Deerfield	Reg. & Gr.	40
Brill, Norbert B., Elkhart Lake, R. 2	Grade	21
Brill, Walter C., Oostburg	Registered	7
Brooks, Joe & Sons, Pound	Grade	17
Brosig, Frank, Green Bay, R. 3	Grade	18
Brown County Asylum, Green Bay, R. 1	Registered	50
Brown, Ed., Cumberland		11
Brown, Mrs. Emma, Brooklyn, R. 3	Grade	7
Brumm Bros., Verona, R. 1	Grade	31
Brumm, C. and E., Verona, R. 1	Grade	24
Buehring, Herman, Oshkosh	Grade	18
Bungert, Alfred, Hortonville, R. 1		20
Burdick, F. H., Hillsdale	Grade	10
Burdick, Harold, Hillsdale	Registered	20
Burow, Al, Barron	Grade	10
Buss, W. G., Belmont	Registered	21
Bussewitz, Wm. E., Juneau, R. 3	Registered	18
Cain, J. B., Glenbeulah	Registered	11
Cain, P. H., Elkhart Lake, R. 2	Reg. & Gr.	23
Caldwell, F. M., Waupun	Grade	27
Calhoun, Andrew, Stoughton, R. 3	Reg. & Gr.	12
Canniff, Hazen T., Juneau, R. 3	Registered	16
Carlson Bros., Boyceville	Reg. & Gr.	15
Carlson, Carl A., Boyceville	Reg. & Gr.	10
Carman, C. J., Plymouth	Reg. & Gr.	12
Carnes, Fay, Ft. Atkinson, R. 2	Registered	20
Carpenter, Charles, Hortonville, R. 1	Registered	12
Carpenter, Lester, Barron	Reg. & Gr.	12
Carvious, Howard, Marinette	Grade	17
Chandler & Witte Bros., Cottage Grove	Reg. & Gr.	25
Chilson & Froeming, Harvard, Ill., R. 3	Grade	26
Christensen, Carl, Peshtigo	Grade	15
Christensen, Harry, Larson	Grade	15
Christianson, Peter, Sheldon	Grade	34
Christofer, Mrs. M. J., Rio	Grade	20
Cisar, Ed., Oconto	Registered	16
Citizens State Bank & Chas. Pitt, Whitewater	Grade	30
Clark, Ben, Mukwonago	Reg. & Gr.	24
Clark, Leon, Mayville	Registered	20
Classen, H. C., Winneconne	Reg. & Gr.	22
Clausen Bros., Kenosha	Registered	23
Cockeram, Willis, Menomonie	Reg. & Gr.	10
Columbia Co. Asylum, Wyocena	Registered	28
Columbus Food Corp., Columbus	Grade	20
Columbus Foods Corp., Bert Brewer, Mgr., Columbus, R. 3	Grade	18
Conrad, Edgar, Elkhart Lake, R. 2	Grade	15
Conrad, John, West Allis, R. 4	Reg. & Gr.	20
Conway Farm's, Inc., Janesville, R. 3	Registered	65
Elam Coon & Clark Todd & Son Milton Jct.	Registered	30
Cornelius, C. A., Barron, Wis.	Registered	14
Cox, John, Omro, Wis.	Grade	12
Cuff, O. P., Hortonville, Wis., R. 2	Reg. & Gr.	25
Curtiss, H. W., Rio,	Registered	8
Cuthbert & Brown, Barron, Wis.,	Registered	12
Dahnert, E. A., Juneau	Reg. & Gr.	30
Dalhoe, Bert M., Chetek,	Grade	11
Daniels, Emil, Kansasville	Grade	20
Dearhammer, Harvey, Beloit, R. 4	Grade	30
De Lange, Ed., Elkhorn	Registered	20
Dernovsek, Lucas, Sheldon	Grade	18
Dettwiler, Arnold, Verona	Grade	30
Dibble, Ben, Pewaukee	Reg. & Gr.	30
Dickrell, Jacob, Elkhart Lake, R. 2	Grade	18
Diny, Frank, Greenleaf	Grade	28
Dittmar, Roland, So. Milwaukee, R.F.D.	Registered	12
Dix, Harry Menomonie	Registered	24
Dobberstein, John, Hortonville, R. 2	Grade	18
Dodge, Roy, Chetek	Grade	18
Doering, Gust, Fairwater, R. 1	Grade	21

## CRESCENT BEAUTY STOCK FARM

### Home of the Crescent Beautys

Entire herd built around the proved Crescent Beauty Family with splendid type, high test, and uniformly high production.

#### Herd Average past 4 years

1933	3.54%	338	lbs.	fat
1934	3.63%	358	lbs.	fat
1935	3.75%	358	lbs.	fat
1936	3.19%	413	lbs.	fat

Four cows rated "Excellent" at the Jefferson Co. Production Show. Two rated "Excellent," and two "Good Plus" at the All State Production Show.

#### THE HERD OF PROVED TYPE AND PRODUCTION

Roy L. Hetts & Son —:— Ft. Atkinson, Wis., R. 1

We have a very fine selection of young bulls of **King Bessie Ruby**. This bull is the son of **King Bessie Ormsby Pietertje**, who is an All American and has 30 tested daughters.

King Bessie Ruby's dam "**Gold Medal**" records in 365 days, 1,176.25 lbs. of butter and 28,422 lbs. of milk. She is a maternal sister to the well-known All-American winner, **Strathmore Ruby Matchless**.

These young bulls are priced from \$100 and up.

**MR. D. M. KORF**

Phone 3041

5618 6th Avenue —:— Kenosha, Wis.

Holsteins

Bangs Free

3 yr. av. 423 lbs. B.F.

## A HERD BUILT FROM ONE COW

Harold W. Draeger

—:—

Ft. Atkinson, Wis.

Donovan, Leo, Van Dyne	Grade	31
Dornbrook, A. H., Brandon	Registered	19
Dorchner, Otto, Hortonville, R. 2	Grade	23
Dorn, Nick, New Holstein, R. 2	Grade	13
Doyle Bros., Rice Lake	Grade	32
Draeger, Emil, Ft. Atkinson, R. 4	Registered	16
Draeger, George, Ft. Atkinson, R. 4	Registered	14
Draeger, Harold, Ft. Atkinson,	Registered	20
Dreger, Emil, Madison, R. 6	Registered	25
Dreger, Frank, Iron Ridge, R. 1	Registered	18
Drews, Alvin A., Burnett, R. 1	Grade	29
Duncan, Claude A., Cumberland	Grade	13
Dunn Co. Asylum, Menomonie	Registered	56
Dymond, Wm., Palmyra	Grade	35
Eastwood, Ralph, Woodford	Reg. & Gr.	24
Ebersohl, Walter, Ft. Atkinson, R. 4	Grade	20
Eckardt, Edward, Mishicot, R. 1	Grade	22
Eckel, Henry M., Hales Corners	Reg. & Gr.	22
Eckstein, Coleman, Winneconne	Grade	22
Eckstein, Earl, Larsen	Grade	17
Edquist, Iver, Somers	Grade	18
Ehde, John, Coleman	Grade	24
Ehm, William, Appleton	Grade	10
Eide and Osgaren, Stoughton, R. 2	Grade	11
Ellickson, Elfred, Rio	Grade	10
Ellis, Harold, Omro	Grade	22
Elven & Robertson, Argyle	Grade	44
Emmertson, Emmel, Racine, R. 2	Reg. & Gr.	20
Ennis, Dr., Shullsburg	Grade	17
Erfenth, Herman, Verona	Grade	19
Ertte, John, Elmwood	Grade	9
Eschenbach, Wm., Merrimac,	Reg. & Gr.	7
Etta, Julius W., West Bend	Reg. & Gr.	14
Evenson, Chester, Rice Lake	Grade	12
Evenson, Hans, Menomonie	Grade	16
Evenson and Osgaren, Stoughton, R. 2	Grade	17
Ewald, Wm. Mayville	Grade	29
Falk, Jacob, Hales Corners	Grade	9
Falkenstein, Wally, Lodi	Grade	25
Falstad, Emil, Barron	Grade	13
Farmers and Merchants Bank, Jefferson	Registered	25
Fassbender, Elmer, Hortonville, R. 1		12
Feaster, Henry, Richland Center	Grade	21
Fedderly, Charles, Elmwood	Registered	15
Feider, G. J., Belgium	Registered	15

## GREAT HOME FARM

The combination of Admiral Ormsby Fobes and  
Sir Bess Ormsby Lass

Sires of highest percentage of 1000 lb. per daughters tested.

G. J. Feider, Owner

—:—

Belgium, Wis.

Fenerhammer, John, Campbellsport	Grade	14
Fenske, Henry, Menomonie	Grade	21
Fetterly, Frank, Oconto	Grade	24
Fick, Albert, Wonewoc	Grade	14
Field, Bert, Elroy	Grade	14
Field Bros., Mt. Horeb,	Grade	33

# The Ventnor Farm Herd

Gustave Pabst, Owner

Entirely consist of descendants of our former Herd Sire

## SIR BESS ORMSBY FOBES

One of the outstanding sons of 37th and Wisconsin Fobes. Recent sires used are Carnation Sensation and Crusader. Ventnor Sir Fobes Inka out of a 1240 pound daughter of Calamity Posch. King Bess Walker Fobes, a son of King Bessie Ormsby Pietertje and May Walker Fobes, 1023 pound junior three year old, a granddaughter of the former 1500 pound champion May Walker Ollie Homestead.

Have a few bull calves sired by King Bess Fobes of Ventnor of excellent conformation, breeding and records for sale.

ACCREDITED

Route 4, Oconomowoc, Wisconsin

VISITORS WELCOME

## "WINNEBAGO CHIEF OSHKOSH"

### A Splendid Bull Calf

From Our Registered Holstein Herd

will go to someone who attends

THE DAIRYMEN'S CONVENTION IN OSHKOSH

MARCH 23-24

Visit our herd during the Convention

212 registered Holsteins (107 in milking herd)

D.H.I.A. herd average 1936—11,135 lbs. milk; 387 lbs. fat, 3.5%. (81 head) (2 yrs. over 400 lbs. fat in D.H.I.A.)

Three Proved Sires in Service:—

Hollyhock Pietertje Ollie Ormsby (Index 444)

Sir Pietertje May

Marathon Bess Burke 15th

WINNEBAGO STATE HOSPITAL

Winnebago, Wisconsin

Carl Schmitt, Steward

Tom Webster, Herdsman

Finger, Laurence, Oconto .....	Registered	20
Fischer, Emil, Appleton, R. 2 .....		20
Fischer, Louis, and Son, Cleveland .....	Reg. & Gr.	29
Fischer, Leonard J., Brillion, R. 2 .....	Grade	2
Fiasch, Fred, Cumberland .....	Grade	10
Flood, Maurice, Campbellsport .....	Grade	16
Folsom, B. J., Markesan, R. 1 .....	Grade	27
Fond du Lac County Farm, Fond du Lac, Box 346		
	Registered	65
Fosmark, Severt, Morrisonville .....	Reg. & Gr.	40
Fossom, P. A. & Oliver Johnson, Chetek .....	Grade	6
Fountain, Chas., Elkhorn .....	Reg. & Gr.	30
Fowler, W. S. & Son, Bristol .....	Registered	16
Franz, Ewald, Elkhart Lake, R. 1 .....	Grade	14

Holsteins

2 Years Testing

## SCHWARTZWALD DAIRY FARM

Using high record bulls

Ewald Franz

—:—

Elkhart Lake, Wis., R. 1

Freeman, Ludeman, Ft. Atkinson .....	Reg. & Gr.	21
Frey, Louis W., Hartford .....	Registered	15
Friday, John, Oregon .....	Registered	20
Fromm, Paul, West Bend, R. 3 .....	Grade	10
Fuhrmann, Mrs. Katherine, St. Cloud .....	Grade	19
Fuller, Thos. G., Eden .....	Grade	18
Gallman, Jake, Ft. Atkinson, R. 4 .....	Reg. & Gr.	20
Garbisch, Ray, Random Lake .....	Reg. & Gr.	10
Garner, Frank, Chetek .....	Reg. & Gr.	21
Gasteyer, Bros., Elmwood, R. 2 .....	Grade	18
Geissler, George, Johnson Creek .....	Grade	13
Geissler, Harry, Watertown .....	Grade	14
Gengler, E. J., Milwaukee, Sta. F., R. 10 .....	Reg. & Gr.	16
Gensmann, E. B., Slinger .....	Grade	17
George Bros. & Ryner, Janesville, R. 5 .....	Grade	31
Gepke, R. A. and Sons, Oregon, R. 2 .....	Registered	16
Getchman, Schuyler, Baraboo .....	Reg. & Gr.	15
Gibson, Irvin, Eau Claire .....	Reg & Gr.	20
Giese, Harold, Prairie du Sac .....	Grade	14
Gillette Farm, Eau Claire .....	Registered	26
Gillmore, B. J., Bristol .....	Registered	30
Gillmore, Leo, Kenosha .....	Reg. & Gr.	15
Glover, A. J., Ft Atkinson .....	Reg. & Gr	45
Goff, W. H. & Son, Bruce .....	Registered	7
Gohr, Ernest, Rice Lake .....	Grade	14
Gomcinder, Joe, Sun Prairie .....	Grade	16
Goodman Bros., Wonewoc .....	Registered	20
Goodman Farm, Goodman .....	Registered	26
Gordon, James, Oconto .....	Grade	14
Grabill & Battaglia, Palmyra .....	Reg. & Gr.	30
Grimm, Adolph, Two Rivers, R. 1 .....	Grade	24
Griswold, R. R., Dale, R. 1 .....	Grade	13
Groehler, Herman, Turtle Lake, R. 1 .....	Reg. & Gr.	21
Groff, Joe & Sons, Salem .....	Reg. & Gr.	17
Gross, Frank, Hillsboro .....	Reg. & Gr.	12
Gross, Lloyd, Knapp .....	Reg. & Gr.	18
Gruber, Erwin, Manitowoc, R. 6 .....	Grade	15
Grundy, Aug., Oshkosh, R. 6 .....	Grade	37
Guardian Farm, Whitewater .....	Grade	30
Guenther, Allen, So. Milwaukee, R.F.D. .....	Reg. & Gr.	11
Guerts, A, Green Bay, R. 6 .....	Registered	18
Guetschow, Edward, Mishicot, R. 1 .....	Grade	12
Gustafson, David, Clinton .....	Grade	25
Guthrie, Sam & Son, Eau Claire .....	Grade	30
Hagen, Ted, Cumberland .....	Reg. & Gr.	11
Hahn, Wm. J., Est., Reedsburg .....	Registered	7
Hain, Lewis. Almena .....	Grade	10

Hake, Ira, Menomonie -----	Grade	11
Halverson, W. C., Deerfield -----	Reg. & Gr.	32
Halvorson, Geo., Menomonie -----	Reg. & Gr.	16
Hamann, Harvey, Sheboygan -----	Reg. & Gr.	24
Hameister, Henry, Elkhart Lake, R. 1 -----	Grade	13
Hamman, Alvin, Johnson Creek -----	Grade	20
Hammann, Geo., Barron -----	Grade	12
Hammen, Arnold C., Ripon, R. 1 -----	Registered	10
Hammen, Louis H., Ripon -----	Registered	10
Hanke, Chas., Fremont -----	Grade	18
Hansen, Christ, Rice Lake -----	Reg. & Gr.	14
Hansen, Harry, Woodworth -----	Registered	24
Hansen, Harry H., Denmark -----	Registered	25
Hansen, Jim, Rice Lake -----	Grade	20
Hansen, Orville, Hortonville, R. 2 -----	Grade	16
Hansen, Peter, Bristol -----	Reg. & Gr.	14
Hansman & Wilcox, Knapp -----	Registered	22
Hanson, Arthur, Dallas -----	Registered	12
Hanson, Charles, Cumberland -----	Grade	14
Hanson, Mrs. John and Son, Chetek -----	Reg. & Gr.	17
Hanson, Magnus, Rice Lake, -----	Reg. & Gr.	21
Hardie, Henry W., Pewaukee -----	Grade	29
Harmon, Tony, Arkansas -----	Grade	18
Harness, Everett, Neenah -----	Grade	25
Hart, Carl, Peshtigo -----	Grade	14
Hart, Ray, Neenah -----	Grade	18
Hartman, Leonard, Lodi -----	Grade	30
Hartman, Walter, Lodi -----	Grade	24
Harvdale Farm, Oconomowoc -----	Registered	14
Hathaway, Sam, Rice Lake, -----	Grade	20
Havilik, Harold, Wonewoc -----	Registered	19
Hayes, Herbert, Rice Lake -----	Grade	18
Hedlund, W. E. & M. R., Boyceville -----	Reg. & Gr.	14
Heffner, E. L., Barron -----	Grade	18
Hegy, George, Hartford -----	Registered	22
Hein, Herbert, Marshall -----	Grade	30
Heinrich, Walter, Hales Corners -----	Reg. & Gr.	12
Heinze, Henry F, Haugen -----	Grade	16
Heinzelman, M. H., Ripon -----	Registered	14
Held, Edwin J., Hartford -----	Reg. & Gr.	12
Held, John, Slinger -----	Grade	17
Held, Robert, Slinger -----	Reg. & Gr.	20
Helgeson, Art, Valders -----	Grade	14
Helgeson, Gordon, Valders -----	Grade	18
Helm, Herbert, Winneconne -----	Grade	23
Helmer, Wayland S., Campbellsport -----	Grade	6
Hembrook, Rollo, Chetek -----	Grade	20
Henkel, Hubert, Winneconne -----	Grade	14
Henning, C. F., Eldorado -----	Grade	23
Henquinet, Jule, Beaver -----	Grade	21
Henschel, Louis, Newton -----	Grade	18
Herwig, R. B., Morrisonville -----	Grade	24
Hetts, Roy, Ft. Atkinson, R. 1 -----	Registered	16
Hewitt, Lloyd, Chetek -----	Reg. & Gr.	18
Hildebrand, Lyall, Picketts -----	Grade	16
Hildebrandt Bros., Cameron -----	Grade	28
Hilgedorf, Emil, Juneau -----	Registered	18
Hill, Harry E., Sheboygan Falls -----	Registered	60
Hinckley, Howard, Campbellsport -----	Grade	6
Hinkins Farms, Belmont -----	Grade	19
Hoel Bros., Cornell -----	Grade	20
Hoewisch, Carl, Fremont -----	Grade	18
Hofberger, John, Fremont -----	Reg. & Gr.	19
Hofland, Edw., Menomonie -----	Registered	45
Hogan State Farm, Waunakee -----	Registered	26
Holcomb, Alvin, Elmwood -----	Grade	14
Holmstrom, John, Rice Lake -----	Grade	15
Holmstrom, Nels G., Rice Lake -----	Reg. & Gr.	15
Holte, Oscar, Stoughton, R. 1 -----	Reg. & Gr.	19
Holter, Charles, New Auburn -----	Registered	22
Hopkins, J. W., Morrisonville -----	Grade	24
Hornung, Waldo, Fond du Lac, R. 1 -----	Grade	13

Hougen, Christ, Reedsville -----	Grade	15
Hovey, Wm. P., Campbellsport -----	Grade	14
Howard, George and Sons, Dousman -----	Registered	22
Hubbard Bros., Rio -----	Grade	30
Hubbard, Grover, Rio -----	Grade	25
Huebbe, Edgar, Beloit, R. 6 -----	Registered	20
Huber, Geo. Jr., Poynette -----	Reg. & Gr.	20
Huebner Bros, Hortonville, R. 1 -----		21
Huebner, Harvey, Iola -----	Grade	14
Huenink, D. W., Cedar Grove -----	Registered	17
Hugnes Bros., Waukesha -----	Grade	28
Hughes, Chas & Son, Campbellsport -----	Grade	16
Hugnes, Earl, Neenah, R. 3 -----	Registered	19
Hughes, Wm. H., Janesville, R. 3 -----	Registered	18
Hugnes, Whilden, Janesville, R 7 -----	Reg. & Gr.	30
Huntington, Harold, Platteville -----	Grade	18
Huset, Harold, Chetek -----	Grade	12
Huset, Oscar, Chetek -----	Grade	12
Hutjens, Herman, De Pere, R. 2 -----	Registered	37
Ihlenfeldt, Edw., Greenleaf, R. 3 -----	Grade	21
Immel, Albert, Fond du Lac, R. 3 -----	Registered	24
Immel, Earl, Fond du Lac, R. 2 -----	Grade	25
Immerfall, H. R., Rice Lake -----	Grade	33
Isaacson, Rhinehart, Rice Lake -----	Grade	12
Iverson and Aberg, Stoughton, R. 1 -----	Registered	9
Jacisin, Anthony, Haugen -----	Grade	20
Jacobson, Anton & Son, Menomonie -----	Registered	20
Jacobson, Hans, Rice Lake -----	Reg. & Gr.	10
Jefferson County Asylum, Jefferson -----	Registered	60
Jensen Bros., Denmark -----	Registered	18
Jensen, Chris, Colfax -----	Registered	18
Jensen, J. P. & Son, Scandanavia -----	Grade	14
Jensen, Victor, Racine, R. 2 -----	Reg. & Gr.	16
Jerkish, Frank, Sheldon -----	Registered	12
Johnson, C. A., Boyceville -----	Grade	8
Johnson Dairy, Stoughton, R. 3 -----	Grade	29
Johnson, Ralph, Barron -----	Grade	15
Johnson, W. M. & Son, Rice Lake -----	Reg. & Gr.	12
Jones, Carey, Barron -----	Registered	10
Jones, John D. Jr., Racine -----	Grade	25
Juers, Louis, Plymouth -----	Grade	12
Justus, G. J., Holcombe -----	Registered	22
Kahler, Chas., Hillsboro -----	Grade	18
Kahler, Harley, Hillsboro -----	Registered	12
Kammerer, Martin, Elkhart Lake, R. 2 -----	Registered	18
Kaphingst, Fred, Appleton, R. 1 -----		20
Kappelman, Fred, Two Rivers, R. 2 -----	Grade	12
Kappelman, Wm. C., Manitowoc, R. 6 -----	Grade	9
Karlen & Barlow, Darlington -----	Grade	24
Karsted, Art, Newton -----	Grade	17
Kasierski, J. F., Princeton, R. 1 -----	Registered	24
Kaster, Walter, Green Bay, R. 6 -----	Grade	12
Kauffmann, A., Dale, R. 1 -----	Grade	32

## ELMWOOD STOCK FARM

### Holsteins

Breeding for type, test and production.

Records up to 623 lbs. fat on strictly twice a day milking (Class C). Tests average up on 4.3% for the year.

Herd Sire out of a show type daughter of "ADMIRAL ORMSBY FOBES" with over 1,100 lbs. butter (888 lbs. fat), testing 4%.

Over 100 head in herd. A good place to make your selection.

GEORGE M. KIEFFER

—:—

Auburndale, Wis.



Kauper, John, Hartford	Reg. & Gr.	11
Keitel, Edwin, Prairie du Sac	Registered	13
Keller, Lester, Richland Center	Grade	28
Kersten, Dr. N. M., DePere	Grade	56
Kessler, Harold, Burlington, R. 4	Reg. & Gr.	18
Keyes, Glenn, Richland Center	Registered	44
Kienbaum, George, Whitewater	Grade	13
Kindschi Bros., Prairie du Sac	Registered	12
King, Don, Eau Galle	Grade	18
King, Stephen, Eden	Grade	21
Kirk, Henry, Omro, R. 3	Reg. & Gr.	13
Kirk, W. R., Omro	Registered	15
Klapperich, Melvin, St. Cloud	Grade	18
Klefstad & Gould, Barron	Grade	12
Klein, Ewald, Dallas	Reg. & Gr.	17
Klein, Geo. J., Hillsdale	Grade	24
Klofander, Rueben, Racine, R. 1	Reg. & Gr.	17
Klossner, Arnold, Rice Lake	Grade	10
Klug, Adam, Turtle Lake, R. 1	Reg. & Gr.	24
Klumb, Herbert, West Bend, R. 3	Grade	11
Klumb, Emil, West Bend, R. 3	Grade	9
Knick, Gus, Hillsboro	Registered	19
Koening, Ralph, Rice Lake	Reg. & Gr.	10
Koepp, Wm. R. R., Barron	Reg. & Gr.	12
Kohlwey, Otto, Grafton	Registered	14
Komp, Herman, Hartford	Grade	16
Konop, M. V., Haugen	Grade	18
Koping, H., Elmwood, R. 2	Grade	28
Korb, Gottfried, St. Cloud, R. 2	Grade	24
Korb, Richard, St. Cloud	Grade	19
Korf, Dave, Bristol	Registered	24
Koupp, Jacob, New Holstein	Grade	22
Krauss, Joe, Bristol	Grade	25
Kreuger, Waldo, Sawyer, R. 1	Grade	15
Kreuscher, Roy J., Union Grove	Reg. & Gr.	22
Krift, Wm., Burlington	Grade	12
Krings, Paul, Winneconne	Grade	29
Kritch, Jake, Rice Lake	Grade	16
Krizensky, Charles, Rice Lake	Reg. & Gr.	13
Kroehler, John, Richfield	Registered	10
Krueger, Emil, Kaukauna	Reg. & Gr.	12
Krueger, Theo. & Sons, Elk Mound	Registered	10
Krumhus, E. W., Thiensville,	Reg. & Gr.	15
Krumpke, Elmer, So. Beloit, Ill.	Grade	18
Kuehl, Martin, Fremont	Grade	21
Kuehn, Edw., Princeton, R. 1	Reg. & Gr.	15
Kuhaupt Bros., Slinger	Grade	21
Kuhn, Carl, Rio	Grade	20
Kuhn, John, Elkhart Lake, R. 1	Grade	11
Kummrow, Ed., Oconomowoc	Grade	22
Kurtze, Lloyd, Hales Corners	Reg. & Gr.	16
Kussow, Willard, W. DePere, R. 2	Grade	20
Kutchin, V. S., Green Lake	Reg. & Gr.	15
Kutsho, Blase, Waldo	Reg. & Gr.	15
LaBlanc, Wm., Turtle Lake, R. 1	Grade	18
La Fayette Country Farm, Darlington	Grade	35
Laird, George, Black Creek	Grade	12
Lakeview Farm, Beaver Dam, R. 3,	Reg. & Gr.	18
Lamb, Frances, Oakfield	Registered	20
Lanpheer, Halbert, Glenbeulah	Reg. & Gr.	15
Larsen, George, Rice Lake	Grade	16
Larson, Arnold, Stoughton, Oak St.	Registered	15
Larson, Ed. R., Rice Lake	Grade	10
Laun, J. B., Kiel	Grade	23
Laux, Lanard, Adell	Reg. & Gr.	27
Law, George, Cumberland	Reg. & Gr.	14
Lawrence, Claude R., La Valle	Registered	10
Lawton, Ray, Viola	Registered	21
Layton, Howard, Waupaca	Registered	16
Lecheler, Antony, Elmwood	Grade	16
Lecheler, Nick, Elmwood	Grade	11

Lehman, Charles, Baronette	Grade	8
Leist, Mrs. Laura, Manitowoc, R. 6	Grade	14
Leisz, Edward M., Turtle Lake	Grade	22
LeJeune, Hubert, Rice Lake	Reg. & Gr.	10
Le Jeune, J. F., Cumberland	Reg. & Gr.	8
Le Jeune & Tappan, Cumberland	Registered	23
Lellock, Erwin, Appleton, R. 1	Grade	18
Lemberger, Harold, Cato	Grade	12
Lemke, Arnold, Appleton, R. 1		21
Lemke, Edwin, Appleton, R. 1		20
Lemke, Fred, Dallas	Grade	11
Lemmenes, Andrew, Waupun	Grade	16
Leondale, Raymond, Shullsburg	Grade	15
Lepien, Art, Hartford	Registered	14
Lepien, Herbert, Hartford	Registered	12
Lepien, Raymond, Hartford	Registered	16
Lerch, F. W., Boyceville	Grade	10
Lewis, Russel, Elmwood	Grade	14
Lichtenwalner, I. H., Barron	Registered	8
Lillie, O. R. Farm, Waukesha	Registered	25
Lind Bros., Cumberland	Reg. & Gr.	9
Lindeman, Elmer, Juneau, R. 3	Grade	21
Linstedt, F. W., Colgate	Grade	14
Lloyd, E. B. & Son, Cambria, R.	Grade	24
Lochn and Henning, Eldorado	Grade	26
Loew, Austin, Rice Lake	Grade	34
Lohuis, Wm., Oostburg	Registered	10
Lokken, Julius, Rice Lake	Grade	9
Loos, Mrs. George & Son, Hartford	Grade	18
Luebke, Mrs. Ella, Oshkosh	Grade	19
Luhn, August, Theresa	Grade	14
Lundeen, Ray & Aug. Reetz, Markesan, R. 2	Grade	18
Lunenschloss, F., Richland Center	Grade	27
Lundmark, Frank, Cumberland	Registered	10
Lutheran Home Farms, Stoughton, R. 1	Registered	18
Lutterman, Wm. H., Loganville	Registered	14
Macak, Albert, Barron	Grade	18
Majerus, Wm., Campbellsport	Grade	16
Makurat, Peter, Berlin, R.R.	Grade	25
Malone, John, West Allis, R. 4	Reg. & Gr.	9
Marinette Country Asylum, Peshtigo	Registered	45
Markham, L. A., Janesville	Reg. & Gr.	50
Marks, Joe & Frank, Markesan, R. 1	Registered	15
Marlborough, George, Cato	Grade	19
Marshall, J. J., Cazenovia	Registered	11
Martin, Everett & Son, Mukwonago	Registered	25
Martin, Carl, Fremont	Grade	19
Martin, Fred, Marshall	Grade	24
Martinson & Hogie, Stoughton, R. 4	Grade	14
Marx, Geo. F., Fisk	Grade	14
Mason, Earl, Waupun, R. 2	Grade	30
Massie, Ed., Chetek	Grade	32
Matsen, Peter, Chetek	Grade	12
Matson, Anton, Chetek	Grade	6
Matson, Nels, Chetek	Reg. & Gr.	12
Mauer, Henry, Richfield	Grade	12
Mayer, Christ, Richfield	Reg. & Gr.	15
Mayer, John C., West Bend, R. 3	Registered	6
Mayer, Victor, Mayville	Registered	14
Mayola, John, Barron	Grade	27
Maytag's Ceylon Court Farm, Lake Geneva	Registered	75
McClain, R. C., Oakfield, R. 3	Registered	16
McConnell, Clark, Ripon, R. 2	Reg. & Gr.	30
McKee Bros., Madison, R. 5	Grade	35
McKinney, E., Barron	Registered	15
McMamara, J. F., Campbellsport	Grade	16
McMamara, Steve J., Eden	Grade	20
McRoberts, W. F., Waupun	Registered	18
Meacher, Dr. B. O., Pardieville	Grade	23
Mechenick, Wm., Slinger,	Grade	16
Mechling, Chas., Barron	Grade	16
Meekma, George, Randolph R. 1	Reg. & Gr.	30

Meinhardt, Fred, West Bend, R. 3	Reg. & Gr.	9
Meiseigeier, Wm., Barron	Registered	18
Meiselwitz, Adolph, Elkhart Lake, R. 1	Reg. & Gr.	19
Melgard, Alfreda, Barron	Grade	27
Melius, Milton, West Bend, R. 3	Reg. & Gr.	12
Melvin, Homer C., Glenbeulah	Reg. & Gr.	27
Memler, John, Kenosha	Reg. & Gr.	15
Messmer, Herbert, Two Rivers, R. 1	Grade	23
Metzig, Erwin, Larsen	Grade	19
Metzig, Fred, Neenah	Grade	14
Meulemans, Matt, Kaukauna, R. 3	Registered	15
Meyer, Albert Jr., Hales Corners	Registered	11
Meyer, Alfred J., Hales Corners	Reg. & Gr.	17
Meyer, Alvin, Elk Mound	Grade	25
Meyer, Ed. & Sons, Elk Mound	Grade	14
Meyer, Herbert, Baraboo	Reg. & Gr.	10
Michaels Will & Son, Berlin, R. 2	Registered	12
Michelson, Bernie, Fall River, R. 1	Grade	11
Mielkee, Arthur, Arlington	Reg. & Gr.	25
Mildebrandt, August, Markesan, R. 3	Registered	20
Miller, Mrs. D. M., Menomonie, R. 5	Grade	13
Miller, Emil and Walter Fisk	Registered	19
Miller, James M., & King, Chetek	Reg. & Gr.	15
Miller, Wesley, Burlington, R. 4	Grade	12
Mills, S. J., Kansasville	Grade	26
Mil. Co. House of Correction, Milwaukee	Registered	40
Milwaukee Co. Institution, Milwaukee	Registered	110
Miracle, A. H., Winneconne	Grade	22
Miracle, Warren, Oshkosh, R.F.D.	Grade	15
Miske, Rudy, Kewaskum, R. 3	Grade	14
Moe, John, Chetek	Grade	19
Moeller, Adolph, Sturgeon Bay, R. 3	Grade	18
Monson & Jacobson Gratiot	Grade	18
Moore, Clarence M., Clayton	Grade	15
Moore, Perry B., Almena	Reg. & Gr.	12
Moore, S. T., Rice Lake	Registered	18
Moore, W. D., Barron, R. 1	Reg. & Gr.	32
Morgan, Dano & Faivre, Reedsburg	Registered	19
Morris, Mrs. O. G. & Sons, Oconomowoc	Grade	20
Moritz, Oscar C., West Bend, R. 3	Registered	12
Moser, Theo. F., Allenton	Reg. & Gr.	15
Moths, Hugo O., Random Lake	Reg. & Gr.	17
Mousel, Wm., Elmwood	Grade	14
Mueller, Hilmer, Seymour	Reg. & Gr.	28
Mueller, Wilbert, Mishicot, R. 1	Grade	25
Muhlenbeck, Clarence, Kenosha	Grade	16
Murphy, Wm. J., Campbellsport	Grade	15
Muschik, Math, Clayton, R. 2	Reg. & Gr.	13
Nace, F. A. Est., Iola	Registered	24
Nagel, Raymond, Elkhart Lake, R. 1	Reg. & Gr.	12
Nehbrass Bros., Richfield	Registered	22
Nelson, Gilbert, Chetek	Reg. & Gr.	20
Nelson, Harvey A., Union Grove, R. 2	Registered	28
Nelson & Johnson, Marinette	Reg. & Gr.	18
Ness, Einar, Cumberland	Reg. & Gr.	12
Ness, Mrs. Peter, Rice Lake	Grade	12
Nettleton, Egbert, Marinette	Grade	23
Neuman, Adolph, Fremont	Grade	26
Neuman, A., Readfield	Grade	25
Neumann, Otto C., Adell	Registered	19
Neumeyer, Ed., Quarry, Box 16	Grade	19
Neuschafer, Franklin, Fremont	Grade	23
Nielsen, G. M., Knapp	Reg. & Gr.	28
Nielson, Mrs. Sophie, Rice Lake	Grade	20
Nippersink Farm, Twin Lakes	Grade	32
Normandy State Farm, Madison, R. 6	Registered	28
Norris Farm, Mukwonago	Registered	20
Northern Hospital, Winnebago	Registered	103
Nuland, Bernard, Edgerton, R. 6	Grade	10
Nygaard, Jergen, Stoughton, R. 2	Grade	15
O'Brien, Ray, Rice Lake	Reg. & Gr.	14

O'Brien, Wm., Campbellsport	Grade	28
Ochs, Paul, Elkhart Lake, R. 1	Grade	21
Ochs, Walter, Cleveland	Reg. & Gr.	23
Oettmier, John, Jefferson, R. 2	Reg. & Gr.	18
O'Harrow, Chas., Fisk	Registered	11
Old Line Life Ins. & Geo. Mitchell, Whitewater	Grade	35
O'Leary, Wm., Honey Creek	Registered	35
Olson Bros., Cameron	Grade	18
O'Neil, D. H., Rosendale	Registered	13
Opperman, Fred, Tigerton	Grade	15
Oregon State Farm, Oregon	Registered	33
Orsund, Peter, Rice Lake	Grade	13
Osterkamp Bros., Almena	Registered	19
Oswald, Elmer, Cleveland, R. 1	Grade	18
Owen, Chas., Elk Mound	Registered	30
Outagamie Co. Asylum, Appleton, R. 1	Grade	56
Ouweneel, Chet, Ft. Atkinson, R. 1	Registered	20
Overby, Simon, Menomonie	Grade	9
Owens, DeWitt, Oconomowoc	Grade	27
Pabst, Gustave, Oconomowoc	Registered	16
Panten, Ben, Slinger	Reg. & Gr.	15
Palmbach, George, Appleton, R. 1	Reg. & Gr.	11
Pamperin, Edward, West Bend, R. 3	Grade	15
Pamperin, Fred, West Bend, R. 3	Registered	12
Pamperin, George, Allenton, R. 1	Reg. & Gr.	12
Pamperin, Wm. C., Allenton, R. 1	Registered	13
Paulson, Reuben, Riley	Reg. & Gr.	35
Pausic, Fred, Fisk	Registered	19
Pautz, Oscar, Horicon, R. 1	Reg. & Gr.	22
Payne, Floyd, Plymouth	Registered	16
Peck, Willis, Menomonie	Grade	36
Peebles Bros., Oconomowoc	Registered	28
Perry Bros., Ft. Atkinson, R. 2	Grade	25
Pester, Clarence J., Whitewater, R. 2	Registered	25
Pester, John, Whitewater, R. 2	Registered	25
Pester, W. J., Whitewater	Registered	15
Peter, George, Fremont	Grade	17
Peterson, Carl V., Cameron	Grade	12
Peterson Bros., Rice Lake	Grade	20
Peterson & Helickson, Stoughton, R. 2	Reg. & Gr.	10
Peterson, Lawrence, Ft. Atkinson, R. 4	Registered	20
Peterson, Oscar F., Scandanavia	Registered	13
Phelps, L. H., Whitewater	Grade	25
Phillips & Esplin, Cumberland	Grade	10
Phillips, Howard, Peshtigo	Grade	12
Pieper, H. F., Eden	Registered	18

Holsteins

Bangs Accredited

18 yrs. in Herd Test

## 25 REGISTERED COWS

Fred Pamperin

—:—

West Bend, Wis., R. 3

Pinehurst Farm, Sheboygan Falls,	Registered	44
Pipkorn, Gust, Cedarburg	Reg. & Gr.	18
Powell & Gillmore, Kenosha	Reg. & Gr.	23
Potvatz, Albert, Oshkosh	Registered	17
Price, Frances, Kenosha	Registered	16
Price, Mrs. Edith, Kenosha	Grade	17
Priepke, Ed., Eldorado	Grade	33
Prindle, Irvin, Campbellsport	Grade	14
Quegley, Leon, Winneconne	Grade	25
Raawe, Herman, Cameron	Grade	14
Rabehl, Albert, Rice Lake	Grade	16
Rabehl, Arthur C., Rice Lake	Grade	18
Racine County Asylum, Racine	Reg & Gr.	75
Radant, Harold, Oconomowoc	Gr. Mixed	15
Radinz Bros., Green Bay, R. 3	Registered	25

Rae, G. S. & Sons, Barron .....	Grade	21
Rake, Clem, Columbus, R. 5 .....	Grade	16
Raminger, Louis, Manitowoc, R. 6 .....	Grade	12
Raymaker, Martin, Green Bay, R. 2 .....	Grade	12
Reddilien, Horace, Oconomowoc .....	Registered	20
Reed, Roy E., Ripon .....	Registered	17
Reick, C. J., Elkhorn .....	Registered	10
Reneking, Alvin & Son, Plymouth, R. 3 .....	Reg. & Gr.	15
Rens, Matt, Brandon .....	Grade	38
Retzlaff, George, Appleton, R. 2 .....		20
Rex, Harvey, Iron Ridge, R. 1 .....	Reg. & Gr.	21
Rex, Emil, Iron Ridge, R. 1 .....	Reg. & Gr.	22
Richland County Asylum, Richland Center, Reg. & Gr.		34
Richter, Ben, Burlington .....	Grade	24
Richter, Elmer, Burlington .....	Grade	22
Richter, Frank, Burlington .....	Grade	19
Richter, Henry, Union Grove .....	Registered	15
Riewesthal, Alfred, Hales Corners .....	Reg. & Gr.	16
Rieder, Raymond, Malone .....	Grade	13
Robarge, Laurence, Rice Lake .....	Grade	12
Robbins, Kenneth, Richland Center .....	Grade	19
Ray, Robert, Eau Claire .....	Registered	15
Rock County Farm, Janesville .....	Registered	58
Rockwell & Katterhenry, Beloit, R. 3 .....	Reg. & Gr.	39
Roecker, Edward, West Bend, R. 3 .....	Reg. & Gr.	16
Roecker, Edwin C., West Bend, R. 3 .....	Grade	14
Roehl, Fred, Van Dyne .....	Reg. & Gr.	14
Roitt, J. M., Kiel, R. 2 .....	Grade	13
Rood, Meinick C., Woodford .....	Grade	33
Rood, Ole C., South Wayne .....	Grade	45
Root, Archie, Rice Lake .....	Grade	16
Rosenow, L. J., Waumandee .....	Registered	23
Rosenthal, C. F., West Bend, R. 5 .....	Reg. & Gr.	12
Rosenthal, Otto, West Bend, R. 3 .....	Grade	14
Rossmann, Joe, West Bend, R. 3 .....	Grade	18
Roswell, Raymond, Oconomowoc .....	Grade	33
Rudy, Fred, Kenosha .....	Grade	16
Rufener & Doerfert, Hartford .....	Registered	25
Rupnow, Frank, Juneau, R. 1 .....	Grade	16
Ruppert, Henry, Belleville .....	Grade	39
Rusch, Frank, West Benu, R. 3 .....	Grade	19
Russart, Frank, Sheboygan .....	Grade	23
Russell, Roland, Apple River, Ill. ....	Grade	20
Rustman, J. H., Bassetts .....	Reg. & Gr.	52
Ruud, Edw. & Son, Menomonie .....	Reg. & Gr.	20
St. Jos. Orphan Asylum, Green Bay, R. 6 ..	Registered	30
Sandve, Art., Cumberland .....	Grade	7
Sar Barth Farm, Hales Corners .....	Reg. & Gr.	21
Schaffer, Alfred, Clayton, R. 2 .....	Grade	11
Schaf, August, Hartford .....	Grade	18
Schleuness, Fred, Kiel, R. 1 .....	Grade	18
Schlim & Heindel, South Wayne .....	Grade	39
Schmidt, Arno P., Kenosha .....	Grade	41
Schmidt, A. Fred, Campbellsport .....	Grade	6
Schmidt, Emil, Allenton .....	Reg. & Gr.	16
Schmidt, Geo., Hillsdale .....	Reg. & Gr.	18
Schmitz, Frank, St. Cloud .....	Grade	17
Schmitz, Martin, Fond du Lac, R. 2 .....	Grade	22
Schmitz, Michel Jr., Chilton, R. 2 .....	Grade	25
Schneider, Bernard, Newton .....	Grade	15
Schneider, Henry, Newton .....	Grade	16
Schneider, John, Cleveland .....	Grade	16
Schneider, Jos., New Franken .....	Registered	15
Schnieder, Mrs. Mary, Appleton .....	Grade	19
Schoessow, Berhard, Thiensville .....	Reg. & Gr.	10
Schommer, Math, Campbellsport .....	Grade	18
Schott, Jake, Bruce .....	Grade	18
Scott, Mrs. Nellie, Argyle .....	Reg. & Gr.	28
Scovell, Harold, Butte Des Morts .....	Registered	18
Schueler & Amundsen, Cambridge, R. 3 ..	Registered	24
Schuh, Anton, Hortonville, R. 2 .....	Grade	25

Schuh, M. A., Hortonville, R. 2	Grade	17
Schultz, Arthur, Manitowoc, R. 2	Grade	25
Schultz, Charles, Union Grove	Registered	25
Schultz, Gust, McAllister	Grade	13
Schultz, Lloyd, Hortonville, R. 2	Grade	17
Schultz, O. T. & Son, Menomonie	Registered	17
Schultz, R. C., Black Creek	Grade	24
Schwab, Ed., Rice Lake	Grade	23
Schwartz Bros., Spring Green	Registered	23
Schumacker, Geo. & Son, Footville	Registered	20
Schuman, Chas. F., Whitewater	Grade	20
Schuricht, Louis, Elkhart Lake, R. 2	Grade	24
Schutts, Leonard, Boyceville	Grade	13
Scott, Kenneth, Cameron	Grade	10
Sedgewick, Halsey, Lime Ridge	Registered	13
Seefeldt, August, Theresa	Registered	20
Seefeldt, G. D. & Aug., Theresa	Registered	12
Seefeldt, Martin, Theresa	Reg. & Gr.	6
Seider, Arno, Adell	Reg. & Gr.	9
Seigenthaler & Barlow, Darlington	Grade	34
Seitz, Frank, Elmwood	Grade	15
Shaker, Ed., Meridean	Grade	11
Shayer & Brecklin, Woodford	Grade	39
Sheboygan Co. Asylum, Sheboygan	Registered	38
Sheldon, Howard, Rice Lake	Reg. & Gr.	10
Sheppert, Art, Jefferson, R. 2	Grade	12
Siebecker, L. R., Baraboo	Registered	13
Simmons, S. A. & Son, Viola	Reg. & Gr.	18
Simons, S. B., Whitewater	Reg. & Gr.	22
Sixel, Henry S., Cleveland, R. 1	Grade	25
Smith Bros., La Valle	Reg. & Gr.	21
Smith, Earl F., Reedburg	Registered	10
Smith, Rufus, Mukwonago	Registered	24
Smith, Thomas D., Boyceville	Reg. & Gr.	17
Smithback, Ed., Ft. Atkinson	Grade	20
Sneen, Louie, Menomonie	Reg. & Gr.	9
Society of Divine Savior, St. Nazianz	Reg. & Gr.	60
Solberg, Oscar, Elk Mound	Reg. & Gr.	5
Solum, Edward, Chetek	Grade	22
Sommans, Leo, Campbellsport	Grade	16
Sorenson, Louis, Larson	Registered	9
Sosinske & Miller, Waupaca	Registered	18
Southcott, Roy & H. E. Dickinson, Oconomowoc	Registered	19
Spencer, Wm., Manitowoc, R. 6	Grade	15
Spring Brook Farm, Burnett, R. 1	Registered	31
Stack, George, Eden	Grade	20
Stahl, John, Chilton, R. 4	Reg. & Gr.	17
Stair, Henry, Barron	Grade	15
State Hospital, Mendota	Registered	26
Stauffacher, Mrs. Jno., Darlington	Reg. & Gr.	66
State Colony Farm No. 1, Waunakee	Registered	59
Steckling, Henry, Fremont	Grade	16
Steen & Benning, Oakfield	Reg. & Gr.	20
Steger, Rand E., Cedarburg	Grade	26
Stephan, Mrs. Anna, Richfield	Grade	17
Stevens, Chas. D., Jefferson, R. 2	Grade	10
Streuli, Herbert, Union Grove	Reg. & Gr.	13
Strey, Charles, Hortonville, R. 1	Grade	19
Strickert, Henry, Sawyer, R. 1	Grade	22
Strupp, Isidore, West Bend	Grade	10
Strusinski, William, Fremont	Reg. & Gr.	19
Stuesser, Chris, Richfield	Grade	15
Stuesser, Eugene, Richfield	Registered	17
Sunny Lea Dairy Farm, Oconomowoc	Reg. & Gr.	27
Sunrise Stock Farm, Columbus, R. 3	Grade	24
Swebach, Paul, Elmwood	Grade	9
Sweitzer, John, Hales Corners	Reg. & Gr.	10
Sykes, L. C., Cameron	Registered	12
Tamarack Farm No. 1, Dousman	Grade	40
Tamarack Farm No. 3, Dousman	Reg. & Gr.	19
Tamarack Farm No. 4, Dousman	Grade	21

Tamarack Farm No. 5, Dousman	Grade	17
Tamarack Farm No. 6, Dousman	Grade	15
Tamarack Farm No. 7, Dousman	Grade	26
Taylor, Frank, Janesville	Grade	20
Templeton & Brown, Oregon, R. 2	Grade	12
Tesch, Chas. & Son, Hartford	Grade	12
Tessne, Melvin, Whitewater	Reg. & Gr.	14
Thoma, Ernest, Sugar Bush	Grade	35
Thompson, Oscar, Reedsville	Grade	14
Thompson, Reuel, Valders	Grade	10
Thompson, Wm., Almena	Grade	19
Thorne, Ed., Barron	Grade	15
Thorson, O. M., Scandanavia	Grade	11
Tieman & Creasy, South Wayne	Grade	30
Timm, Louis, Appleton, R. 2		18
Torgerson, Edw., Menomonie	Reg. & Gr.	12
Torgerson, J. G., Meridean, R. 1	Grade	9
Torgerson, O. Theo, Meridean, R. 1	Reg. & Gr.	11
Tracy, Duane, Hillsboro	Reg. & Gr.	20
Trapp, Lewis, Columbus	Grade	14
Travnich, Joe, Hillsboro	Registered	15
Treptow, Walter, Fond du Lac, R. 1	Grade	18
Trieckel, M. R., Campbellsport	Grade	21
Turner, Earl, Viola	Grade	20
Tvedt, C. O., Barron	Registered	22
Ubbelohde, Frank, Plymouth	Reg. & Gr.	20
Uhlenbrauck, Emil, Freedom	Registered	15
Unser, C. F., Arkansas, R. 1	Grade	18
Uren, Frank, Stockton, Illinois	Reg. & Gr.	29
Vanalstine, E. N., Omro	Reg. & Gr.	28
Vanderwerff, Tim, Bristol	Reg. & Gr.	22
Vande Zande, Tom, Waupun	Reg. & Gr.	14
Van Roy, Mrs. Mike, Green Bay, R. 3	Grade	17
Van Valen, Sidney, Lake Beulah	Grade	15
Vas, Hugo, Burlington, R. 4	Grade	30
Violet Farm, Randolph, R. 1	Registered	18
Voelker, Emil, Cameron	Grade	16
Voelker, J. J., Burlington	Reg. & Gr.	14
Voight & Rhein, Lomira	Registered	10
Voight, A. H., Valders	Grade	33
Voland, Ervin, Cedarburg	Registered	11
Waelty, Hilmer, Cochrane	Reg. & Gr.	14
Waffenschmidt, R. H., Prairie du Sac	Reg. & Gr.	8
Wagenbach, Martin, Barron	Grade	22
Wagner, Arthur L., Cleveland, R. 1	Registered	29
Wampfler, Jacob G., Rice Lake	Grade	11
Wampfler, J. J., Rice Lake	Grade	17
Ward Bros., Ft. Atkinson, R. 4	Registered	18
Ward Bros., Avalon	Reg. & Gr.	40
Warner, W. H., Salem	Registered	15
Warrer, Edward, Burlington	Grade	17
Wartiak, Wm., Wausaukee	Reg. & Gr.	20
Wasserbach, Mrs. Louise, Appleton, R. 1	Grade	16
Waterworth, J., Columbus	Registered	40
Waukesha County Farm, Waukesha	Registered	36
Weaver, Harry, Elkhorn	Registered	15
Weber, Gregory B., Rice Lake	Grade	10
Weber, Mike, Elmwood, R. 2	Grade	22
Weckler Bros., Ft. Atkinson, R. 2	Registered	25
Wegmann, Ed., Cedarburg	Reg. & Gr.	10
Wehrmann, Arno, Elkhart Lake, R. 1	Grade	13
Weickert, Walter, Appleton	Reg. & Gr.	20
Weis, William, Burlington	Grade	24
Weld & Bark, Holcombe	Grade	18
Welker, H. C., New Holstein, R. 2	Reg. & Gr.	13
Wentzel, Frank, Winneconne	Grade	40
Wenzel, Roy, Sullivan	Grade	25
Wesener, Carl, Mayville	Grade	40
Westcott & Waldo, Bristol	Reg. & Gr.	23
Westfield Bros., Princeton, R. 1	Grade	12
Westphal Bros., Elkhorn	Registered	35

Wieland Farm, Beloit, R. 2	Registered	28
Winkenwerder, Earl, Neenah, R. 3	Reg. & Gr.	21
White, Lee, Darlington	Registered	12
White, Orval, Cumberland	Reg. & Gr.	10
Widman, Mrs. John, Jefferson	Registered	10
Wiedmeyer, A. A. Jr., Richfield	Registered	19

T. B. Tested—15 yrs.

Holstein Cattle

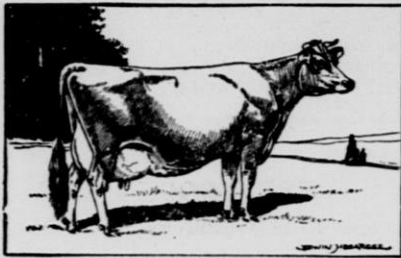
### SILVER BROOK FARM

8 Year Herd Average—11,854 lbs. Milk; 423 lbs. Fat

Ambrose A. Wiedmeyer, Jr. —:— R. 1, Richfield, Wis.

Wilcox & Dahnert, Juneau, R. 3	Reg. & Gr.	30
Willems, Nick S., Barron	Reg. & Gr.	15
Willow Creek Farm, Fox Lake, R. 2	Reg. & Gr.	21
Wilsie, Walter, Brandon	Registered	20
Winnebago Co. Asylum, Winnebago	Reg. & Gr.	122
Wipperman, E. A., Sheboygan	Reg. & Gr.	21
Wipperman, Hubert, Cleveland	Registered	18
Wis. Home & Farm School, Dousman	Registered	15
Wis. Ind. School for Boys, Waukesha	Registered	147
Wisconsin Masonic Home, Dousman	Reg. & Gr.	21
Wis. School for Blind, Janesville	Registered	25
Wis. State Prison Farm, Waupun	Reg. & Gr.	105
Wis. State Reformatory, Green Bay, R. 6	Registered	90
Wisti, William S., Barron	Grade	20
Wittig Bros., Hartford	Registered	11
Woemer, Louis, Plymouth	Reg. & Gr.	26
Wolf, E. Jr., Elmwood, R. 2	Grade	12
Wolf & McCumber, Fond du Lac, R. 1	Grade	16
Wolf, Wm., Elmwood, R. 2	Grade	25
Wood, James, Marshall	Reg. & Gr.	30
Woodcock, E. R., Chilton, R. 4	Grade	14
Woolsey & Davis, Clinton, R. 2	Grade	30
Wutke, A. F., Whitewater	Registered	30
Wyso, Fred, Boyceville	Grade	20
Yahski, Geo. & Leonard, Burlington, R. 2	Grade	20
Yetter, Wm., Coleman	Grade	16
Young, Henry, Barron	Grade	
Zichert Bros, Rosendale, R. 1	Grade	30
Ziebarth, E. J., Columbus	Grade	24
Zieroth, Frank, Rice Lake	Grade	20
Zieroth, John, Rice Lake	Grade	11
Zillisch, G. F., Johnson Creek	Reg. & Gr.	22
Zimmerman, Sam, Belleville	Registered	29
Zipperer, Urban, Cato	Grade	25
Zittlow, Ed., West DePere, R. 1	Registered	15
Zittlow, Wilbert, West DePere, R. 1	Registered	15
Zobel, Edgar, Ripon	Registered	24
Zuehlke, O. A., Oshkosh	Registered	12
Zuehls, Leon, Markesan	Reg. & Gr.	27





**Select Purebred Jerseys For Your Herd  
They Are Beautiful, Efficient Producers**

You will be proud to own a herd of purebred Jerseys for they are profit-making producers of the richest milk, averaging 5.36% fat. They mature early, live long and are adaptable to varied climates.

Exhibiting your Jerseys will be a pleasure for their beauty of conformation will attract attention whether on your farm or in the show ring.

Send for "Jersey Facts."

**THE AMERICAN JERSEY CATTLE CLUB**

**324-WD, West 23rd St., New York, N. Y.**

## **The Wisconsin Jersey Cattle Club**



The Dairy Breed That Assures Social Security. Let Us Tell You About It. Inquiries Solicited.

**Dr. A. F. Rheineck, President**

**John Hoffman, Secretary**

**239 W. Center St., Milwaukee, Wis.**

# JERSEYS



Abramson, Joel, Sawyer, R. 1	-----Grade	10
Ausman, Sam, Elk Mound	-----Registered	18
Bailey, Edwin, Kenosha	-----Registered	15
Bensend, J. B., Turtle Lake, R. 1	-----Grade	9
Blank, Alvin, Grafton	-----Reg. & Gr.	12
Buchs, H. C., Troy Center	-----Reg. & Gr.	30
Bussewitz, Albert, Turtle Lake, R. 1	-----Reg. & Gr.	14
Carter, Clyde, Marinette, Pierce Ave. Rd.	-----Grade	13
Chilson & Dresser, Harvard, Ill., R. 3	-----Grade	24
Christensen, Carl, Peshtigo	-----Grade	15
Cihlar, Mrs. Mary, Algoma	-----Registered	12
Cisler, G. E., Valders	-----Registered	24
Cline, Zenith, Cumberland	-----Grade	20
Connell, J. R., Rockton, Ill., R. 1	-----Registered	16
Craig, Walter & Ed. Tess, Milton	-----Registered	18

## DESIGN RALEIGH NOBLE

Jersey Bulls from dams of known production  
for many generations.

Hampshire, Shropshire and Southdown Sheep  
(Renk and McKerrow breeding)

Registered Hampshire Hogs

BREEDING STOCK FOR SALE

**WALTER SCOTT CRAIG**

Janesville, Wisconsin

Craigknoll Farm, Janesville	-----Registered	10
Dimick, R. I., Almena	-----Grade	14
Douglas, Ellis, Janesville, R. 5	-----Grade	20
Dow, Parker, Whitewater	-----Registered	25
Eddy, Fred, Beloit, R. 4	-----Grade	34
Foster, Howard W., Barron	-----Reg. & Gr.	10
Freeman & Decker, Beloit, R. 7	-----Registered	15
Gil-Bar Farm, Janesville	-----Registered	50
Gillingham, Floyd, Richland Center	-----Grade	18
Guetschow, Edward, Mishicot, R. 1	-----Grade	12

## GIL-BAR FARM JERSEYS

Former Herd Sire—

"Rawleighs Dairylike Majesty" outstanding sire of production and type. First 10 daughters averaged 642 lbs. butterfat.

Present Herd Sires—

"Imp. Blondines Was Wanted" Champion over Island of Jersey, 1926. 8 tested daughters, 2 Gold, 1 Silver, all average 607 lbs. fat.

"Lassy's Oxford Design," outstanding show bull and a full brother to "Oxford Lassy's Design."

Proving is the Biggest Step in Improving

STEWART BARLASS, Mgr. —:— Janesville, Wisconsin

# CRAIGKNOLL FARM JERSEYS

FEDERAL ACCREDITED

NEGATIVE TO BANG'S

Continuously in D. H. I. A. Work Since 1920

Consistently Over 400 Lbs. Fat

J. A. CRAIG, Owner

JANESVILLE, WIS.

Haase, Christ, Menominee	Grade	37
Hammann, Geo., Barron	Grade	12
Harris, George, Ontario	Grade	19
Hawkinson, Jake, Clayton	Registered	14
Hawkinson, John, Clayton	Grade	9
Hoffman, John, Grafton	Reg. & Gr.	24
Holloway, Charles, Sturtevant	Registered	12
Holloway, John, Union Grove	Registered	25
Hugan, Henry, Manitowoc, R. 2	Grade	15
Jacobs, Mrs. E. C., Elk Mound	Registered	47
Jacobson, Rudolph, Poskin	Grade	8
Karnes, Ed. & Son, Menomonie, R. 5	Grade	23
Karnes, Walter, Spring Valley	Reg. & Gr.	15
Kelsey, Bert, Richland Center	Reg. & Gr.	14
Kolowrat, Edw., Kendall	Registered	9
Kolowrat, Frank Jr., Hillsboro	Reg. & Gr.	9
Lamon, Gahlen, Emlwood	Grade	9
Ling, Clarence, Chetek	Reg. & Gr.	20
Lovejoy Estate, Janesville, R. 5	Grade	35
Macafee, Bert, Elkhorn	Grade	20
Miller, Wm. H., Turtle Lake, R. 1	Grade	18
Nelson & Johnson, Marinette	Reg. & Gr.	18
Nordby, Carl, Barron	Grade	16
Olson, Otis, Sawyer, R. 1	Grade	14
Perry, Stanley, Evansville	Reg. & Gr.	22
Rheineck, Dr. A. F., Grafton	Registered	20
Rolf, Herbert, Almena, R. 1	Registered	11
Schlies, Frank Jr., Manitowoc, R. 2	Registered	10
Scribner, Erwin, Comstock, R. 1	Reg. & Gr.	10
Scribner, Glen, Comstock	Grade	10
Shearer, Dr. A. T., Edgerton	Registered	15
Smith & Miller, Cumberland	Reg. & Gr.	24
Snyder, Owen, Footville	Grade	15
Stefl, Joe J.	Grade	18
Stelting, Vern, Ontario	Reg. & Gr.	23
Stockman, A. C., Turtle Lake, R. 1	Reg. & Gr.	16
Stuckman, H. A., Plymouth, R. 3	Reg. & Gr.	17
Taylor, H. C., Beloit		
Thompson, Oscar, Reedsville	Grade	14
Warmington, P. G., Honey Creek	Registered	15
Washburn, G. E., Oshkosh, R. 4	Registered	9
Williams, Judson, Bristol	Reg. & Gr.	15
Wipperman, E. A., Sheboygan	Reg. & Gr.	21
Woestenberg, Henry, Appleton, R. 2		8

## RIVER-HI-LAND JERSEY FARM

Grafton, Wisconsin

SIRES

Nobly Borns

Dreaming Sams

Coronations

Bulls for sale

Official Testing

# .. Milking Shorthorns ..



Arnold, Frank H., Janesville .....	Registered	24
Borg Farm, Delavan .....	Registered	60
Brewer, Floyd, Beloit, R. 7 .....	Grade	8
Cross, A. J., Oshkosh .....	Grade	28
Dane County Farm, Verona .....	Grade	66
Gates & Bass, Beloit, R. 7 .....	Grade	14
Leach, Joe, Burlington .....	Reg. & Gr.	23
Lycan, L. J., DePere, R. 3 .....	Grade	20
Miske, Rudy, Kewaskum, R. 3 .....	Grade	14
Sayre, D. F. & Sons, Edgerton .....		21
Mullendore, C. H., Viola .....	Registered	22
Tait, Joseph, Comstock, R. 1 .....	Registered	6
Wolf, E. Jr., Elmwood, .....	Grade	12

## High School Agricultural Depts.

Baraboo High School, Ag. Dept. ....	Baraboo
Beaver Dam Agric. Dept .....	Beaver Dam
Belmont Dept. of Voc. Agriculture .....	Belmont
Blair Dept. of Voc. Agriculture .....	Blair
Blanchardville H. S. Ag. Dept. ....	Blanchardville
Clayton Vocational Agric. School .....	Clayton
Chilton Voc. Ag. Dept. ....	Chilton
Dunn County Agric. School Dept. ....	Menomonie
Durand Agric. School Dept. ....	Durand
Ft. Atkinson Dept. of Vocational Agric. ....	Ft. Atkinson
Gibraltar High School .....	Fish Creek
Grantsburg Junior Herd Testing Assoc. ....	Grantsburg
Lake Mills Vocational Agric. Dept. ....	Lake Mills
Luxemburg Agricultural Dept. ....	Luxemburg
Oconomowoc High School Agric. Dept. ....	Oconomowoc
Oshkosh Dept. of Voc. Agriculture .....	Oshkosh
Reedsburg Public School .....	Reedsburg
Stanley Voc. Agric. Dept. ....	Stanley
Sturgeon Bay Dept. of Voc. Agriculture ....	Sturgeon Bay
Tri County Union Free High School .....	Tripoli
Tri County Vocational Agric. Assoc. ....	Tony
Union Free High School Agriculture Dept. ....	Wilmot
Waterloo High School Agric. Dept. ....	Waterloo
West Lima Agricultural Dept. ....	West Lima
Wood County School of Agriculture ....	Wisconsin Rapids

At The Dairy Feast

OSHKOSH

March 23

The

**AMERICAN CHEESE**

(Finest Made in Wisconsin)

Will Be Furnished By

**SHEBOYGAN FALLS CO.**

Sheboygan Falls, Wisconsin

**President, O. A. Damrow    Treasurer, Ernst Boll**

(Leaders in Wis. Dairy Industry for 40 years)

**WE FURNISHED AMERICA'S FINEST  
BUTTER FOR THE DAIRY FEAST**

**Oshkosh, March 23**

**OUR ORGANIZATION**

Farmer owned and farmer controlled. Chartered in 1932.  
Contact-membership of 6,700, in 40 counties. Centralizing  
and marketing dairy products from 65 plants.

**STATEWIDE PROGRAM**

1. Stabilizing the cheese markets.
2. Improving the quality of manufactured dairy products.
3. Modernizing Dairy Plants.
4. Providing and maintaining milk deliveries at peak point.
5. Providing finances for needy and worthy Plants.
6. Improving the quality of milk on the farm.
7. Discovery and elimination of costly "Income" leaks in plant operation.  
In 1936—marketed 16,000,000 lbs. cheese; 3,500,000 lbs. butter.

**OFFICERS**

President—H. H. Jack  
Vice-Pres.—G. L. Nichols  
Secretary—H. F. Dries  
Treasurer—Paul Weis

**WISCONSIN CO.OPERATIVE MILK POOL**

Oshkosh

—:—

Wisconsin

# MISCELLANEOUS

Adams, C. -----	Fall River
Becker, John -----	Cumberland
Beckman, Edwin -----	Dale, R. 1
Bolinski, Ben -----	New London
Clark, Warren -----	Beaver Dam
Dierken, Wm. H. -----	Reedsburg
Eke, B. W. -----	Bruce
Erickson, Sanford -----	Cumberland
Finley, Cliff, Am. Guernsey Cattle Club, Minneapolis, Minn.	
Geisler, John -----	Bruce
Guthman, Carl -----	Holcombe
Gutham, Otto -----	Holcombe
Gygi, Henry -----	Holcombe
Hienecke, Gerhard -----	Loraine
Hembre, I. O., Co. Agricultural Agent -----	Barron
Hess, Louis -----	S. Milwaukee, R. 1
Hornick, Mike -----	Sheldon
Huebner, Louis -----	Dale, R. 2
Johnson, Martin -----	Sheldon
Johnson, Mrs. Ruth -----	Dallas
Klotz & Holman -----	Sheldon
Krosovich, Frank -----	Sheldon
Laudon, Frank -----	Appleton, R. 1
Lempke, Le Roy -----	Dale, R. 2
Lindemann, Hans -----	Baronett
Mattison, A., & Son -----	Weyerhauser
Merriman, S. A. -----	Ft. Atkinson
Murphy, Lawrence -----	Hartford
Nelson, Harold -----	Ft. Atkinson
Nielson, Hilbert -----	Barronett
Nisbet, J. C., Sec'y. Wis. Dairymen's Asso. -----	Ft. Atkinson
O'Brien, Thos -----	Tiffany, Box 289
Paulsen, Herman -----	Holcombe
Pavlak, Ray -----	Monroe
Ray, Lyle -----	Medina
Roesler, Edward -----	Dale, R. 1
St. Charles Home for Boys -----	Wauwatosa
Samb, Mrs. Chas. -----	Hortonville, R. 2
Sasman, L. M., State Board of Voc. Edu. -----	Madison
Scheel, Arthur -----	Bruce
Severson, S. E. -----	Cameron
Solberg, A. H. -----	Blair
Solum, Henry -----	Cumberland
Solum, John -----	Cumberland
Stevens, M. B. -----	Ft. Atkinson
Thomson, A. C., Fieldman, W.D.A. -----	Ft. Atkinson
Utschig, Joe -----	Appleton, R. 2
Vergeront, Glen W., Director, W.D.A. -----	Madison
Voight, Edward -----	Thiensville
Waupaca County Asylum -----	Weyauwega
Wiemer, Wanti -----	Sheldon
Witte Bros. -----	Cottage Grove
Ziwisky, William -----	Columbus, R 1

**We Are Going To See That Ice Cream Is Served  
At The Dairy Feast, March 23**

**Wisconsin Association of Ice Cream  
Manufacturers Officers:**

**C. E. Fenlon, President**

**G. H. Stueber, Vice President**

**P. C. Carver, Sec'y.-Treas.**

The Wisconsin Association of Ice Cream Manufacturers was organized 22 years ago. The purpose of our organization is a furthering and promoting of the general welfare of those engaged, in the State of Wisconsin, in the Business of Buying and Selling at wholesale or retail, or distributing ice cream, cream and other dairy products, and those engaged in the production and marketing of such products; protecting and fostering the interests and welfare of the consuming public; increasing and promoting the consumption of Wisconsin Dairy Products throughout the nation; maintaining and improving the quality and purity of Wisconsin Dairy Products, and assisting and cooperating with public and private agencies having the same or similar purposes as this corporation, and the doing of all things incident to the foregoing purposes.

**CERTAINLY A DAIRY FEAST MUST  
INCLUDE QUALITY MILK**

**We Will Furnish the Best for the Dairy Feast  
Oshkosh, March 23**

**OUR ORGANIZATION—**

**Chief interest**—to cement together the common interest of producer and distributor to the end that the consumer will use large quantities of milk and dairy products.

**Our program includes** — quality production, and promoting interest of those in Wisconsin in the business of buying, selling, and distributing, dairy products.

**WISCONSIN MILK DEALERS' ASS'N., Inc.**  
**and**  
**OSHKOSH MILK DISTRIBUTORS**

WE ARE  
HAPPY TO FURNISH

*Quality Cheese*



**MILWAUKEE CHEESE CO.**

OSHKOSH, WIS.

**HEADQUARTERS FOR  
EQUIPMENT AND SUPPLIES**

**For Dairy Herd Improvement Associations**

Our New Improved 24 Bottle Aluminum Babcock Hand Tester with **Water-Tight Bowl** specially priced at \$26.00! This permits the use of hot water for heating the bowl. The Gears run in grease, weighs less than 40 lbs. and is very convenient to carry on the job. The complete Testing Equipment with Improved 24 Bottle Aluminum Tester at \$48.50.

write for price-list

**WISCONSIN DAIRY SUPPLY CO.**

Whitewater - - - Wisconsin



. . . NOTES . . .

---

. . . NOTES . . .

---

. . . NOTES . . .

---

# **MORE Silo Filler For Your MONEY**

Full 14-inch cut; 84 square inches of effective throat area or cutting section. Four knives instead of three—extra set furnished. Ten lengths of cut. Highest grade heavy-capacity ball bearings on main shaft. Knife grinder with special low-speed wheel included in price of filler. More capacity for its size, for the power it takes, for the crew it requires, yet costs no more. Cuts cleaner, silage keeps better, less spoilage and less wastage in feeding. Costs less to run, pays more to use. See this great silo filler at your Case dealer or branch house.

**J. I. CASE COMPANY**

Racine, Wisconsin

**CASE  
SILO FILLER**