

## **Cue. Volume VII, Issue 19 December 16, 1972**

[s.l.]: [s.n.], December 16, 1972

<https://digital.library.wisc.edu/1711.dl/SMA5A7P2GJMTA8O>

This material may be protected by copyright law (Title 17, US Code).

For information on re-use see:

<http://digital.library.wisc.edu/1711.dl/Copyright>

The libraries provide public access to a wide range of material, including online exhibits, digitized collections, archival finding aids, our catalog, online articles, and a growing range of materials in many media.

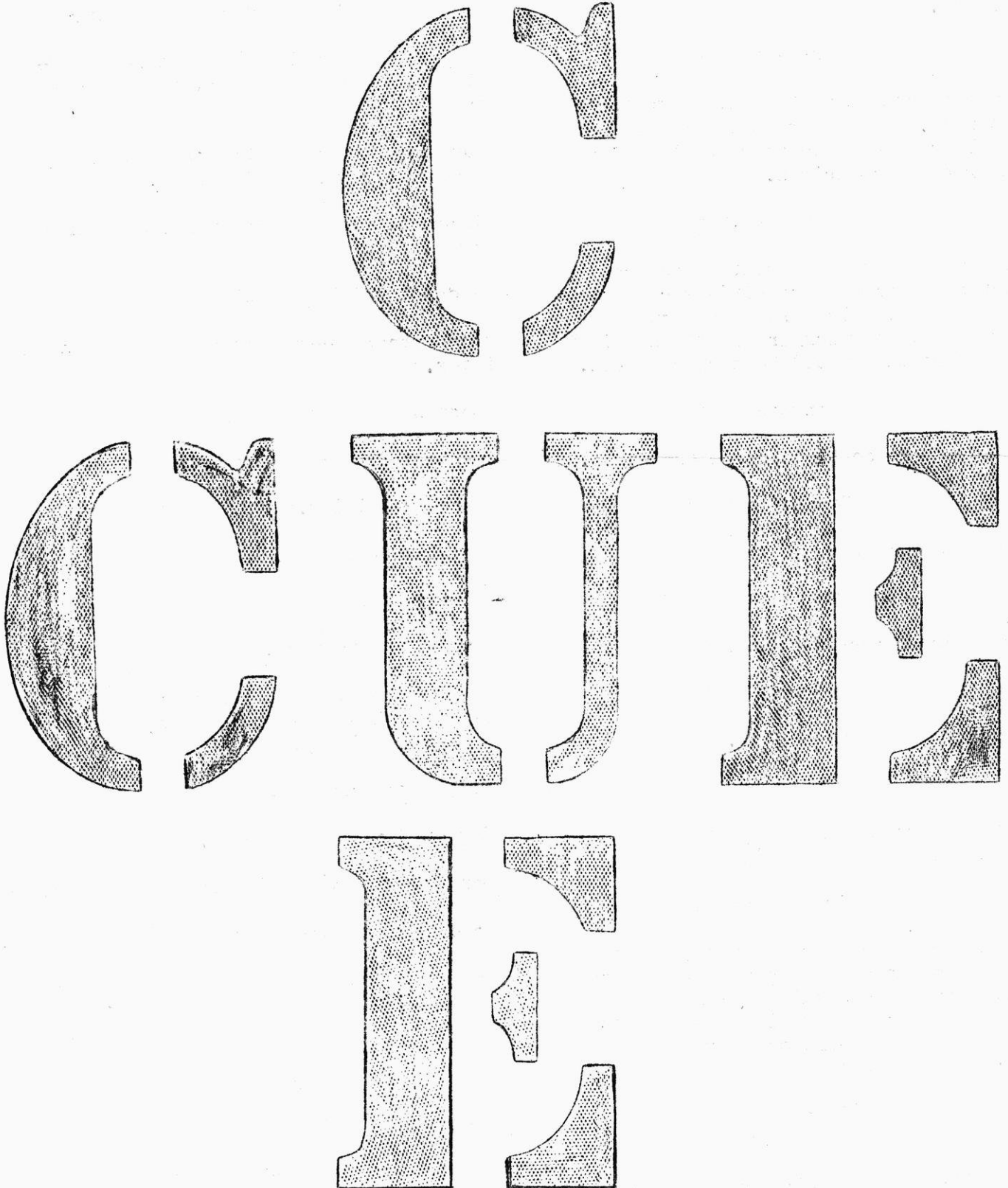
When possible, we provide rights information in catalog records, finding aids, and other metadata that accompanies collections or items. However, it is always the user's obligation to evaluate copyright and rights issues in light of their own use.

Mrs. Farrow RN

VOLUME VII

DECEMBER 16, 1972

ISSUE 19



# ISSUES & ANSWERS

HOW COULD YOUR WARD BE MADE MORE ENJOYABLE?

"Bring some things from O.T. for us to do on week-ends. Get a humidifier in the dayrooms, and get the library open for 2 or 3 hours on Saturday afternoon."

Mary

"Be more congenial to other members of the ward. Be interested in others' problems--they make your problems look smaller by comparison."

Kathy

"The ward could be kept a more comfortable temperature--it's warm most of the time. The ward also could use new dust mops which are small and light weight so they would be easier to use."

Anonymous

"Couple more soft chairs on the wards."

Gerald

"TV that works."

Robin

"More parties on the ward."

Barbara

"Be able to stay up later."

Rone

"Putting boys and girls together on the wards in Hughes Hall."

Richard

"Patients on A-1 should have the same rights to smoke as those patients on A-4. They also should be able to have their girlfriends visit them on the ward and they should be allowed to put up pin-up pictures."

Jerry

Rone Kyle

The following comments are all anonymous:

"Men aides on the girls' side of Hughes Hall."

"Hughes Hall would like more and longer home visits."

"Patients should not be locked in their rooms with their furniture removed, nor in their rooms at all, without an exceptionally good cause and it should not be done in an arbitrary manner."

"Hughes Hall patients should be allowed to use the tunnel system at all times."

"Let the patients be more active in decisions regarding the ward."

"Less sitting on the ward, more programs."

"I don't think it could."

"More programs--better physical activities."

"More social functions."

"Contented."

"More activities."

"I think it's fine."

"Colored TV."

"Coffee on the ward."

"People should be allowed to sleep or lie down when they are not required to be at an activity."

"Keep wards cleaner."

"Rug on floor of TV rooms."

"Don't know a way it could be improved."

"More comfortable chairs."

"More telephones."

"I would like to see a record player."

Carol

"Bring some beer here."

Rusty

"Sleep every morning."

Ed

# ISSUES & ANSWERS

"Have more freedom. (Get rid of night aides")

Donald

"More cooperation and bigger mops."

Sidney

"Color television."

Tony

"Stereo."

Costello

"Instant coffee on the ward."

Ralph

"They should have color television on the wards."

Gary

"There should be more group therapy on the wards."

Wayne

"Let everyone go home."

O.T. Therapist

"Regular type furniture should be allowed on all wards."

Dave Kloiber

"Each ward should be co-ed. They need more decorations on the ward."

Dave

"Put a punching bag in each room so patients don't have to fight each other."

Kris

"Have more special functions for the weekend shut-ins such as they had in the Sherman Hall cafeteria last Saturday, Dec. 9th."

Al

"Improved communications between staff and patients."

Cully

"Brighter drapes on the windows".

G?H.N.

"We do not like the 10:30 P.M. bed-check procedures wherein we have to go to our rooms and stand until they check our bodies in as present and accountable. This is very arbitrary and is not required by the fact that we are the only ward in the hospital that has to go through this degrading procedure".

G.H.N.

"Would like to crochet in my spare time".

G. H.S.

"On G.H.S. the patients would like the Volunteer service to look into the library area and bring the magazines and periodicals up to date. At the present time the items are over a year old and this makes it very hard for them to relate to the present times and what is taking place outside of the hospital in their society. Their suggestions were as follows: Update the Readers Digest, get Detective Magazines, Sports Magazines, Farming Magazines, Field and Streams, Ladies Home Journals, Home Making, Needlework Magazines, Dress Making Magazines, Hobby Magazines, and a magazine concerning national affairs."

G.H.S.

"More bowling and workouts in the gym during R.T."

Jim

"Attempt to match up roommates as to age and personalities."

George

"I find that there lacking a clear-cut patient motivation program wherein there is open discussion from the staff as to current events that are taking place."

No. 3125

"I think patients should change their underwear more often."

Bill

# LETTERS to the EDITORS

THE FOLLOWING LETTERS DO NOT NECESSARILY REFLECT THE VIEWS OF EITHER THE CUE OR THE EDITORIAL STAFF. ALL LETTERS SHOULD BE LIMITED TO 250 WORDS AND MUST BE SIGNED WITH THE NAME OF THE AUTHOR. UNSIGNED LETTERS WILL NOT BE PUBLISHED UNDER ANY CIRCUMSTANCES. ALTHOUGH NAMES MAY OCCASIONALLY BE WITHHELD ON REQUEST IF THERE IS SUFFICIENT REASON.

THE CUE RESERVES THE RIGHT TO EDIT ALL LETTERS FOR LENGTH, TO CORRECT GRAMMAR AND SPELLING OR TO EXCISE PROFANE OR LIBELOUS STATEMENTS.

THE CUE

\* \* \* \*

TO THE CUE:

It is an unfortunate and an almost pitiful situation to progressively observe the fear that is instilled in many of the patients at WSH. A new patient is very quickly and very justifiably so, orientated by veteran patients to take orders, absorb abuse, criticism, and to keep his mouth shut in or among the presence of staff personnel or other patients in which he cannot place in complete confidence or trust for fear of having his ward doctor become aware of his adverse opinion of ward rules, conditions and staff personnel. If they survive under this protective umbrella of silence and obedience, it seems to considerably shorten the period of time which they have to spend as a patient at this hospital. It appears at times that these disciplined patients leave the hospital in the same condition they were in when first committed.

(The writer wishes to remain anonymous for fear of repercussions.)

\* \* \* \*

TO ALL THE PATIENTS, FACULTY AND STAFF AT WINNEBAGO:

A sincere thank-you for all you have given us during the past 12 weeks. You will always be a part of us.

Student Nurses from:  
St. Joseph's  
Mercy

TO THE STAFF AT THE ATU:

I wish to thank each and every member on the "Staff" at the ATU, for the very fine treatment I received to help me arrest my problem with alcohol.

Now that the time has at last arrived for me to go back to the "Concrete Jungle", as Dr. Brown calls it, I've got every reason in the world to believe I'm able to lead a healthy, productive, sober life. The staff at the ATU have given me all the tools to lead a life of "Sobriety." My actions out in the "Concrete Jungle" to keep a life of sobriety will say a lot more thanks to all the staff than a whole page of "Thank You's."

My sincere appreciation and gratitude to the Staff at the ATU.

Ted E.

\* \* \* \*

TO ALL YOUNG ADULTS OF SHERMAN 1 & 2:

We, the staff, would like to again thank you for the wonderful, efficient, thorough job of house cleaning done on the wards, Dec. 2, 1972. Your cooperation and eagerness was greatly appreciated.

Thanks again from the staff of Sherman 1 and 2.

\* \* \* \*

## CUE EDITORIAL STAFF

Jim  
Gary  
Julie  
Ethel  
Sid  
Wayne  
Cully

Advisor:  
Chuck Lemieux

# RELIGIOUS VIEWS

## THREE DAYS

There are two days in the week upon which and about which I never worry. Two carefree days kept sacredly free from fear and apprehension.

One of these days is yesterday. Yesterday, with its cares and frets and all its pains and aches. All its faults, its mistakes, and bluntness, have passed forever beyond my recall.

It was mine; it is God's.

And the other day I do not worry about is tomorrow. Tomorrow, with all its possible adversities, its burdens, its perils, its large promise and poor performance, its failures and mistakes, is as far beyond my mastery as its dead sister, yesterday.

Tomorrow is God's; it will be mine.

There is left for myself then but one day in the week -- today. And man can fight the battle of today. Any woman can carry the burdens of just one day. Any man can resist the temptation of today. It is only when we willfully add the burdens of these two awful eternities, yesterday and tomorrow -- such burdens as only the mighty God can sustain -- that we break down. It isn't the experience of today that drives men mad. It is the remorse of what happened yesterday and the fear of what tomorrow might bring.

These are God's days. Leave them to him.

Edited by:  
Cully

## CHAPLAINS' SERVICE ANNOUNCEMENT

The chaplains recently started new plan for relating to patients on the various wards, and to the ward staffs. Except for Chaplain Winter, who will continue to visit Lutheran patients throughout the hospital, the chaplains have divided all the ward areas among them. Each ward will have one chaplain (Father Barrett, Chaplain Carlson, or Chaplain Van Deusen) who will represent the other chaplains by his presence and his visitation on that ward. Each chaplain will do the basic personal visiting, pastoral care and counseling with patients on the wards to which he is assigned, including persons of any denomination.

Where it appears that a patient has needs that ought to be met by a pastor of his own denomination or faith group, the chaplain on that ward will call in the other chaplain who is needed. In other words, any chaplain will still be available to a patient on any ward, but only one chaplain (in addition to Chaplain Winter) will visit regularly on any ward. The reason is to eliminate much overlapping of chaplains in their patient contacts and thereby make possible more effective use of the chaplains' time, as well as a more adequate and uniform coverage of all the wards in the hospital.

Church services will not be affected -- these will be conducted just as they have been before. The following are the wards assigned to each of the three chaplains:

### FATHER BARRETT

Sherman 5,6,7 & 8  
Gordon Hall North

### CHAPLAIN CARLSON

Kempster Hall 1W & 2W  
Sherman Hall 1 & 2  
Hughes Hall A  
North Cottage

### CHAPLAIN VAN DEUSEN

Kempster Hall 2E & 3K  
Sherman Hall 7 & 8  
Gordon Hall South  
Hughes Hall B

Chaplain Van Deusen



# POETRY

# A PATTERN TO LIFE

As clergy proclaim,  
We do ordain.  
With reality known,  
We review the total alone.

The basic is adjust,  
 Avoids the rust.  
 We hope to see realism total,  
 Thus in regular form road to ill  
 With adjustments value,  
 The resignation is reality to you.

"Cully

IN GOD'S HAND

Forseen are important figures,  
To through basics in rigours.

Gary

# NO TOMORROWS

Strength for today is all that you need-  
For there will never be a tomorrow-  
For tomorrow will prove just another  
  today-  
With all its measure of joy and sorrow.

"Cully"

LOVE

A bell is no bell until you ring it-  
A song is no song until you sing it-  
And love in your heart wasn't put there  
to stay-  
Love isn't love until you give it away.

"Cully

MARK KISSED ME

Mark kissed me, jumping from the chair  
   he sat in;  
Time, you thief, who loves to put  
Such sweets on your list--put that in!  
Say I'm weary, say I'm sad, say that  
Health and wealth have missed me;  
Say I'm growing old, but add  
Mark kissed me!

"Cully"

TROUBLE

Marcia

It's easy to grow down hearted  
If nothing goes your way.  
It's easy to grow discouraged  
If you have a troublesome day.

But, trouble is only a challenge  
To spur you on to achieve  
The best that God has to offer  
If you have the faith to believe.

"Cully"

To walk alone is to travel a lone way;  
To walk the path made for one man,  
The man who walks this path is a lonely  
man;  
I know 'cause I'm that man.

Snowbank decaying,  
Now is the time for dying,  
Yet, the Robin sings.

Terry

W.

# OPEN HOUSE SUCCESS

You might not be able to tell books by their covers, but you can tell a library by its lovers--of good reading and pleasant surroundings. Both of which are in good supply at the newly-renovated Patients' Library here at WSH.

One hundred thirty-five persons, including patients, staff and friends, enjoyed an open house Wednesday, December 6th. The library, located in the basement of Sherman Hall, has fresh cream-colored walls, a new ceiling, new light fixtures and new floor tiles. The morning sunlight streams warmly through royal-blue draperies.

The library's modern audio-visual equipment, including filmstrips on all subjects, filmloops, a projector, tape recorder and tapes were viewed by visitors during the open house. Filmloops are super 8mm films enclosed in a cartridge, and deal with daily living skills. Several book companies provided pamphlets and paperback material to give away.

In addition the library has records for the recreational use of patients in the library proper. A number of these records are borrowed from the Extension Services of the Oshkosh Public Library.

(When one thinks that libraries are now providing tapes for patrons, one can say that in addition to creating "book-worms," a library might now create a few "tape-worms!")

Art prints--inexpensive and attractive--are loaned to patients to hang in their rooms or dayrooms. The library also has talking books, borrowed from the Regional Library for the Blind and Physically Handicapped, Milwaukee.

The library services are diversified and now feature the following, in addition to those already mentioned: Book cart service to all wards to reach patients who are unable to attend the library proper, and an inter-library loan service, offered to patients and staff to supply materials not in the library collection.

Mrs. Joyce Marsh, librarian, said that the library provides and meets the educational, vocational and recreational needs of the patients. An innovation in the "very near future" will be record listening in the special activities room in the library.

Mrs. Marsh further stated that the objectives of the library are: To support, broaden and strengthen the total rehabilitation program; to adapt conventional services to the special needs of the residents and it should fully utilize non-book materials, and to provide a facility which is realistically presented to assure a familiar carry-over between the community library and the institution library.

The Patients' Library has 2,500 hardcover books, with a goal of 6,500, Mrs. Marsh said. There are 1,800 paperback books; 120 large print books; 30 magazines; 120 newspapers from the communities where the patients reside; 117 art prints; 30-50 records; 20 filmloops; 30 filmstrips, and the talking books.

The library is open Monday through Friday from 8 to 12 a.m. and 1 to 4:30 p.m. It is open to all patients, staff and affiliating students.

The open house visitors enjoyed a cup of coffee as they wandered about the library.

E.H.

---

If you think you are beaten, you are.  
If you think you dare not, you don't.  
If you like to win, but you think you can't,  
It is almost certain you won't.

If you think you'll lose, you're lost,  
For out in the world we find,  
Success begins with a fellow's will,  
It's all in the state of mind.

If you think you are outclassed, you are.  
You've got to think high to rise.  
You've got to be sure of yourself before,  
You can ever win a prize.

Life's battles don't always go,  
To the stronger or faster man,  
But sooner or later the man who wins,  
Is the man who thinks he can!

Submitted by  
Jim



# What You Should Know

Volunteer Services is located in the basement of Sherman Hall. Many patients, including this writer, have heard of the Fashion Korner but it appeared obvious that many of them do not take full advantage of this service; and for that matter are not aware of the additional services that this department has to offer.

Volunteer Services is co-ordinated, directed, and under the capable leadership of Jim O'Reilly. Jim is a very busy, dedicated and knowledgeable man.

He initially indicated that Volunteer involves many things. There is, of course, the Fashion Korner which makes available to patients, at no cost, all types of clothing imaginable to provide a wardrobe which would convert any man or woman into the category of distinction. Some of these clothes are new and some are used. All are in good wearable condition. Patients can select whatever they wish and it becomes their property. Public volunteer help sorts, selects, mends, repairs, and presses the clothing prior to placing it on the racks.

There is a game library with every conceivable type of game available. Volunteers again circulate these games throughout the various wards and if necessary give instructions in their use. The games are circulated among various halls similar to a library operation.

There is a book library service. If the patient is unable to visit the library for a specific reason, volunteers bring the library to the patient. Craft work is also made available to all patients to do with whatever they wish.

Additional services provided include manicures, facials, playing cards with patients, writing letters for them, and practically everything else within the scope of the imagination to help the patient improve his well being. There are special events during the course of the year when Volunteer puts forth extra effort, such as for Christmas they take patients on shopping trips, provide decorations, Christmas trees, parties, gifts, goodies, etc. This considerate effort is also directed to the individual patient on his or her birthday.

The volunteers are motivated to carry the story of Volunteer Services back to their respective communities to encourage private and public groups to donate services, theatre tickets for plays or movies, special entertainment, or anything else that may benefit the patients at W.S.H. The response received endorses the success of the program since approximately \$3,000. per month is donated, and volunteer help is sufficiently available. By contrast, Jim has done every conceivable thing to carry the story of W.S.H. to the public to convey to them what can be done for the patients as far as mental health is concerned.

Jim is presently attempting to encourage families to more or less adopt a patient so the patient can rely on his benefactor to assume the responsibilities now being accomplished by Volunteer.

This is Jim O'Reilly's story of Volunteer Services. Volunteer Services IS: "JIM O'REILLY".

C. F. "Cully"

JUSTICE HAS FINALLY REACHED US

On Oct. 18, 1972, the U.S. District Court for the Eastern District of Wisconsin set forth the first and very most important findings and decisions of Constitutional law relating to the commitment of Wisconsin citizens into mental institutions of Wis.

Each and every patient at this hospital will be greatly affected by this ruling, either directly or indirectly in order for them to get a speedy return to their home communities.

The purpose of this article is to reduce this decision into a simple form so that all patients are aware of their Constitutional rights in the future.

\*\*\*\*\*

## II

FINDINGS OF FACT

1. That citizens were not getting a proper procedure of notice as to what was going on.
2. They were not given an early and proper pre-hearing procedure wherein they were clearly informed of their Constitutional rights: To remain silent and not talk to the psychiatrists; the rights to counsel at all stages of the preliminary procedures of examinations by parties representing the State and that the court will and must appoint counsel, of their choice; if they are poor and have no money, so that this lawyer will be with them when the psychiatrists make their examinations, so that the lawyer will be able to prepare a constitutionally proper defense; the rights to jury.
3. That there was no reasonable statutory standards to a speedy hearing procedures.
4. That citizens were not present at all of these hearings, nor were they being seen by the court as Wisconsin Statutes required.
5. That they were being judged on assumptions and hearsay evidences.
6. That they were not offered less restrictive care and treatment procedures first within their own community.
7. That after commitment to a state mental institution they were not getting proper and reasonable treatment procedures that were conducive to their speedy and healthy return to their home communities.
8. That a citizen once confined in a mental institution would be subjected to a more hostile return to normal functions in society than those faced by a felon, who has committed a crime.

(Note: Citations taken from Sections "B" and "C" of transcript cited

on pages 44 to 78.) U.S.Dt.E.D., Milwaukee, Wi., Lessard vs. Schmidt, 70-C-602.

\*\*\*\*\*

## III

DECISIONS OF CONSTITUTIONAL LAW

1. The Wisconsin Commitment Statutes are constitutionally defective.
2. That the State did not require effective and timely notice of charges.
3. That the State failed to require adequate notice of all Constitutional rights, including jury trial.
4. That the State permitted detention longer than two weeks without a "full" hearing on the necessity for commitment.
5. That the State permitted detention longer than 48 hours without hearing on probable cause.
6. That the State permits commitment based upon a hearing in which the person charged with mental illness is not represented by adversary counsel, "at which hearsay evidence is admitted."
7. And in which psychiatric evidence is presented without the patient having been given the benefit of the privilege against self-incrimination.
8. That the State permits commitment without proof beyond a reasonable doubt that the patient is both "mentally ill and dangerous."
9. And that the State fails to require those seeking commitment to consider less restrictive alternatives to commitment.

(Note: Cited p. 79, Section IV of transcript.)

\*\*\*\*\*

## IV

ORDERS OF THE COURT

1. That this case directly covers all Wisconsin citizens 18 years or older, who have been involuntarily committed.
2. That the State be allowed a 90-day period to conform to the procedures outlined in this opinion.
3. That during this 90-day period the State officials must review all the cases of the un-named plaintiffs.
4. The State officials, in some cases, may seek to change the patient's status from involuntary to voluntary commitments.
5. In other cases may decide that release is necessary.
6. That the State should aid these patients in readjusting to society, enlisting the aid of State social agencies and perhaps commencing the release with day-time release programs or the utilization of half-way houses

continued from page 9

facilities.

7. That if the State officials find, by proper fact finding methods, that a patient is mentally ill and also a danger to themselves or others, beyond all reasonable doubt, they will then proceed within the 90 days to arrange for new hearings before a proper court of law.

8. That the States officials will proceed to insure that these hearings conform with this opinion.

9. That the States officials must insure that counsel is appointed in time to be present at all stages of the proceedings, including all pre-hearing interrogations to establish facts and conclusions.

(Note: Cited pp. 80-81 as referred to before.)

\* \* \* \* \*

#### CONCLUSIONS BY THIS WRITER FROM THIS CASE.

1. This decision directly affects involuntary commitments.
2. That this decision indirectly affects all other mental institutions patients, such as: Citizens under 18 years of age; voluntary commitments; elderly citizens; drug addicts; alcoholics; and sex and criminally insane commitments.
3. That a mental patient or citizen suffering from illnesses of the mind cannot intelligently waive their constitutional rights.
4. That if a citizen suffering from illnesses of the mind are not dangerous to themselves or others beyond all doubt the State officials must proceed immediately to return the individual citizen to the least restrictive program that would concur with their given illness or problem.
5. The exploratory burden lies completely upon the States officials to find these proper remedies at once, and before the 90 days are up on January 17th, 1973, and then show how they intend to institute and to conform to this decision after Jan. 17, 1973.

Prepared by #3125

P.S. Any questions on the above matters send them in care of Letters to the Editors and refer to the following: Lossard vs. Schmidt, 70-C-602.

WATCH FOR OUR SPECIAL HOLIDAY ISSUE  
ON DECEMBER 23rd!

#### CLUE TO FINDING OSHKOSH DAILY NORTHWESTERN.

Patients are advised to follow the following procedures in order to be able to read the Oshkosh Northwestern newspaper. (Note: These papers are made available to the patients of this hospital, without charge to us, by the generousities of our fellow American citizens of the Fox Walley who send James O'Reilly money from their hard earned labors, so that Jim can pay for the subscriptions.)

1. The papers are suppose to be delivered to the wards around 4:30 p.m. Monday through Saturday and their first point of entry is the nursing station.

2. The number of papers to each ward varies with the number of patients on each ward.

3. The following procedures of censorship by hospital employees takes place before the patient is allowed to read ("their") paper:

- A. The P.M. employee's censorship crew.
- B. The night shift censorship crew.
- C. If the two above procedures of censorship do not find anything useful to them, that they will need the paper at home and there is not anything news worthy to the patients or harmful to them the newspaper ("may") get to the day room.
- D. Suggestion to my fellow patients: Contact your I.T. assignment worker and get one of your fellow patients assigned to the employee's wastebasket detail the first thing the next morning after the newspapers come out and whatever is left of it can be found in the wastebaskets when the patient empties the wastebasket from the nursing station.

By No. 3125

#### TV AND RADIO BLOOPERS

Announcer: "Marshal Dillon preserves law and order tonight on Guns and Smoke."

\* \* \*

Sportscaster: "Sports fans! Stay stowed for the Stuper Bowl."

\* \* \*

A CREED FOR THE HUMANE CARE OF THE MENTALLY ILL

Do unto others that which you would want them to do unto you.

We do not want your pity, only your understanding. Look at us rather than down on us.

Evaluate us, then guide us. Do not judge us, then punish us for we know not what we do.

Be kind, humane, understanding and compassionate to our illness' for they are not of our willful making.

God created but one perfect human and He died on the cross for all of us. So do not judge that which you cannot, only comfort those that are disturbed.

Modulate your voice in such a way that those that are ill under your care clearly understand the kindness you have for them in their hour of pain.

Do not command them to come unto you, but rather go unto them during their hour of need and understanding.

Comfort them. Speak softly to them in a way that they know you are with them.

Do not cast them off or seclude them from their fellow human beings unless one of you that care for them remain at their side and comfort them; never leave them alone.

Help them with kindness to understand themselves, then guide them with humane care to improve themselves.

Let them vent verbally no matter what they may say, but listen closely for often the key to helping them may be here.

Know the laws that you work under, clearly, so that when they are confused as to why they are here, you can answer their need.

Do not judge on assumption and merest of facts. Rather secure all the facts so that your judgement is fair.

Abolish restraints except in the most rarest case. Rather use a hypc with medicine enclosed to control them in their moments of distress. We do this to animals, why not to man?

Do not cast them from wife, husband, children or friends. Teach them to function with all of them.

--by S. J.

PSYCHOLOGICAL QUIZ

QUESTION 1. Would you like to be anyone other than the person you are?

Yes \_\_\_\_\_ No \_\_\_\_\_

QUESTION 2. Would you like to be 12 years old again and relive your life?

Yes \_\_\_\_\_ No \_\_\_\_\_

QUESTION 3. Vocationally speaking, would you like to be doing anything other than what you are doing?

Yes \_\_\_\_\_ No \_\_\_\_\_

(ANSWERS ON PAGE 12)



# HOLIDAY EVENTS

Christmas parties, teas and other special holiday events will be enjoyed by the patients of WSH over the holiday season.

From Dec. 15th to Jan. 3rd, the Hughes Hall unit will be closed for the annual Christmas vacation. But before the young people go home, there will be Christmas parties. The Disabled American Veterans Organization will give a party, and punch and cookies will be served to parents when they pick-up their child. Pictures have been taken of each patient to send as Christmas cards.

Sherman Hall wards 1 and 2 have several events planned for the holidays. Patients who cannot go home will be taken out to dinner; will go to hear a Christmas concert at Oshkosh High School; will have a tour of Fond du Lac to see the Christmas decorations, followed by refreshments. On Christmas Eve presents will be exchanged and refreshments served.

Also taking a bus to Fond du Lac to see the decorations will be Kempster 2 West. They also will have shopping trips and a ward party Christmas Eve. This group also is going to Appleton to see the sights.

A busload of patients and staff braved the sub-zero temperatures Monday, Dec. 11th, and went to Automa where they cut 20 trees for the wards. They bundled up in warm clothing and took lunches.

The surgery ward on the third floor of Kempster would appreciate having carolers visit the ward. Because of the physical ailments of the patients no formal activities are scheduled.

Gordon Hall South had a Christmas party for patients, friends and relatives on Dec. 10th. On the 19th there will be a Christmas tea and Christmas Eve there will be the usual opening of gifts.

Gordon Hall North will have a social get-together on Christmas Eve and on New Year's Eve there will be a dance and refreshments with patients from other wards invited.

Kempster 2 East is having a tea for patients, relatives and friends on the 17th. On Christmas Eve gifts will be distributed and refreshments served.

Sherman 5-6 will have a patients' tea Dec. 15th. On Christmas Eve Sherman 7-8 will have cookies and egg nogs and will exchange gifts.

The past Wednesday and the coming Wednesday the Sing-a-Long with Barry Levine will feature caroling the first half hour. Christmas records are available for the wards, he said.

The activities at the Canteen include bingo the 16th and record listening and dancing the 23rd. There are new Christmas records in the juke box, and there will be a record hop the 30th, as a New Year's dance.

## CHALLENGE

The biggest white lie is "peace on earth;"

For peace on earth is not.

And another is "goodwill toward men," which mainly is forgot.

And as long as there are hungry babes,  
And as long as there is war.

I mean to find some other paths  
Than I have trod before.

I mean to find some ways to make  
Christmas become more true;  
And follow patient, I'd like to ask,  
What do you intend to do?

C.W.

## ANSWER TO PSYCHOLOGICAL QUIZ

Analysis: 200 psychologists throughout the country compiled these three questions and thousands of people of the ages of 21 and up were asked to answer them. The psychologists concluded that if the answers were "NO" to all these questions, you were for all practical purposes considered normal. Approximately 80% of the people asked answered "NO" to all three questions!



# If The Shoe Fits

## A TYPICAL DAY IN THE LIFE OF A "DYNAMO":

Webster defines "Dynamo" as: "An individual possessing great or unusual force or energy".

Our All American Boy generally awakens between 3:00 and 3:30 A.M. He hops out of bed like a tiger and quickly jumps into some casual clothes. He heads for the nearest all night restaurant carrying his briefcase. Upon entering the restaurant he searches out a quiet corner and immediately orders coffee, coffee, and, more coffee. During the next three hours while absorbing more caffeine, he opens his briefcase, pulls out his tape recorder and notes, and proceeds to dictate reports, letters, notes, etc., in order to have a days work prepared for his secretary when she reports for work at 9:00 A.M.

With taping completed our dynamo has his usual breakfast of eggs and toast, which are consumed slowly. When finished at approximately 7:30 A.M. he heads for the local health club where he exercises vigorously for approximately a half hour after which he showers, shaves, changes into his grey flannel suit with shirt and tie and heads for the office.

He is greeted by his secretary with a cheerful, warm, smile. A few words without any necessary meaning exchanges. The mail is checked and 95% of it is turned over to our Miss Friday because she has been trained to know how to handle most situations without being told. The remainder of the mail is quickly disposed of by our dynamo. He concludes his office time by returning phone calls from the previous day.

He then leaves the office to follow a prescheduled work procedure and accumulates notes to dictate the next morning. A half hour is taken for a quick nourishable lunch after which he checks with the office to find out if anything has happened that would require immediate attention.

His afternoon work hours are spent much like the mornings, that is gathering more notes and detail until approximately 4:00 P.M. when his work day is ended he heads for home. A cocktail or two, conversation with the family, and then dinner, which is consumed deliberately but slowly. A short nap of about a half hour follows after which there is T.V., newspaper, cards or just plain conversation with the wife.

Between 9:00 and 9:30 P.M. his day is ended. He goes to bed. He falls asleep quickly leaving the days problems behind and not particularly concerned about what is going to happen tomorrow. He is content, mellow, and, confident that something has been accomplished.

So describes our "Dynamo". He is a patient at W.S.H. I wonder why?

Anonymous

<p>CAR WASH at Service Building Garage FRIDAYS 1-4 p.m. SATURDAYS 1:30-4:30 p.m.  Outside only \$1.00 Inside and Outside \$1.50  Receipts Used To Improve Sherman 1 &amp; 2</p>
---

# THE WEEK AHEAD

HOSPITAL ACTIVITIES FOR THE WEEK OF DECEMBER 18 - DEC. 24, 1972

Monday Dec. 18	9:00 am - 4:00 pm 1:30 pm 2-E 2:30 - 4:00 pm HH Music Rm. 6:30 pm HH Barracks	CANTEEN OPEN Kings Daughters RECORD LISTENING Woodworking
Tuesday Dec. 19	9:00 am - 4:00 pm 9:00 am - 11:30 am All Wards 6:30 pm GHS 1:30 pm 2-W	CANTEEN OPEN Book Cart Business Women of Oshkosh Winn. Co. Medical Aux.
Wednesday Dec. 20	9:00 am - 8:00 pm 1:15 pm SH 7-8 1:30 pm GHS 2:30 pm - 4:00 pm HH Music Rm. 6:15 pm Canteen 6:30 pm GHS 7:30 pm Chapel	CANTEEN OPEN Appleton Red Cross Lutheran Ward Service Rev. Winter RECORD LISTENING SING & SWING Lourdes High School LUTHERAN SERVICE Rev. Winter
Thursday Dec. 21	9:00 am - 8:00 pm	CANTEEN OPEN
Friday Dec. 22	9:00 am - 8:00 pm	CANTEEN OPEN
Saturday Dec. 23	10:00 am GHS 12:00 am - 8:00 pm	FaVorite Hymn Recital Mr. Korn CANTEEN OPEN
Sunday Dec. 24	C H R I S T M A S E V E 8:45 am Chapel 10:00 am Chapel 12:00 am - 8:00 pm	PROTESTANT CHRISTMAS SERVICE - Rev. Winter CATHOLIC MASS Fr. Barrett CANTEEN OPEN

\*ALL activities in CAPITAL LETTERS are for all patients.

PATIENT LIBRARY, SH BASEMENT: OPEN 9am - 4pm M thru F

kc