

## **Wisconsin women's hockey: Here and now! 1999-2000 inaugural season.**

Capobianco, Paul

[Madison, Wisconsin]: University Publications, 2023-01-17

<https://digital.library.wisc.edu/1711.dl/RQXRN6OUFTDAZ8Y>

<http://rightsstatements.org/vocab/InC/1.0/>

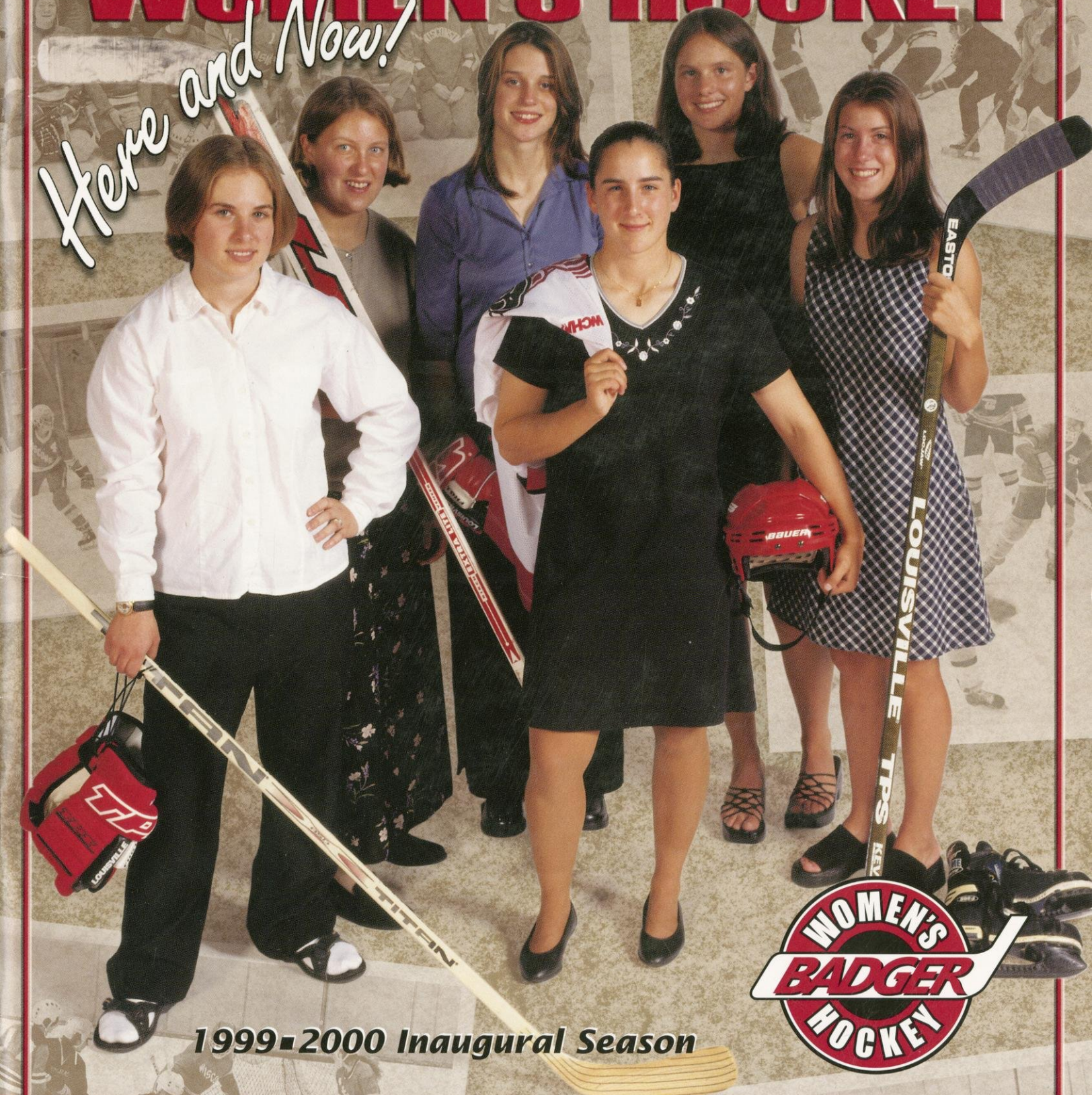
The libraries provide public access to a wide range of material, including online exhibits, digitized collections, archival finding aids, our catalog, online articles, and a growing range of materials in many media.

When possible, we provide rights information in catalog records, finding aids, and other metadata that accompanies collections or items. However, it is always the user's obligation to evaluate copyright and rights issues in light of their own use.

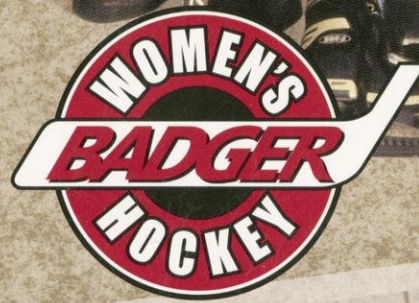


# WISCONSIN WOMEN'S HOCKEY

*Here and Now!*



1999-2000 Inaugural Season



UNIVERSITY OF WISCONSIN-MADISON





# Wisconsin Women's Hockey



Scenes from the inaugural night, Friday, Oct. 8, at the Kohl Center. Above: The Badgers align for the National Anthem. Near right: Bucky leads UW onto the ice. Far right: Head coach of River Falls, WI, Julie Sasner. Bottom left: Olympian Karyn Bye acknowledges the crowd. Bottom middle: Olympian Cammi Granato drops the cere-



The University of Wisconsin celebrated opening night in grand style as 3,892 Badger fans watched the UW face Minnesota-Duluth. The crowd was the second largest in the history of women's college ice hockey.



Inaugural Season  
1999 • 2000





# 1999-2000 Wisconsin Women's Hockey



**Kerry Weiland (L), Jackie MacMillan (C) and Michelle Sikich have their sights set on the Badgers' inaugural season.**

## Table of Contents

Quick Facts.....	1
Head Coach Julie Sasner.....	2
Assistant Coaches.....	3
Support Staff.....	4
Q & A With Coach Sasner.....	5
Season Preview.....	7
1999-2000 Roster.....	8
Meet the Badger Skaters.....	9
Wisconsin Men's Hockey Tradition.....	15
UW Women's Club Hockey History.....	15
The WCHA-Women's League.....	16
Opponents.....	18
Facilities.....	23
Media Information.....	24
The Wisconsin Experience.....	Centerfold
1999-2000 Schedule.....	Back Cover

## Hockey Websites

Wisconsin	<a href="http://www.wisc.edu/ath/sport/whky">www.wisc.edu/ath/sport/whky</a>
Bemidji State	<a href="http://info.bemidji.msus.edu/Sports/">info.bemidji.msus.edu/Sports/</a>
Minnesota	<a href="http://www.gophersports.com/">www.gophersports.com/</a>
Minnesota-Duluth	<a href="http://www.d.umn.edu/athletic/">www.d.umn.edu/athletic/</a>
MSU, Mankato	<a href="http://www.mankato.msus.edu/dept/athletics/">www.mankato.msus.edu/dept/athletics/</a>
Ohio State	<a href="http://www.ohiostatebuckeyes.com/">www.ohiostatebuckeyes.com/</a>
St. Cloud State	<a href="http://www.stcloud.msus.edu/~sports/sports.html">www.stcloud.msus.edu/~sports/sports.html</a>
WCHA	<a href="http://www.wcha.com">www.wcha.com</a>
ECAC	<a href="http://hockey.ecac.com">hockey.ecac.com</a>
MIAC	<a href="http://www.stkate.edu/miac/whockey.html">www.stkate.edu/miac/whockey.html</a>
U.S. College Hockey Online	<a href="http://www.uscollegehockey.com">www.uscollegehockey.com</a>
College Hockey Statistics	<a href="http://www.collegehockeystats.com">www.collegehockeystats.com</a>
USA Today	<a href="http://www.usatoday.com/sports/hockey/shc/shcd.htm">www.usatoday.com/sports/hockey/shc/shcd.htm</a>
The Women's Hockey Web	<a href="http://www.whockey.com/">www.whockey.com/</a>
Women's College Hockey	<a href="http://www.cs.utoronto.ca/~andria/univ/usa/">www.cs.utoronto.ca/~andria/univ/usa/</a>
USA Hockey	<a href="http://www.usahockey.com/">www.usahockey.com/</a>

## Quick Facts

Location:	Madison, Wisconsin
Population:	200,814
Founded:	1848
Enrollment:	40,196
Nickname:	Badgers
Colors:	Cardinal and White
Conference:	WCHA, Big Ten
Division:	NCAA I
Chancellor:	David W. Ward
Athletic Board Chair:	Professor James T. Hoyt
Athletic Director:	Pat Richter
Associate Athletic Director—	Women's Hockey: Mike Moss
Women's Sports Information Director:	Tamara J. Flarup
Office:	(608) 263-5502
Home:	(608) 238-3650
Women's Hockey Contact:	Paul Capobianco
Office:	(608) 263-1983
Home:	(608) 233-3106
FAX:	(608) 265-8051
Email:	phc@athletics.wisc.edu
Head Coach:	Julie Sasner (Harvard, 1988)
Career Record:	53-61-6 (6 years)
School Record:	First year
Office:	(608) 262-0101
FAX:	(608) 265-3160
Email:	badger.hockey@athletics.wisc.edu
Assistant Coaches:	Trina Bourget (New Hampshire, 1984)
Office Phone:	(608) 265-3128
Email:	tlb@athletics.wisc.edu
Tracey Cornell (Cornell, 1997)	
Office Phone:	(608) 265-3127
Email:	tsc@athletics.wisc.edu
Mike Dibble (Wisconsin, 1978)	
Home Facility (seating capacity):	Dane County Coliseum (8,100)
Press Box:	(608) 265-2666
Kohl Center (14,385)	
Press Box:	(608) 265-4336
Mailing Address:	Wisconsin Women's Hockey
	1440 Monroe Street
	Madison, WI 53711
Wisconsin Athletics Online:	<a href="http://www.wisc.edu/ath/">www.wisc.edu/ath/</a>

**On the Cover:** Six of the pioneers for Wisconsin women's ice hockey back-grounded by archival photos of the UW Hockey Club. Left to Right: Kendra Antony, Jackie MacMillan, Kerry Weiland, Sis Paulsen, Chanda Gunn, Kelly Kegley; Photography by Cris Comello, Radlund Photography.

**Credits:** Written by Paul Capobianco, Assistant Women's Sports Information Director. Edited by Tam Flarup, Director, Sports Information, and Diane Nordstrom, Associate Director, Women's Sports Information. Design by Barry Carlsen, University Publications. Photos by Jay Salvo, Greg Anderson and Dave Stluka.



# Head Coach Julie Sasner



Julie Sasner was named the first inter-collegiate women's hockey coach at the University of Wisconsin on July 9, 1998. Sasner was the perfect choice to lay the groundwork and envision the bright future for UW's newest women's program.

Active in both the playing and coaching ranks of USA Hockey, Sasner was a member of the first U.S. Women's National Team that won the silver medal at the 1990 World Championship.

In addition to being a player, Sasner has had numerous coaching outings for the organization. She headed the 1998 and 1999 Women's 17-and-18 National Camp at Lake Placid, N.Y., and was an associate coach for the U.S. National Team that competed at the 1999 International Ice Hockey Federation Women's World Championship. Sasner was the head coach of the U.S. Women's Select Team that competed in the 1998 Three Nations Cup in Finland, and was one of the coaches of the 1995 USA Hockey Junior National Developmental Camp. In 1995, she served as an assistant coach for the U.S. National Junior Team and the U.S. Women's Select Team that competed in Finland. Sasner earned her first U.S. head coaching position in 1996, leading the U.S. Women's National Team to a silver medal at the Pacific Women's Hockey Championship in Vancouver, British Columbia. She also served as head coach of the "Red" team at the 1997 U.S. Women's National Festival in Lake Placid.

Sasner was the head coach at Cornell University for five years before joining the Badgers. In her stretch behind the bench of the Big Red, she posted a 26-22-2 Ivy League record, 40-39-6 Eastern College Athletic Conference mark, and has a 53-61-6 career record.

Sasner's tenure included a 15-8-3 overall record in 1997-98, and a 16-7-2 record in 1995-96. She led her 1995-96 team to its first Ivy League title since 1990 with an 8-1-1 mark. Along with the league title,



Sasner's skaters also qualified for the ECAC tournament for the first time in Cornell history losing in the first round. Sasner was named the 1995 Coach of the Year by the American Women's Hockey Coaches Association.

Sasner got her start in coaching as the women's soccer coach at the California State University-Hayward from 1991-92, prior to accepting her position at Cornell.

While at Hayward, Sasner was named the 1991 NCAA Division II West Region and Northern California Athletic Conference Coach of the Year. She posted an 11-26-1 record in her two seasons at Hayward and was a member of the NCAA West Region Ranking Committee and the NCAA Soccer Rules Committee.

The Durham, N.H., native played ice hockey and soccer four years at Harvard University graduating in 1988 with a degree in social anthropology. She earned her master's degree in counseling from San Francisco State University in 1992. A four-time all-Ivy League hockey selection for the Crimson, Sasner was named the 1988 Ivy League Player of the Year leading her team to the league title. She was also named the 1985 Ivy League Rookie of the Year. In her four years at Harvard, she scored 51 career points in Ivy League games with 32 goals and 19 assists. She also earned Ivy all-league honors in soccer for two seasons. Sasner stayed at Harvard following her graduation and served as an assistant coach in ice hockey, soccer and softball from 1988-90.

Active in the American Hockey Coaches Association, Sasner is the only woman on the Board of Governors and completed her two-year term as president of the American Women's Hockey Coaches Association in 1998. She is on the national championship selection committee for the American Women's College Hockey Alliance and served on the USA Hockey Girls/Women Section Committee.

**"Initiating the new hockey program has been exciting and challenging. It's a special opportunity to chart the course for the women's varsity team from the very beginning. The University has committed tremendous resources to all aspects of the program—from equipment expenditures to academic tutoring services for players.**

**It has been very useful to have over a full year to put the structure in place before the team begins competing. We will work hard to be competitive on the ice as quickly as possible."**

## Sasner's Coaching Record

Year	University	Record	Pct.	Conference	Record	Place	Conference	Record	Place
1993-94	Cornell	2-16-0	.111	ECAC	1-10-0	11th	Ivy League	2-8-0	5th
1994-95	Cornell	7-15-0	.304	ECAC	5-9-0	T-10th	Ivy League	4-6-0	4th
1995-96	Cornell	16-7-2	.680	ECAC	9-5-2	5th	Ivy League	8-1-1	1st
1996-97	Cornell	13-15-1	.466	ECAC	11-10-1	7th	Ivy League	6-4-0	2nd
1997-98	Cornell	15-8-3	.635	ECAC	14-5-3	3rd	Ivy League	6-3-1	3rd
<b>5 years</b>		<b>53-61-6</b>	<b>.467</b>		<b>40-39-6</b>			<b>26-22-2</b>	



## Assistant Coaches



### Trina Bourget

Trina Bourget begins her first season as assistant coach of the Wisconsin women's hockey program. Bourget arrives in Madison after a successful two-year stay as head coach of Division III Sacred Heart University. Named the 1998-99 Eastern Collegiate Athletic Conference/Koho Coach of the Year, she led the Pioneers, in their third year of existence, to a No. 8 national ranking. Their 15-4-3 record during the 1998-99 season, good for second in the ECAC, earned Bourget American Women's Hockey Coaches Association Coach of the Year Runner-up honors.

Before her tenure at Sacred Heart, Bourget served as assistant coach of Lincoln Sudbury Regional High School girl's hockey team in Sudbury, Mass., and held a similar position with the field hockey team at Shrewsbury High School in Shrewsbury, Mass. She also spent time as an assistant coach of women's hockey at Holy Cross College located in Worcester, Mass.

A 1994 graduate of the University of New Hampshire, Bourget owns a bachelor of science degree in family and consumer studies, and is currently working on a master's degree in business administration from Sacred Heart University.

The Trumbull, Conn., native competed as a forward and defenseman for the University of New Hampshire women's hockey team where she helped the Wildcats to the ECAC Division I Championship in 1991, 1992 and 1993. Bourget is also an asset having spent over 11 years in the official's stripes. She received her "B" Pool license from the International Ice Hockey Federation and achieved the status of a USA Hockey Level 4 official.



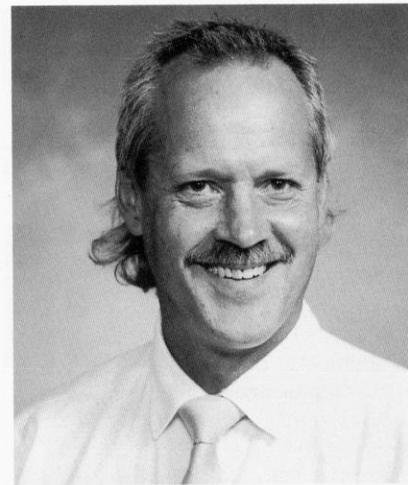
### Tracey Cornell

Ashton, Ontario, native Tracey Cornell comes to Madison after spending the previous year as head girl's hockey coach at Cushing Academy in Ashburnham, Mass. Cornell led Cushing Academy to a 24-4-2 mark, the most successful season in the history of the program. Her team captured second during the regular season and advanced to the NEPSAC Championship. Cornell has also taught at numerous hockey camps throughout her career, including the Cornell University Summer Sports School assisting current Wisconsin women's hockey head coach Julie Sasner for four years.

Cornell's playing experiences include four years at Cornell University, as well as one year as a professional in Switzerland for the SC Reinach Lions. While at Cornell, she co-captained the hockey program her senior season earning Academic All-Ivy honors both her junior and senior years. Cornell helped Big Red to the Ivy League hockey title during the 1995-96 season and served as assistant captain during the title run. The one-time Cornell Rookie of the Year also earned team honors as most inspirational player during her sophomore and senior campaigns.

Her stay with the SC Reinach Lions, while short, was successful. The Lions placed second overall in the top Swiss hockey league and were crowned Zurich Cup Tournament Champions during her 1997-98 season.

Cornell earned her bachelor of science degree in marine ecology from Cornell University in 1997. In addition to her time with the hockey program, Cornell played forward for a year with the Big Red women's soccer team.



### Mike Dibble

Serving as Wisconsin's volunteer goaltending coach is former Badger-great Mike Dibble. Dibble brings extensive coaching and playing experience to the women's hockey program.

He began his time behind the bench as architect of Sun Prairie High School's hockey program. While serving in that capacity from 1980-86, he was also the coaching program director for the the state of Wisconsin's WAHA. In 1987, he became the Central District coaching director, a position he held until 1992.

Dibble spent time coaching at the national level as well. A part of the original staff of USA Hockey's National Goaltender Camp, he coached the 1986 U.S. National Midget Team. Most recently he served as coach of the 1994 U.S. National 17-Selects.

As a player, Dibble's credentials are impeccable. The former men's hockey standout was the team's 1975 MVP and helped the squad to the 1977 NCAA Championship. A 1974 draft pick of the New York Islanders, the Minneapolis, Minn., native was the alternate goalie for the 1980 U.S. Olympic Team.

Dibble ranks on numerous Badger top-10 goaltender lists from his playing days. Minding the nets under Bob Johnson from 1974-78, he ranks third in career saves per game at 30.8, fourth in career saves with 2,895, fourth in career games played with 94, fourth in career minutes played with 5,557 and fifth with 50 career victories. He also has the ninth-best single-season winning percentage when he went 14-5-1 (.725) during the 1976-77 season, and is tied for seventh in single-game saves for his 53-save performance on Feb. 20, 1976 in a 4-3 win at Michigan.

When not on the ice, Dibble serves as a Madison fire fighter.



## Support Staff



**Administrative Assistant  
Carol Pope**



Carol Pope serves the Wisconsin hockey program as an administrative assistant.

A member of the UW-Madison Ice Hockey Club in 1990-91 and 1993-94, she is a 1989 graduate of Wisconsin with a bachelor's degree in anthropology. The Madison, Wis., native served as assistant commissioner of the Badger State Games Female Hockey Division from 1996-99.

She is a founding member of the Madison Lightning Women's Ice Hockey Club and is part of its ice-buy committee. Pope managed the Madison Edge National Team in April of 1996 and was a team representative on the executive board for Wisconsin and Girls and Womens Hockey during 1996 and 1997.

Pope earned her masters of science degree in cultural anthropology in 1995 from UW-Milwaukee. She has two children with Kenneth Karstens, three-year-old Alicia and two-year-old Barrett.

**Program Assistant  
Sharon Eley**



Sharon Eley joined the staff of the women's hockey program after working in the Wisconsin Athletic Administrative offices for a year and a half.

Eley was instrumental in opening the Athletic Department Welcome Center located on the first floor of Camp Randall Stadium while in her administrative role. The Madison, Wis., native spent 25 years as a Northwest Airlines flight attendant based out of Seattle, Wash., and an administrative assistant at the Orange County YWCA in Fullerton, Calif. Eley returned to Madison in December of 1997 to duties for the Badgers.

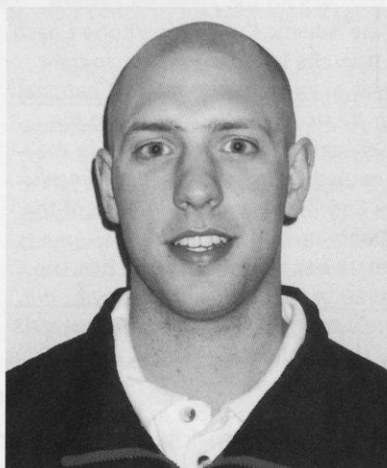
Eley earned her associate of arts degree from Fullerton College in Fullerton, Calif., after graduating from Monona Grove (WI) High School.

Eley is married to husband Dennis and has two grown children.

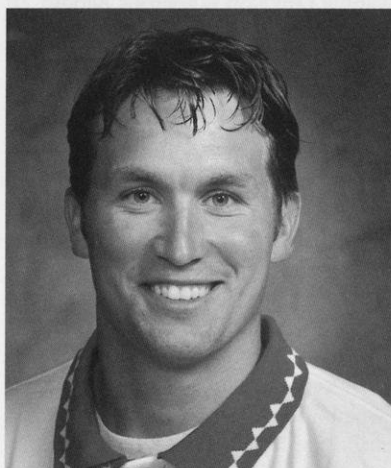
**Athletic Trainer  
Laura Walluk**



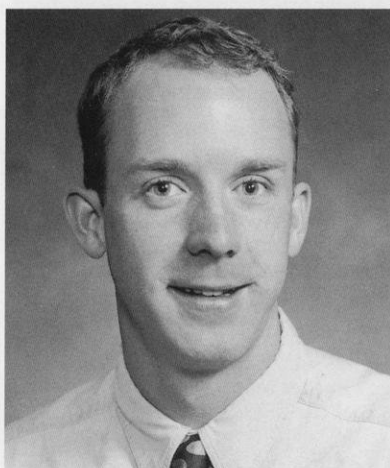
**Student Manager  
Paul Hickman**



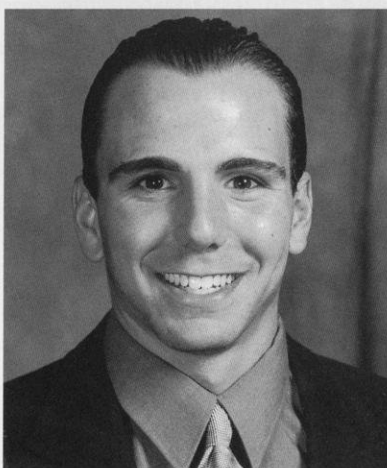
**Video Coordinator  
Mark King**



**Sports Information  
Paul Capobianco**



**Strength Coach  
Paul Goodman**





## Q&A with Coach Julie Sasner

### What can the Wisconsin fans expect to see when the Badgers hit the ice this season?

The fans can expect to see a team that is feisty and competitive. One that takes great care in skating hard and passing the puck well. A team that is going to step on the ice and do everything it can to win every game it plays. We want to be as fit as we can possibly be and have been emphasizing skill development. We plan to be a skating team that moves the puck well and makes good decisions. We have stressed our fitness level and team discipline.

### What goals do you and your team have for the first season?

Right now our goal is to make sure we improve every single practice, every single game, every single week. We have a short time to pull our team together for our first game with Minnesota-Duluth. After the first weekend, we will be able to sit down and get a gauge on where we are at, what our starting point is and what are some realistic goals for the team in terms of outcomes. Right now we are completely focused on what our performance goals are going to be. How we want to see ourselves playing and how we want to see our team coming together.

### Women's college hockey is established in the East. It is relatively new to the Midwest with most of the teams starting up within the last three years. Can the midwestern teams compete?

The eastern teams have tradition on their sides, but the midwestern schools are committing tremendous resources to their programs. Minnesota is a great example of a team that has stepped into women's college hockey and competed with the established teams. Some of the teams in the Midwest will compete immediately with the best teams in the East.

Part of being competitive is attracting top student-athletes to the programs. Our team, and other teams in the league, have been able to attract players that could play at any school. With all the resources and support given to women's hockey in this league, the teams will be able to attract the top student-athletes in the country and that it is going to make the league competitive now and in the future.

### Who are the top teams in the nation?

Harvard. They are the returning champ. UNH is a team that has a lot of depth.

They have always had a strong program. They are not just a one line team, but are three or four lines deep. Brown University always has a tough team. Minnesota finished third last year in the women's national tournament so they will be a force.

### This is Wisconsin's first year of women's hockey. What is your vision for this program?

Our plan is to compete for a national championship within five years. We want to build a program that will consistently compete with the very top teams in the nation year after year. Right now we are in phase I, having gotten our first recruiting class and staff together, and working hard on getting a successful second recruiting class. Every year we want our team to improve. We are trying to attract the best student-athletes to our program, and we want the players already in our program to become better every year.

**Our plan is to compete for a national championship within five years. We want to build a program that will consistently compete with the very top teams in the nation year after year. "**

**Coach Julie Sasner**

### You said you are in phase I of your plan for the program with your first recruiting class and your staff. What do you like about the Badgers' first group of student-athletes?

Michelle Sikich has the most college experience, and is the only player to be road-tested. She is a proven goal scorer and an excellent skater. She is versatile and can play both defense and forward. We have two goaltenders on our team in Jackie MacMillan and Chanda Gunn that were among the two most highly recruited student-athletes in the country so we expect to be very strong in goal. With Kerry Weiland, Sis Paulsen and Roberta Shufeldt playing defense, we are building from the net out. Those players will see a lot of playing time and will form the core of the team. Kelly Kegley and Kendra Antony,



*Kendra Antony scored the first goal in Badger history. A power-play goal, it came at 2:25 of the first period in Wisconsin's inaugural game against Minnesota-Duluth.*

two forwards who are known for their game sense, their ability to get pucks out of the corner and their unselfish team play will be looked at to provide offensive punch.

### The other step in phase I is the formation of your staff. Talk a little about them.

We are fortunate to have someone of Trina Bourget's experience and background on our staff. She comes from building a program herself at Sacred Heart. She was a player in a very successful UNH program, having won a national championship her freshman year. She is also a certified official so understands that aspect of the game. She is one of the most organized, diligent and determined individuals I have met. We feel fortunate to have her on our staff and coordinating our recruiting efforts.

Tracey Cornell is a former player of mine at Cornell. Tracey played in Switzerland for a year as a pro hockey player and has had significant experience leading the Cushing Academy girl's hockey team. She led the team to a successful season last year and also worked as a teacher at the school. She is close enough to being a player herself that she relates well with the student-athletes. She is organizing our efforts to reach out to the community and is helping girls and women in the state of Wisconsin get the opportunity to play hockey. One of our goals here is to develop girl's high school hockey in Wisconsin. She will be working





**Jackie MacMillan controls one of 50 saves she made against Minnesota-Duluth to set a personal best on opening night. MacMillan, the Badgers' first recruit, practiced with the Wisconsin men's team last year.**

We are expecting to get leadership from everybody. This year we decided to rotate the captain's "C". We feel it is important for everyone on the team to have an understanding of what it means to be a captain and how important it is to be a good follower. It is easier to have an appreciation for that when you have done it yourself and been in a leadership role. It's important to know the privileges and responsibilities that go along with being a captain.

Our team is unique in this first year in that we have some older players such as Natascha Sherman, Theresa Hillamen, Abbey Olson and Roberta

Shufeldt, who have college experience. They have been college students and have either played in other programs or on the UW Club team. They are experienced, mature college players who also do very well in school. It is very important in our first year to get off on the right foot academically as well as athletically. We look to those people for leadership, and our core of recruited athletes for leadership on the ice, during games and at practices.

**One of the things you have talked about since taking the reigns of this program is your desire to help the growth of women's ice hockey...especially in the state of Wisconsin. How do you plan to go about doing that?**

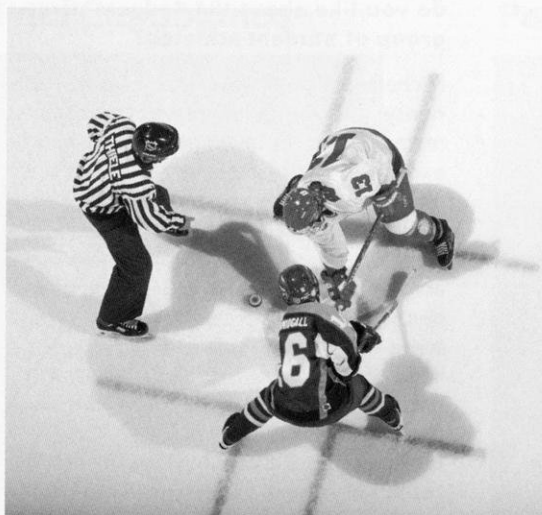
The first thing we can do is increase the visibility of women who play hockey and succeed in many other things in life. A message that we relay to parents is that hockey is for girls. Beyond that, we are

organizing one clinic a month at our arena of various age groups. We are going outside Madison, playing a game in Middleton, two in Eau Claire and one in Fond du Lac against the U.S. National Team. We want to expose our players and our program to people around the state. People catch on quickly to the fact that women are earning scholarships to go to the university and to be able to further their education and their career and to play hockey as well. It is a growing process and will take time. Right now we want to make sure that the people who are already active in hockey: promoting hockey, playing hockey, officiating hockey, writing about hockey, have more to write about and have the recognition that they may not have received.

**The men's ice hockey program has helped the women's program get off the ground. How have they helped?**

One of the unique things about our program is that we are closely connected to the men's program here on campus. The men's players have helped in hosting the women's recruits, particularly before we had a team. The men's staff, starting with coach Jeff Sauer right through Mark Johnson, Pat Ford, Nancy Olson, Rob Malnory, and athletic trainer Mike Johnson, have helped us set up our program at the highest possible level. We came in with a high level of resources and with a great deal of support and backing from the men's program. Not only is it a great working relationship, not only have they helped us get off to a great start, but it makes it a lot more fun to come to work. It is a friendly, family-like environment for our players and coaches. It is great to sit down and talk hockey with

coach Sauer. Jackie MacMillan, who practiced with the men's team last year, certainly learned a lot from coach Bill Howard as well as Graham Melanson and Jake Soper, two goaltenders on the men's team. Jackie was an ambassador for our team last year and has paved the way for a great relationship between the men's and women's programs.



**Eau Claire, Wis., native Sis Paulsen battles for a faceoff. Paulsen is the Badgers' first recruit from Wisconsin.**

closely with youth organizations to accomplish this. She is also working with our strength and conditioning coaches for our off-ice workouts.

Mike Dibble is a great find for us. He will work with our goaltenders as our volunteer coach. He is a former Badger who knows what it means to win a NCAA Championship. He has achieved at the highest level of college hockey and has represented the United States in international events as well. We are very fortunate to have someone of his caliber and experience. While in high school, he was coached by one of the greatest coaches in all of hockey, Dave Peterson. Peterson worked for USA Hockey and led the men's Olympic team in 1988 and 1992.

Carol Pope, our administrative assistant, played hockey with the UW Club program. She has been a strong link between our program and the UW Club. First of all to help us find players, and then working with the club to establish a loyal fan base. She has worked with the Badger State Games as the hockey commissioner, and she knows and plays in the women's town league. She is just a hockey nut like the rest of us.

Sharon Eley, our program assistant, is the mom of the program. She takes care of everybody. She is the glue that keeps us all together and also keeps the office organized. The contacts she has within the university and the community have been instrumental in helping us to a successful start.

**Your 24-member roster boasts 18 freshman and is therefore extremely young. Who is going to lead this team?**



# Season Outlook

**H**ead coach Julie Sasner spent the past year preparing for the University of Wisconsin's entrance into the world of intercollegiate women's ice hockey. Countless miles on the road finding the first women to put on the Wisconsin sweater will finally pay off on Friday, Oct. 8 when the University of Minnesota-Duluth comes to the Kohl Center.

Sasner has laid the groundwork for a successful program by bringing talent in from Alaska, California, Canada, Michigan, Minnesota and of course, Wisconsin. The inaugural team will feature Jackie MacMillan, Sasner's first recruit, who already has a year of seasoning having spent her freshman year learning Wisconsin hockey tradition at men's practices. The team will boast Michelle Sikich, a transfer from Minnesota State University, Mankato and the nation's most dangerous penalty killer. Experienced defenseman Roberta Shufeldt played two years at New Hampshire and will steady the blueline. Add recruits Kendra Antony, Chanda Gunn, Kelly Kegley, Sis Paulsen and Kerry Weiland to the class and the roster begins to form.

To fill out the bench, Sasner will look to various other sources. Bridget Buchholz, Leslie Toner and Jennifer Neary each spent last year at the UW and came to Badger Country with the intention of lacing up their skates for the 1999-2000 season. The Wisconsin Club Hockey program is also well-represented with Annie Chamberlain, Janelle Johnson, Theresa Hilleman, Abbey Olson and Natascha Sherman skating for the varsity. The remaining eight players walked-on to the squad, including Jennifer Mead, Melanie Schmitt, Roseann Meyer, Gretchen Anderson, Sarah Repp, Christina Gehrke, Liz Jankowski and Julia Ortenzio.

Sasner did not just recruit student-athletes, she also put together a top-notch coaching staff. Trina Bourget, the 1998-99 Division III ECAC Coach of the Year, led Sacred Heart University to a 15-4-3 mark and was highly sought after as a head coach at other Division I institutions. Bourget also brings over 11 years of officiating expertise and a great understanding of the rules of the game. Tracey Cornell, one of Sasner's former players at Cornell University, coached Cushing Academy in Ashburnham, Mass., to a 24-4-2 record last year. The record was the best in school history. Cornell also played professional hockey in the top Swiss hockey league for the SC Reinach Lions. Mike Dibble, the former-Badger goaltending great, will help the Badger women's goal-

## SASNER'S COACHING PHILOSOPHY

**"We value the intellectual, athletic, and personal development of student-athletes. Players and coaches will make a strong commitment to develop the current team with respect to the skills, tactics, physical and mental capabilities required to compete at the highest level. In addition, we want to attract the finest prospective student-athletes to continue building on the strong tradition of hockey we have at the University of Wisconsin."**



**Chanda Gunn is part of the Badgers' talented goaltending trio. Jackie MacMillan and Jennifer Neary make up the rest of the triumvirate.**

tenders backstop the defense as a volunteer assistant.

Positions for the Badgers will sort out in practice, though the three goaltenders are known. Jackie MacMillan, Chanda Gunn and Jennifer Neary will patrol the crease. MacMillan and Gunn are expected to battle for playing time and form a solid tandem, as both arrived in Madison with extensive national experience. MacMillan competed at two USA Hockey Women's Festivals and led the Minnesota Thoroughbreds to three national finals appearances. Gunn's Team California knocked the Thoroughbreds out of the 1998 national tournament in the semifinals.

The Badgers begin their own tradition as part of the newly-formed Western

Collegiate Hockey Association-Women's League. Established in the spring of 1999, the conference will include the University of Minnesota, University of Minnesota-Duluth, Bemidji State University, Minnesota State University, Mankato, St. Cloud State, Ohio State University and the University of Wisconsin.

Sasner knows that with a new program comes growing pains and expects plenty of obstacles along the path. Established powers like Harvard, Brown and New Hampshire have been around women's hockey for years. The University of Minnesota, a top-five program from the first day, may be more the kind of model Sasner is looking at. The Gophers have a short history, but success came immediately. Women's college hockey continues to expand making the kind of start Minnesota had in its program more difficult.

The Badgers will settle into their home, the Dane County Coliseum, after an opening weekend at the UW's Kohl Center. The two buildings will not be their only homes, however. The UW hosts Harvard at the Capitol Ice Arena in Middleton, Wis., Nov. 5. They host Bemidji State at Hobbs Arena in Eau Claire, Wis., Nov. 13 and 14, and they also travel to Fond du Lac, Wis., for an exhibition game against the U.S. National Team on Jan. 8.

More than a year's worth of preparation will culminate in the puck dropping Friday, Oct. 8. Coached by Canadian National Team coach Shannon Miller, the Minnesota-Duluth Bulldogs come to Madison for a two-game series. Both contests for the Friday-Saturday series are set for 7:05 p.m. at the Kohl Center. The games not only mark the Badgers entrance into women's hockey, but they mark the first games for the WCHA-Women's League.



# 1999-2000 Wisconsin Roster

## Numerical

No.	Name	Yr.	Pos.	Ht.	Hometown/High School/Last Team
2	Jennifer Mead	Fr.	D	5-4	Eau Claire, WI/Regis/Mack Ramblers
4	Annie Chamberlain	So./Fr.	F/D	5-3	Wayzata, MN/Hopkins/UW Club
5	Abbey Olson	Jr./So.	F/D	5-2	Mound, MN/Mound-Westonka/UW Club
6	Roberta Shufeldt	Sr./Jr.	D	5-3	Romulus, MI/Woodhaven/New Hampshire/O'Leary Hawks
7	Kelly Kegley	Fr.	F	5-4	Inver Grove Heights, MN/South St. Paul
8	Janelle Johnson	So./Fr.	F/D	5-6	Apple Valley, MN/Apple Valley
9	Bridget Buchholz	So./Fr.	F	5-8	Waupun, WI/Waupun/Wisconsin Challengers
10	Michelle Sikich	So.	D	5-5	Apple Valley, MN/Apple Valley/MSU, Mankato
11	Theresa Hilleman	Sr.	F/D	5-7	Richland Center, WI/Richland Center/Madison Lightning
12	Gretchen Anderson	Fr.	F/D	5-9	Minneapolis, MN/South/Minneapolis Novas
13	Sis Paulsen	Fr.	D	5-3	Eau Claire, WI/Eau Claire North
14	Kerry Weiland	Fr.	D	5-4	Palmer, AK/Palmer
15	Melanie Schmitt	Fr.	F	5-6	Sheboygan, WI/Sheboygan North
17	Roseann Meyer	Fr.	D	5-10	Portsmouth, RI/Portsmouth
20	Natascha Sherman	Sr./Jr.	F	5-0	Seattle, WA/Northfield Mount Hermon (MA)/UW Club
21	Chanda Gunn	Fr.	G	5-8	Huntington Beach, CA/Taft (CT)
22	Sarah Repp	Fr.	F	5-3	Antigo, WI/Antigo
23	Leslie Toner	So./Fr.	F	5-7	Wausau, WI/Wausau West/Wisconsin Challengers
24	Christina Gehrke	Gr./Sr.	F/D	5-5	Fennimore, WI/Kingwood (TX)/M.I.T.
25	Liz Jankowski	Fr.	F	5-6	Maple Grove, MN/Maple Grove
26	Kendra Antony	Fr.	F	5-2	Yorkton, SK/Yorkton Regional/Saltcoats Prairie Fire
27	Julia Ortenzio	Fr.	F	5-5	Eden Prairie, MN/Eden Prairie
29	Jackie MacMillan	So./Fr.	G	5-4	Buffalo, MN/Buffalo/Minnesota Thoroughbreds
30	Jennifer Neary	So./Fr.	G	5-7	Dallas, TX/Phillips Exeter Academy (NH)/Wisconsin Challengers

## Staff

HEAD COACH  
Julie Sasner

ASSISTANT COACHES  
Trina Bourget  
Tracey Cornell  
Mike Dibble

ADMINISTRATIVE  
ASSISTANT  
Carol Pope

PROGRAM ASSISTANT  
Sharon Eley

ATHLETIC TRAINERS  
Laura Walluk  
Matt Kleinheinz (Student)

STUDENT MANAGER  
Paul Hickman

STRENGTH COACH  
Paul Goodman

VIDEO COORDINATOR  
Mark King

SPORTS INFORMATION  
Paul Capobianco

## Pronunciation

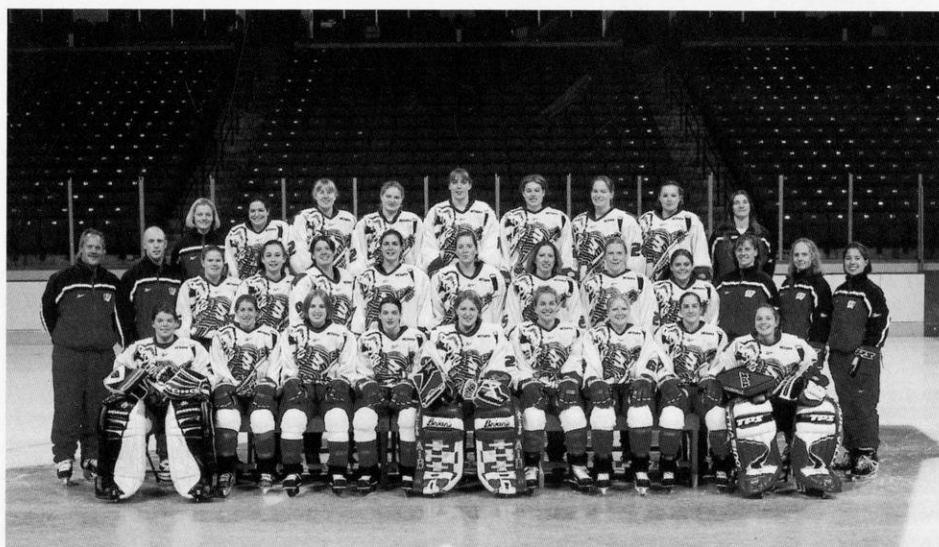
6	Roberta SHOE-felt	14	Kerry WHY-lind
9	Bridget BUCK-holes	17	Roseann MY-er
10	Michelle SI-kich	21	SHAN-duh Gunn
11	Theresa HILL-a-min	23	Leslie TONE-er
		24	Christina GER-key
		27	Julia Or-TEN-zee-o
		30	Jennifer NEAR-ee

## Eligibility

Freshmen: 18  
Sophomores: 2  
Juniors: 2  
Seniors: 2

## Alphabetical

No.	Name
12	Gretchen Anderson
26	Kendra Antony
9	Bridget Buchholz
4	Annie Chamberlain
24	Christina Gehrke
21	Chanda Gunn
11	Theresa Hilleman
25	Liz Jankowski
8	Janelle Johnson
7	Kelly Kegley
29	Jackie MacMillan
2	Jennifer Mead
17	Roseann Meyer
30	Jennifer Neary
5	Abbey Olson
27	Julia Ortenzio
13	Sis Paulsen
22	Sarah Repp
15	Melanie Schmitt
20	Natascha Sherman
6	Roberta Shufeldt
10	Michelle Sikich
23	Leslie Toner
14	Kerry Weiland



First row (L to R): Jennifer Neary, Kelly Kegley, Kendra Antony, Kerry Weiland, Jackie MacMillan, Michelle Sikich, Roberta Shufeldt, Sis Paulsen, Chanda Gunn. Second row: Volunteer Assistant Coach Mike Dibble, Student Manager Paul Hickman, Melanie Schmitt, Janelle Johnson, Bridget Buchholz, Roseann Meyer, Gretchen Anderson, Liz Jankowski, Leslie Toner, Annie Chamberlain, Head Coach Julie Sasner, Assistant Coach Trina Bourget, Assistant Coach Tracey Cornell. Back row: Athletic Trainer Laure Walluk, Natascha Sherman, Sarah Repp, Jennifer Mead, Theresa Hilleman, Julia Ortenzio, Christina Gehrke, Abbey Olson, Administrative Assistant Carol Pope.



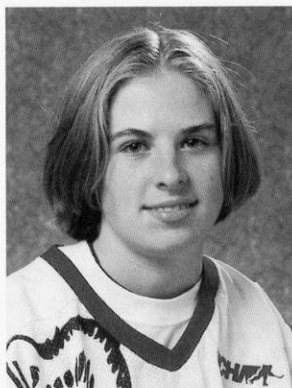
# Meet the Badgers



## 12 Gretchen Anderson

**Freshman • 5-9**  
**Forward/Defense**  
**Minneapolis, MN/South**

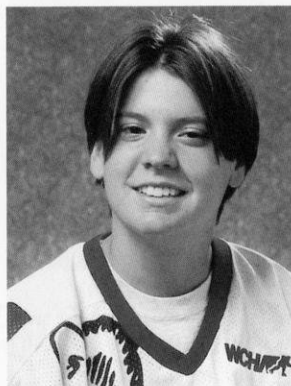
**Prep:** Four-year hockey letterwinner for Minneapolis South High School ... three-time team captain ... tallied 31 points earning all-state honorable mention honors as a senior ... had 34 points as an all-state player her junior year ... team finished second in the region both years ... put up 50 points her sophomore year to help team to conference championship ... earned all-metro honorable mention for her efforts ... helped team to conference title as a freshman with 29 points ... four-time letterwinner in softball ... named all-city as a junior and senior ... team won city championship her sophomore season ... member of the National Honor Society and a National Merit Commended Scholar ... **Personal:** Parents are Elizabeth Palmen and John Anderson ... born 4-27-81 ... major is undeclared



## 26 Kendra Antony

**Freshman • 5-2**  
**Forward**  
**Yorkton, Saskatchewan/Yorkton Regional**

**Prep:** Had 36 goals, 27 assists in 42 games for the Saltcoats Prairie Fire of the Regina Hockey League in 1998-99 ... named 1998 MVP of the Western Canadian Shield, the Senior B final game ... helped Prairie Fire to two provincial championships ... served as assistant captain of the Saskatchewan Provincial Team ... the team finished fourth in the 1999 Canada Winter Games ... played on various boys teams earning her squads' Most Sportsmanlike Player Award each year from 1989-95 ... an all-around athlete ... named the 1998 MVP for the Yorkton Regional soccer team ... 1997 Rookie of the Year for Yorkton Regional basketball ... also played softball ... won Yorkton Regional's Female Athlete of the Year award as a senior ... made honor roll throughout high school ... **Personal:** Parents are Marilyn and Harry Antony ... born 2-16-81 ... major is undeclared

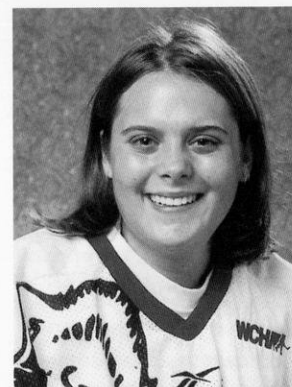


## 9 Bridget Buchholz

**Sophomore/Freshman • 5-8**  
**Forward**  
**Waupun, WI/Waupun**

**Prep:** Participant at the 1998 Olympic Development Camp ... played her hockey with the Wisconsin Challengers ... made seven trips to nationals on the seven-time regional championship team ... made three trips to internationals, twice with the Challengers, once with Assabet Valley ... competed on boy's hockey teams for 13 years ... a three-time all-conference softball and tennis player at Waupun ... had fourth and sixth-place finishes at state tennis tournament in doubles ... twice named all-state in doubles ... captained softball team during senior year as a catcher ... club softball team finished seventh at the National Softball Association National Championship in 1995 ... same team won NSA and American Softball Association state title ... won NSA regional, runner-up at ASA regional ... coached youth hockey,

ages 3-8, for five years ... Senior Class President ... member of the National Honor Society ... chief editor of the school newspaper and yearbook ... won school's Wooden Shoe awarded to the best all-around junior student ... **Personal:** Parents are Pamela and William Buchholz ... sister Emily plays hockey for Minnesota ... born 7-9-80 ... major is classics



## 4 Annie Chamberlain

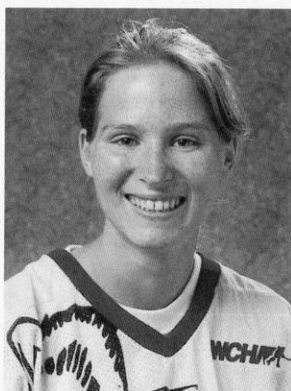
**Sophomore/Freshman • 5-3**  
**Forward**  
**Wayzata, MN/Hopkins**

Competed with the UW Women's Ice Hockey Club ... **Prep:** Played three years on Hopkins hockey team ... won Coaches' Award as a senior and Most Improved Defensive Player as a junior ... strong skater ... spent 10 years on the ice as a figure skater ... employed at the Minnetonka Ice Arena ... member of the National Honor Society ... **Personal:** Parents are Sarah and Rick Chamberlain ... born 1-2-80 ... major is undeclared

## Players By State/Province

Minnesota .....	9
Wisconsin .....	8
Alaska .....	1
California.....	1
Michigan .....	1
Rhode Island .....	1
Texas.....	1
Washington .....	1
Saskatchewan .....	1





## 24 Christina Gehrke

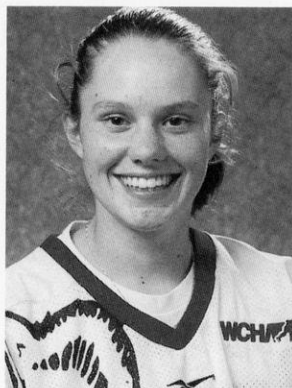
**Graduate/Senior • 5-5**

**Forward**

**Fennimore, WI/Kingwood (TX)**

**Massachusetts Institute of Technology**

In her first year of law school ... competed for M.I.T. Club Hockey team ... named team MVP for 1998-99 season ... **Prep:** Member of the National Honor Society ... graduated top-10 in class of over 800 ... **Personal:** Parents are Michelle and Don Gehrke ... born 1-21-78 ... law student



## 21 Chanda Gunn

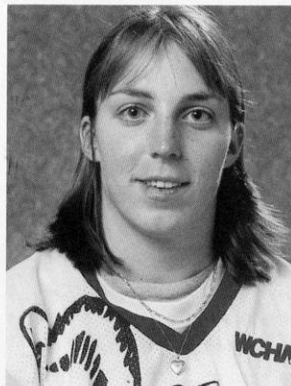
**Freshman • 5-7**

**Goaltender**

**Huntington Beach, CA/Taft School (CT)**

**Prep:** Attended the USA Hockey Youth Development Camp in 1997 and 1998 ... made 47 stops on 48 shots in the semifinals to help Team California's 19-&-under women advance to the finals of the 1998 USA Hockey Women's National Championship ... played a year at Taft School putting up five shutouts and a 1.85 GAA ... selected as a New England All-Star ... lettered in soccer as a senior ... ran track as a freshman and sophomore and was part of the Sunset League Champion

team ... **Personal:** Parents are Penny and Rod Gunn ... born 1-27-80 ... major is undeclared



## 11 Theresa Hilleman

**Senior • 5-7**

**Defenseman/Forward**

**Richland Center, WI/Richland Center**

Played for the UW Women's Ice Hockey Club ... also played two years for the Madison Lightning ... **Prep:** Four-year letterwinner in softball ... two-time team captain and all-conference player ... named team MVP as a junior ... first-team academic all-state pick as a senior ... captained Richland Center High School basketball team as a senior ... earned two letters in basketball and one in volleyball ... **Personal:** Parents are Judith and William Hilleman ... born 7-12-77 ... in her fifth year studying behavioral science & law and social welfare



## 25 Liz Jankowski

**Freshman • 5-6**

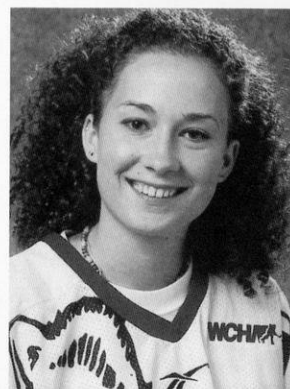
**Forward**

**Maple Grove, MN/Maple Grove**

**Prep:** Four-time all-conference hockey selection for Maple Grove High School ... led team in scoring as a sophomore and

captained team her junior and senior season ... excelled in track as a 400-meter runner ... personal-best time of 61.00 ... member of the National Honor Society ...

**Personal:** Parents are Jane and Mark Jankowski ... born 2-5-81 ... major is political science



## 8 Janelle Johnson

**Sophomore/Freshman • 5-6**

**Forward**

**Apple Valley, MN/Apple Valley**

Competed with the UW Women's Ice Hockey Club ... **Prep:** Competed in hockey, soccer, track, golf and cross country at Apple Valley High School ... earned a letter in hockey as a senior ... won 1998 Minnesota State High School Hockey title ... also played hockey freshman, sophomore and junior years ... ran cross country as a junior and track as a sophomore ... played soccer as a freshman and sophomore ... on golf team as a freshman ... **Personal:** Parents are Marlene and Leslie Johnson ... born 7-3-80 ... major is pharmacy



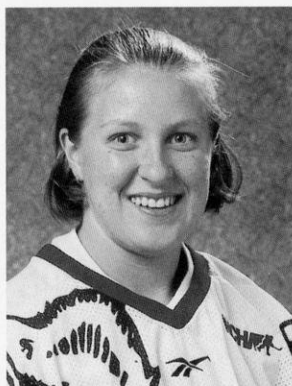
## 7 Kelly Kegley

**Freshman • 5-4**

**Forward**

**St. Paul, MN/South St. Paul**

**Prep:** Finalist for Ms. Minnesota Hockey her senior year ... three-time all-state player ... two-time team captain and MVP ... five-time all-conference selection ... four-time all-metro ... led team to state semifinal appearance as a senior ... tallied 297 points in high school, leading the team in scoring each season ... led the conference in scoring as a junior and senior ... all-conference soccer player and four-year softball letterwinner ... led the soccer team in scoring with 14 points as a senior ... won soccer coaches award and softball team motivator award as a senior ... named Best Girl Athlete at South St. Paul as a senior ... won Athena Award for school's outstanding student-athlete ... National Honor Society member ... **Personal:** Parents are Terese and Daniel Kegley ... born 9-30-80 ... plans to major in psychology and law



## 29 Jackie MacMillan

**Sophomore/Freshman • 5-4**  
**Goaltender**  
**Buffalo, MN/Buffalo**

Played at the 1999 U.S.A Hockey Women's Festival ... finished second at 1999 U.S. National Championships with the Minnesota Thoroughbreds ... allowed 0.76 goals against and put up a .948 save percentage with the Thoroughbreds in 1999 ... **Prep:** Three-year varsity player on her boys' high school team ... captained team as a senior ... earned all-conference and "Most Determined" player award in her senior season ... spent four years with the top club in Minnesota, the Minnesota Thoroughbreds ... team captain of the Thoroughbreds in 1997 season ... club was USA Hockey National Championship finalists in 1996 and 1997 ... member of the USA Hockey Youth Developmental Camp in Lake Placid, N.Y., during 1997-98 ... participant in USA Hockey's Women's Hockey Festival in Lake Placid in 1998 ... played softball for three years ... named captain

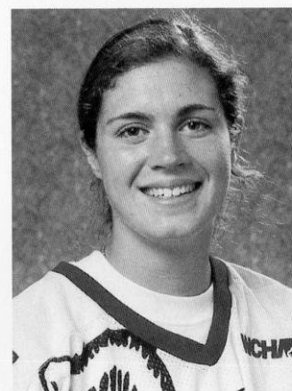
as a senior ... earned all-region honors as a catcher ... voted to the High School All-Star Series during her senior season ... ran cross country five seasons ... a two-time all-conference selection in cross country and softball ... named the Student-Athlete of the Year as a sophomore ... Buffalo High School Hall of Fame Finalist ... department awards for Academic Excellence in social studies and math in 1997-98 ... four-year honor student ... National Honor Society student for two years ... was a Buffalo Youth Hockey Goalie Coach for four years ... sports editor for her high school yearbook ... **Personal:** Parents are Tracy and Mike MacMillan ... born 10/8/79 ... major is undeclared



## 2 Jennifer Mead

**Freshman • 5-4**  
**Defenseman**  
**Eau Claire, WI/Regi**

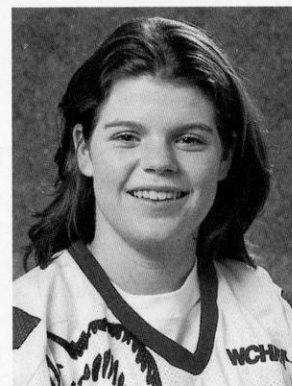
**Prep:** Earned hockey varsity letter her senior year ... played for Minnesota's top club team, the Minnesota Thoroughbreds, as a junior ... played volleyball as a freshman ... four-year honor roll student ... finished first at Mock Trial regionals ... **Personal:** Parents are Dareena and Aurthur Mead ... born 1-21-81 ... major is biology



## 17 Roseann Meyer

**Freshman • 5-10**  
**Defenseman**  
**Portsmouth, RI/Portsmouth**

**Prep:** Completed three seasons for Portsmouth High School hockey team ... earned second-team all-division as a sophomore ... a four-year tennis player, she earned all-county honors twice ... also selected to first-team and second-team all-division teams twice each ... named a second-team all-division softball player as a senior ... member of the Spanish Honor Society for three years ... **Personal:** Parents are Patricia and Norman Meyer ... born 2-15-81 ... major is undeclared



## 30 Jennifer Neary

**Sophomore/Freshman • 5-1**  
**Goaltender**  
**Dallas, TX/Phillips Exeter Academy (NH)**

Played for the Wisconsin Challengers ... **Prep:** Played four years of hockey with Phillips Exeter Academy ... posted a 1.22 goals against average with eight shutouts her senior year ... chosen as team MVP and helped team to a 20-4-2 mark as a senior ... has experience coaching at hockey schools ... **Personal:** Parents are Katherine and Mike Neary ... belongs to the National



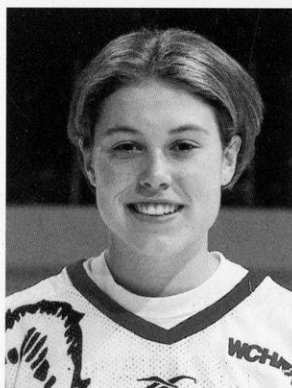
Society of Collegiate Scholars ... born 7-19-80 ... major is journalism



## 5 Abbey Olson

**Junior/Sophomore • 5-2**  
**Forward/Defenseman**  
**Mound, MN/Mound-Westonka**  
**UW-Eau Claire**

Played club hockey at UW-Eau Claire during 1997-98 season ... played for UW Women's Ice Hockey Club in 1998-99 ... **Prep:** Co-captained Mound-Westonka High School's inaugural girl's ice hockey team her senior year ... earned all-state academic honors ... also played midget hockey as a junior ... played four years of high school volleyball and three years of softball ... National Honor Society member ... **Personal:** Parents are Cyndi and Dave Olson ... born 12-5-78 ... majoring is agricultural journalism

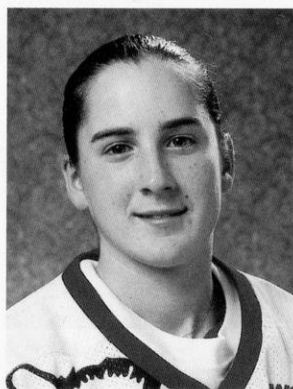


## 27 Julia Ortenzio

**Freshman • 5-5**  
**Forward**  
**Eden Prairie, MN/Eden Prairie**

**Prep:** Four-year letterwinner for Eden Prairie High School hockey team ... served as team captain as a junior and senior ...

named team MVP and all-conference as a senior ... finished high school career as the all-time leading scorer with 37 goals, 33 assists and 70 points ... picked as all-conference honorable mention during junior year ... starred for soccer team earning all-conference honorable mention as a senior ... finished soccer career as school's third-leading scorer with 18 goals, 7 assists and 43 points ... participant on Olympic Development Program soccer team her sophomore and junior years ... attended ODP Region II Camp ... also competed on track team ... member of the National Honor Society ... **Personal:** Parents are Gretchen and Thomas Ortenzio ... born 6-9-81 ... major is undeclared



## 13 Sis Paulsen

**Freshman • 5-2**  
**Defenseman**  
**Eau Claire, WI/North**

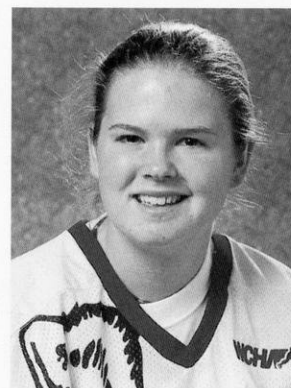
**Prep:** First girl to play boy's hockey in Eau Claire ... three-year letterwinner ... served as team captain her senior year ... winner of team's "Most Dedicated Player" award ... participant in the 1996 and 1998 Olympic Development Camp in Lake Placid, N.Y. ... 1998 and 1999 Women's Hockey Festival participant ... chosen as first-team all-state in softball as captain during senior year ... four-time first-team all-conference pick ... named team MVP as a junior ... second-team all-state as a sophomore ... also a three-time captain and all-conference volleyball player ... won "Most Improved" award as a sophomore ... **Personal:** Parents are Peggy and Harold Paulsen ... born 7-25-80 ... major is elementary education



## 22 Sarah Repp

**Freshman • 5-3**  
**Forward**  
**Antigo, WI/Antigo**

**Prep:** Captained high school tennis and softball teams as a senior ... named first-team all-conference as a centerfielder during junior campaign ... earned two letters in both tennis and softball ... also competed on basketball and volleyball teams during first two years at Antigo High School ... well-rounded student ... member of National Honor Society, band, German Club among others ... included in Who's Who Among American High School Students ... **Personal:** Parents are Nancy and Paul Repp ... born 4-5-81 ... major is undeclared

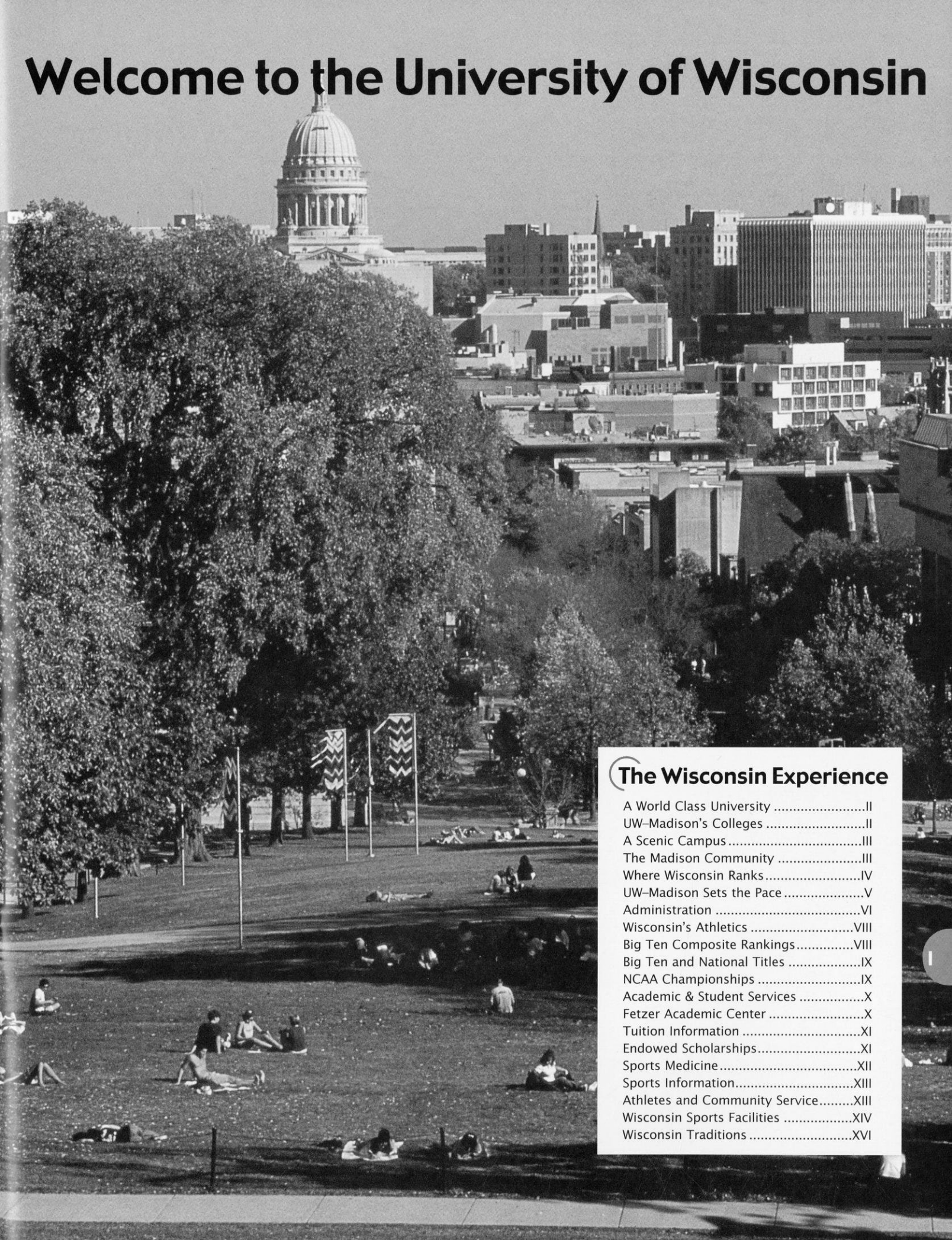


## 15 Melanie Schmitt

**Freshman • 5-6**  
**Forward**  
**Sheboygan, WI/North**

**Prep:** Earned three varsity letters in hockey on boy's team ... served as assistant captain her senior season ... earned four letters in soccer ... named team MVP and second-team all-conference as a senior ... captained her junior-year team ... also named second-team all-conference as a

# Welcome to the University of Wisconsin



## The Wisconsin Experience

A World Class University .....	II
UW-Madison's Colleges .....	II
A Scenic Campus .....	III
The Madison Community .....	III
Where Wisconsin Ranks .....	IV
UW-Madison Sets the Pace .....	V
Administration .....	VI
Wisconsin's Athletics .....	VIII
Big Ten Composite Rankings .....	VIII
Big Ten and National Titles .....	IX
NCAA Championships .....	IX
Academic & Student Services .....	X
Fetzer Academic Center .....	X
Tuition Information .....	XI
Endowed Scholarships .....	XI
Sports Medicine .....	XII
Sports Information .....	XIII
Athletes and Community Service .....	XIII
Wisconsin Sports Facilities .....	XIV
Wisconsin Traditions .....	XVI





# The Wisconsin Experience

## A World-Class University

The University of Wisconsin-Madison, one of the nation's leading institutions of higher education, is dedicated to the support of academic freedom.

Founded in 1848, the first class of 17 students enrolled February 5, 1849. Today, UW-Madison ranks as the nation's seventh largest university with 40,109 students. It is one of the nation's largest and most productive institutions of higher learning, and the student body is one of the most diverse in the country with students coming from every state. Wisconsin also ranks sixth in the nation for foreign student enrollment.

A total of 4,600 courses and 13,000 sections are offered in UW-Madison's 12 schools and colleges. Majors are available in 147 undergraduate, 161 master's, and 116 doctoral degree programs.

Award-winning research spanning the academic disciplines has earned UW-Madison a place among the world's elite institutions of higher education. Wisconsin has ranked among the top 10 universities in the United States in many scholarly reputational studies since 1910. The quality of its undergraduate, graduate and research programs is recognized around the world.

UW-Madison was named the eighth best national university in 1998 according to *U.S. News & World Report*. Twenty-four Wisconsin programs ranked among the 20

universities including No. 1 rankings for rehabilitation counseling, sociology and speech pathology.

UW-Madison faculty or alumni have won 14 Nobel Prizes and 22 Pulitzer Prizes. Forty-four faculty members have

**"A visit to the University of Wisconsin campus might be enough to convince you to attend this institution of higher learning. The campus, filled with lakes, trees and a rich mixture of architectural designs, is spectacular. Another reason you'll be convinced to attend UW is its academics."**

***The Young Woman's Guide to the Top Colleges, 1999***

been awarded the National Science Foundation's Early Career Development awards, nine have won the National Medal of Science, and five are Searles scholars. Fifty-two professors are members of the

National Academy of Sciences, 17 are members of the National Academy of Engineering, five are in the National Academy of Education and 48 are fellows in the American Physical Society.

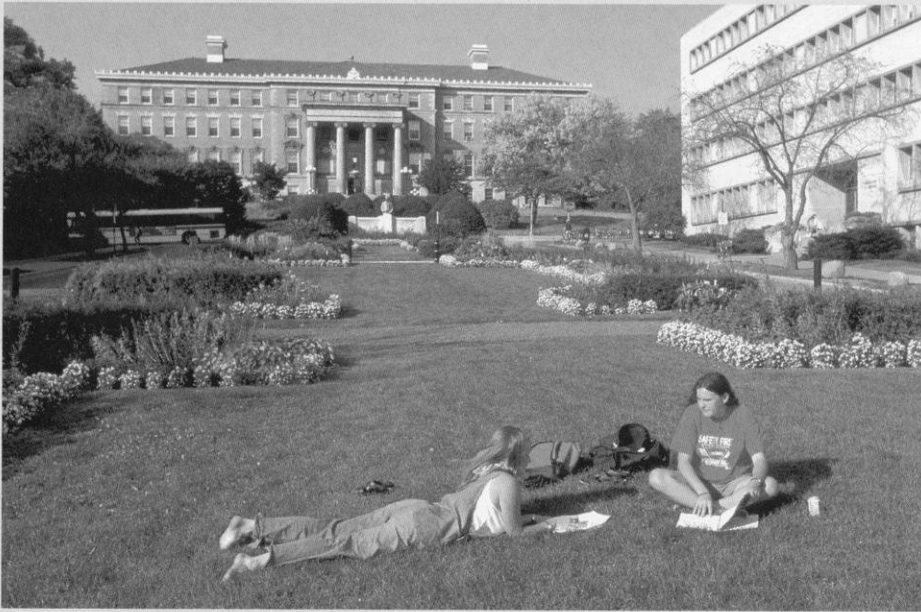
UW-Madison is one of the nation's first land-grant colleges, establishing a tradition of research in agriculture and the life sciences. The founders of the university developed the "Wisconsin Idea" ensuring "the beneficent influence of the university available to every home in the state."

UW-Madison is the largest institution in the University of Wisconsin System. It has the only public law and medical schools in the state as well as the only school of veterinary medicine.

## UW-Madison's Schools and Colleges

- College of Agricultural and Life Sciences
- School of Business
- School of Education
- College of Engineering
- School of Human Ecology
- College of Letters and Science
- School of Nursing
- School of Pharmacy
- Graduate School
- School of Veterinary Medicine
- Law School
- Medical School





**"Wisconsin has a myriad of opportunities available to its students, both in and out of the classroom. With its diverse student body, the school takes on the feel of a smaller private university rather than a large state institution. And that feeling transcends other aspects of academic and campus life."**

**Kaplan/Newsweek  
College Catalog, 1999**

## A Scenic Campus

One of the most picturesque college campuses in the country, UW-Madison covers 933 acres along the beautiful shores of Lake Mendota.

One mile from the capitol, traveling down historic State Street, the city was designed so the University and state would be linked, signifying the interrelated nature of the academic and political life of Wisconsin.

Madison's lakes, rolling hills, architecture, parks and arboretum have enhanced UW-Madison's reputation for scenic beauty.

Tree-lined Bascom Hill features a bronze statue of Abraham Lincoln, one of the University's most famous landmarks. Others include North Hall, the first building on campus; the Carillon Tower in front of the Social Science building; Library Mall, with its clock tower and fountain; and Picnic Point, which lies at the end of a 129-acre peninsula complete with hiking and biking trails—one of the most romantic spots on campus. Camp Randall Stadium is a fun place to be on a Saturday afternoon, especially during the infamous Fifth Quarter after a football game when the band entertains. The newly opened Kohl Center is home to the UW men's and women's basketball and men's ice hockey teams as well as a regular concert stop.

A favorite area for UW students to gather is the Memorial Union and its lake-side terrace. Here students can study or socialize against a backdrop of sailboats, canoes, sailboards, kayaks and swimmers, while enjoying the sunshine and breezes from Madison's largest lake, Mendota.

## The Student Body

Over 40,000 students populate the UW campus, including more than 10,500 graduate and professional students in numerous fields.

Although a UW Board of Regents policy limits undergraduate enrollment from outside the state to 25 percent, the University still maintains one of the nation's most diverse student bodies.

Students hail from every county in the state and every state in the nation, as well as from 117 foreign countries. UW-Madison ranks sixth in the nation for total foreign student enrollment.

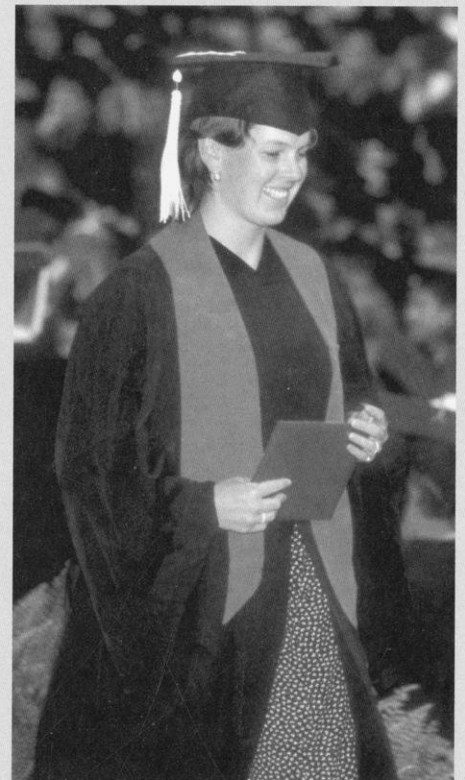
A greater effort is also being made to recruit and retain minority students and faculty. In the fall of 1998, African Americans, Hispanics, Native Americans and other minority groups accounted for more than nine percent of the student body.

## The Community

Madison, located in southern Wisconsin, is not only pretty to look at but fun to be in. Draped around five lakes, "Mad City" is the home of the University of Wisconsin and the state capital.

With a diverse population of 203,211, Madison offers the "big city" spheres of politics, arts and entertainment, as well as the attributes of a small town. It is a family and action-oriented community that promotes participation in government, education, the arts, sports and recreational activities.

Madison was named the best place to live in America in 1996 by *Money* magazine. Again, in 1998 *Money* magazine rated Madison the best mid-sized city in the Midwest. The July 1995 issue of *Outside* magazine called Madison a "Dream Town." The magazine also rated Madison as one of the top 15 "great sports towns" in the country. *U.S. News and World Report* named it one of the country's 10 Hottest Cities. Madison was also featured on the front page of the Life section of *USA Today* on July 12, 1995.





## WHERE WISCONSIN RANKS

Since 1910, the University of Wisconsin has ranked on the top 10 lists in every objective national faculty reputational survey. The quality of Wisconsin's undergraduate, graduate and research programs is recognized worldwide.

In 1999, *U.S. News & World Report* listed UW-Madison as eighth among public universities and 34th among all universities. The UW also rated in the top five for academic reputation among public universities.

Wisconsin was also ranked sixth in *Kiplinger's Personal Finance* Magazine Top 100 values in state universities in 1999.

The 1998 *Fiske Guide to Colleges*, the best-selling guide to colleges, gives the UW-Madison its highest academic ranking. In fact, UW-Madison is one of only eight public institutions in the country to receive the five-star rating.



## Funding and Support

► **Federal Grants:** In 1998, UW-Madison received over \$261 million in federal awards.

► **Research and Development Funds:** UW-Madison ranked third in the country for research and development expenditures in 1997, with \$432 million, according to the National Science Foundation.

► **Tuition:** Over the last 10 years, tuition for undergraduates at the UW-Madison has been consistently lower than the average for Big Ten schools ranking second-lowest for resident tuition and third-lowest nonresident tuition of the public institutions.

► **Private Support:** With private gifts totalling \$220 million in 1998, Wisconsin ranks first among all public institutions and fifth among all institutions.

► **Alumni:** The Wisconsin Alumni Association has a network of chapters in 125 cities around the world helping to serve some 300,000 alumni. The chapters have raised \$4 million in scholarships.

► **Peace Corps Volunteers:** UW-Madison has the largest number of currently serving Peace Corps volunteers in the nation and has produced the second most total number of volunteers since the program's founding.

## Degrees

► **Graduates:** Standard & Poor's 1996 survey lists Wisconsin as one of the nation's top producers of corporate executives, ranking second in producing bachelor's degree winners who go on to become corporate executives.

► **Doctoral Degrees:** UW-Madison is a national leader in doctoral degrees awarded ranking second in 1997. Between the school's founding and 1998, the UW-Madison awarded 34,012 doctoral degrees.

## Departmental Academic Rankings

► **Liberal Arts:** In its ranking of graduate programs in the liberal arts in 1999, *U.S. News & World Report* sited UW-Madison's sociology department as tops in the country. The magazine also ranked library science, eighth; education, ninth; social work, ninth; economics, 10th; history, 11th; psychology, 12th; political science, 14th; English, 17th; fine arts, 19th; and music, 20th.

► **Science Programs:** According to *U.S. News and World Report's* annual graduate school ratings, published in 1999, seven UW-Madison science programs ranked in the top 20: speech pathology, first; audiology, fifth; computer science, ninth; veterinary medicine, ninth; chemistry, 10th; biology, 12th; math, 14th; geology, 17th; physics, 18th; and nursing, 18th.

► **Engineering:** In 1999, *U.S. News and World Report* ranked Wisconsin's College of Engineering tied for 11th in the nation. Three specialties ranked among the top

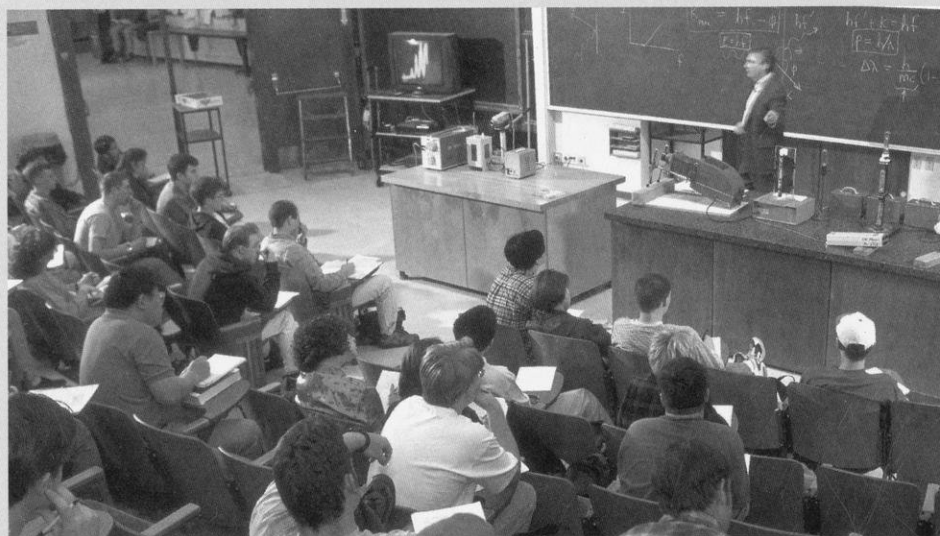
five in the country: nuclear, fourth; chemical, fifth; and industrial, eighth.

► **Business:** *Computerworld* ranked the business school's Information Systems program as one of the top 25 in the nation.

According to *U.S. News and World Report* in 1999, the business school is tied for 10th. The real estate program ranks second, insurance third, marketing seventh, general management eighth and accounting 14th.

► **Professional Schools:** *U.S. News and World Report* ranked four UW-Madison Schools or Colleges among the top 20 in the country: veterinary medicine, ninth; engineering, 12th; pharmacy, 16th; and nursing, 18th.

► **Libraries:** The UW-Madison has the 14th largest university library collection in the United States, with more than 5.8 million books in 45 libraries across campus.



## UW-Madison Sets the Pace

▶ with the oldest Scandinavian studies (1875), psychology (1888), agricultural economics (1909), genetics (1910) and wildlife management (1939) departments in the United States

▶ in establishing the nation's first magnetic observatory (1876)

▶ in discovering Vitamins A (1913) and B (1916)

▶ with the oldest radio station in the nation—WHA—which began broadcasting in 1917

▶ as the Memorial Union became the first public university union to serve beer (1933)

▶ in finding in 1937 that niacin supplementation prevents pellagra, a deadly disease that killed 5,000 people a year

▶ in the synthesizing of genes. Molecular biologist Har Gobind Khorana synthesizes the first gene. He received the 1968 Nobel Prize in medicine for his work in genetic coding.

▶ in finding which wavelength of ultraviolet light produces skin cancer (1941)

▶ in discovering the anti-cancer drug, fluorouracil (early 1950s)

▶ as Elizabeth and James Miller, UW Medical School professor of oncology and professor emeritus of oncology, were the first to identify characteristics among chemicals that cause cancer (1950s, 60s)

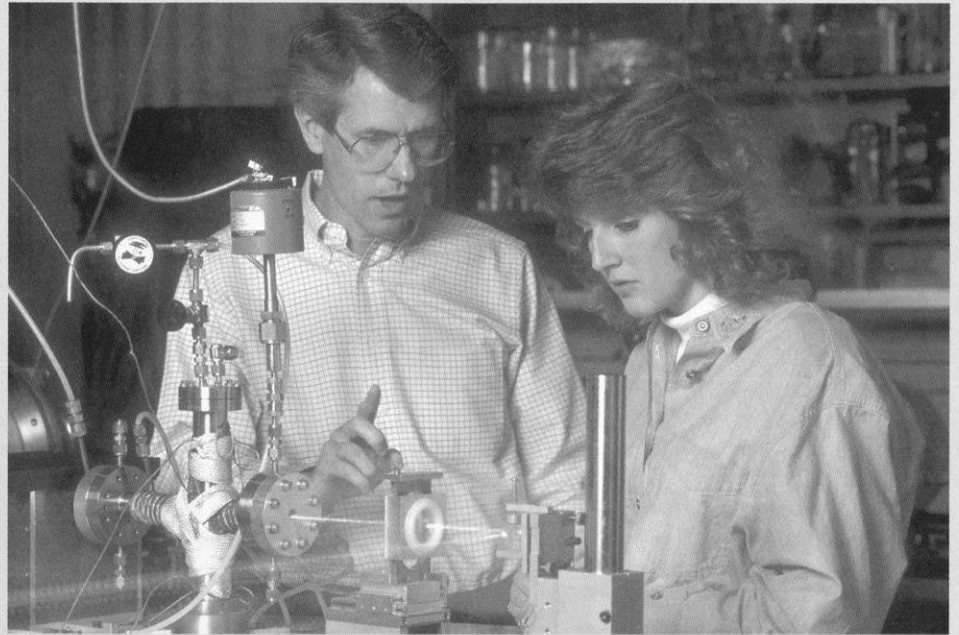
▶ with launching the Orbiting Astronomical Observatory, the world's first true observatory in space

▶ in revolutionizing brain surgery, as Dr. Manucher Javid, UW Medical School professor of surgery, became the first neurosurgeon to use a solution from the age-old compound urea during brain surgery on a human (1957)

▶ in laying the foundation for the U.S. Food and Drug Administration adoption of Sun Protection Factor (SPF) on sunscreens (1960s)

▶ when the National Organization for Women (NOW) was first housed in Kathryn Clarenbach's faculty office on campus

▶ in finding that the anti-estrogen drug tamoxifen can prevent breast cancer from recurring in certain women who have had cancer previously (1980s)



▶ in developing new techniques to measure bone tissue loss, known as osteoporosis

▶ with the Biotron, a research building that can control environmental conditions for experimental purposes

▶ with bone marrow transplants. Using techniques developed at UW-Madison, the first bone marrow transplant in the U.S. was done at UW Hospital. A UW team also discovers how to predict the success of bone marrow transplants by matching genes.

▶ in finding evidence linking cancer in laboratory animals with saccharin and cyclamates

▶ as UW Hospital and Clinics develop the nation's first Mobile Critical Care Unit, which duplicates facilities of a hospital intensive care unit and laboratories

▶ with the first and only medical physics department in the nation to exist within a medical school

▶ with the development of the world's first genetically altered trees

▶ in organ preservation breakthroughs. In 1987, surgeon Folkert Belzer used a cold storage preservation solution to preserve dog livers up to 36 hours and dog pancreases up to 72 hours. Clinical use of this new solution decreases the need for emergency transplantation, increases the number of livers and pancreases available to people who need transplants, and improves organ sharing among transplant centers



▶ as a UW-Madison researcher describes the atomic structure of a common cold virus

▶ with the establishment of the Center for Dairy Research, the nation's first such center to be established at a university (1986)

▶ in improved world map projection developed by professor Arthur H. Robinson.

▶ in Hector F. DeLuca, discoverer of a "super vitamin-D" compound, and continuing techniques for synthesizing the compound



# Administration



**David Ward**

David Ward was named chancellor of the University of Wisconsin in June 1993.

Ward has provided strong leadership for efforts to improve the quality of education. Changes inspired by Ward include enhanced student advising, particularly for underclassmen; expanded course access; a core curriculum; and increased opportunities for undergraduates to conduct research.

Ward serves on the Board of Directors of the National Association of State Universities and Land-Grant Colleges and chairs the Big Ten Council of Presidents/Chancellors.

The chancellor was born in Manchester, England, and received bachelor's and master's degrees from the University of Leeds. He earned a Fulbright Travel award to the United States in 1960 and received a doctorate from UW-Madison in 1963.

He served as chair of the geography department from 1974-77 and as associate dean of the Graduate School from 1980-87. He became vice chancellor for academic affairs in 1989, and in 1991, was named provost, chief deputy to the chancellor.



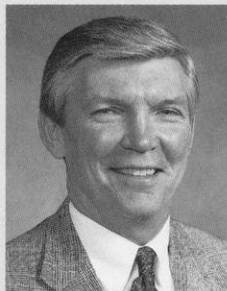
**Jim Hoyt**

Jim Hoyt, a professor in the UW's School of Journalism and Mass Communication, has served as the chair of the UW Athletic Board and as a UW Faculty Representative since 1991.

As Athletic Board chair, Hoyt oversees the governing body that supervises the day-to-day running of the athletic department. As a faculty representative, he serves on a number of committees of the NCAA, Big Ten Conference, and Western Collegiate Hockey Association.

A UW professor since 1973, Hoyt was the director of the School of Journalism and Mass Communication from 1981 to 1991. He teaches courses in the school's broadcast news sequence and has conducted extensive research on the effect of cameras in the courtroom. A former producer and editor for NBC News in Washington, D.C., he now consults for NBC News and a number of local television stations throughout the country.

Hoyt received his bachelor's, master's and Ph.D. from Wisconsin.



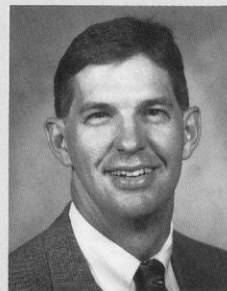
**Pat Richter**

Pat Richter, a former UW student-athlete, professional football player, and successful businessman, was the perfect choice to become Wisconsin's athletic director in December of 1989.

An all-America tight end for Wisconsin's 1963 Rose Bowl football team, Richter had a distinguished career with the National Football League's Washington Redskins from 1963-71. He was inducted into the National Football Foundation College Hall of Fame and the Rose Bowl Hall of Fame.

Richter earned his bachelor's degree in landscape architecture from the UW in 1964, earning Academic all-America honors in 1962 and was named Wisconsin's Big Ten Medal of Honor recipient in 1963. He received his law degree from the UW in 1971. In 1995, he was inducted into the GTE/CoSIDA Academic Hall of Fame, and was honored as an NCAA Silver Anniversary Award winner for post-college achievements.

After employment with a Madison law firm, he joined the Oscar Mayer Foods Corp., and worked his way up to vice president of personnel.



**Al Fish**

Al Fish begins his 11th year as the administrative officer for the division overseeing facility planning, event management, technical services, equipment services and the University Ridge Golf Course. He also begins his second year of supervising the sports of football and men's and women's rowing.

Fish has been instrumental in the planning and construction of the Kohl Center, Fetzer Academic Center and Goodman Softball Complex. Future projects under Fish's direction include a new swimming facility, and new and expanded rowing facilities.

In 1989, Fish came to the division after three years as the Director of Policy and Budget for the Department of Health and Social Services. He worked as a liaison for Governor Tony Earl to the State Assembly, a budget analyst for the State Budget Office, and as a program evaluator for the Legislative Audit Bureau.

A 1973 graduate of Luther College in Decorah, Iowa, Fish was a four-year letterwinner in golf.



**Cheryl Marra**

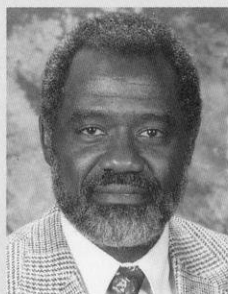
Cheryl Marra begins her 10th year as an associate athletic director at Wisconsin. Marra oversees the men's and women's programs of basketball, golf, swimming and diving, and women's volleyball. She also serves as the primary women's administrator to the Big Ten Conference and the NCAA, and coordinates all booster clubs.

Under Marra's guidance, Wisconsin has served as host to the 1993 and 1998 NCAA Division I Women's Volleyball Championships, which garnered record-setting attendances, and the 1998 NCAA Division I Women's Golf Championship.

Marra came to Wisconsin from Denison University where she served as the women's athletic director from 1983-90. She was an assistant professor in the physical education department, and the women's soccer and track and field coach.

Marra is actively involved on various NCAA and Big Ten committees.

A 1977 graduate of Slippery Rock State College with a bachelor's degree in physical education and health, Marra received her master's degree in physical education from Ohio State in 1983.



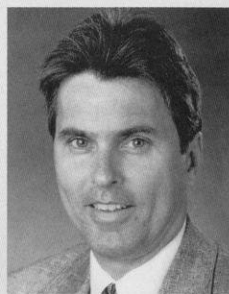
## Mike Moss

Mike Moss begins his third year as the associate athletic director in charge of men's and women's ice hockey, men's and women's cross country and track, women's softball and wrestling. He also oversees the academic affairs and sports medicine departments as well as serves as the campus student-athlete services coordinator.

Moss served as a Director of Sports Operations for the Atlanta Olympic Games Committee from 1993-96. He was responsible for coordinating the sports of archery, boxing, cycling (road and track), equestrian, modern pentathlon and tennis.

Prior to his work with the Olympics, Moss served as the associate athletic director for business and student services at the University of California for 13 years.

Moss is a 1961 graduate of Ohio University with a bachelor's degree in journalism. He received his master's in science and physical education from California State University-Hayward. He is a retired lieutenant commander in the U.S. Naval Reserve.



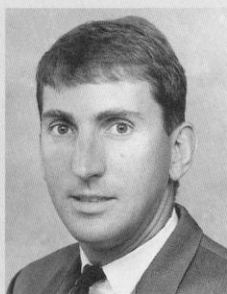
## Vince Sweeney

In his ninth year at Wisconsin, Vince Sweeney is the associate athletic director in charge of external and internal communications. He oversees the marketing, promotions, sports information, special events and fundraising areas as well as serving as the liaison with the Athletic Board and Alumni Association.

Sweeney is on the board of directors of the National Association of Collegiate Marketing Administrators and of the Greater Madison Convention and Visitor's Bureau. He is on the NCAA subcommittee on basketball marketing and is a consulting editor for Collegiate Sports Marketing. His department won two "Awards of Excellence" for Athletics Management magazine in 1995.

Prior to joining the UW, Sweeney worked for 13 years in sports journalism, where he earned several awards as a reporter and editor.

Sweeney is a 1978 graduate of UW-Madison with a degree in journalism and mass communication.



## Jamie Pollard

Jamie Pollard is in his second year as the chief financial officer at Wisconsin. He is in charge of the accounting, budgeting, purchasing, travel and payroll for the department as well as supervises the ticketing and personnel departments.

Pollard comes to Wisconsin after serving as the associate athletic director for administration at the University of Maryland. He also served in a similar position at Saint Louis University from 1989-94. Prior to 1989, he was a staff accountant at Arthur Anderson & Company in Milwaukee.

Pollard, a 1987 graduate of UW-Oshkosh with a degree in business administration, won the 1987 NCAA Division III title in the 5000 meters. He is a certified public accountant and is a member of the College Athletic Business Managers Association.



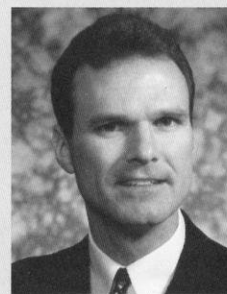
## Terry Gawlik

Terry Gawlik is in her second year as an assistant athletic director at Wisconsin. She oversees the men's and women's soccer and tennis programs. Gawlik is also in charge of the department's program assistants and coordinates tournaments and special projects.

From 1994-98, Gawlik served as an administrative assistant and event coordinator at the UW. She supervised game-day operations, post-season tournaments and booster club events for men's and women's basketball and volleyball as well as assisting with the marketing and promotions. She was also an assistant director in the Division of Recreational Sports during that time.

Gawlik is a former coach of women's basketball, women's track, men's and women's tennis and women's volleyball on the NCAA Division III level.

A 1981 graduate of Southwestern University with a bachelor's degree in physical education and education, Gawlik received her master's degree in physical education and educational administration from Southwest Texas State University in 1983.



## Tim Bald

Tim Bald begins his second year as the Director of Compliance for the UW Athletic Department. He is the chief rules administrator for the university.

Bald comes to Wisconsin from Iowa State where he served as the compliance director from 1994-97. He oversaw all areas of NCAA compliance for the Cyclones including student-athlete recruiting, eligibility certification, financial aid and athletic participation. He also served as ISU's football program administrator from 1986-93.

Bald is a member of the National Association of Compliance Coordinators and has participated in several NCAA regional seminars.

A 1980 graduate of Loras College with a degree in marketing, Bald earned his master's degree in sports management from Western Illinois in 1985.



# University of Wisconsin Athletics



The University of Wisconsin-Madison offers its student-athletes one of the premier intercollegiate athletic programs in the country.

As a member of the prestigious Big Ten Conference, Wisconsin offers its student-athletes the best in education, athletic opportunities, coaching and on-field competition at the NCAA Division I level.

Celebrating over 1000 years of competition in some men's sports, Wisconsin's men's teams compete in basketball, cross country, football, golf, ice hockey, rowing, swimming and diving, soccer, tennis, track and field, and wrestling.

Established July 1, 1974, the 12-sport women's athletic program offers basketball, cross country, golf, ice hockey, lightweight rowing, openweight rowing, soccer, softball, swimming and diving, tennis, track and field, and volleyball.

Wisconsin has ranked among the top 35 NCAA Division I programs for the past four years. In 1998-99, Wisconsin tied for 25th in the Sears/National Association of Collegiate Directors of Athletics Directors Cup competition, which recognizes the best Division I college sports programs in the nation.

Fifteen of Wisconsin's 22 sports qualified as teams or individuals for their respective national championships in 1998-99. The women's cross country team finished fifth at the NCAA Championship while the men's team was sixth. The football team won the Rose Bowl and ended the season ranked fifth while the women's volleyball team advanced to the elite eight of the NCAA tournament for the second consecutive year.



*The Wisconsin football team takes to the field for a home game. The Badgers have participated in five bowl games in the last six years winning four times including the 1994 and 1999 Rose Bowls.*

Individually, Badger athletes earned 35 all-American honors during the year.

Qualifying for post-season competition as teams or individuals were men's basketball, men's and women's cross country, football, men's and women's rowing, women's soccer, men's and women's swimming, women's tennis, men's and women's track and field, volleyball and wrestling.

Wisconsin was the unofficial 1998-99 Big Ten Conference All-Sports champion.

The Badgers crowned two Big Ten team champions in women's cross country and football while second-place finishes were earned by women's soccer, women's tennis, women's outdoor track and volleyball.

Two Badger coaches were named the Big Ten Coach of the Year in their respective sports while three athletes were named

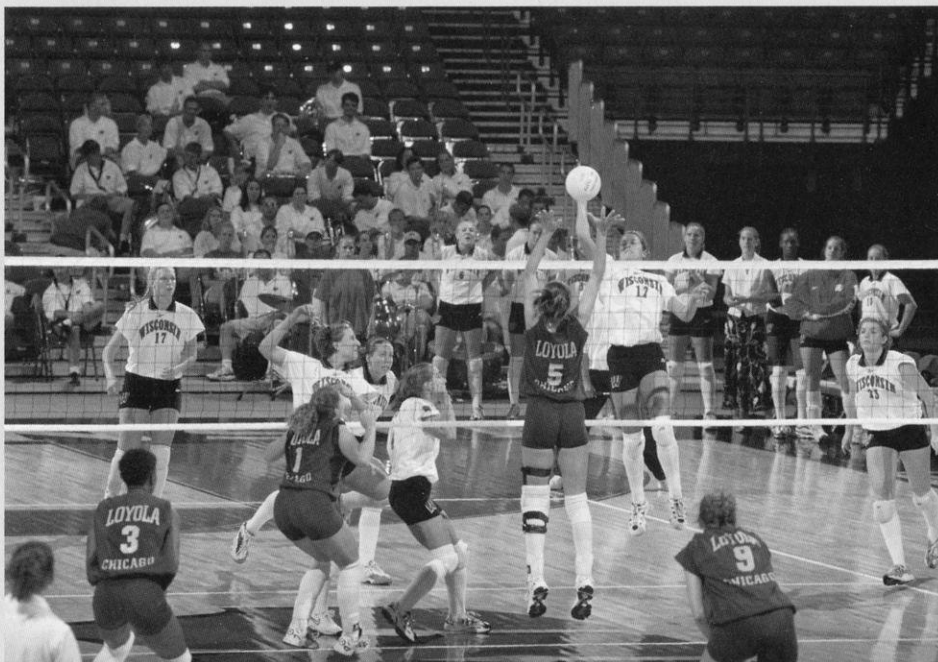


*The women's cross country team won the 1998 Big Ten Conference Championship and ended its season with a fifth-place finish at the NCAA Championship.*

## 1998-99 Big Ten Composite Rankings

1.	Wisconsin	8.08
2.	Minnesota	7.66
3.	Michigan	7.59
4.	Penn State	6.56
5.	Illinois	6.48
6.	Ohio State	6.27
7.	Northwestern	5.94
8.	Michigan State	5.88
9.	Purdue	5.73
10.	Indiana	5.60
11.	Iowa	5.07

Big Ten Conference composite rankings are not sanctioned by the conference office. Points are awarded for each school's finish in 12 men's and 10 women's conference championships. The first-place team receives 11 points while the 11th-place team receives one point. The total points are divided by the number of sports in which each school participates.



*The Wisconsin volleyball team has advanced to the finals of the NCAA Regional the last two years finishing among the top eight teams in the nation.*

the Big Ten Athlete of the Year and three were named the Big Ten Freshman of the Year. Wisconsin athletes also claimed 17 Big Ten individual titles. A total of 77 all-conference honors were earned during the season.

Academic honors also came in with two athletes earning Academic all-American honors, seven earning Academic all-district honors and 134 student-athletes earning Academic all-Big Ten honors.

## Big Ten and National Titles

Sport	Big Ten	National
Men's Basketball	14	1
Men's Cross Country	34	3
Women's Cross Country	12	2
Football	9	0
Men's Golf	3	0
Women's Golf	1	0
Men's Ice Hockey	5	5
Men's Rowing	NA	7
Women's Rowing	NA	2
Women's Ltwt. Rowing	NA	0
Men's Soccer	1	1
Women's Soccer	1	0
Women's Tennis	1	0
Men's Indoor Track	14	0
Women's Indoor Track	11	0
Men's Outdoor Track	10	0
Women's Outdoor Track	13	0
Volleyball	2	0

Note: Women's Sports were officially added to the UW Athletic Program prior to the 1974-75 season.

## NCAA Championships

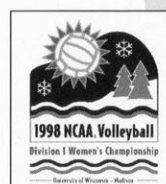
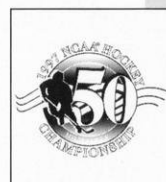
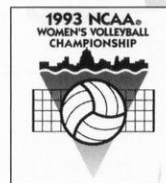
In the last seven years, the University of Wisconsin has played host to five NCAA Championships.

The Badgers have played host to the NCAA Men's Ice Hockey Championship in 1993 and 1997. The 1993 event sold out in three months, the fastest sell out in NCAA hockey history.

Wisconsin played host to the NCAA Women's Volleyball Championship in 1993 and 1998. The Badgers shattered the attendance records for the championship match and two-day event both years.

The UW was also the site of the 1998 NCAA Women's Golf Championship. The event was the first national championship held at University Ridge Golf Course and the first women's championship shown live on national television showcasing the Ridge.

The NCAA Men's Basketball Tournament will come to Wisconsin in 2002 when the Badgers play host to a regional in



*The Wisconsin women's soccer team advanced to the second round of the NCAA Tournament in 1998 and finished second in the Big Ten Conference.*



# Student-Athlete Support Network

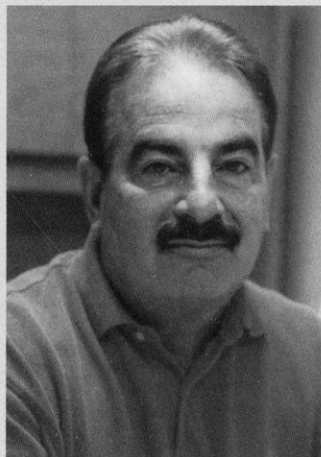
## Academic & Student Services

The mission of the Academic Affairs Office is to provide student-athletes with the maximum opportunity for academic and athletic excellence. University of Wisconsin athletes have a history of academic success and much of the credit for that impressive record is due to the advising system available to the student-athletes.

Director **Alan Zussman** supervises a staff of six advisors which conduct the program offered to the nearly 700 student-athletes. The advising staff of **Mary Weaver-Klees, Craig Hudson, Chris Butler, Doug Tiedt, Liane Kosaki** and **Jerry Darda** have a comprehensive understanding of academics at Wisconsin, and a permanent line of communication with all university departments. The staff renders quality academic and personal support to student-athletes and assists coaches in providing the best possible collegiate experience.

For those student-athletes who request assistance, advising sessions are offered on a one-to-one basis at a time appropriate for the athlete. Wisconsin athletes are degree-oriented while allowing for the flexibility to explore different areas. The advising staff takes a personal approach to each athlete in determining his or her individual needs, personal or academic.

Student-athletes at Wisconsin receive recognition for outstanding academics in a number of ways. The Big Ten Conference honors scholar-athletes with Academic all-Big Ten honors while the UW Athletic Board recognizes Athletic Board Scholars for the highest grade point average in each sport. In addition, student-athletes may be nominated for Academic All-America honors through the sports information office.



*Director of Academic and Student Services, Alan Zussman*



*The University of Wisconsin Academic Affairs staff (left to right): Regina Carey, Alan Zussman, Pat Jacobson, Liane Kosaki, Doug Tiedt, Nancy Gatyas, Craig Hudson, Paul Krc, Nancy Kreklow, Lou Ann Lund, Jerry Darda, and Mary Weaver.*

## The Fetzer Student Athlete Academic Center

Opened in the spring of 1997, the Fetzer Student Athlete Academic Center is the newest aid to Wisconsin student-athletes in achieving their academic goals.

The 15,000 square-foot, state-of-the-art facility serves the needs of all men and women student-athletes. The Center features an open area with carrels that can accommodate up to 30 students. There are 11 study rooms of different shapes and

sizes including a 55-seat auditorium. A computer room houses 22 PC's while the entire Center is wired with voice/data jacks and power ports.

Student-athletes can drop in before practice or between classes to study or meet with the advisors and grant-in-aid staff whose offices are also located in the center.



*The Fetzer Student Athlete Academic Services center, a state-of-the-art facility located in the lower level of the McClain Center, opened in 1997. The \$2.1 million center is one of the best in the nation and includes 11 study rooms, a computer room, and a 55-seat auditorium.*

## Scholarships

UW-Madison is proud to offer to its prospective student-athletes one of the most comprehensive athletic scholarship programs in the nation. As a Division I member of the National Collegiate Athletic Association (NCAA), scholarships are awarded to athletes on a one-year renewable basis if scholastic and athletic commitment are maintained.

Scholarships are available in all varsity sports with the exception of men's rowing, which does not grant scholarships. Full scholarships include the cost of room and board in addition to tuition and fees. The selection of scholarship recipients is based on athletic ability and projected academic success at Wisconsin.

Prospective student athletes who are interested in applying for grants-in-aid should contact the coach of their respective sports in care of Division of Intercollegiate Athletics, 1440 Monroe St., Madison, WI, 53711.

## Undergraduate Tuition and Fee Information 1999-2000

### (both semesters)

Wisconsin Res. Tuition and Fees	\$3,737
Minnesota Res. Tuition and Fees	\$4,620
Non-Resident Tuition and Fees	\$13,052
Undergraduate Room and Board	\$4,283

## Where to Write

### Office of Undergraduate Admissions

University of Wisconsin-Madison  
140 Peterson Office Building  
750 University Avenue  
Madison, WI 53706  
Phone: (608) 262-3961

### University Housing

University of Wisconsin-Madison  
Slichter Hall  
625 Babcock Drive  
Madison, WI 53706  
Phone: (608) 262-2522

### Office of Student Financial Services

University of Wisconsin-Madison  
432 North Murray Street, Room 231  
Madison, WI 53706  
Phone: (608) 262-3060

### Academic & Student Services

University of Wisconsin-Madison  
1440 Monroe Street  
Madison, WI 53711  
Phone: (608) 262-1787

## Endowed Athletic Scholarships

As more and more colleges and universities turn to innovative and effective ways of meeting the mounting financial challenges of supporting their intercollegiate athletic programs, it becomes increasingly evident that one of the most successful strategies is the establishment of endowed athletic scholarships.

At the University of Wisconsin-Madison, endowment funds to support athletic scholarships are normally created through gifts to the UW Foundation. A portion of the income from the endowed fund is used each year for scholarship support, and the remainder is reinvested

in the principal.

The following endowed scholarships, named for the donor or for someone the donor wishes to honor, provide full or partial grants-in-aid to Badger student-athletes. Many thanks to our generous supporters!

For information about how to create a named scholarship in men's or women's athletics or how to contribute to an established endowment, please contact Marija Neubauer or Randy Handel, Directors of Development for Intercollegiate Athletics, UW Foundation, 1848 University Ave., Madison, WI 53711 or call 608/263-4545.

Michael and Edith Agazim Memorial Scholarship—Football

Theodore and Marcella Albrecht Memorial Scholarship—Wrestling/Swimming

Alan Ameche Scholarship—Football

Anita J. Angus Scholarship

Badger Advantage Club Scholarship—Tennis (W)

Badger Crosscourt Club Scholarship—Tennis (M)

P. Goff Beach Memorial Scholarship

Art Brazzy Scholarship—Football

Dick and Marlene Cable Scholarship—Basketball (M)

Charles H. Carpenter Scholarship—Football

Bob and Honner Cooper Scholarship—Swimming (W)

Raymond M. and Margaret F. Davis Scholarship—Football

Jimmy Demetral Scholarship—Football

Peter Gambino Memorial Scholarship—Golf (M)

Mel Goldin Memorial Scholarship—Track (M)

Robert and Irwin Goodman

Sarah Gornick—Rowing (W)

Elroy Hirsch Scholarship—Football

John Jardine Memorial Scholarship—Football

Warren R. Jollymore Memorial Scholarship

Jean W. Kilgour Scholarship—Women's Athletics

Jim Kalscheur/Ron Krantz Scholarship—Men's Athletics

Forrest and Mildred Kubly Scholarship

Mildred K. and Kenneth J. Kuebler Scholarship

Lakeland Union High School Scholarship

Lloyd Larson Scholarship—Football

Edessa K. Lines Scholarship—Women's Athletics

Marnee Loeffler Memorial Scholarship—Hockey

Steve Lowe Memorial Scholarship—Volleyball

George A. Martin Memorial Scholarship—Wrestling

Jim McCallum Memorial Scholarship—Basketball (M)

Henry McCormick Memorial Scholarship—Men's Athletics

Richard W. and Ellen H. Meister Scholarship—Basketball (M)

John Messmer Scholarship—Football

Tim and Beth Mielcarek Scholarship—Basketball (M)

Charlie Mohr Memorial Scholarship—Men's Athletics

Frank Molinaro Memorial Scholarship—Golf (W)

Robert Monteith Scholarship—Football

David and Anne Nerenz—Soccer (M)

Albert O. Nicholas Scholarship—Basketball (M)

Michael M. Nicholson Scholarship—Football

Kit Saunders Nordeen Scholarship—Women's Athletics

Harold Ofstie Memorial Scholarship

Francis A. Ogden and Mary Louise Monteith Scholarship—Football

Kathryn E. Parkinson Scholarship

Ralph E. Petersen Scholarship—Swimming (M)

Eugene C. Peterson Scholarship

H.H. Petrie Memorial Scholarship—Hockey

James Plopper Scholarship

Louis F. Reinke Scholarship

Fred H. Ripley Scholarship—Crew

Carol Robinson Scholarship

Harold and Doreen Scales Scholarship

William E. Schmidt Scholarship

Ursula Schmitt Scholarship—Women's Athletics

Armund J. "Pug" Schoen Scholarship—Tennis

Schreiner-Hoskins Scholarship—Football

Kenneth M. Schricker Memorial Scholarship—Football

C. Harvey Sorum Memorial Scholarship—Tennis

William and Eva Mae Stolte Memorial Scholarship

Guy Sundt Scholarship—Track/Cross Country

Peter Tegen Endowed Scholarship—Track/Cross Country (W)

L.N. Van Dyke Scholarship—Football

Charles H. Vogts Scholarship—Basketball (M)

Francis A. and Elizabeth N. Wiesner Scholarship

Tom Wiesner Scholarship—Football

John McMynn Williams Scholarship—Basketball (M)

Wisconsin Eastern Alumni Scholarship

Wisconsin Golf Club Scholarship

John E. and Glenn M. Wise Scholarship—Basketball (M)

Women's Intercollegiate Sports Club Scholarship

George L. Wright Scholarship—Track/Cross Country



## Sports Medicine

The goal of the sports medicine staff is to provide all University of Wisconsin student athletes with high quality health care. Wisconsin's Sports Medicine program features state-of-the-art facilities and the services of leading sports medicine and health care professionals.

The sports medicine staff consists of team physicians, dentists, athletic trainers, and other medical and allied health professionals. The day-to-day care, prevention, and treatment of injuries to Wisconsin athletes is supervised by a staff of 10 full-time and three graduate assistant N.A.T.A.-certified athletic trainers. Under the direction of head athletic trainer **Dennis Helwig**, the Sports Medicine program focuses on injury prevention. Staff members **Chuck Hart, Jan Helwig, Mike Johnson, Barb Pearson, Henry Perez-Guerra, Andy Rhodey, Heidi Stettler, Laura Walluk, and Andy Winterstein** utilize functional measures, provide dietary analysis, measure physiological capacity and outline programs to improve flexibility.

The Sports Medicine facility in the McClain Center features an extensive collection of therapeutic and rehabilitation equipment including a 50-foot, two-lane-rehabilitation pool, and an on-site x-ray facility. Considered one of the nation's finest, the McClain Sports Medicine Center offers an environment conducive to expedient care, and a healthy return to competition.



*(Back Row): Barb Pearson, Enrique Perez-Guerra, Becky Nelson, Heidi Stettler, Dennis Helwig, Jan Helwig. (Front Row): Janet Benson, Laura Walluk, Chuck Hart, Lisa Lemke, Andy Hrodey, Melissa Bryne, Beth Cranley, and Andy Winterstein*

Should an injury occur, athletes are seen immediately by team physicians affiliated with the world-renowned UW Hospitals and Clinics. Medical director **Dr. Ben Graf** is responsible for all services provided to our student-athletes. Orthopedic care is directed by team physician **Dr. John Orwin** while general medical care is directed by the head of primary care, **Dr. Greg Landry**.

In addition to the headquarters in the McClain Athletic Facility, auxiliary athletic training rooms are located in the Stadium, Natatorium, UW Field House and Kohl Center. All training areas are equipped with the finest therapeutic modalities and rehabilitative apparatus.



*The McClain Sports Medicine facility is considered one of the nation's finest and features an extensive collection of therapeutic and rehabilitation equipment including a 50-foot, two-lane-rehabilitation pool (left), and an on-site x-ray facility.*

## Sports Information

Directing the communications for the 23 sports in the Division of Intercollegiate Athletics is the responsibility of the University of Wisconsin Sports Information Offices.

These offices utilize a variety of communications systems including the world wide web to provide student-athletes the opportunity to be recognized for their athletic endeavors.

The offices provide and maintain many resources such as records, fact sheets, photographic files, statistics, media guides and event programs in meeting the information requests of the media, coaches, administrators, opponents and the general public.

The director's of women's and men's sports information **Tamara J. Flarup** and **Steve Malchow**, and their respective staffs, maintain close contact with local, regional and national media as well as the athlete's hometown media in providing information. These offices prepare news releases, design sports brochures and media guides, and provide post-event results for print and electronic media, and the department's web pages. Besides the directors, members of the women's staff include associate director **Diane K. Nordstrom** and assistant **Paul Capobianco**, and several students. The men's staff includes associate director **Justin Doherty**, assistant director **Julie Kluge**, and interns **Britt Kinder** and **Brian Lucas**, as well as a number of student assistants.



**LEFT: The women's sports information staff: Diane Nordstrom, Tam Flarup, and Paul Capobianco.**



**RIGHT: The men's sports information staff: Steve Malchow, Julie Kluge, Justin Doherty, Brian Lucas, Britt Kinder and Barb Wyatt.**

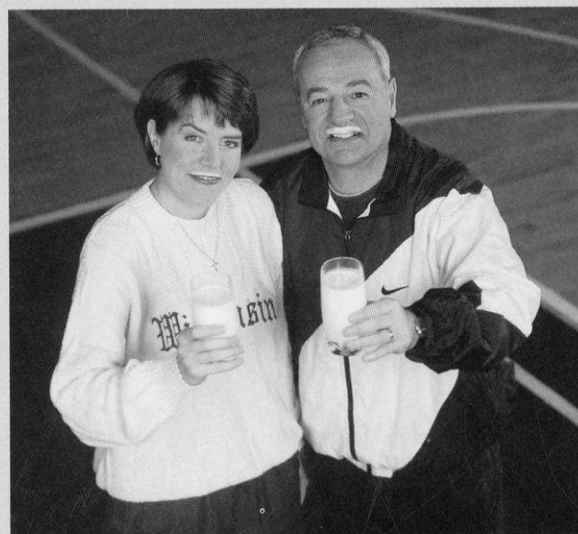
## Community Service

The Madison community is truly supportive of the University of Wisconsin athletic teams and its many student-athletes. In return for that support, many athletes take time out of their busy schedules to show their appreciation and involvement in the city of Madison and Dane County through their community service efforts.

Student-athletes have assisted in a variety of service projects including the AIDS Support Network, Big Brothers and Big Sisters, Habitat for Humanity, Special Olympics, United Way, visiting children in local hospitals with the Amanda the Panda program, and volunteering at local hospitals. The athletic department also donates a number of season tickets to local charities for fund-raising purposes.



**The Wisconsin football team helps out with numerous projects in the South Madison Neighborhood.**



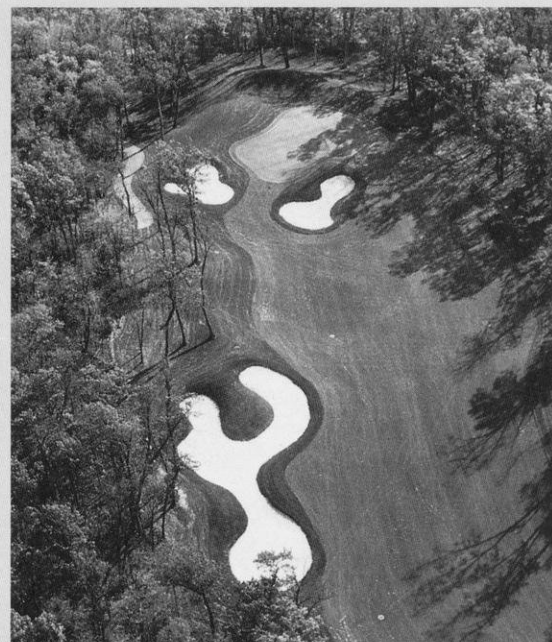
**Wisconsin women's basketball coach Jane Albright and men's basketball coach Dick Bennett donned milk mustaches in a national promotion for drinking milk.**



# Wisconsin Facilities



The McClain Athletic Facility offers indoor practice facilities for football, soccer and track and field. A 90-yard newly resurfaced artificial turf practice area is contained in the 76,380-square foot main floor. The lower level houses the Fetzer Student Academic Center, the headquarters of the Badgers Sports Medicine staff, a fully-equipped weight room and locker rooms for football, men's and women's track, softball, and men's and women's soccer.

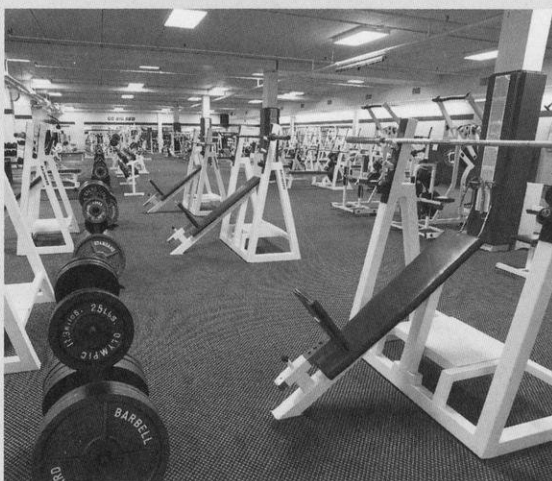


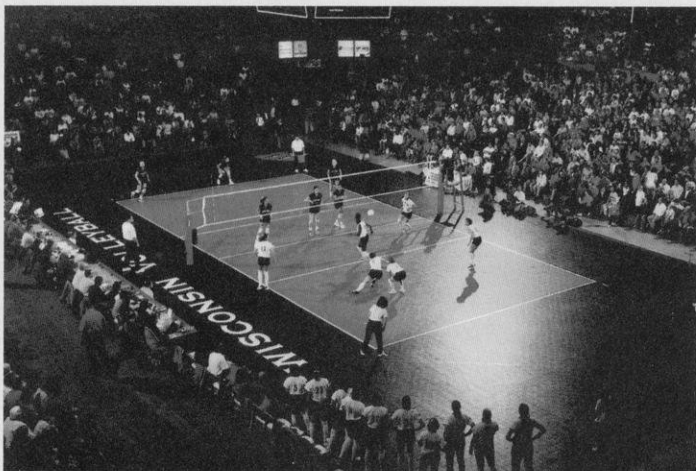
Top: UW golfers have the opportunity to compete on one of the finest courses in the Midwest—University Ridge. The facility features a par-72, 18-hole course, 15,000-square foot practice green and 5,000-square foot chipping green. It was the site of the 1998 NCAA Division I Women's Golf Championship.

Left: The Camp Randall Memorial Sports Center or Shell features a 200-meter Martin rubber track surrounding four basketball/volleyball courts that double as throwing and jumping areas for indoor track meets. The Shell, which has a seating capacity of 2,500, was the site of the 1999 Big Ten Conference Indoor Men's Track & Field Championship.

Bottom Left: The Kohl Center, which opened in January of 1998, is the home of the Badger basketball and men's hockey teams. One of the finest on-campus athletic facilities in the nation, the \$76 million facility includes a separate practice gym, locker rooms and lounge areas, and coaches' offices.

Bottom Right: Weight training areas in the McClain Center and Camp Randall Stadium feature free weights and stereo music in spacious, carpeted rooms. Four full-time and two part-time weight training instructors monitor and advise all Wisconsin student-athletes.





*The Wisconsin Field House, which seats 10,600, is the practice and competitive facility for the Badger volleyball team as well as the competitive facility for the wrestling squad. It features four locker rooms, and an athletic training area.*



*The Wisconsin tennis teams have the competitive advantage of playing year-round at one of the best college facilities in the United States—the Nielsen Tennis Stadium. The stadium features 18 tennis courts (12 indoor and six outdoor), five squash courts, one squash doubles court, and seats 1,500 spectators.*



*The swimming and diving teams have two pools for practice and competition—the Natatorium and Southeast Recreational Facility. The “Nat” contains an eight-lane, 25-yard pool equipped with an automatic Colorado Timing System and digital readout score board. The 50' x 40' diving well is fitted with three one-meter and two three-meter Dura (Maxi) Flex boards. The SERF (pictured above) features an indoor long course pool with movable bulkheads that more than double the program's training space.*



*The Goodman Brothers Softball Complex on the west end of the UW campus opened during the spring of 1999. The facility has an NCAA-regulation, natural grass field with a centerfield distance of 225 feet, and left and right field foul line distances of 200 feet. The facility includes dugouts, locker areas, players' lounge, grandstand seating for 1,600 and media facilities.*



*Left: The outdoor track and soccer complex, which is fully lighted, is located on the west end of the UW campus. The track features a 400-meter Martin rubber surface with throwing and jumping areas in the infield. The soccer field is Olympic size and has natural grass. Plans are in the works for building permanent seating with locker rooms*



# Wisconsin Traditions



## Badger Nickname

The sports program's nickname "Badgers," was borrowed from the state of Wisconsin. The territory was dubbed the "Badger State," not because of animals in the region, but rather by an association with lead miners in the 1820's. Prospectors came to the state looking for minerals. Without shelter in the winter, the miners had to "live like Badgers" in tunnels burrowed into hillsides.

## Bucky Badger

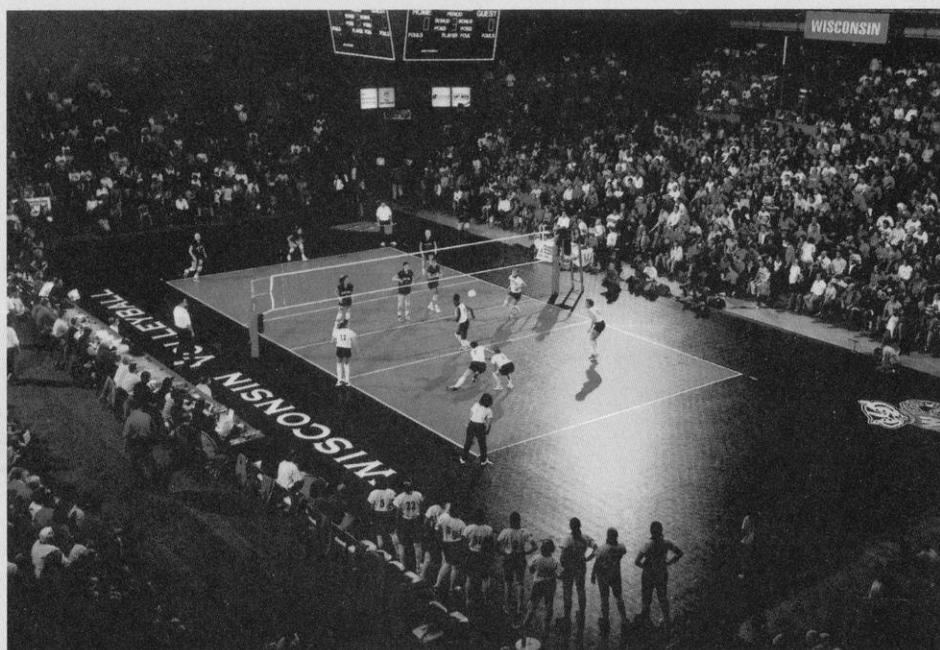
Although badgers in various forms had been the University of Wisconsin mascot for decades, the version that is currently known as Bucky, sporting a cardinal and white sweater, was first drawn in 1940 by professional illustrator Art Evans.

The original badger mascot was too vicious to control. On more than one occasion, the live badger escaped handlers before a sideline hero recaptured the animal. It was decided in the interest of fan and player safety that Wisconsin's mascot would be retired to the Madison zoo.

In 1949, a student in the university's art department, Connie Conrad, was commissioned to mold a paper-mache badger head. Gymnast and cheerleader, Bill Sagal of Plymouth, Wis., was directed by homecoming chair Bill Sachse, to wear the outfit at the homecoming game. A pep rally was held to determine the mascot's name. The rally committee opted for its own name: Buckingham U. Badger. The name is said by



"Buckingham U. Badger" is a familiar figure at all University of Wisconsin athletic events.



Young Badger fans show their Wisconsin spirit.

some to have originated in a line from "On, Wisconsin" that exhorts the UW gridiron heroes to "buck right through that line."

## "On Wisconsin"

The tune was composed in 1909 by William Purdy of Chicago, with the words written by UW alumnus Carl Beck, who rewrote them in 1951. The song was an instant hit at the Wisconsin campus and soon spread throughout the world, being very popular with military bands. Some 2,500 schools and colleges have adopted the music and changed the words to suit their needs.

## Varsity

The traditional arm waving that comes at the end of the song "varsity" was the 1934 brainchild of then-UW band leader Ray Dvorak. He had originally gotten the idea from University of Pennsylvania students who waved their caps after a losing game. Dvorak later instructed UW students to wave as a salute to UW President Glenn Frank.

## Fifth Quarter

The Wisconsin band has become nationally famous for its post-game celebration called the Fifth Quarter. Win or lose, fans sing, dance and cheer the band as they play traditional favorites like "On,

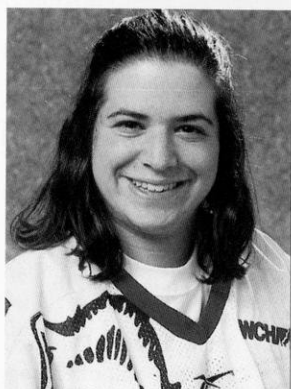
Wisconsin" and the Bud song. Originally, the post-game concert was designed to give fans something to listen to on their way out of the stadium, but it developed into a post-game party as the band built in audience participation.

## Bud Song

An integral part of any Wisconsin band performance is the playing of the Bud song. The tune is a spinoff of the song "You've said it all," a jingle with words and music originally written by Steve Karen for Budweiser beer commercials. Copyrighted by Sandlee Publishing Corporation in 1970, the song has become legendary at the University because of its polka-like rhythm. Band director Michael Leckrone said the song's popularity got started at a 1975 hockey game. "The crowd wanted to hear a polka," he said. "I didn't have any polkas. Just by accident, we had this beer commercial in the tunes we play. I told the band if we substituted the word 'Wisconsin' for 'Budweiser' it would work."

Leckrone said the song became a football tradition after a 1978 come-from-behind victory over Oregon. "Wisconsin was behind by three touchdowns, and the crowd was really dead. I played the song to get everyone pepped up. About 20 seconds after that, Wisconsin scored a touchdown. I played it again, and Wisconsin scored another touchdown. From then on, the band could never play enough 'Bud.'"

sophomore ... earned two letters in cross country, one in tennis ... named cross country's Rookie of the Year her freshman season ... National Honor Society Treasurer ... **Personal:** Parents are Alice and Dr. Charles Schmitt ... born 6-12-81 ... major is undeclared



## 20 Natascha Sherman

**Senior/Junior • 5-0**

**Forward**

**Seattle, WI/Northfield Mount Hermon**

UW Club hockey player ... **Prep:** Four-year starter in ice hockey ... two-time captain ... won the Northfield Mount Hermon Coaches' Award as a senior ... named Freshman Athlete of the Year ... played for the 1996 Alaska Firebirds that were USA Hockey National Champions for girl's 18-and-under ... four-year starter on softball team ... team won New England Championship as a senior ... scored the game-winning run in the championship game ... named to NEPSAC All-Tournament Team as a junior ... also named a NEPSAC and Boston Globe All-Star for her junior-year performance ... spent two years as sports editor of the school newspaper ... **Personal:** Parents are Emily and Ken Sherman ... born 11-22-77 ... majors are Chinese and international relations



## 6 Roberta Shufeldt

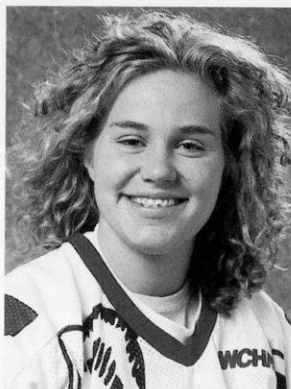
**Senior/Junior • 5-3**

**Defenseman**

**Romulus, MI/Woodhaven**

**University of New Hampshire**

Last team was the O'Leary Hawks ... Played at the University of New Hampshire from 1996—1998 ... helped UNH to the 1997—98 American Women's Collegiate Hockey Association National Championship ... both her 1996—97 and 1997—98 teams finished second in the ECAC ... Attended Oakland Community College during 1998—99 ... **Prep:** Captained tennis team for two years ... earned two letters in softball ... lettered in cross country as a freshman ... captained Little Ceasars ice hockey team her freshman year ... **Personal:** Parents are Jackie and Dave Shufeldt ... born 6-21-78 ... occupational therapy major.



## 10 Michelle Sikich

**Sophomore • 5-5**

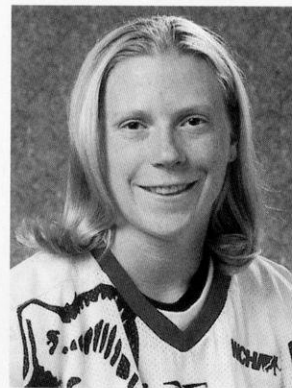
**Defenseman**

**Apple Valley, MN/Apple Valley**

**Minnesota State University, Mankato**

Transferred from Minnesota State University, Mankato ... led team with 21 goals, 18 assists for 31 points ... team cap-

tain ... shared national lead with four short-handed tallies ... ranked nationally in six other categories ... tied for 12th with four game-winning goals ... tied for 15th with six power-play goals ... scored 1.34 points per game to tie for 18th ... her 0.62 goals per game was good for 19th ... tied for 20th in goals (18) and assists per game (0.72) ... **Prep:** Four-time all-state selection ... helped Apple Valley to first-ever Minnesota High School Girl's Hockey Championship in 1995 ... also won state title in 1998 ... named to all-tournament team for 1998 title run ... two-time captain ... had 93 points on 48 goals and 45 assists as a senior ... finished career with 170 goals, 110 assists and 280 points in 110 games ... two-time team MVP ... led team in scoring her junior and senior years ... two-time participant in USA Junior National Camp ... ran two years on track team, one on cross country team ... played volleyball as a freshman and sophomore ... won Athena Award for school's outstanding student-athlete ... member of the National Honor Society ... **Personal:** Parents are Patsy and Chris Sikich ... born 11-13-79 ... major is physics and secondary education



## 23 Leslie Toner

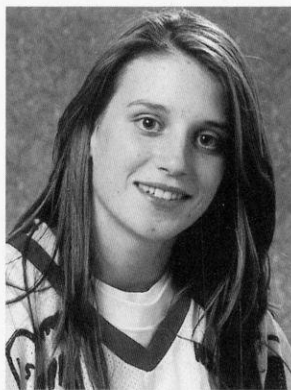
**Sophomore/Freshman • 5-7**

**Forward**

**Wausau, WI/West**

**Prep:** First girl to play varsity hockey on Wausau West's boy's team ... played freshman and sophomore years with West ... played junior and senior year for Wisconsin Challengers ... team competed in national tournament both years ... four-time letter-winner in soccer ... three-time all-conference player ... captained the team as a senior ... member of the National Honor Society ... graduated in the top-10% of her class ... **Personal:** Parents are Linda and Bernie Toner ... born 9-25-79 ... major is undeclared





## 14 Kerry Weiland

**Freshman • 5-4  
Defenseman  
Palmer, AK/Palmer**

**Prep:** Played for Palmer High's boys team ... as a sophomore, became first-ever girl to earn first-team all-region honors in Alaska prep history ... also named first team as a senior and second team as a junior ... captained team senior year and was assistant captain her junior year ... garnered team's most inspirational player award during her first three seasons ... won the regional shootout competition during junior campaign ... participated at two Olympic Development Camps ... member of Team California's 19-and-Under Women's team that finished second at 1998 USA Hockey Women's National Championships ... led team in tourney with three goals ... plays wing for Firebird club team which she captained from 1995—1999 ... selected to play in the 1999 U.S. Women's Hockey Festival ... **Personal:** Parents are Teri and Terry Weiland ... born 10-18-80 ... major is undeclared

## The Patty Kazmaier Memorial Award

An award of The USA Hockey Foundation, The Patty Kazmaier Memorial Award recognizes the accomplishments of the most outstanding player in women's intercollegiate varsity ice hockey each season.

The recipient of the award is chosen by an 11-member selection committee comprised of women's intercollegiate varsity ice hockey coaches, representatives of the print and broadcast media, and a representative of USA Hockey. Candidates for the award must compete for a women's intercollegiate varsity ice hockey team at an NCAA-member institution. Other selection criteria include outstanding individual and team skills, sportsmanship, performance in the "clutch", personal character, competitiveness and a love of hockey. Consideration is also given to academic achievement and civic involvement. The top 10 candidates will be announced early in 2000, with the three finalists announced in March.

An accomplished athlete who excelled in ice hockey, field hockey and lacrosse, Patty Kazmaier was a four-year varsity letter-winner for the Princeton University women's ice hockey team from 1981–82 through 1983–84. She helped lead Princeton to the Ivy League Championship in three consecutive seasons (1981–82 through 1983–84) while anchoring the team's defense.

Kazmaier earned all-Ivy League honorable mention honors as a freshman and was named to the all-Ivy League second team in both her sophomore and junior seasons. Following a leave of absence from Princeton University in 1984–85, Kazmaier was named to the all-Ivy League first team and the all-Eastern College Athletic Conference first team as a senior in 1985–86. She was also honored as the Ivy League Most Valuable Player. Kazmaier graduated from Princeton in 1986 with a bachelor's degree in religion.

Following a long battle with a rare blood disease, Patty Kazmaier-Sandt died on Feb. 15, 1990, at the age of 28. She is survived by her husband, Mark J. Sandt; a daughter, Serena K. Sandt; her parents, Richard W. and Patricia H. Kazmaier; and her sisters Michele Kazmaier, Kimberly Eakin, Susan Kazmaier, Kathy Donnelly and Kristen Kazmaier.

Athletic excellence ran in the Kazmaier family, as her sister, Kathy, played college ice hockey at the University of New Hampshire and her father, Richard

Kazmaier, also a graduate of Princeton University, won the Heisman Trophy in 1951, beating out Pro Football Hall of Famer Frank Gifford.

The Patty Kazmaier Memorial Award was custom-designed and crafted for The USA Hockey Foundation by Tiffany & Co. Tiffany's heritage of marking excellence in sports dates back more than a century, when the firm created exceptional trophies for prestigious yachting and equestrian events. The Patty

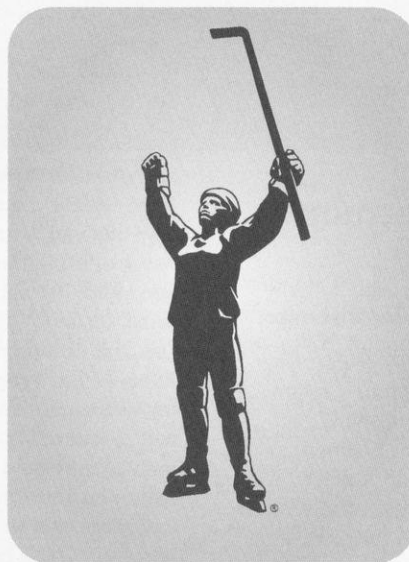
Kazmaier Memorial

Award joins some of the world's most coveted symbols: the National Football League's Vince Lombardi Super Bowl Trophy; the National Basketball Association's Larry O'Brien Championship Trophy and the WNBA Championship Trophy; and the trophies for the United States Open Tennis Championship as unique Tiffany & Co. designs.

A truly exceptional individual, Patty Kazmaier's achievements in life and in sport will serve as an inspiration for all women who play intercollegiate ice hockey now and in the future.

**The award is in its third year of existence. The previous winners are:**

1998	Brandy Fisher	New Hampshire
1999	A.J. Mlecko	Harvard





# UW Hockey Highlights

## NCAA Championships

In winning five NCAA Championships, the Wisconsin men's ice hockey program has proved itself to be one of the elite in college hockey. The UW ranks third in the collegiate hockey community along with Denver for most national titles won in the history of the NCAA. The Badgers won its first national crown in 1973 and followed by titles in 1977, 1981, 1983 and 1990.

## NCAA Appearances

The Badgers have appeared in 17 NCAA Championships and have been in the NCAA Frozen Four 10 times. In its first national championship appearance in 1970, Wisconsin finished third at the NCAA Championship.

## Attendance Leaders

Fans of Wisconsin ice hockey continually show their support in mass. The Badgers have led the nation in attendance for nearly 25 years averaging close to 8,500 spectators per game at the Dane County Coliseum. That average has skyrocketed the past two seasons as the men made the move to the Kohl Center, which seats 14,385 people for hockey.

## Legendary Coaches

Wisconsin men's ice hockey has been fortunate enough to have two legendary coaches in its ranks.

Bob Johnson coached at Wisconsin for 15 years and compiled a 367-175-23 record. He is the winningest coach in UW history with a .670 winning percentage. Johnson also coached the 1976 U.S. Olympic Team in Innsbruck, Austria, as well as coaching the 1973, 1974, 1975 and 1981 U.S. National Teams. In honor to his lifelong service to hockey, USA Hockey has dedicated "Bob Johnson Drive" in Colorado Springs.

Jeff Sauer, the current coach of the Badger men's team, is considered by many in the hockey community to be one of the greatest mentors of all time. Sauer is the winningest coach in WCHA history with 586 career wins and ranks fifth on the NCAA's all-time win list. Sauer, in his 29th year as a collegiate coach and 18th with UW, has guided his team's to a pair of NCAA titles (1983, 1990), 10 NCAA appearances, a WCHA title in 1990 and five WCHA Playoff Titles.

## All-Americans

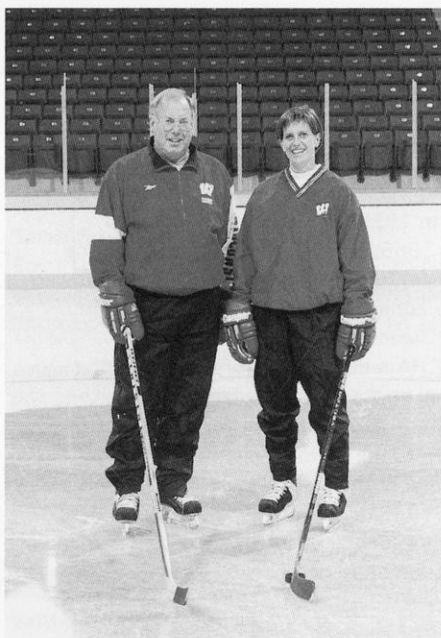
Badger players have earned 29 all-American honors since 1970, the most of any school in the WCHA. John Jagger was the first all-American at UW, earning the honor in 1970. Three players in Wisconsin history have two first-team all-America accolades in Craig Norwich, Mike Eaves and Mark Johnson.

## Badgers in the Pros

The Badgers have had 28 players go on to play in the National Hockey League, and 12 that are currently on a NHL roster. Chris Chelios, one of the most notable former Badgers, has had great success in the NHL as a nine-time All-Star and three-time Norris Trophy Winner. Curtis Joseph is one of the NHL's top goaltenders. He guided the Edmonton Oilers into the Stanley Cup playoffs in 1997-98.

## Olympians

Wisconsin has had 17 of its players have the highest distinction of representing their country in Olympic play since 1976. Bob Lundeen was one of the first UW Olympians, playing on the 1976 US team. Mark Johnson and Bob Suter were members of the 1980 gold medal-winning U.S. Olympic Team in Lake Placid, N.Y. Johnson was the team's leading scorer with five goals and six assists for 11 points.



**Women's head coach Julie Sasner inherits the tradition of the Wisconsin men's program, with some help from men's head coach Jeff Sauer.**

## Women's History

The University of Wisconsin added women's hockey as an intercollegiate sport to begin play in 1999-2000, though women's hockey has a long-standing history at the UW.

The women's hockey club has been on the Madison campus for over 25 years. It was founded in 1973 by three women: Marianne (Anderson) Larson, Jill Steinberg and Karen Schwarz. The UW Women's Hockey Club has had hundreds of players take to the ice throughout the years.

The three founders of the club put up signs throughout campus and once they had enough "regulars", they applied for Club Sport status. During the early years, they recruited players by putting up tables during spring and fall registration. In 1976, the group scheduled its first competitive game against the University of Minnesota club team.

One important source on campus provided the critical encouragement and support to the club: men's head coach Bob Johnson. Johnson was instrumental in getting the club interviewed during radio broadcasts of the men's games. With his support, they also arranged to play some games at the Coliseum immediately after the men's team played.

In 1991 interest in the sport had increased dramatically, causing the club to expand to two teams, A and C. Also in 1991, peewee girls from throughout Madison currently skating with boys' teams formed a new team of girls, the Wisconsin Challengers. The team soon formed a midget squad as well.

Interest continues to explode each season and the Wisconsin Recreation Department now sponsors three club teams. The A team travels throughout the Midwest competing against other club programs. The current club teams, A, B, and C, will continue to play when the varsity team begins action in the fall of 1999. The city of Madison is fortunate to have five rinks and a wealth of enthusiasm for the sport of hockey.





# WCHA Women's League



## New Women's League Formed by WCHA

April 29, 1999

MARCO ISLAND, Fla. -- In an historic vote, the Western Collegiate Hockey Association established a new women's league at its 1999 annual meeting in Marco Island, Florida.

The unanimous vote followed a year-long planning process.

"This is indeed a significant development for the WCHA", said Darrell Smith, Chair of the Association and Faculty Representative from Michigan Tech University. "We are all looking forward to playing a major role in the continuing evolution and development of women's ice hockey at all levels and the opportunity to build on, and add to, the great history and tradition of the Western Collegiate Hockey Association."

Inaugural members of the WCHA women's league are Minnesota State University, Mankato; University of Minnesota; University of Minnesota-Duluth; St. Cloud State University; and University of Wisconsin. In addition, Bemidji State University and Ohio State University have been invited to join the womens league.

The women's league will begin play for the 1999-2000 season and will include a 24-game conference schedule and a year-end league tournament.

## WCHA History

The Western Collegiate Hockey Association, or WCHA, is the oldest of the Division I college hockey leagues recognized by the NCAA. It was formed in 1959 as an outgrowth of two earlier western college associations, the Midwest Intercollegiate Hockey League and the Western Intercollegiate Hockey League.

The Midwest Intercollegiate Hockey League, the first version of the WCHA, was founded in 1951 by Colorado College, Denver, Michigan, Michigan State, Michigan Tech, Minnesota and North Dakota. The league changed its name to the WIHL in 1953 to better reflect the location of its members.

Throughout the 1950s, the WIHL was very successful in winning NCAA championships. Except for 1949 and 1954, all of the NCAA crowns were won by the WIHL teams. Michigan alone won six titles.

There was no conference play during the 1958—59 season, but the league began play again in 1959 with the WCHA moniker.

In 1966, Minnesota-Duluth became the first team to be added to the league, followed by the addition of Wisconsin in 1969 and Notre Dame in 1971.

WCHA members captured most of the national hockey championships during the 1960s and 1970s. Except for 1967, 1971—72 and 1978, the national champion trophy remained in the display case of a WCHA team.

In 1981, Michigan, Michigan State, Michigan Tech and Notre Dame resigned and joined the more compact Central Collegiate Hockey Association. In 1984, the WCHA reclaimed Michigan Tech and welcomed Northern Michigan from the CCHA.

The 1986—87 season saw the University of North Dakota won the NCAA title. In 1989—90, the Wisconsin Badgers put the

WCHA back on top by sweeping to the WCHA and NCAA Championships with a 36-9-1 record.

With the 1990—91 campaign, the league added a new member in St. Cloud State. In 1992, the membership voted to accept the University of Alaska Anchorage as a full-time member beginning with the 1993—94 season.

After ten distinguished years as the guiding force behind the success of the WCHA, Otto Breitenbach retired as commissioner. at the end of the 1993—94 season. Named as his successor was Bruce McLeod, a major contributor to the league over the years, and a former UMD Bulldog hockey player.

In 1996—97, North Dakota won the most recent national championship for the WCHA with a 6-4 win over Boston University in Milwaukee. The championship gave the conference its 30th national team championship.

Following the 1996—97 season, Northern Michigan left the WCHA to rejoin the CCHA. Minnesota State University, Mankato fills the void beginning with the 1999—2000 season.

The 1999—2000 season also marks the first year for the WCHA-Women's League. Bemidji State, Minnesota, Minnesota-Duluth, MSU-Mankato, Ohio State, St. Cloud State and Wisconsin make up the charter membership. To serve this new arm of the league, Sara Martin was hired in June of 1999 as the Associate Commissioner. Martin, who earned college degrees from Wisconsin and MSU-Mankato, served the WCHA as tournament director for the 1994, 1996 and 1998 WCHA Final Five Playoff Championships, and was tournament for the 1997 NCAA Div. I Men's Ice Hockey Championship.

# WCHA Composite Schedule



## Friday, October 8

Minnesota-Duluth at Wisconsin 7:05 pm

## Saturday, October 9

Minnesota-Duluth at Wisconsin 7:05 pm

## Friday, October 15

St. Cloud State at Minnesota 7:05 pm

Wisconsin at Ohio State 7:00 pm

## Saturday, October 16

Minnesota at St. Cloud State 3:05 pm

Wisconsin at Ohio State 4:00 pm

## Friday, October 22

Bemidji State at Minnesota-Duluth 7:05 pm

Ohio State at St. Cloud State 7:05 pm

## Saturday, October 23

Bemidji State at Minnesota-Duluth 7:05 pm

Ohio State at St. Cloud State 3:05 pm

## Friday, October 29

Wisconsin at St. Cloud State 7:05 pm

Minnesota at Northeastern 7:00 pm

## Saturday, October 30

Wisconsin at St. Cloud State 3:05 pm

Ohio State at Minnesota-Duluth 2:05 pm

## Sunday, October 31

Ohio State at Minnesota-Duluth 1:05 pm

## Friday, November 5

Minnesota-Duluth at St. Cloud State 7:05 pm

## Saturday, November 6

Minnesota-Duluth at St. Cloud State 3:05 pm

## Friday, November 12

Minnesota at Ohio State 7:00 pm

St. Cloud State at MSU, Mankato 2:05 pm

## Saturday, November 13

Bemidji State at Wisconsin (Eau Claire, WI)

3:05 pm

Minnesota at Ohio State 7:00 pm

St. Cloud State at MSU, Mankato 2:05 pm

## Sunday, November 14

Bemidji State at Wisconsin (Eau Claire, WI)

3:05 pm

## Friday, November 19

Minnesota at Wisconsin 7:05 pm

MSU, Mankato at Minnesota-Duluth 8:05 pm

## Saturday, November 20

Ohio State at Bemidji State 7:05 pm

Minnesota at Wisconsin 7:05 pm

MSU, Mankato at Minnesota-Duluth 7:05 pm

## Tuesday, November 23

MSU, Mankato at Minnesota 7:05 pm

## Saturday, November 27

Bemidji State at MSU, Mankato 2:05 pm

## Sunday, November 28

Bemidji State at MSU, Mankato 2:05 pm

## Friday, December 3

Minnesota-Duluth at Minnesota 7:05 pm

MSU, Mankato at Wisconsin 7:05 pm

## Saturday, December 4

Minnesota-Duluth at Minnesota 7:05 pm

MSU, Mankato at Wisconsin 7:05 pm

## Friday, December 10

St. Cloud State at Bemidji State 3:05 pm

Ohio State at MSU, Mankato 2:05 pm

## Saturday, December 11

St. Cloud State at Bemidji State 3:05 pm

Ohio State at MSU, Mankato 2:05 pm

## Friday, December 17

St. Cloud State at Minnesota-Duluth 7:05 pm

## WCHA MEDIA ROW TELEPHONES

BEMIDJI STATE (218) 755-3700

MINNESOTA (612) 626-0844

MSU, MANKATO (507) 389-3000

UM-DULUTH (218) 727-7939

OHIO STATE (614) 688-0658

ST. CLOUD STATE (320) 654-5227

WISCONSIN (608) 265-2666

## Saturday, December 18

St. Cloud State at Minnesota-Duluth 7:05 pm

## Monday, January 10

Minnesota at Bemidji State 7:05 pm

## Tuesday, January 11

Minnesota at Bemidji State 7:05 pm

## Friday, January 14

Bemidji State at Ohio State 7:00 pm

Minnesota at MSU, Mankato 2:05 pm

Wisconsin at Minnesota-Duluth 7:05 pm

## Saturday, January 15

Bemidji State at Ohio State 4:00 pm

Minnesota at MSU, Mankato 2:05 pm

Wisconsin at Minnesota-Duluth 7:05 pm

## Friday, January 21

Bemidji State at Minnesota 7:05 pm

## Saturday, January 22

Bemidji State at Minnesota 7:05 pm

Ohio State at Wisconsin 1:05 pm

## Sunday, January 23

Ohio State at Wisconsin 1:05 pm

## Friday, January 28

Wisconsin at Bemidji State 7:05 pm

Minnesota-Duluth at Ohio State 7:00 pm

MSU, Mankato at St. Cloud State 7:05 pm

## Saturday, January 29

Wisconsin at Bemidji State 7:05 pm

Minnesota-Duluth at Ohio State 7:00 pm

MSU, Mankato at St. Cloud State 3:05 pm

## Friday, February 4

MSU, Mankato at Bemidji State 7:05 pm

Ohio State at Minnesota 7:05 pm

## Saturday, February 5

MSU, Mankato at Bemidji State 2:05 pm

Ohio State at Minnesota 7:05 pm

St. Cloud State at Wisconsin 1:05 pm

## Sunday, February 6

St. Cloud State at Wisconsin 1:05 pm

## Tuesday, February 8

MSU, Mankato at Minnesota 7:05 pm

## Friday, February 11

Bemidji State at St. Cloud State 7:05 pm

Minnesota at Minnesota-Duluth 7:05 pm

Wisconsin at MSU, Mankato 2:05 pm

## Saturday, February 12

Bemidji State at Ohio State 3:05 pm

Minnesota at Minnesota-Duluth 7:05 pm

Wisconsin at MSU, Mankato 2:05 pm

## Friday, February 18

St. Cloud State at Minnesota 7:05 pm

MSU, Mankato at Ohio State 7:00 pm

## Saturday, February 19

Minnesota-Duluth at Bemidji State 2:05 pm

Minnesota at St. Cloud State 3:05 pm

MSU, Mankato at Ohio State 7:00 pm

## Sunday, February 20

Minnesota-Duluth at Bemidji State 2:05 pm

## Friday, February 25

Minnesota-Duluth at MSU, Mankato 2:05 pm

St. Cloud State at Ohio State 7:00 pm

## Saturday, February 26

Wisconsin at Minnesota 2:05 pm

Minnesota-Duluth at MSU, Mankato 2:05 pm

St. Cloud State at Ohio State 7:00 pm

## Sunday, February 27

Wisconsin at Minnesota 2:05 pm

## Thursday, March 2

WCHA Championships, Bloomington, MN

## Friday, March 3

WCHA Championship, Bloomington, MN

## Saturday, March 4

WCHA Championship, Bloomington, MN

## Friday, March 24

AWCHA National Championship TBA

## Saturday, March 25

AWCHA National Championship TBA



# WCHA Opponents

## Bemidji State University

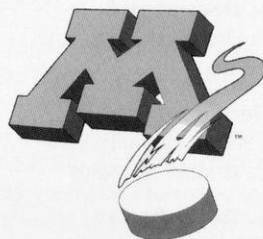


**Friday-Saturday, Nov. 13-14  
at Eau Claire, WI  
—3:05 p.m.**

**Friday-Saturday, Jan. 28-29  
at Bemidji, MN  
—7:05 p.m.**

Location: Bemidji, MN  
Founded: 1919  
Enrollment: 4,800  
Nickname: Beavers  
Colors: Green and White  
Conference: WCHA  
President: Dr. James Benson  
Athletic Director-Hockey: R.H. "Bob" Peters  
Arena: John S. Glas Fieldhouse  
Capacity: 2,500  
Rink Size: 200' x 85'  
Press Box Phone: (218) 755-3700  
Hockey SID: Ron Christian  
SID Office Phone: (218) 755-2763  
SID Home Phone: (218) 755-1068  
SID Fax Phone: (218) 3898  
SID Email:  
bsusports@vax1.bemidji.msus.edu  
Website:  
www.info.bemidji.msus.edu/sports  
SID Mailing Address:  
Bemidji State University  
1500 Birchmont NE  
Bemidji, MN 56601  
1998-99 Record: 2-20-0  
Conference Record/Finish: N/A  
Head Coach: Ruthann Cantile  
Alma Mater (Year): Western Michigan(1997)  
Overall Record: 2-20-0 (1 year)  
Record at School: 2-20-0 (1 year)  
Hockey Office Phone: (218) 755-4108  
Assistant Coaches:  
Scott Dockett  
Kevin Williamson  
Letterwinners Returning/Lost: 6/12  
Top Returning Players:  
Jessica Bina, So., F, 11g, 5a  
Kirstin Peahl, So., D, 4g, 3a  
Jen Retka, So., F, 5g, 2a

## University of Minnesota



**Friday-Saturday, Nov. 19-20  
at Madison, WI  
—7:05 p.m.**

**Friday-Saturday, Feb. 26-27  
at Minnesota, MN  
—2:05 p.m.**

Location: Minneapolis, MN  
Founded: 1851  
Enrollment: 39,900  
Nickname: Golden Gophers  
Colors: Maroon and Gold  
Conference: WCHA  
President: Mark Yudof  
Athletic Director: Chris Voelz  
Arena: Mariucci Arena  
Capacity: 9,700  
Rink Size: 200' x 100'  
Press Box Phone: (612) 626-0844  
Hockey SID: Craig Roberts  
SID Office Phone: (612) 624-0522  
SID Home Phone: (651) 407-9292  
SID Fax Phone: (612) 624-8018  
SID Email: rober080@tc.umn.edu  
Website: www.gophersports.com  
SID Mailing Address:  
516 15th Ave. SE  
220 Bierman Building  
Minneapolis, MN 55455  
1998-99 Record: 29-4-3  
Conference Record/Finish: N/A  
Head Coach: Laura Halldorson  
Alma Mater (Year): Princeton (1985)  
Overall Record: 109-86-15 (9 years)  
Record at School: 50-11-6 (2 years)  
Hockey Office Phone: (612) 626-1770  
Assistant Coaches:  
Libby Witchger (Brown, 1996)  
David Horn (Western Washington, 1988)  
Letterwinners Returning/Lost: 19/3  
Top Returning Players:  
Kris Scholz, Jr., RW, 17g, 35a  
Nadine Muzerall, Jr., RW, 30g, 18a  
Erica Killewald, Jr., G, 1.24 gaa, .947 save %

## Minnesota-Duluth



**Friday-Saturday, Oct. 8-9  
at Madison, WI  
—7:05 p.m.**

**Friday-Saturday, Jan. 14-15  
at Duluth, MN  
—7:05 p.m.**

Location: Duluth, MN  
Founded: 1895  
Enrollment: 7,800  
Nickname: Bulldogs  
Colors: Maroon and Gold  
Conference: WCHA  
President: Dr. Kathryn Martin  
Athletic Director: Dr. Robert Corran  
Arena: Duluth Entertainment and Convention Center  
Capacity: 5,333  
Rink Size: 190' x 85'  
Press Box Phone: (218) 727-7939  
Hockey SID: Ira Kemell  
SID Office Phone: (218) 726-8191  
SID Home Phone: (218) 724-2681  
SID Fax Phone: (218) 726-6529  
SID Email: ikemell@d.umn.edu  
Website: www.umdbulldogs.com  
SID Mailing Address:  
University of Minnesota-Duluth  
10 University Drive  
Duluth, MN 55812  
1998-99 Record: N/A  
Conference Record/Finish: N/A  
Head Coach: Shannon Miller  
Alma Mater (Year): Saskatchewan (1985)  
Overall Record: First year  
Record at School: First year  
Hockey Office Phone: (218) 726-8164  
Assistant Coaches:  
Stacy Wilson (Acadia, 1987)  
Shawna Davidson (New Hampshire, 1992)  
Manon Rheume  
Letterwinners Returning/Lost: N/A  
Top Returning Players: N/A

## Minnesota State, Mankato



**Friday-Saturday, Dec. 3-4  
at Madison, WI  
—7:05 p.m.**

**Friday-Saturday, Feb. 11-12  
at Mankato, MN  
—2:05 p.m.**

Location: Mankato, MN  
Founded: 1868  
Enrollment: 12,380  
Nickname: Mavericks  
Colors: Purple and Gold  
Conference: WCHA  
President Dr. Richard Rush  
Athletic Director: Don Amiot  
Arena: Midwest Wireless Center  
Capacity: 4,832  
Rink Size: 200' x 100'  
Press Box Phone: (507) 389-3000  
Hockey SID: Shane Drahota  
SID Office Phone: (507) 389-2625  
SID Home Phone: (507) 389-8974  
SID Fax Phone: (507) 389-1923  
SID Email:  
shane.drahota@mankato.msus.edu  
Website:  
www.mankato.msus.edu/dept/athletics  
SID Mailing Address:  
Office of Intercollegiate Athletics  
123 Highland Center  
Mankato, MN 56001  
1998-99 Record: 14-15  
Conference Record/Finish: N/A  
Head Coach: Todd Carroll  
Alma Mater (Year): St. Olaf (1986)  
Overall Record: 14-15-0 (1 year)  
Record at School: 14-15-0 (1 year)  
Hockey Office Phone: (507) 389-  
Assistant Coaches:  
Amanda Adams (Yale, 1997)  
Chris Hvinden (MSU, Mankato, 1998)  
Letterwinners Returning/Lost: 19/3  
Top Returning Players:  
Cara Samuelson, So., F, 13g, 17a  
Jenny Padgett, So., G, 3.99 gaa, .877 save %

## Ohio State University



**Friday-Saturday, Oct. 15-16  
at Columbus, OH  
—7 p.m./4 p.m. EST**

**Saturday-Sunday, Jan. 22-23  
at Madison, WI  
—1:05 p.m.**

Location: Columbus, OH  
Founded: 1870  
Enrollment: 48,300  
Nickname: Buckeyes  
Colors: Scarlet and Gray  
Conference: WCHA  
President: William E. Kirwan  
Athletic Director: Andy Geiger  
Arena: OSU Ice Arena  
Capacity: 1,415  
Rink Size: 200' x 85'  
Press Box Phone: (614) 688-0658  
Hockey SID: Anglea Russo  
SID Office Phone: (614) 292-6861  
SID Home Phone: (614) 575-0411  
SID Fax Phone: (614) 292-8547  
SID Email: N/A  
Website: ohiostatebuckeyes.com  
SID Mailing Address:  
Athletic Communications  
Room 124  
410 Woody Hayes Drive  
Columbus, OH 43210-1166  
1998-99 Record: N/A  
Conference Record/Finish: N/A  
Head Coach: Jackie Barto  
Alma Mater (Year): Providence (1984)  
Overall Record: 83-63-11  
Record at School: First year  
Hockey Office Phone: (614) 292-7073  
Assistant Coaches:  
Kevin Cunningham (Connecticut  
College, 1984)  
Susan Kempf (Providence, 1987)  
Letterwinners Returning/Lost: N/A  
Top Returning Players: N/A

## St. Cloud State University



**Friday-Saturday, Oct. 29-30  
at St. Cloud, MN  
—7:05 p.m./3:05 p.m.**

**Saturday-Sunday, Feb. 5-6  
at Madison, WI  
—1:05 p.m.**

Location: St. Cloud, MN  
Founded: 1869  
Enrollment: 15,000  
Nickname: Huskies  
Colors: Cardinal and Black  
Conference: WCHA  
Interim President: Dr. Suzanne Williams  
Athletic Director: Dr. Morris Kurtz  
Arena: National Hockey Center  
Capacity: 6,000  
Rink Size: 200' x 100'  
Press Box Phone: (320) 654-5227  
Hockey SID: Anne Abicht  
SID Office Phone: (320) 255-2141  
SID Home Phone: (320) 253-4330  
SID Fax Phone: (320) 255-2099  
SID Email: aabicht@stcloudstate.edu  
Website:  
www.StCloudState.edu/~sports/sports.html  
SID Mailing Address:  
259-1 Halenbeck Hall 259-1  
720 4th Ave. S.  
St. Cloud, MN 56301-4498  
1998-99 Record: 8-12-2  
Conference Record/Finish: N/A  
Head Coach: Kerry Brodt  
Alma Mater (Year): St. Cloud State (1995)  
Overall Record: 8-12-2 (1 year)  
Record at School: 8-12-2 (1 year)  
Hockey Office Phone: (320) 255-4806  
Assistant Coaches:  
David Prokop (Concordia-Moorhead)  
Letterwinners Returning/Lost: 8/15  
Top Returning Players:  
Gina Grasso, So., F  
Natalie Nygrem, So., F,  
Tara McNamara, So., D



# Non-Conference Opponents

## Brown University



**Sunday, Nov. 7  
at Madison, WI  
—1:05 p.m.**

Location: Providence, RI  
Founded: 1764  
Enrollment: 5,722  
Nickname: Bears  
Colors: Seal Brown, Cardinal Red, White  
Conference: ECAC, Ivy League  
President: E. Gordon Gee  
Athletic Director: David T. Roach  
Arena: Meehan Auditorium  
Capacity: 3,100  
Rink Size: 200' x 85'  
Press Box Phone: (401) 863-3507/3518  
Hockey SID: Beth James  
SID Office Phone: (401) 863-2219  
SID Home Phone: (401) 421-6133  
SID Fax Phone: (401) 863-1436  
SID Email: Elizabeth\_James@Brown.edu  
Website: www.BrownBears.com  
SID Mailing Address:  
Brown University  
Hope Street  
Providence, RI 02912-0001  
1998-99 Record: 20-7-4  
Conference Record/Finish: 19-4-3/T-2nd  
Head Coach: Margaret Degidio Murphy  
Alma Mater (Year): Cornell (1983)  
Overall Record: 160-70-20 (10 years)  
Record at School: 160-70-20 (10 years)  
Hockey Office Phone: (401) 863-3704  
Assistant Coaches:  
Dawn Loomis (New Hampshire, 1988)  
Danielle Solari (Brown, 1997)  
Leterwinners Returning/Lost: 14/3  
Top Returning Players:  
Tara Mounsey, Jr., D, 14g, 24a  
Jordan Jiskra, Sr., F, 16g, 20a  
Alison Brewer, Sr., G, 1.34 GAA, .940 save %

## Concordia University



**Dartmouth Invitational  
Friday, Dec. 31  
at Hanover, NH  
—12:30 p.m. EST**

Location: Montreal, Quebec  
Founded: 1974  
Enrollment: 25,000  
Nickname: Stingers  
Colors: Maroon, Gold, Black and White  
Conference: QSSF  
Rector: Dr. Frederick H. Lowy  
Athletic Director: Harry Zarins  
Arena: Concordia Arena  
Capacity: 1,100  
Press Box Phone: (514) 848-3862  
Hockey SID: Catherine Grace  
SID Office Phone: (514) 848-3862  
SID Home Phone: N/A  
SID Fax Phone: (514) 848-8637  
SID Email: cgrace@alcor.concordia.ca  
Website: relish.concordia.ca/rec\_ath/  
Concordia\_Recreation\_and\_A.html  
SID Mailing Address:  
Dept. of Recreation & Athletics  
Concordia University  
7141 Sherbrooke St. W  
Montreal, QC H4B 1R6  
1998-99 Record: N/A  
Conference Record/Finish: N/A  
Head Coach: Les Lawton  
Alma Mater (Year): Concordia (1989)  
Overall Record: (16 years)  
Record at School: (16 years)  
Hockey Office Phone: (514) 848-3866  
Assistant Coaches:  
Julie Healy (Concordia, 1984)  
Leterwinners Returning/Lost: N/A  
Top Returning Players: N/A

## Dartmouth University



**Dartmouth Invitational  
Wednesday, Dec. 29  
at Hanover, NH  
—12:30 p.m. EST**

Location: Hanover, NH  
Founded: 1789  
Enrollment: 4,200  
Nickname: Big Green  
Colors: Dartmouth Green and White  
Conference: ECAC, Ivy League  
President: James Wright  
Athletic Director: Richard G. Jaeger  
Arena: Thompson Arena  
Capacity: 4,500  
Rink Size: 200' x 90'  
Press Box Phone: (603) 646-2468  
Hockey SID: Adam Catalano  
SID Office Phone: (603) 646-2468  
SID Fax Phone: (603) 646-1286  
SID Email: adam.catalano@dartmouth.edu  
Website: www.dartmouth.edu/~sportspub/  
SID Mailing Address:  
Sports Information  
Dartmouth College  
Hanover, NH 03755  
1998-99 Record: 16-9-5  
Conference Record/Finish: 16-5-1/T-5th  
Head Coach: Judy Parish Oberting  
Alma Mater: Dartmouth (1991)  
Overall Record: 16-9-5 (1 year)  
Record at School: 16-9-5 (1 year)  
Hockey Office Phone: (603) 646-2774  
Assistant Coach:  
Mark Hudak (West Point, 1989)  
Leterwinners Returning/Lost: 15/4  
Top Returning Players (Yr., Pos.):  
Correne Bredin, So., D/F, 8g, 24a  
Lauren Trotter, Jr., F, 13g, 16a  
Meaghan Cahill, Jr., G, 2.37 GAA, .904 save %

## Findlay University



**Friday, Oct. 22**  
**at Findlay, OH**  
**—7 p.m. EST**

Location: Findlay, OH  
 Founded: 1882  
 Enrollment: 4,106  
 Nickname: Oilers  
 Colors: Black and Orange  
 Conference: Independent  
 President: Dr. Kenneth E. Zirkle  
 Athletic Director: Steve Rackley  
 Arena: Clauss Ice Arena  
 Capacity: 1,500  
 Rink Size: 200' x 85'  
 Press Box Phone: N/A  
 Hockey SID: Troy Berry  
 SID Office Phone: (419) 424-6684  
 SID Home Phone: (419) 294-3378  
 SID Fax Phone: (419) 424-4618  
 SID Email: Berry@lucy.findlay.edu  
 Website: www.findlay.edu  
 SID Mailing Address:  
 1000 N. Main Street  
 Findlay, OH 45840-3653  
 1998-99 Record: N/A  
 Conference Record/Finish: N/A  
 Head Coach: Adam Binker  
 Alma Mater (Year): Kent State (1987)  
 Overall Record: First year  
 Record at School: First year  
 Hockey Office Phone: (419) 424-6743  
 Assistant Coaches:  
 Michelle Donlon (Vermont, 1997)  
 Letterwinners Returning/Lost: N/A  
 Top Returning Players: N/A

## Harvard University



**Friday, Nov. 5**  
**at Middleton, WI**  
**—7:30 p.m.**

Location: Cambridge, MA  
 Founded: 1636  
 Enrollment: 6,704  
 Nickname: Crimson  
 Colors: Crimson, Black and White  
 Conference: ECAC, Ivy League  
 President: Neil L. Rudenstine  
 Athletic Director: William J. Cleary  
 Arena: Bright Hockey Center  
 Capacity: 2,850  
 Rink Size: 204' x 87'  
 Press Box Phone: (617) 495-3775  
 Hockey SID: Pete Guiney  
 SID Office Phone: (617) 495-2206  
 SID Fax Phone: (617) 495-2130  
 SID Email: pguiney@fas.harvard.edu  
 Website: www.harvardhockey.org  
 SID Mailing Address:  
 Murr Center  
 65 North Harvard Street  
 Boston, MA 02163  
 1998-99 Record: 33-1-0  
 Conference Record/Finish: 24-1-1/1st  
 Head Coach: Katey Stone  
 Alma Mater (Year): New Hampshire (1989)  
 Overall Record: 78-63-3 (6 years)  
 Record at School: 78-63-3 (6 years)  
 Hockey Office Phone: (617) 495-2281  
 Assistant Coaches:  
 Molly Driscoll (Brown, '95)  
 Mike Cox (Merrimack, '93)  
 Letterwinners Returning/Lost: 18/5  
 Top Returning Players:  
 Tammy Shewchuk, Jr., F, 51g, 54a  
 Jennifer Botterill, So., F, 37g, 51a  
 Crystal Springer, Sr, G, 21-1-0, 1.61 GAA

## Northeastern University



**Dartmouth Invitational**  
**Thursday, Dec. 30**  
**at Hanover, NH**  
**—4 p.m. EST**

Location: Boston, MA  
 Founded: 1898  
 Enrollment: 12,500  
 Nickname: Huskies  
 Colors: Red and Black  
 Conference: ECAC  
 President: Dr. Richard Freeland  
 Athletic Director: Ian McCaw  
 Arena: Matthews Arena  
 Capacity: 6,000  
 Rink Size: 200' x 90'  
 Press Box Phone: (617) 373-5561  
 Hockey SID: Noah Smith  
 SID Office Phone: (617) 373-2691  
 SID Home Phone: (617) 782-5268  
 SID Fax Phone: (617) 373-3152  
 SID Email: nosmith@lynx.dac.neu.edu  
 Website: www.GoNU.com  
 SID Mailing Address:  
 Northeastern University  
 360 Huntington Avenue  
 Boston, MA 02115  
 1998-99 Record: 25-7-3  
 Conference Record/Finish: 18-4-4/4th  
 Head Coach: Heather Linstad  
 Alma Mater (Year): Providence (1989)  
 Overall Record: 139-63-24 (7 years)  
 Record at School: 139-63-24 (7 years)  
 Hockey Office Phone: (617) 373-2631  
 Assistant Coaches: TBA  
 Letterwinners Returning/Lost: 18/6  
 Top Returning Players:  
 Hilary Witt, Sr., F, 27g, 24a  
 Brooke Whitney, So., F, 15g, 26a



## Princeton University



### Princeton Thanksgiving Tournament Saturday, Nov. 27 at Princeton, NJ —5 p.m. EST

Location: Princeton, NJ  
 Founded: 1746  
 Enrollment: 4,600  
 Nickname: Tigers  
 Colors: Orange and Black  
 Conference: ECAC, Ivy League  
 President: Harold T. Shapiro  
 Athletic Director: Gary D. Walters  
 Arena: Hobey Baker Rink  
 Capacity: 2,092  
 Rink Size: 200' x 80'  
 Press Box Phone: (609) 258-1812  
 Hockey SID: Matt Ciciarelli  
 SID Office Phone: (609) 258-5701  
 SID Fax Phone: (609) 258-3545  
 SID Email: mtcic@princeton.edu  
 Website: www.princeton.edu/Athletics/  
 SID Mailing Address:  
 P.O. Box 71  
 Jadwin Gym  
 Princeton, NJ 08544-0071  
 1998-99 Record: 15-14-1  
 Conference Record/Finish: 14-11-1/7th  
 Head Coach: Jeff Kampersal  
 Alma Mater (Year): Princeton (1992)  
 Overall Record: 40-46-3 (3 years)  
 Record at School: 40-46-3 (3 years)  
 Hockey Office Phone: (609) 258-5975  
 Assistant Coaches: Amy Carlson  
 Letterwinners Returning/Lost: 20/4  
 Top Returning Players:  
 Andrea Kilbourne, So, F, 18g, 26a  
 Annamarie Holmes, Jr., D, 10g, 18a  
 Susan Maes, So., G, 3.05 GAA, .889 save %

## Wayne State University



### Saturday, Oct. 23 at Detroit, MI —2 p.m. EST

Location: Detroit, MI  
 Founded: 1868  
 Enrollment: 30,729  
 Nickname: Tartars  
 Colors: Green and Gold  
 Conference: Independent  
 President: Dr. Irvin D. Reid  
 Athletic Director: Bob Brennan  
 Arena: Michigan State Fairground  
 Capacity: 5,500  
 Rink Size: 200' x 85'  
 Press Box Phone: N/A  
 Hockey SID: Lisa McCoy  
 SID Office Phone: (313) 577-5997  
 SID Home Phone: (313) 388-4916  
 SID Fax Phone: (313) 577-5997  
 SID Email: lisa.mccoy@wayne.edu  
 Website: www.wayne.edu  
 SID Mailing Address:  
 101 Manthaei  
 5101 John C. Lodge  
 Detroit, MI 49202  
 1998-99 Record: First year  
 Conference Record/Finish: N/A  
 Head Coach: Tom O'Malley  
 Alma Mater (Year): Boston College (1989)  
 Overall Record: 51-90-7 (5 years)  
 Record at School: First year  
 Hockey Office Phone: (313) 577-4280  
 Assistant Coaches:  
 Joy Jackson (Windsor, 1995)  
 Heather Davidson (Cornell, 1998)  
 Letterwinners Returning/Lost: N/A  
 Top Returning Players: N/A

## Yale University



### Princeton Thanksgiving Tournament Sunday, Nov. 28 at Princeton, NJ —11 a.m. EST

Location: New Haven, CT  
 Founded: 1701  
 Enrollment: 5,200  
 Nickname: Elis, Bulldogs  
 Colors: Yale Blue and White  
 Conference: Ivy League, ECAC  
 President: Richard C. Levin  
 Athletic Director: Tom Beckett  
 Arena: Ingalls Rink  
 Capacity: 3,486  
 Rink Size: 200' x 85'  
 Press Box Phone: (203) 432-0778  
 Hockey SID: Steve Conn  
 SID Office Phone: (203) 432-1456  
 SID Fax Phone: (203) 432-1454  
 SID Email: steven.conn@yale.edu  
 Website: www.yale.edu/athletic  
 SID Mailing Address:  
 Sports Publicity Office  
 Box 208216  
 New Haven, CT 06520-8216  
 1998-99 Record: ECAC 5-21-3/13th  
 Conference Record/Finish: 2-21-3  
 Head Coach: John Marchetti  
 Alma Mater (Year): Providence (1971)  
 Overall Record: 274-109-20  
 Record at School: 12-40-5 (2 years)  
 Hockey Office Phone: (203) 432-4785  
 Assistant Coaches:  
 Heather Norton (New Hampshire, 1997)  
 Letterwinners Returning/Lost: 15/1  
 Top Returning Players:  
 Lisa Meyers, Jr., F, 19g, 14a  
 Jane Resor, Jr. F, 11g, 12a  
 Katie Hirte, So., G, 4.61 GAA, .855 save %

## Facilities



The Dane County Coliseum will be the home for the Wisconsin women's hockey team during its first season of competitive play in 1999-2000.

The Coliseum is known as one of college hockey's finest facilities by fans, coaches, and players alike. The Coliseum is furnished with theater-style seating for more than 8,000.

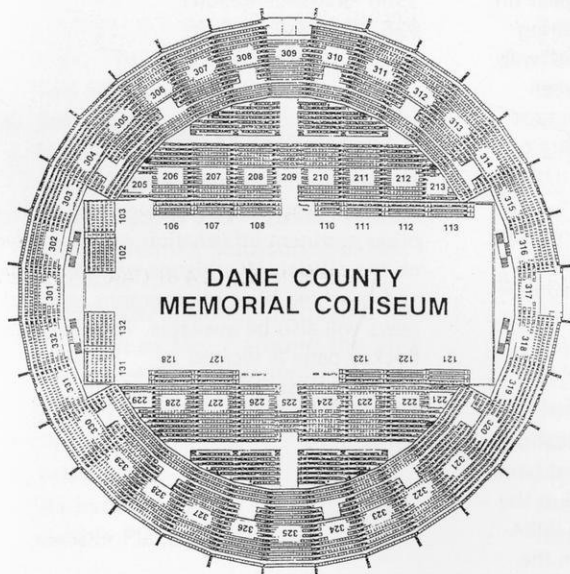
With the addition of the Kohl Center, Wisconsin now boasts the first and fourth largest collegiate ice facilities in the country. The Kohl Center tops all other collegiate facilities, seating over 14,000 a game, while the Coliseum ranks fourth in spectator capacity. The Coliseum, recently reduced from an Olympic sized rink, now is at NHL dimensions (200' by 85'). Eight luxury suites are located in the south end of the rink. These suites, with room for 12, feature buffet bars, private restrooms, dimmable lights, TV monitors, and private entrances.

The Kohl Center will play host to three Badger home games the first season, including the inaugural weekend series with Minnesota-Duluth and a contest versus Brown on Nov. 7. The building is named after U.S. Sen. Herb Kohl, a 1956 UW-Madison graduate who donated \$25 million to the project. Kohl's gift is the single largest private donation in University history.

Wisconsin will play its home game against Harvard on Nov. 5 at the new Capital Ice Arena in Middleton, Wis. The UW will also host Bemidji State for a home series in Eau Claire, Wis. The games will take place at Hobbs Ice Arena on Nov. 13 and 14.

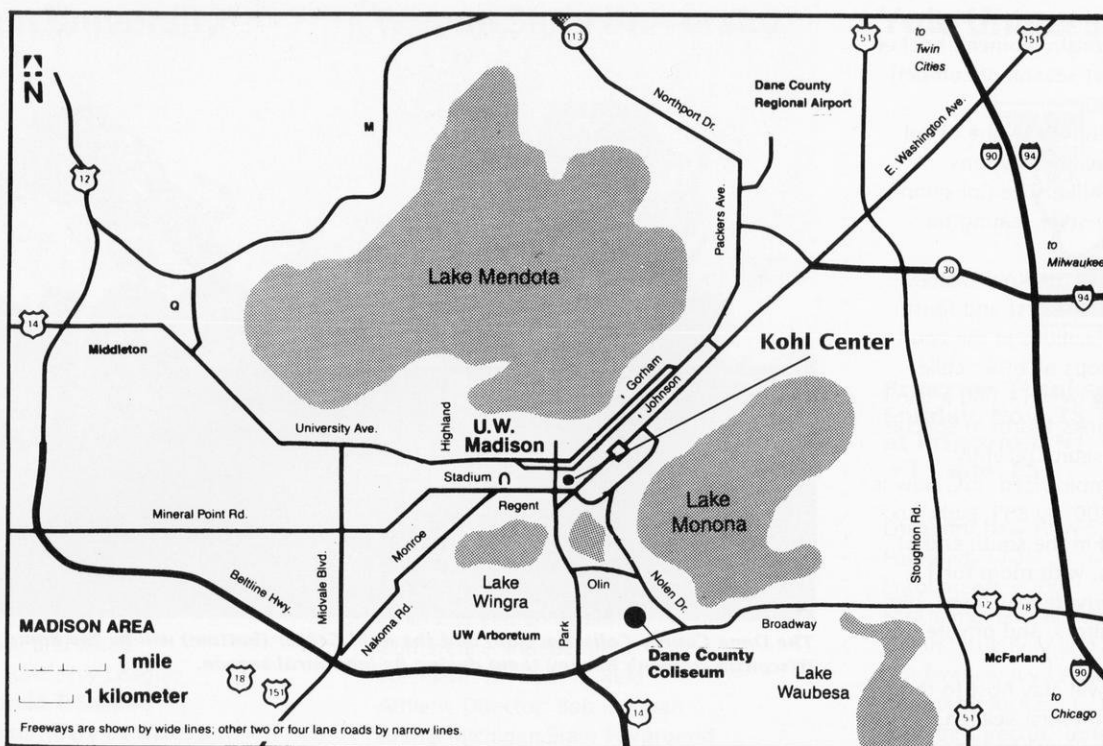


*The Dane County Coliseum (top) and the Kohl Center (bottom) will be the home of the Wisconsin women's hockey team during its inaugural season.*





# Media Information



## Media Credentials

Requests for credentials should be made in writing and in advance by contacting Paul Capobianco at the Women's Sports Information Office, (608) 263-1983. If faxing your request, the fax number is (608) 265-8051. Credentials will be mailed when possible. Credentials can also be picked up at the Women's Sports Information Office, Room 4040 in Camp Randall Stadium, or will be left at the various rinks. Call to find out where credentials will be left at each arena.

## Practice and Interviews

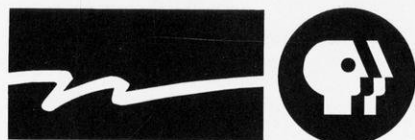
Wisconsin women's hockey practice is open to the media and the public. Interviews are generally conducted after practice. Please contact Paul Capobianco to arrange for player and coach interviews. The Badgers practice at the Kohl Center, Dane County Coliseum and Dane County Arena so please call ahead for site and time.

## Post-Event Interviews

All post-event interviews will be conducted approximately 10 minutes after completion of each game. At the Kohl Center, interviews will occur in the media interview room located adjacent to the Kohl Center main court. At all other arenas, arrangements will

be announced on game-day. All requests for interviews should be directed to sports information personnel prior to completion of the event.

## Television Broadcasts



**WISCONSIN PUBLIC TELEVISION**

Badger women's ice hockey will appear on Wisconsin Public Television twice during the inaugural season. On Oct. 8, WPT will broadcast the inaugural game between Wisconsin and Minnesota-Duluth on tape delay. WPT will also show the Badgers contest against Minnesota on Nov. 20. That game will be on tape delay at 9 p.m. Rob Hudson of WMTV will call the action, while former UW Hockey Club member Turina Bakken will add color. More information can be found at: [www.wpt.org](http://www.wpt.org)

## Radio Broadcasts

WIBA Radio and Learfield Communications will broadcast the Badgers' inaugural game against Minnesota-Duluth on Oct. 8 at the Kohl Center. The contest will air on WIBA-AM 1310. Michael Bahr will perform the

play-by-play duties. Other games, yet to be determined, will also be aired.

## Fax-on-Demand

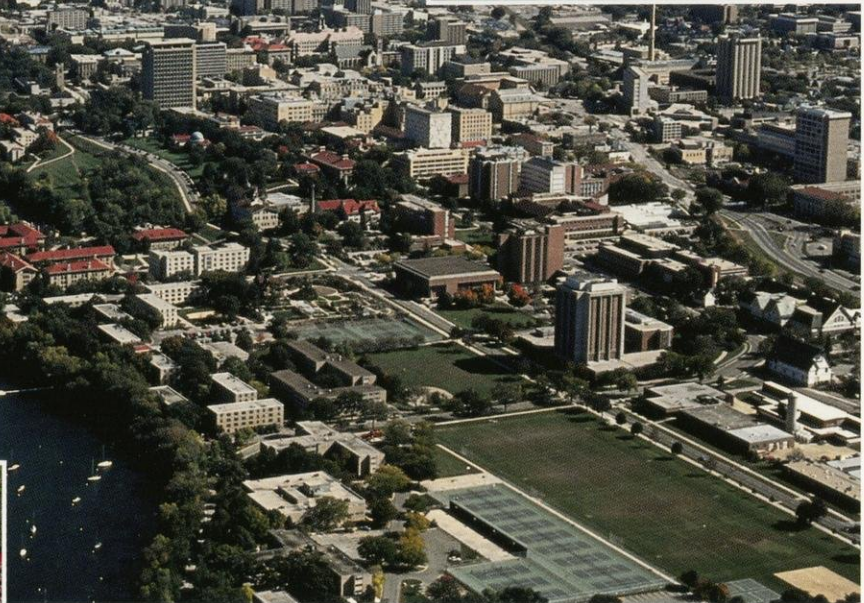
Call the Info Communication System at 800-300-2050 from the handset of your fax machine. You must have a pin number to access in the information. The Big Ten Conference passcode is 282 (BTC). Select the information you wish to retrieve, then push the start button of your fax machine. UW women's hockey cell numbers follow:

- 3365 Entire Release
- 3366 Statistics/Results
- 3367 Roster/Schedule
- 3368 Latest Game Report

## Wisconsin Website

The Wisconsin women's hockey news release, statistics, post-game story and other pertinent information will be posted on the official UW athletics website. Athlete and coaching bios, photographs, and daily news will also be available. The women's hockey page is located at [www.wisc.edu/ath/sport/whky/](http://www.wisc.edu/ath/sport/whky/)





## MADISON, WISCONSIN— On Everyone's Short List!

- ▶ **August 1999**—*Sports Illustrated* for Women rates the University of Wisconsin 10th in its Top 20 Colleges for Women Athletes rankings. The Badgers are the top Big Ten school listed.
- ▶ **July 1998**—*Money* magazine lists Madison as the No. 1 midsize city in the Midwest.
- ▶ **November 1997**—*Ladies Home Journal* names Madison the "No. 1 Best City for Women"
- ▶ **July 1997**—*Money* magazine lists Madison as No. 7 among the 300 biggest U.S. metropolitan areas in the Best Places to Live in America ranking.
- ▶ **June 1997**—*The Advocate* lists Madison as one of the 10 "Most Livable Places in America."
- ▶ **May 1997**—*Utne Reader* lists Madison as No. 5 among "America's 10 Most Enlightened Towns."
- ▶ **January 1997**—*American Health* magazine lists Madison as the No. 1 "Healthiest City for Women."
- ▶ **October 1996**—*Money* magazine lists Madison as No. 9 among "America's Safest Cities."
- ▶ **October 1996**—*Expansion Management* magazine lists Madison as No. 6 among the "Best Schools in the Nation."
- ▶ **July 1996**—*Money* magazine lists Madison as No. 1 among the 300 biggest U.S. metropolitan areas in the Best Places to Live in America ranking.
- ▶ **January 1996**—*Morgan Quinto Press* lists Madison as No. 3 among "Safest of nation's 100 Largest Cities."
- ▶ **August 1995**—*Good Housekeeping* magazine lists Madison as having one of the top five Farmer's Markets.
- ▶ **July 1995**—*USA Today* does a cover story in its "Life" section detailing the virtues of Madison.
- ▶ **July 1995**—*Outside* magazine ranks Madison as one of the top seven "Dream Towns."
- ▶ **July 1995**—*Swing* magazine ranks Madison first in its top 10 places to live for "generation X-ers" (20-somethings).



**1999-2000 WOMEN'S HOCKEY SCHEDULE**

DATE	OPPONENT	TIME
<b>INAUGURAL WEEKEND-KOHL CENTER</b>		
OCT. 8	MINNESOTA-DULUTH <i>Inaugural game</i>	7:05PM
OCT. 9	MINNESOTA-DULUTH	7:05PM
Oct. 15-16	at Ohio State	6pm/3pm
Oct. 22	at Findlay	6pm
Oct. 23	at Wayne State	1pm
Oct. 29-30	at St. Cloud State	7pm/3pm
NOV. 5	HARVARD (Capitol Ice Arena, Middleton, WI)	7:30PM
NOV. 7	BROWN (Kohl Center)	1:05 PM
NOV. 13-14	BEMIDJI STATE (at Eau Claire, WI)	3:05PM
NOV. 19-20	MINNESOTA	7:05PM
Nov. 27	at Princeton	4pm
Nov. 28	vs. Yale (at Princeton, NJ)	10am
DEC. 3-4	MSU-MANKATO	7:05PM
Dec. 29	at Dartmouth	11:30am
Dec. 30	vs. Northeastern (at Hanover, NH)	3pm
Dec. 31	vs. Concordia (at Hanover, NH)	11:30am
JAN. 8	US NATIONAL TEAM* (at Fond du Lac, WI)	TBA
Jan. 14-15	at Minnesota-Duluth	7:05pm
JAN. 22-23	OHIO STATE	1:05PM
Jan. 28-29	at Bemidji State	7:05pm
FEB. 5-6	ST. CLOUD STATE <i>Fan Appreciation Weekend</i>	1:05PM
Feb. 11-12	at MSU-Mankato	2:05pm
Feb. 26-27	at Minnesota	2:05pm
Mar. 3-5	WCHA Championship, Bloomington, MN	

\* exhibition game

Home games listed in CAPS are played at the Dane County Coliseum, unless noted.

Times are Central & subject to change.

For ticket information, call 1-800-GO-BADGERS.

Follow the Badgers on the web at [www.wisc.edu/ath/](http://www.wisc.edu/ath/)

All promotions subject to additions and/or change.