



LIBRARIES

UNIVERSITY OF WISCONSIN-MADISON

The Varsity Movie Review of "Not responsible". May 5, 1921

Madison, Wisconsin: The Edwin Booth Dramatic Club, May 5, 1921

<https://digital.library.wisc.edu/1711.dl/VVUVS3JF4D6538X>

Based on date of publication, this material is presumed to be in the public domain.

For information on re-use, see

<http://digital.library.wisc.edu/1711.dl/Copyright>

The libraries provide public access to a wide range of material, including online exhibits, digitized collections, archival finding aids, our catalog, online articles, and a growing range of materials in many media.

When possible, we provide rights information in catalog records, finding aids, and other metadata that accompanies collections or items. However, it is always the user's obligation to evaluate copyright and rights issues in light of their own use.

F9029
U58
1921

The Varsity Movie Review

OF

"NOT RESPONSIBLE"



Portrait by Bell Studio

Produced and Released by
The Edwin Booth Dramatic Club
University of Wisconsin

Price 25c

F9029
U58
1921

Eat at the
Varsity Cafe

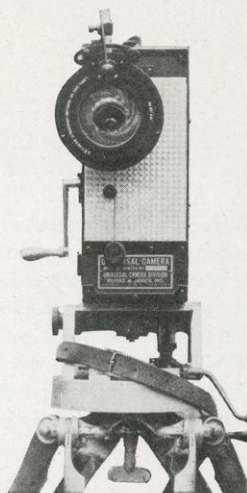
*The Place You'll See
in the Varsity Movie*

Where Quality Is First

Pleasant surroundings where the service is not
what the hero's mishap would lead you to be-
lieve.

831 University Avenue

B. 222



THE University Movie is an innovation in the realm of motion pictures, being a pioneer in the field of non-professional photo-plays. Without precedent in the college world, this enterprise, written, directed, enacted, and managed by students of the University of Wisconsin, stands as the only photo-drama ever initiated by an undergraduate body.



THE VARSITY MOVIE REVIEW

Published at Madison, Wisconsin. May 5, 1921. \$.25 a copy.

Editor.....	G. Fred Brewer
Advertising.....	Henry J. Coerper, Jr., Margaret Daly
Sales Manager.....	Wayne L. Morse

The purpose of this booklet is to present to those interested in the Varsity Movie, either as spectators or as helpers, interesting information of the production, and an insight into the making of the World's First Student Photo-Drama. It also to serves as an expression of appreciation to all the members of the cast and staff whose cooperation and earnest effort alone has made possible the success of this unprecedented undertaking, which we hope will be a source of entertainment to its audiences and of permanent benefit to the good will of the University of Wisconsin.

HISTORY OF THE PRODUCTION.

By WILLETT KEMPTON, Director

The idea of producing a student photo-drama, unique and unprecedented in its character, originated within the Edwin Booth Dramatic Club almost a year ago. The plans lay dormant during the summer but crystalized into reality when school opened in the autumn. The director and business manager appointed at that time were put in complete charge of the production.

Following an all-university contest, a scenario written by "Al" Hartlett was chosen as a working basis. This has undergone a number of changes until "Not Responsible" evolved to its present form.

The cast was picked during January and February. In this preparatory period, both the business and production staffs were considerably changed until they came to be composed of their present personnel.

Active work in filming the production was started in the latter part of February, and before the ice went out a number of excellent ice-boat scenes were secured. March and April saw the entire cast and staff working day and night. Scenes were "shot" at all hours and in sundry places. In spite of the fact that the production was more or less experimental and all the services purely voluntary, the numerous difficulties surrounding the production of the film were successfully overcome. Work on the production end was finished April 20 and the cast honorably discharged to private life. The business staff, however, is still keeping up the good work.

The producers of this photo-drama have established a precedent which will long stand in college circles. They have done a piece of work worthy of the great University of Wisconsin; a film student made and student played, yet professional in its quality. Its success speaks better than words for the tireless effort and real talent that has been unselfishly devoted to the end that the Varsity Movie might be a worthy production. As "Not Responsible" is released thruout the country it will not only bring credit upon its immediate producers, but will also be an effective advertisement for the University; and, affording a realistic insight into the life of a typical undergraduate student body, it will thus accomplish its mission.

SYNOPSIS OF "NOT RESPONSIBLE".

BY HORACE GREGORY

"Not Responsible" is the story of an education at the University of Wisconsin. Our hero, Jack Ellison, after having become entangled in the wiles of a Wily Vampire and having wasted several years at eastern schools, is forced to go west by his father, and there work his way thru college.

It is as a waiter in a restaurant that Jack starts the action of the play—he pours cereal and cream all over a fair co-ed, Betty, who happens to be wearing a new fur coat. The coat is ruined and the plot begins to get thick.

Our Heroine, Rosa Bell Lane, meets her future man in this restaurant scene. She is shy and reticent; a dear, simple little country girl who is faithful and true to all movie traditions. She walks into the University life totally unconscious of the coming disasters, but is luckily befriended by Betty.

Jack takes the fur coat to the cleaners. Two amateur detectives, Abie and Izzy, suspect that our Hero has a clutching hand in several fur coat robberies, and so undertake to apply the theories of Sherlock Holmes. Then, which makes matters far worse, the inevitable villain enters, and the fur coat of Betty's disappears.

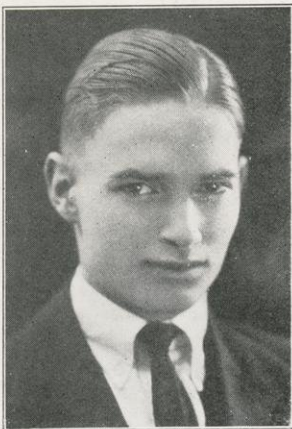
But Jack remains brave and cheerful. He disports himself merrily with football games, while the villain follows closely on his trail.

In the meantime Jack and Rosa Bell have met and romance is started.

In order to win the prize and provide a new fur coat for Betty, Jack enters a boat in the annual ice-races; but, due to his black-hearted rival, he is unable to take an active part in them. Jack not appearing at the race, Rosa Bell skips into his skiff and sails a wonderful race to victory.

The Villian besmirches the fair name of our Hero in vain. The detectives do some real detecting, Mr. Ellison, Sr., helps matters along, and all turns out beautifully,—for of course we must have a snappy ending to our melodramatic comedy. And if there is any moral to be found in it, we are Not Responsible.





Kempton



Stolte

STAFF

PRODUCTION DEPARTMENT.

Willett Kempton	Director
Robert Holcombe	Assistant Director
Ralph Scheinpfug	Cast Director
James Brader	Cast Director
Herbert Boning	Production Manager
John Bigler	Assistant Production Manager
Elvin Hartlett	Story
Madeline Johnson	Secretary
Adrian Dornbush	Art Director
Howard Stark	Property Manager

MEMBERS

Horace Gregory	Scenario Titles
Elizabeth Marshall	Continuity
Eleanore Riley	Pageants
Gladys Frazer	Costumes
Helen Hooper	Supernumeraries
Dorothy Schmolze	Make Up

BUSINESS DEPARTMENT

Herbert Stolte	Business Manager
Fred Brewer	Advertising Manager
Marion Strassburger	Publicity Director
Fred Trewbridge	Film Manager

ASSISTANTS IN PRODUCTION

Art Department	Diedre Cox, Dorothy Richie
Properties	Washburn Lyons, Thomas Wood
Movie Mixer	Thomas Tredwell
Technical Director	Cyril Ballam
Electricians	George Flatman, Merrill Goddard



Kimberly

Harding

Warren

Johnson

THE CAST

Rosa Bell Lane.....	Georg 'Ann Kimberly
Jack Ellison.....	Jack Harding
Mr. John Ellison, Sr.....	Prof. Eugene H. Byrne
Bud Babcock.....	John Warren
Horace.....	Horace Wetmore
Marjorie Manners.....	Marjorie Boesch
Abie.....	Carlton Douglas
Izzy	George Bartlett
Tom Lane.....	William Kellet
Prof. Fish.....	Prof. Carl Russel Fish



Bartlett

Douglas

Boesch

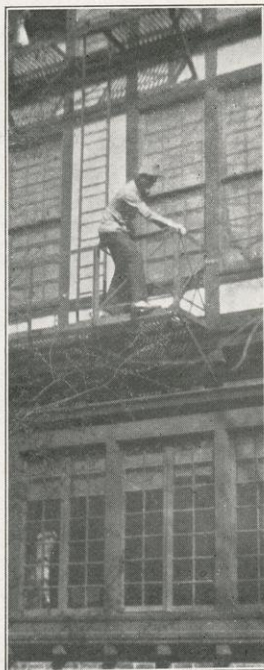
Wetmore

Fish

Photographs by DeLonge



The Cameraman



By Bell Studio
Izzy at Work



Venice on the Lower Campus



By Bell Studio
The Heroine



Director Kempton



The Egyptian Scene

By Bell Studio

BIOGRAPHICAL GLIMPSSES

GEORG 'ANN KIMBERLY

Our heroine, if she will allow us to call her such, is just as winsome and attractive in real life as in the studio. In the phraseology of Mae Tinee we can describe her as small in stature with dark hair and sparkling brown eyes, an altogether fairy-like and very attractive personality. Georg 'Ann has probably realized that there is more work than play in being a movie star. She was born in Chicago in 1900, the exact date we will not disclose. A talented dancer, somewhat of a singer, and by instinct dramatic, she has carried her part well. She is a sophomore in the university, a member of Kappa Kappa Gamma and Mystic Circle. During the war she acted as an emergency driver. We can forecast a bright future for our bashful Rosa Bell Lane.

WILLETT MAIN KEMPTON

All ready? Action! Camera! And Willett squats there, megaphone in hand, giving all the essential directions to the embryo stars. Of course he is not a David Griffith as yet, but as an amateur director his work has been both far-sighted and talented. He was born at Mt. Carol, Illinois in the year 1900, and now resides in Madison, being a sophomore in the university. He took his preparatory work at Culver Military Academy. Willett is a member of Edwin Booth, Skyrocket Editor of the Cardinal in the summer of 1919, Staff 1922 Badger, and took first prize for side-show in the Circus last year. Really he is not at all hard to get along with and his work has earned him the appreciation of all who have been connected with the production, for it is due more to his efforts than to any one other single person that the World's First Student Photo-Drama has been made a reality.

ADRIAN JAMES DORNBUSH

Introducing our Art Director, Adrian was born in the Province of Gronigen Holland and migrated to this country in 1909. He is a sophomore in the university, a member of Chi Phi, Edwin Booth, and Pi Epsilon Delta. He has designed costumes, supervised stage-settings and lighting effects for a number of Edwin Booth productions, and is quite skilled in his field. As Art Director he has had the hard work of changing the campus into Egypt, Venice, Greece, etc. at the whim of the director, and his accomplishments were nothing less than supernatural. Ade is a genuine artist but claims to have none of their eccentricities. In fact, he is an altogether capable and conventional young man without whose services we would have been greatly handicapped.

MADELINE JOHNSON

Madeline has the distinction of being on both cast and staff, playing the part of Betty in the film and acting also as secretary to the production department.

She is quite a charming young lady and doesn't mind in the least having our hero spill crumbs all over her fur coat. Madeline is a resident of Lone Rock, Wisconsin; is a sophomore in the university, and a member of Delta Gamma and Mystic Circle.

JACK HARDING

Yes Jack is his real name as well as his reel name, but we should really pronounce it 'Arding, for he was born in Manchester, England, 1898, coming to America when he was six years old. Now he is a regular Hoosier from Indianapolis. He came to us this year as a graduate student from Wabash College, where he took a leading part in dramatic activities. He has played in "The Fortune Hunter," "The Pigeon," "The Glittering Gate," and "Justice," and is really quite versatile in his acting. He is a member of Phi Delta Theta, the Curtain Club and Edwin Booth. Jack claims to be a very prosaic sort of an individual, and nothing of the Appolo that our publicity director would hold him to be. But we must disclose that, nevertheless, he is very handsome, dark and of athletic build, an extremely interesting and capable young man.

HERBERT A. STOLTE

To say that Herb has made and is making a capable Business Manager is not doing him justice. In fact it is only due to his tireless effort and keen business judgment that "Not Responsible" is able to be a financial as well as a dramatic success. The financing and management of a five thousand dollar investment is no small job and no small man is filling that job, either. Herb came to us from Reedsburg, Wisconsin, some four years ago. He has been quite active while in school, having been chairman of the Ways and Means committee 1921 Prom; University Band 1, 2; chairman of inter-fraternity athletics; and is a member of Alpha Delta Phi, Skull and Crescent, Ku Klux Klan, and Edwin Booth. The work of the business department under Herb's supervision and guidance will continue during the summer and probably thru the biggest part of next year.

MARJORIE BOESCH

As a vampire, Marjorie, whose last name on the screen is Manners, is quite a revelation. But really she is not as scheming as you might suppose, and not so much of a villainess. She is a junior in the university, and spent her freshman year at Knox College. Her college activities include Dolphin Club, Twelfth Night, hockey squad, swimming honors, W. A. A., a member of Kappa Alpha Theta, and was Prom Queen 1922 Prom. Marj was a great help in picking the male parts for the production. If Burlington, Iowa, has a few more like Marj they will be very welcome at the university.

HORACE VICTOR GREGORY

Gregory is responsible for the clever titles for the film and has done much work in revising the scenario to its present form. In fact, he is our literary light. Horace is an established resident of Milwaukee and is now a sophomore in the university. He is a member of the editorial staff of the Literary Magazine and co-author of this year's Haresfoot Play.

JOHN HYLAND WARREN

The bloody villain, Bud Babcock, otherwise John, is not so bad outside of the cinema world, but you will agree that as a villain he is a heavy success. He was born in Tomah, Wisconsin, 1897, and is now a senior in school. While in the university he has taken an active part in dramatics, in Edwin Booth productions, Union Vodvil '19, Senior Play '19, etc. John served some 16 months overseas and while in France attended the University of Bordeaux. He is a member of Delta Upsilon, Edwin Booth, and is president of the Glee Club. Even falling thru the ice did not dampen his ardor for the movie. And that mustache is the real thing, gentle reader, and the pride of his life.

GEORGE W. BARTLETT, JR.

Enter Izzy, the amateur detective, but who off the screen is George Bartlett. Having deserted the legitimate stage for the time being, he lent us his powers of deduction in unravelling the mystery of the fur coat and incidentally putting a good many kicks into the plot. George was born in Dunkirk, N. Y. but is now a true Badger. He is a sophomore in the university, a member of Delta Tau Delta, on the Octopus Staff, and was in the Haresfoot production. He has had much experience in amateur dramatics having played in "Green Stockings," "Pinafore," "Chimes of Normandy," etc.

CYRIL JACK BALLAM

Ballam is the second Englishman connected with our production, he being officially Technical Director. He was born in Liverpool, July 27, 1897, where he lived until he was fifteen, and then lived three years in Canada before coming to the United States. Cyril is quite versatile, being on the Badger Staff, business staffs of the Literary Magazine and Octopus and a member of Hesperia. Before coming to the university he worked with the Westinghouse Film Booking

Company and his practical knowledge has been very valuable to us. He is also a member of the New York Film Players' Club.

ROBERT LINDON HOLCOMBE

Bob has been one of the most faithful workers in The Varsity Movie, having done everything from sweeping out the office to directing or scene building. His work began early in the fall and was both efficient and far-reaching. Most notable have been his investigations in make-up. Bob is a resident of Madison and a junior in the university. While in school he has taken an active part in dramatics both in acting and on the producing end. Some of his activities include Property Manager and in the cast of Senior play '19, Stage Manager Junior play '20, Property Manager Junior play '19, Union Vodvil '19, Circus '20, Junior Council of Y. M. C. A. Bob is also something of a gymnast having been on the Freshman gym team and two years on the Varsity gym team. He is a four year member of Edwin Booth, belongs to Phi Beta Pi, Gamma Sigma, and the International Club.

HERBERT E. BONING, JR.

If you have any troubles take them to Herb, our Production Manager, for he is thoroughly trained in reducing trouble to the minimum. He was born in Cincinnati in 1901 and lived there for a number of years. Now he is a resident of Milwaukee. Herb is a sophomore in the Commerce course, is a member of Sigma Chi, Skull and Crescent, Commerce Club, Edwin Booth, and was on the Varsity football squad this year. We must disclose his two pets—his pipe and his embryo mustache, without either of which he would not know him.

CARLTON EGBERT DOUGLAS

"Oi Abie, ver at you been?" But Abie says he wants to sleep and besides, his nurse is very good-looking. Carlton has put a lot of pep into his comedy role of an amateur detective along with Izzy. Douglas is a resident of Milwaukee, but first saw the light of day in New York City. He is a sophomore in the university and Assistant Skyrocket Editor of the Daily Cardinal. His one regret is that he is too small for athletics and therefore had to get in the Varsity Movie. He is quite an expert at golf, his hobby, and was in the semi-finals last year for the Wisconsin State Golf Championship.

Master
Developing & Printing

Exquisite
Stationery & Die Stamping

The K K Shop

The Kamera Kraft Shop

STATE AT FRANCES STREET

Unexcelled
Picture Framing

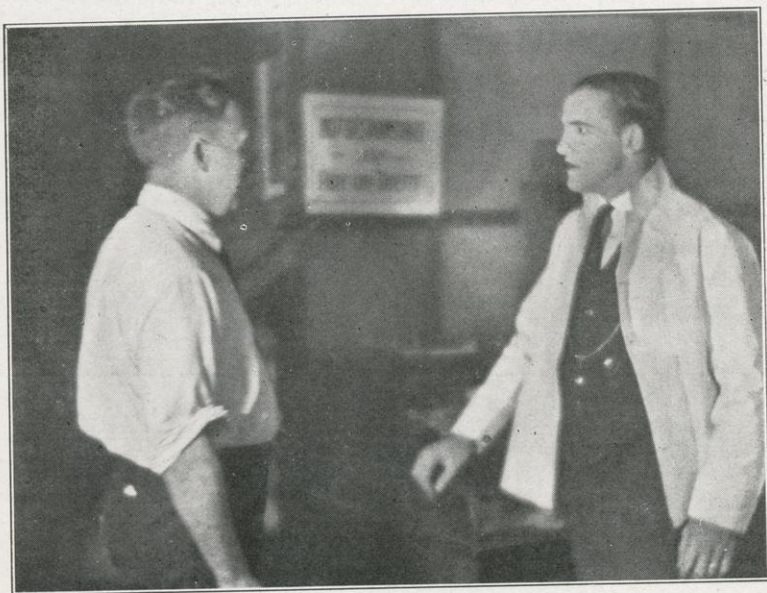
Gifts
Unordinary

*By Bell Studio*

The Charms of Egypt



Rosa Bell and Tom

*By Bell Studio*

He's Not Responsible



Hard at Work



By Bell Studio

The Detectives



Working on Ice

Before and after the Movies
have your clothes pressed

FRANK OWENS

312 State Street

ACKNOWLEDGEMENTS

DeLonge Studio

George C. Bell & Company

The Photoart House

Goff Studio

Morgan Brothers

Democrat Printing Company

University of Wisconsin

Arrow Film Corporation

Universal Film Manufacturing Com-
pany

Metro Pictures Corporation

Fuller Opera House

Grand Theatre Company

Strand Theatre

The willing aid and cooperation of these companies has been of inestimable value to the production of the Varsity Movie.

Discount Your Cleaning

**\$5.00 in Advance
Gives \$6.00 Credit**

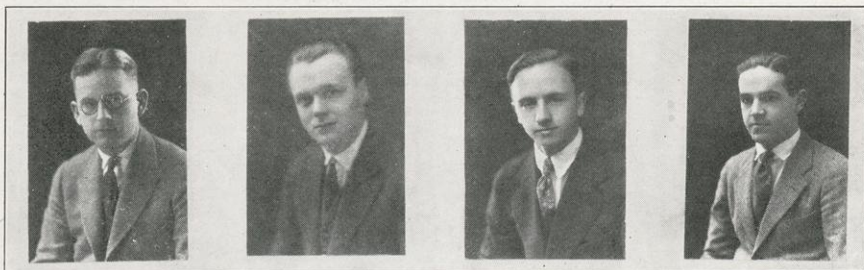
Ten Per Cent Discount on Cash Call Orders

PANTORIUM CO.

538 State Street

Members N. A. D. C.

Phones 1180—1598



Boning

Dornbush

Holcombe

Brewer



Riley

Gregory

Scheinflug

Stark

Frazer

Photographs by DeLonge

The U. W. Pictorial History

The movie of Wisconsin Life from 1884 to
1921. Your organization is represented
in its six volumes.

The Photoart House

Wm. J. Meuer, Pres.

AFTER THE SHOW

MORGAN'S

FOR A MALTED MILK

532-534 State

CORONA

THE PERSONAL WRITING MACHINE

This 6½ pound typewriter gives wonderful results and should be used by every faculty man, student, traveling man, and should be in every home. Be as particular about your personal letters as you would be about business letters.

\$50.00 with Case

University Co-Operative Company

E. S. Grady, Mgr.

506-508 State St.

Madison, Wis.

As long as a man looks on his printing as overhead, he will order the cheapest. When he realizes that it is sales and advertising literature, he will buy the best.

We conscientiously try to give the BEST at lowest price and in shortest time.

Democrat Printing Company

F. S. Brandenburg, '09

Calla A. Andrus, '10

"Smiley" Bassett, '14

BADGER 486-487

The University Pharmacy

DRUGS, SODA

TOILET ARTICLES

TENNIS SUPPLIES

Meet Your Friends Here

Corner State and Lake

Branch Bank of Wisconsin

State and Gilman Sts.

Capital and Surplus, \$360,000

All General Banking Transacted

FOREIGN EXCHANGE

TRAVELERS' CHEQUES

SAFETY DEPOSIT BOXES

Who are better able to judge good food than college men or women?

Unfortunately, they are often subjected to anything but palatable dishes.

So the BLUE LANTERN has very successfully attempted to serve the most carefully prepared, satisfying foods in fascinating surroundings.

Appetizing food is within easy reach of all—you have but to step into the BLUE LANTERN to secure it.

The Blue Lantern

428 STATE STREET

